

# Pasternack

## 天线

有源、  
无源和  
互连产品



当天发货

7天/  
24小时  
客户支持

最全的射频、  
微波种类



应用工程师  
随时待命

在线  
购买



扫描二维码，关注  
PASTERNAK微信公众号

免费热线: 400 928 5100 | 垂询邮箱: sales@pasternack.cn  
在线下单: Pasternack.cn

**PE PASTERNAK**  
an INFINITE® brand

# 覆盖所有应用领域的放大器产品

<p><b>定向天线:</b></p> <ul style="list-style-type: none"><li>• 面板状定向天线 p 2</li><li>• 固定式定向天线 p 2</li><li>• 八木天线 p 2</li></ul>	
	<p><b>全向天线:</b></p> <ul style="list-style-type: none"><li>• 圆顶天线 p 3</li><li>• 固定式全向天线 p 3</li><li>• 有源-无源GPS全向天线 p 4</li><li>• 移动式全向天线 p 5</li><li>• 便携式全向天线 p 5</li></ul>
<p><b>波导增益喇叭:</b></p> <ul style="list-style-type: none"><li>• 锥形 p 8</li><li>• 透镜 p 10</li><li>• 全向 p 10</li><li>• 标准 p 11</li><li>• 广角波纹 p 14</li><li>• 带波导同轴转换头的增益喇叭 p 15</li></ul>	
	<p><b>波导同轴转换器</b></p> <p>p 18</p>

美国Pasternack公司的天线选型库不但规模庞大，而且品种繁多，可满足40 MHz~200GHz频率范围内各种应用的需求。

其中，波导天线产品线品种丰富，一应俱全——带波导法兰的标准增益喇叭天线、锥形喇叭天线、波纹喇叭天线、透镜喇叭天线以及全向天线。这些天线既可直接安装在波导器件上，也可在需要同轴电缆连接时与各种波导同轴转换头组合。相关应用包括研发、制造、测试测量以及国防/航空航天。

上述产品还包括针对无线应用的室内、户外、车载、便携式无线电天线。这些无线电天线分为全向和定向两种，并且具有多种不同的增益和波束宽度可供选择。相关应用包括陆地移动无线电、公共安全、RFID、GPS、WLAN、LPWAN/IoT以及蜂窝。其中，每种天线都随附必要的安装零件。户外天线可防水，并且可在极宽的温度范围内操作。此外，带天线罩的产品采用抗紫外线塑料制成。

通过[www.pasternack.cn](http://www.pasternack.cn)，可在线查看上述所有天线，及其详细产品数据表、CAD图、以及实时定价和库存。此外，我们的应用工程师随时待命，以回答您的任何技术问题，并协助您正确选出适合您具体应用的产品。

# 定向天线

## 面板状定向天线

所有产品均备货在库且可当天发货



PE P/N	RF Frequency Range (MHz)	VSWR	Gain Nominal	Polarization
<a href="#">PE51054</a>	800 - 2170	1.4:1	7 dBi	Vertical
<a href="#">PE51025</a>	902 - 928	1.2:1	8.5 dBi	LHCP
<a href="#">PE51024</a>	902 - 928	1.2:1	8.5 dBi	RHCP
<a href="#">PE51023</a>	902 - 928	1.8:1	9 dBi	Vertical
<a href="#">PE51019-2</a>	2300 - 2500	1.6:1	9 dBi	Vertical or Horizontal
<a href="#">PE51019-4</a>	2300 - 2500	1.6:1	9 dBi	Vertical or Horizontal
<a href="#">PE51049</a>	2400 - 2500	1.7:1	19 dBi	Vertical/Horizontal
<a href="#">PE51050</a>	5725 - 5850	1.5:1	19 dBi	Vertical/Horizontal
<a href="#">PE51052</a>	5725 - 5850	1.5:1	22 dBi	Vertical/Horizontal

# 固定式定向天线

所有产品均备货在库且可当天发货



PE P/N	RF Frequency Range (MHz)	VSWR	Gain Nominal	Polarization
<a href="#">PE51129</a>	4400 - 6400	1.5:1	9 dBi	Vertical

# 八木天线

所有产品均备货在库且可当天发货



PE P/N	RF Frequency Range (MHz)	VSWR	Gain Nominal	Polarization
<a href="#">PE51171</a>	890 - 960	2.1:1	11 dBi	Vertical or Horizontal

# 全向天线

## 圆顶天线

所有产品均备货在库且可当天发货



PE P/N	RF Frequency Range (MHz)	VSWR	Gain Nominal	Polarization
<a href="#">PE51158</a>	698 - 2700	1.7:1	5 dBi	Vertical
<a href="#">PE51168</a>	698 - 5900	1.8:1	6 dBi	Vertical
<a href="#">PE51098-1</a>	800 - 2500	1.4:1		Vertical
<a href="#">PE51098-2</a>	800 - 2500	1.4:1		Vertical
<a href="#">PE51098-3</a>	800 - 2500	1.4:1		Vertical
<a href="#">PE51098-4</a>	800 - 2500	1.4:1		Vertical
<a href="#">PE51058</a>	800 - 3000	2:1	8 dBi	Vertical
<a href="#">PE51057</a>	800 - 3000	2:1	3 dBi	Vertical
<a href="#">PE51059</a>	800 - 3000	2:1	3 dBi	Vertical
<a href="#">PE51096</a>	806 - 2500	1.5:1	3 dBi	Vertical

# 固定式全向天线

所有产品均备货在库且可当天发货



PE P/N	RF Frequency Range (MHz)	VSWR	Gain Nominal	Polarization
<a href="#">PE51028</a>	902 - 928	2:1	5 dBi	Vertical
<a href="#">PE51062</a>	2250 - 2350	1.43:1	3 dBi	Vertical
<a href="#">PE51063</a>	2350 - 2450	1.3:1	3 dBi	Vertical
<a href="#">PE51030</a>	2400 - 2483	1.5:1	10 dBi	Vertical
<a href="#">PE51061</a>	2400 - 2500	2:1	8 dBi	Vertical
<a href="#">PE51172</a>	2400 - 2500	2.1:1	8 dBi	Vertical
<a href="#">PE51064</a>	2450 - 2550	1.43:1	3 dBi	Vertical

## 固定式全向天线

所有产品均备货在库且可当天发货



续

PE P/N	RF Frequency Range (MHz)	VSWR	Gain Nominal	Polarization
<a href="#">PE51033</a>	3400 - 3600	1.5:1	9 dBi	Vertical
<a href="#">PE51034</a>	3400 - 3600	1.5:1	11 dBi	Vertical
<a href="#">PE51065</a>	3450 - 3550	1.4:1	3 dBi	Vertical
<a href="#">PE51036</a>	5470 - 5725	1.5:1	10 dBi	Vertical
<a href="#">PE51037</a>	5470 - 5725	1.5:1	12 dBi	Vertical
<a href="#">PE51040</a>	5725 - 5850	1.5:1	12 dBi	Vertical

## 有源GPS全向天线

所有产品均备货在库且可当天发货



PE P/N	RF Frequency Range (MHz)	VSWR	Gain Nominal	Polarization
<a href="#">PE51067</a>	1570 - 1580	1.3:1	32 dBiC	RHCP

## 无源GPS全向天线

所有产品均备货在库且可当天发货



PE P/N	RF Frequency Range (MHz)	VSWR	Gain Nominal	Polarization
<a href="#">PE51068</a>	1220 - 1580		6 dBiC	RHCP
<a href="#">PE51066-1</a>	1572.42 - 1578.42	1.5:1	3 dBi	RHCP
<a href="#">PE51066-2</a>	1572.42 - 1578.42	1.5:1	0 dBi	RHCP

## 移动式全向天线

所有产品均备货在库且可当天发货



PE P/N	RF Frequency Range (MHz)	VSWR	Gain Nominal	Polarization
<a href="#">PE51000</a>	40 - 47	1.5:1	0 dBi	Vertical
<a href="#">PE51001</a>	118 - 940		0 dBi	Vertical
<a href="#">PE51003</a>	132 - 512	2:1		Vertical
<a href="#">PE51170</a>	440 - 480	2:1	5 dBi	Vertical
<a href="#">PE51060</a>	474.5 - 479.5	1.5:1	5.5 dBi	Vertical
<a href="#">PE51013</a>	806 - 1900	2:1	3 dBi	Vertical
<a href="#">PE51014</a>	824 - 1990	1.5:1	2.2 dBi	Vertical
<a href="#">PE51009</a>	825 - 896	1.5:1	5 dBi	Vertical
<a href="#">PE51010</a>	870 - 950	1.5:1	5 dBi	Vertical
<a href="#">PE51113-1</a>	880 - 2170	2:1	3 dBi	Vertical
<a href="#">PE51113-2</a>	880 - 2170	2:1	3 dBi	Vertical
<a href="#">PE51113-3</a>	880 - 2170	2:1	3 dBi	Vertical
<a href="#">PE51113-4</a>	880 - 2170	2:1	3 dBi	Vertical
<a href="#">PE51027</a>	902 - 928	2:1	4 dBi	Vertical
<a href="#">PE51136</a>	2400 - 2500		3 dBi	Vertical

## 便携式全向天线

所有产品均备货在库且可当天发货



PE P/N	RF Frequency Range (MHz)	VSWR	Gain Nominal	Polarization
<a href="#">PE51146</a>	400 - 420	2:1	0 dBi	Vertical
<a href="#">PE51145</a>	400 - 420	2:1	0 dBi	Vertical

## 便携式全向天线

所有产品均备货在库且可当天发货



续

PE P/N	RF Frequency Range (MHz)	VSWR	Gain Nominal	Polarization
<a href="#">PE51159</a>	420 - 450	2:1	0 dBi	Vertical
<a href="#">PE51160</a>	420 - 450	2:1	0 dBi	Vertical
<a href="#">PE51148</a>	450 - 470	2:1	0 dBi	Vertical
<a href="#">PE51149</a>	450 - 470	2:1	0 dBi	Vertical
<a href="#">PE51161</a>	470 - 512	2:1	0 dBi	Vertical
<a href="#">PE51162</a>	470 - 512	2:1	0 dBi	Vertical
<a href="#">PE51147</a>	482 - 512	1.5:1	0 dBi	Vertical
<a href="#">PE51153</a>	698 - 780	2:1	0 dBi	Vertical
<a href="#">PE51157</a>	698 - 780	2:1	0 dBi	Vertical
<a href="#">PE51152</a>	698 - 870	2:1	2 dBi	Vertical
<a href="#">PE51150</a>	698 - 870	2.2:1	2 dBi	Vertical
<a href="#">PE51154</a>	698 - 870	2.3:1	2 dBi	Vertical
<a href="#">PE51151</a>	698 - 870	2.5:1	2 dBi	Vertical
<a href="#">PE51163</a>	760 - 870	2:1	0 dBi	Vertical
<a href="#">PE51166</a>	760 - 870	2:1	0 dBi	Vertical
<a href="#">PE51155</a>	806 - 880	2:1	0 dBi	Vertical
<a href="#">PE51156</a>	806 - 880	2:1	0 dBi	Vertical
<a href="#">PE51164</a>	880 - 960	2:1	0 dBi	Vertical
<a href="#">PE51165</a>	880 - 960	2:1	0 dBi	Vertical
<a href="#">PE51089-1</a>	890 - 1880	2:1	3 dBi	Vertical
<a href="#">PE51089-2</a>	890 - 1880	2:1	3 dBi	Vertical
<a href="#">PE51089-3</a>	890 - 1880	2:1	3 dBi	Vertical
<a href="#">PE51089-4</a>	890 - 1880	2:1	3 dBi	Vertical

# 便携式全向天线

所有产品均备货在库且可当天发货



续

PE P/N	RF Frequency Range (MHz)	VSWR	Gain Nominal	Polarization
<a href="#">PE51056</a>	900 - 960	1.5:1	0 dBi	Vertical
<a href="#">PE51055</a>	900 - 960	2.1:1	3 dBi	Vertical
<a href="#">PE51026</a>	902 - 928	2:1	3 dBi	Vertical
<a href="#">PE51119</a>	1700 - 1850	2:1	3.5 dBi	Vertical
<a href="#">PE51120</a>	1700 - 1850	2:1	3.5 dBi	Vertical
<a href="#">PE51117A</a>	1700 - 2500	2:1	2 dBi	Vertical
<a href="#">PE51173</a>	1700 - 2500	2:1	2 dBi	Vertical
<a href="#">PE51121</a>	1900 - 2500	2:1	3.5 dBi	Vertical
<a href="#">PE51122</a>	1900 - 2500	2:1	3.5 dBi	Vertical
<a href="#">PE51123</a>	2200 - 2500	2:1	6 dBi	Vertical
<a href="#">PE51124</a>	2200 - 2500	2:1	6 dBi	Vertical
<a href="#">PE51090</a>	2300 - 2700	2:1	6.5 dBi	Vertical
<a href="#">PE51018</a>	2400 - 2483.5	1.5:1	2 dBi	Vertical
<a href="#">PE51133</a>	2400 - 2500	1.43:1	3 dBi	Vertical
<a href="#">PE51076</a>	2400 - 2500	2:1	3 dBi	Vertical
<a href="#">PE51078</a>	2400 - 2500	2:1	5.5 dBi	Vertical
<a href="#">PE51077</a>	2400 - 2500	2:1	2.2 dBi	Vertical/Horizontal
<a href="#">PE51142</a>	2400 - 2500 / 5000 - 5900	2:1	3.5 / 6 dBi	Vertical
<a href="#">PE51143</a>	2400 - 2500 / 5000 - 5900	2:1	3.5 / 6 dBi	Vertical
<a href="#">PE51144</a>	2400 - 2500 / 5000 - 5900	2:1	3.5 / 6 dBi	Vertical
<a href="#">PE51087</a>	2400 - 5800	2:1	2.5 dBi	Vertical
<a href="#">PE51088</a>	2400 - 5800	2.5:1	2 dBi	Vertical
<a href="#">PE51080</a>	2400 - 5825	2:1	2 dBi	Vertical
<a href="#">PE51082</a>	2400 - 5825	2:1	2 dBi	Vertical

## 便携式全向天线

所有产品均备货在库且可当天发货



续

PE P/N	RF Frequency Range (MHz)	VSWR	Gain Nominal	Polarization
<a href="#">PE51083</a>	2400 - 5825	2:1	2 dBi	Vertical
<a href="#">PE51081</a>	2400 - 5825		0 dBi	Vertical
<a href="#">PE51072</a>	3300 - 3800	2:1	2 dBi	Vertical
<a href="#">PE51084</a>	3300 - 3800	2:1	2 dBi	Vertical
<a href="#">PE51085</a>	3400 - 3800	2:1	5 dBi	Vertical
<a href="#">PE51135A</a>	4400 - 5000	2:1	6 dBi	Vertical
<a href="#">PE51134</a>	4400 - 5000	2:1	6 dBi	Vertical
<a href="#">PE51070</a>	5100 - 5900	2:1	5 dBi	Vertical
<a href="#">PE51125A</a>	5250 - 5850	2:1	4 dBi	Vertical
<a href="#">PE51126</a>	5250 - 5850	2:1	3.8 dBi	Vertical
<a href="#">PE51127</a>	5250 - 5850	2:1	6 dBi	Vertical
<a href="#">PE51128</a>	5250 - 5850	2:1	6 dBi	Vertical

## 波导增益喇叭 锥形增益喇叭

所有产品均备货在库且可当天发货



PE P/N	Waveguide Type	RF Frequency Range (GHz)	Gain (dB)	Flange Type	ECCN
<a href="#">PEWAN1065</a>	WR-5	140 - 220	10	Round Cover	EAR99
<a href="#">PEWAN1066</a>	WR-5	140 - 220	15	Round Cover	EAR99
<a href="#">PEWAN1067</a>	WR-5	140 - 220	20	Round Cover	EAR99
<a href="#">PEWAN1068</a>	WR-5	140 - 220	25	Round Cover	EAR99
<a href="#">PEWAN1063</a>	WR-6	100 - 112	20	Round Cover	EAR99

# 锥形增益喇叭

所有产品均备货在库且可当天发货



续

PE P/N	Waveguide Type	RF Frequency Range (GHz)	Gain (dB)	Flange Type	ECCN
<a href="#">PEWAN1057</a>	WR-8	100 - 112	10	Round Cover	EAR99
<a href="#">PEWAN1058</a>	WR-8	100 - 112	15	Round Cover	EAR99
<a href="#">PEWAN1059</a>	WR-8	100 - 112	20	Round Cover	EAR99
<a href="#">PEWAN1053</a>	WR-10	77 - 87	10	Round Cover	EAR99
<a href="#">PEWAN1055</a>	WR-10	77 - 87	20	Round Cover	EAR99
<a href="#">PEWAN1056</a>	WR-10	77 - 87	25	Round Cover	EAR99
<a href="#">PEWAN1050</a>	WR-10	87 - 100	15	Round Cover	EAR99
<a href="#">PEWAN1051</a>	WR-10	87 - 100	20	Round Cover	EAR99
<a href="#">PEWAN1052</a>	WR-10	87 - 100	25	Round Cover	EAR99
<a href="#">PEWAN1041</a>	WR-12	68 - 77	10	Round Cover	EAR99
<a href="#">PEWAN1042</a>	WR-12	68 - 77	15	Round Cover	EAR99
<a href="#">PEWAN1043</a>	WR-12	68 - 77	20	Round Cover	EAR99
<a href="#">PEWAN1044</a>	WR-12	68 - 77	25	Round Cover	EAR99
<a href="#">PEWAN1045</a>	WR-12	77 - 87	10	Round Cover	EAR99
<a href="#">PEWAN1046</a>	WR-12	77 - 87	15	Round Cover	EAR99
<a href="#">PEWAN1047</a>	WR-12	77 - 87	20	Round Cover	EAR99
<a href="#">PEWAN1048</a>	WR-12	77 - 87	25	Round Cover	EAR99
<a href="#">PEWAN1037</a>	WR-15	58 - 68	10	Round Cover	EAR99
<a href="#">PEWAN1038</a>	WR-15	58 - 68	15	Round Cover	EAR99
<a href="#">PEWAN1039</a>	WR-15	58 - 68	20	Round Cover	EAR99
<a href="#">PEWAN1040</a>	WR-15	58 - 68	25	Round Cover	EAR99
<a href="#">PEWAN1033</a>	WR-19	50 - 58	10	Round Cover	EAR99
<a href="#">PEWAN1034</a>	WR-19	50 - 58	15	Round Cover	EAR99
<a href="#">PEWAN1035</a>	WR-19	50 - 58	20	Round Cover	EAR99
<a href="#">PEWAN1036</a>	WR-19	50 - 58	25	Round Cover	EAR99

## 透镜喇叭

所有产品均备货在库且可当天发货



PE P/N	Waveguide Type	RF Frequency Range (GHz)	Gain (dB)	Flange Type	ECCN
<a href="#">PEWAN1083</a>	WR-10	89 - 99	34	Round Cover	EAR99
<a href="#">PEWAN1085</a>	WR-10	89 - 99	34	Round Cover	EAR99
<a href="#">PEWAN1084</a>	WR-10	89 - 99	40	Round Cover	EAR99
<a href="#">PEWAN1086</a>	WR-10	89 - 99	40	Round Cover	EAR99
<a href="#">PEWAN1079</a>	WR-12	72 - 82	32	Round Cover	EAR99
<a href="#">PEWAN1081</a>	WR-12	72 - 82	32	Round Cover	EAR99
<a href="#">PEWAN1080</a>	WR-12	72 - 82	37	Round Cover	EAR99
<a href="#">PEWAN1082</a>	WR-12	72 - 82	37	Round Cover	EAR99
<a href="#">PEWAN1076</a>	WR-15	55 - 65	37	Round Cover	EAR99
<a href="#">PEWAN1078</a>	WR-15	55 - 65	37	Round Cover	EAR99

## 全向

所有产品均备货在库且可当天发货



PE P/N	Waveguide Type	RF Frequency Range (GHz)	Gain (dB)	Flange Type	ECCN
<a href="#">PEWAN1089</a>	WR-10	89 - 99	2	Round Cover	EAR99
<a href="#">PEWAN1088</a>	WR-12	75 - 79	2	Round Cover	EAR99
<a href="#">PEWAN1087</a>	WR-15	58 - 62	3.5	Round Cover	EAR99

# 标准增益喇叭

所有产品均备货在库且可当天发货



PE P/N	Waveguide Type	RF Frequency Range (GHz)	Gain (dB)	Flange Type	ECCN
<a href="#">PEWAN1029</a>	WR-5	140 - 220	10	Round Cover	EAR99
<a href="#">PEWAN1030</a>	WR-5	140 - 220	15	Round Cover	EAR99
<a href="#">PEWAN1031</a>	WR-5	140 - 220	20	Round Cover	EAR99
<a href="#">PEWAN1032</a>	WR-5	140 - 220	25	Round Cover	EAR99
<a href="#">PEWAN1025</a>	WR-6	110 - 170	10	Round Cover	EAR99
<a href="#">PEWAN1026</a>	WR-6	110 - 170	15	Round Cover	EAR99
<a href="#">PEWAN1027</a>	WR-6	110 - 170	20	Round Cover	EAR99
<a href="#">PEWAN1028</a>	WR-6	110 - 170	25	Round Cover	EAR99
<a href="#">PEWAN1021</a>	WR-8	90 - 140	10	Round Cover	EAR99
<a href="#">PEWAN1022</a>	WR-8	90 - 140	15	Round Cover	EAR99
<a href="#">PEWAN1023</a>	WR-8	90 - 140	20	Round Cover	EAR99
<a href="#">PEWAN1024</a>	WR-8	90 - 140	25	Round Cover	EAR99
<a href="#">PEWAN1017</a>	WR-10	75 - 110	10	Round Cover	EAR99
<a href="#">PEWAN1018</a>	WR-10	75 - 110	15	Round Cover	EAR99
<a href="#">PEWAN1019</a>	WR-10	75 - 110	20	Round Cover	EAR99
<a href="#">PEWAN1020</a>	WR-10	75 - 110	25	Round Cover	EAR99
<a href="#">PEWAN1013</a>	WR-12	60 - 90	10	Round Cover	EAR99
<a href="#">PEWAN1014</a>	WR-12	60 - 90	15	Round Cover	EAR99
<a href="#">PEWAN1015</a>	WR-12	60 - 90	20	Round Cover	EAR99
<a href="#">PEWAN1016</a>	WR-12	60 - 90	25	Round Cover	EAR99
<a href="#">PEWAN1009</a>	WR-15	50 - 75	10	Round Cover	EAR99
<a href="#">PEWAN1010</a>	WR-15	50 - 75	15	Round Cover	EAR99
<a href="#">PEWAN1011</a>	WR-15	50 - 75	20	Round Cover	EAR99

# 标准增益喇叭

所有产品均备货在库且可当天发货



续

PE P/N	Waveguide Type	RF Frequency Range (GHz)	Gain (dB)	Flange Type	ECCN
<a href="#">PE9881-24</a>	WR-15	50 - 75	24	Round Cover	5A991
<a href="#">PEWAN1012</a>	WR-15	50 - 75	25	Round Cover	EAR99
<a href="#">PEWAN1006</a>	WR-19	40 - 60	15	Round Cover	EAR99
<a href="#">PEWAN1007</a>	WR-19	40 - 60	20	Round Cover	EAR99
<a href="#">PEWAN1008</a>	WR-19	40 - 60	25	Round Cover	EAR99
<a href="#">PE9850-10</a>	WR-28	26.5 - 40	10	Square Cover	EAR99
<a href="#">PE9850-15</a>	WR-28	26.5 - 40	15	Square Cover	EAR99
<a href="#">PE9850-20</a>	WR-28	26.5 - 40	20	Square Cover	EAR99
<a href="#">PE9851-10</a>	WR-34	22 - 33	10	Square Cover	EAR99
<a href="#">PE9851A-15</a>	WR-34	22 - 33	15	Square Cover	EAR99
<a href="#">PE9851A-20</a>	WR-34	22 - 33	20	Square Cover	EAR99
<a href="#">PE9852-10</a>	WR-42	18 - 26.5	10	Square Cover	EAR99
<a href="#">PE9852A-15</a>	WR-42	18 - 26.5	15	Square Cover	EAR99
<a href="#">PE9852-20</a>	WR-42	18 - 26.5	20	Square Cover	EAR99
<a href="#">PE9853-10</a>	WR-51	15 - 22	10	Square Cover	EAR99
<a href="#">PE9853-15</a>	WR-51	15 - 22	15	Square Cover	EAR99
<a href="#">PE9853-20</a>	WR-51	15 - 22	20	Square Cover	EAR99
<a href="#">PE9853A-20</a>	WR-51	15 - 22	20	Square Cover	EAR99
<a href="#">PE9854-10</a>	WR-62	12.4 - 18	10	Square Cover	EAR99
<a href="#">PE9854-15</a>	WR-62	12.4 - 18	15	Square Cover	EAR99
<a href="#">PE9854-20</a>	WR-62	12.4 - 18	20	Square Cover	EAR99
<a href="#">PE9855-10</a>	WR-75	10 - 15	10	Square Cover	EAR99
<a href="#">PE9855-15</a>	WR-75	10 - 15	15	Square Cover	EAR99

## 标准增益喇叭

所有产品均备货在库且可当天发货



续

PE P/N	Waveguide Type	RF Frequency Range (GHz)	Gain (dB)	Flange Type	ECCN
<a href="#">PE9855A-20</a>	WR-75	10 - 15	20	Square Cover	EAR99
<a href="#">PE9856-10</a>	WR-90	8.2 - 12.4	10	Square Cover	EAR99
<a href="#">PE9856-15</a>	WR-90	8.2 - 12.4	15	Square Cover	EAR99
<a href="#">PE9856-20</a>	WR-90	8.2 - 12.4	20	Square Cover	EAR99
<a href="#">PE9857-10</a>	WR-102	7 - 11	10	Square Cover	EAR99
<a href="#">PE9857-15</a>	WR-102	7 - 11	15	Square Cover	EAR99
<a href="#">PE9857-20</a>	WR-102	7 - 11	20	Square Cover	EAR99
<a href="#">PE9858-10</a>	WR-112	7.05 - 10	10	Square Cover	EAR99
<a href="#">PE9858-15</a>	WR-112	7.05 - 10	15	Square Cover	EAR99
<a href="#">PE9858A-20</a>	WR-112	7.05 - 10	20	Square Cover	EAR99
<a href="#">PE9859-10</a>	WR-137	5.85 - 8.2	10	CMR-137	EAR99
<a href="#">PE9859-15</a>	WR-137	5.85 - 8.2	15	CMR-137	EAR99
<a href="#">PE9859-20</a>	WR-137	5.85 - 8.2	20	CMR-137	EAR99
<a href="#">PE9860-10</a>	WR-159	4.9 - 7.05	10	CMR-159	EAR99
<a href="#">PE9860-15</a>	WR-159	4.9 - 7.05	15	CMR-159	EAR99
<a href="#">PE9860-20</a>	WR-159	4.9 - 7.05	20	CMR-159	EAR99
<a href="#">PE9861-10</a>	WR-187	3.95 - 5.85	10	CMR-187	EAR99
<a href="#">PE9861-15</a>	WR-187	3.95 - 5.85	15	CMR-187	EAR99
<a href="#">PE9861-20</a>	WR-187	3.95 - 5.85	20	CMR-187	EAR99
<a href="#">PE-W229AN001</a>	WR-229	3.3 - 4.9	10	CMR-229	EAR99
<a href="#">PE9862-15</a>	WR-229	3.3 - 4.9	15	CMR-229	EAR99
<a href="#">PE9862-20</a>	WR-229	3.3 - 4.9	20	CMR-229	EAR99
<a href="#">PE9863-10</a>	WR-284	2.6 - 3.95	10	CMR-284	EAR99

## 标准增益喇叭

所有产品均备货在库且可当天发货



续

PE P/N	Waveguide Type	RF Frequency Range (GHz)	Gain (dB)	Flange Type	ECCN
<a href="#">PEWAN1001</a>	WR-284	2.6 - 3.95	15	CMR-284	EAR99
<a href="#">PE9863-20</a>	WR-284	2.6 - 3.95	20	CMR-284	EAR99
<a href="#">PE9864-10</a>	WR-430	1.7 - 2.6	10	CPR-430F	EAR99
<a href="#">PE9864-15</a>	WR-430	1.7 - 2.6	15	CPR-430F	EAR99
<a href="#">PE9864-20</a>	WR-430	1.7 - 2.6	20	CPR-430F	EAR99

## 广角波纹喇叭

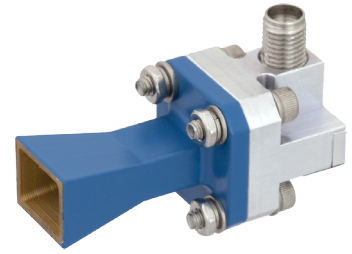
所有产品均备货在库且可当天发货



PE P/N	Waveguide Type	RF Frequency Range (GHz)	Gain (dB)	Flange Type	ECCN
<a href="#">PEWAN1073</a>	WR-10	89 - 99	10	Round Cover	EAR99
<a href="#">PEWAN1074</a>	WR-10	89 - 99	10	Round Cover	EAR99
<a href="#">PEWAN1071</a>	WR-12	72 - 82	10	Round Cover	EAR99
<a href="#">PEWAN1072</a>	WR-12	72 - 82	10	Round Cover	EAR99
<a href="#">PEWAN1069</a>	WR-15	55 - 65	10	Round Cover	EAR99
<a href="#">PEWAN1070</a>	WR-15	55 - 65	10	Round Cover	EAR99

# 带波导同轴转接头的增益喇叭

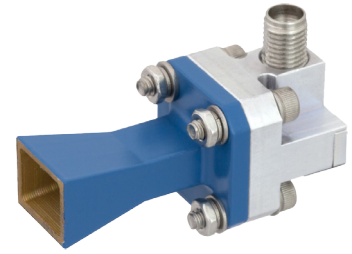
所有产品均备货在库且可当天发货



PE P/N	Waveguide Type	RF Frequency Range (GHz)	Gain (dB)	Flange Type	Connector	ECCN
<a href="#">PE9850/2F-10</a>	WR-28	40 - 26.5	10	WR-28	2.92mm Female	EAR99
<a href="#">PE9850/2F-15</a>	WR-28	40 - 26.5	15	WR-28	2.92mm Female	EAR99
<a href="#">PE9850/2F-20</a>	WR-28	40 - 26.5	20	WR-28	2.92mm Female	EAR99
<a href="#">PE9851/2F-10</a>	WR-34	33 - 22	10	WR-34	2.92mm Female	EAR99
<a href="#">PE9851/2F-15</a>	WR-34	33 - 22	15	WR-34	2.92mm Female	EAR99
<a href="#">PE9851/2F-20</a>	WR-34	33 - 22	20	WR-34	2.92mm Female	EAR99
<a href="#">PE9852/2F-10</a>	WR-42	26.5 - 18	10	WR-42	2.92mm Female	EAR99
<a href="#">PE9852/2F-15</a>	WR-42	26.5 - 18	15	WR-42	2.92mm Female	EAR99
<a href="#">PE9852/2F-20</a>	WR-42	26.5 - 18	20	WR-42	2.92mm Female	EAR99
<a href="#">PE9853/SF-10</a>	WR-51	22 - 15	10	WR-51	SMA Female	EAR99
<a href="#">PE9853/SF-15</a>	WR-51	22 - 15	15	WR-51	SMA Female	EAR99
<a href="#">PE9853/SF-20</a>	WR-51	22 - 15	20	WR-51	SMA Female	EAR99
<a href="#">PE9854/NF-10</a>	WR-62	18 - 12.4	10	WR-62	N Female	EAR99
<a href="#">PE9854/NF-15</a>	WR-62	18 - 12.4	15	WR-62	N Female	EAR99
<a href="#">PE9854/NF-20</a>	WR-62	18 - 12.4	20	WR-62	N Female	EAR99
<a href="#">PE9854/SF-10</a>	WR-62	18 - 12.4	10	WR-62	SMA Female	EAR99
<a href="#">PE9854/SF-15</a>	WR-62	18 - 12.4	15	WR-62	SMA Female	EAR99
<a href="#">PE9854/SF-20</a>	WR-62	18 - 12.4	20	WR-62	SMA Female	EAR99
<a href="#">PE9855/NF-10</a>	WR-75	15 - 10	10	WR-75	N Female	EAR99
<a href="#">PE9855/NF-15</a>	WR-75	15 - 10	15	WR-75	N Female	EAR99
<a href="#">PE9855/NF-20</a>	WR-75	15 - 10	20	WR-75	N Female	EAR99
<a href="#">PE9855/SF-10</a>	WR-75	15 - 10	10	WR-75	SMA Female	EAR99
<a href="#">PE9855/SF-15</a>	WR-75	15 - 10	15	WR-75	SMA Female	EAR99

# 带波导同轴转接头的增益喇叭

所有产品均备货在库且可当天发货

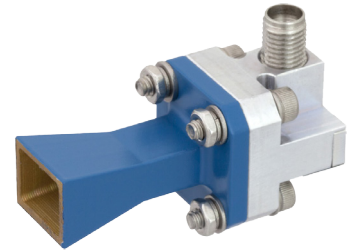


续

PE P/N	Waveguide Type	RF Frequency Range (GHz)	Gain (dB)	Flange Type	Connector	ECCN
<a href="#">PE9855/SF-20</a>	WR-75	15 - 10	20	WR-75	SMA Female	EAR99
<a href="#">PE9856/NF-10</a>	WR-90	12.4 - 8.2	10	WR-90	N Female	EAR99
<a href="#">PE9856/NF-15</a>	WR-90	12.4 - 8.2	15	WR-90	N Female	EAR99
<a href="#">PE9856/NF-20</a>	WR-90	12.4 - 8.2	20	WR-90	N Female	EAR99
<a href="#">PE9856/SF-10</a>	WR-90	12.4 - 8.2	10	WR-90	SMA Female	EAR99
<a href="#">PE9856/SF-15</a>	WR-90	12.4 - 8.2	15	WR-90	SMA Female	EAR99
<a href="#">PE9856/SF-20</a>	WR-90	12.4 - 8.2	20	WR-90	SMA Female	EAR99
<a href="#">PE9857/NF-10</a>	WR-102	11 - 7	10	WR-102	N Female	EAR99
<a href="#">PE9857/NF-15</a>	WR-102	11 - 7	15	WR-102	N Female	EAR99
<a href="#">PE9857/NF-20</a>	WR-102	11 - 7	20	WR-102	N Female	EAR99
<a href="#">PE9857/SF-10</a>	WR-102	11 - 7	10	WR-102	SMA Female	EAR99
<a href="#">PE9857/SF-15</a>	WR-102	11 - 7	15	WR-102	SMA Female	EAR99
<a href="#">PE9857/SF-20</a>	WR-102	11 - 7	20	WR-102	SMA Female	EAR99
<a href="#">PE9858/NF-10</a>	WR-112	10 - 7.05	10	WR-112	N Female	EAR99
<a href="#">PE9858/NF-15</a>	WR-112	10 - 7.05	15	WR-112	N Female	EAR99
<a href="#">PE9858/NF-20</a>	WR-112	10 - 7.05	20	WR-112	N Female	EAR99
<a href="#">PE9858/SF-10</a>	WR-112	10 - 7.05	10	WR-112	SMA Female	EAR99
<a href="#">PE9858/SF-15</a>	WR-112	10 - 7.05	15	WR-112	SMA Female	EAR99
<a href="#">PE9858/SF-20</a>	WR-112	10 - 7.05	20	WR-112	SMA Female	EAR99
<a href="#">PE9859/NF-10</a>	WR-137	8.2 - 5.85	10	WR-137	N Female	EAR99
<a href="#">PE9859/NF-15</a>	WR-137	8.2 - 5.85	15	WR-137	N Female	EAR99
<a href="#">PE9859/NF-20</a>	WR-137	8.2 - 5.85	20	WR-137	N Female	EAR99
<a href="#">PE9859/SF-10</a>	WR-137	8.2 - 5.85	10	WR-137	SMA Female	EAR99

## 带波导同轴转接头的增益喇叭

所有产品均备货在库且可当天发货

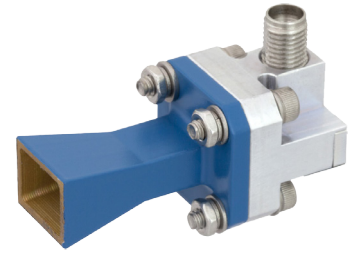


续

PE P/N	Waveguide Type	RF Frequency Range (GHz)	Gain (dB)	Flange Type	Connector	ECCN
<a href="#">PE9859/SF-15</a>	WR-137	8.2 - 5.85	15	WR-137	SMA Female	EAR99
<a href="#">PE9859/SF-20</a>	WR-137	8.2 - 5.85	20	WR-137	SMA Female	EAR99
<a href="#">PE9860/NF-10</a>	WR-159	7.05 - 4.9	10	WR-159	N Female	EAR99
<a href="#">PE9860/NF-15</a>	WR-159	7.05 - 4.9	15	WR-159	N Female	EAR99
<a href="#">PE9860/NF-20</a>	WR-159	7.05 - 4.9	20	WR-159	N Female	EAR99
<a href="#">PE9860/SF-10</a>	WR-159	7.05 - 4.9	10	WR-159	SMA Female	EAR99
<a href="#">PE9860/SF-15</a>	WR-159	7.05 - 4.9	15	WR-159	SMA Female	EAR99
<a href="#">PE9860/SF-20</a>	WR-159	7.05 - 4.9	20	WR-159	SMA Female	EAR99
<a href="#">PE9861/NF-10</a>	WR-187	5.85 - 3.95	10	WR-187	N Female	EAR99
<a href="#">PE9861/NF-15</a>	WR-187	5.85 - 3.95	15	WR-187	N Female	EAR99
<a href="#">PE9861/NF-20</a>	WR-187	5.85 - 3.95	20	WR-187	N Female	EAR99
<a href="#">PE9861/SF-10</a>	WR-187	5.85 - 3.95	10	WR-187	SMA Female	EAR99
<a href="#">PE9861/SF-15</a>	WR-187	5.85 - 3.95	15	WR-187	SMA Female	EAR99
<a href="#">PE9861/SF-20</a>	WR-187	5.85 - 3.95	20	WR-187	SMA Female	EAR99
<a href="#">PE9862/NF-15</a>	WR-229	4.9 - 3.3	15	WR-229	N Female	EAR99
<a href="#">PE9862/NF-20</a>	WR-229	4.9 - 3.3	20	WR-229	N Female	EAR99
<a href="#">PE9862/SF-15</a>	WR-229	4.9 - 3.3	15	WR-229	SMA Female	EAR99
<a href="#">PE9862/SF-20</a>	WR-229	4.9 - 3.3	20	WR-229	SMA Female	EAR99
<a href="#">PE9863/NF-10</a>	WR-284	3.95 - 2.6	10	WR-284	N Female	EAR99
<a href="#">PE9863/NF-20</a>	WR-284	3.95 - 2.6	20	WR-284	N Female	EAR99
<a href="#">PE9863/SF-10</a>	WR-284	3.95 - 2.6	10	WR-284	SMA Female	EAR99
<a href="#">PE9863/SF-20</a>	WR-284	3.95 - 2.6	20	WR-284	SMA Female	EAR99
<a href="#">PE9864/NF-10</a>	WR-430	2.6 - 1.7	10	WR-430	N Female	EAR99

## 带波导同轴转接头的增益喇叭

所有产品均备货在库且可当天发货



续

PE P/N	Waveguide Type	RF Frequency Range (GHz)	Gain (dB)	Flange Type	Connector	ECCN
<a href="#">PE9864/NF-15</a>	WR-430	2.6 - 1.7	15	WR-430	N Female	EAR99
<a href="#">PE9864/NF-20</a>	WR-430	2.6 - 1.7	20	WR-430	N Female	EAR99
<a href="#">PE9864/SF-10</a>	WR-430	2.6 - 1.7	10	WR-430	SMA Female	EAR99
<a href="#">PE9864/SF-15</a>	WR-430	2.6 - 1.7	15	WR-430	SMA Female	EAR99
<a href="#">PE9864/SF-20</a>	WR-430	2.6 - 1.7	20	WR-430	SMA Female	EAR99

## 波导同轴转换器

所有产品均备货在库且可当天发货



PE P/N	Waveguide Type	RF Frequency Range (GHz)	Maximum VSWR	Flange Type	Connector	ECCN
<a href="#">PE-W10CA001</a>	WR-10	110 - 75	1.9:1	Round Cover UG-387/U-Mod	1.0mm Female	EAR99
<a href="#">PE-W10CA002</a>	WR-10	110 - 75	1.9:1	Round Cover UG-387/U-Mod	1.0mm Male	EAR99
<a href="#">PE-W12CA001</a>	WR-12	90 - 60	1.67:1	Round Cover UG-387/U	1.0mm Female	EAR99
<a href="#">PE-W12CA002</a>	WR-12	90 - 60	1.67:1	Round Cover UG-387/U	1.0mm Male	EAR99
<a href="#">PE-W15CA001</a>	WR-15	65 - 50	1.44:1	Round Cover UG-385/U	1.85mm Female	EAR99
<a href="#">PE-W15CA002</a>	WR-15	65 - 50	1.44:1	Round Cover UG-385/U	1.85mm Male	EAR99
<a href="#">PE-W19CA001</a>	WR-19	60 - 40	1.38:1	Round Cover UG-383/U-Mod	1.85mm Female	EAR99
<a href="#">PE-W19CA002</a>	WR-19	60 - 40	1.38:1	Round Cover UG-383/U-Mod	1.85mm Male	EAR99
<a href="#">PE-W22CA001</a>	WR-22	50 - 33	1.33:1	Round Cover UG-383/U	2.4mm Female	EAR99
<a href="#">PE-W22CA002</a>	WR-22	50 - 33	1.33:1	Round Cover UG-383/U	2.4mm Male	EAR99
<a href="#">PE-W28CA001</a>	WR-28	40 - 26.5	1.29:1	Square Cover UG-599/U	2.92mm Female	EAR99
<a href="#">PE-W28CA002</a>	WR-28	40 - 26.5	1.29:1	Square Cover UG-599/U	2.92mm Male	EAR99

# 波导同轴转换器

所有产品均备货在库且可当天发货



续

PE P/N	Waveguide Type	RF Frequency Range (GHz)	Maximum VSWR	Flange Type	Connector	ECCN
<a href="#">PEWCA1000</a>	WR-28	40 - 26.5	1.3:1	Square Cover UG-599/U	2.92mm Female	EAR99
<a href="#">PEWCA1020</a>	WR-28	40 - 26.5	1.3:1	Square Cover UG-599/U	2.92mm Female	EAR99
<a href="#">PE9826</a>	WR-28	40 - 26.5	1.4:1	Square Cover	2.92mm Female	EAR99
<a href="#">PEWCA1001</a>	WR-34	33 - 22	1.25:1	Square Cover UG-1530/U	2.92mm Female	EAR99
<a href="#">PEWCA1021</a>	WR-34	33 - 22	1.25:1	Square Cover UG-1530/U	2.92mm Female	EAR99
<a href="#">PE9827</a>	WR-34	33 - 22	1.4:1	Square Cover	2.92mm Female	EAR99
<a href="#">PEWCA1026</a>	WR-42	26.5 - 18	1.03:1	Square Cover UG-597/U	SMA Female	EAR99
<a href="#">PEWCA1019</a>	WR-42	26.5 - 18	1.25:1	Square Cover UG-595/U	2.92mm Female	EAR99
<a href="#">PEWCA1018</a>	WR-42	26.5 - 18	1.25:1	Square Cover UG-595/U	SMA Female	EAR99
<a href="#">PE-W42CA001</a>	WR-42	26.5 - 18	1.29:1	Square Cover UG-595/U	2.92mm Female	EAR99
<a href="#">PE-W42CA002</a>	WR-42	26.5 - 18	1.29:1	Square Cover UG-595/U	2.92mm Male	EAR99
<a href="#">PEWCA1022</a>	WR-42	26.5 - 18	1.3:1	Square Cover UG-597/U	2.92mm Female	EAR99
<a href="#">PEWCA1070</a>	WR-42	26.5 - 18	1.3:1	Square Cover UG-597/U	2.92mm Female	EAR99
<a href="#">PE9878</a>	WR-42	26.5 - 18	1.4:1	Square Cover	2.92mm Female	EAR99
<a href="#">PE9813A</a>	WR-42	26.5 - 18	1.4:1	Square Cover UG-595/U	2.92mm Male	EAR99
<a href="#">PE9812</a>	WR-42	26.5 - 18	1.4:1	Square Type	2.92mm Female	EAR99
<a href="#">PEWCA1002</a>	WR-51	22 - 15	1.25:1	Square Cover	SMA Female	EAR99
<a href="#">PEWCA1027</a>	WR-51	22 - 15	1.25:1	Square Cover	SMA Female	EAR99
<a href="#">PE9828</a>	WR-51	22 - 15	1.3:1	Square Type	SMA Female	EAR99
<a href="#">PE9879</a>	WR-51	22 - 15	1.3:1	Square Type	SMA Female	EAR99
<a href="#">PE9809</a>	WR-62	18 - 12.4	1.2:1	Square Cover UG-1665/U	SMA Male	EAR99
<a href="#">PEWCA1028</a>	WR-62	18 - 12.4	1.25:1	Square Cover UG-1665/U	N Female	EAR99
<a href="#">PEWCA1003</a>	WR-62	18 - 12.4	1.25:1	Square Cover UG-1665/U	SMA Female	EAR99

# 波导同轴转换器

所有产品均备货在库且可当天发货



续

PE P/N	Waveguide Type	RF Frequency Range (GHz)	Maximum VSWR	Flange Type	Connector	ECCN
<a href="#">PEWCA1023</a>	WR-62	18 - 12.4	1.25:1	Square Cover UG-1665/U	SMA Female	EAR99
<a href="#">PEWCA1071</a>	WR-62	18 - 12.4	1.3:1	Square Cover UG-1665/U	SMA Female	EAR99
<a href="#">PE9803</a>	WR-62	18 - 12.4	1.3:1	Square Type	SMA Female	EAR99
<a href="#">PE9806</a>	WR-62	18 - 12.4	1.4:1	Square Cover	N Male	EAR99
<a href="#">PE9866</a>	WR-62	18 - 12.4	1.4:1	Square Type	N Female	EAR99
<a href="#">PE9875</a>	WR-62	18 - 12.4	1.4:1	Square Type	N Female	EAR99
<a href="#">PE9846</a>	WR-62	18 - 12.4	1.4:1	Square Type	SMA Female	EAR99
<a href="#">PEWCA1005</a>	WR-75	15 - 10	1.25:1	Square Cover	N Female	EAR99
<a href="#">PEWCA1029</a>	WR-75	15 - 10	1.25:1	Square Cover	N Female	EAR99
<a href="#">PEWCA1004</a>	WR-75	15 - 10	1.25:1	Square Cover	SMA Female	EAR99
<a href="#">PEWCA1024</a>	WR-75	15 - 10	1.25:1	Square Cover	SMA Female	EAR99
<a href="#">PEWCA1074</a>	WR-75	15 - 10	1.3:1	Square Cover	N Female	EAR99
<a href="#">PE9874</a>	WR-75	15 - 10	1.3:1	Square Type	N Female	EAR99
<a href="#">PE9819</a>	WR-75	15 - 10	1.3:1	Square Type	SMA Female	EAR99
<a href="#">PE9867</a>	WR-75	15 - 10	1.4:1	Square Type	N Female	EAR99
<a href="#">PE9847</a>	WR-75	15 - 10	1.4:1	Square Type	SMA Female	EAR99
<a href="#">PE9815</a>	WR-90	12.4 - 8.2	1.2:1	Square Cover	7mm Sexless	EAR99
<a href="#">PEWCA1033</a>	WR-90	12.4 - 8.2	1.25:1	CMR-90	N Female	EAR99
<a href="#">PEWCA1032</a>	WR-90	12.4 - 8.2	1.25:1	CMR-90	SMA Female	EAR99
<a href="#">PEWCA1009</a>	WR-90	12.4 - 8.2	1.25:1	CPR-90G	N Female	EAR99
<a href="#">PEWCA1036</a>	WR-90	12.4 - 8.2	1.25:1	CPR-90G	N Female	EAR99
<a href="#">PEWCA1035</a>	WR-90	12.4 - 8.2	1.25:1	CPR-90G	N Male	EAR99
<a href="#">PEWCA1007</a>	WR-90	12.4 - 8.2	1.25:1	CPR-90G	SMA Female	EAR99

# 波导同轴转换器

所有产品均备货在库且可当天发货



续

PE P/N	Waveguide Type	RF Frequency Range (GHz)	Maximum VSWR	Flange Type	Connector	ECCN
<a href="#">PEWCA1034</a>	WR-90	12.4 - 8.2	1.25:1	CPR-90G	SMA Female	EAR99
<a href="#">PE9868</a>	WR-90	12.4 - 8.2	1.25:1	Square Cover UG-135/U	N Female	EAR99
<a href="#">PEWCA1031</a>	WR-90	12.4 - 8.2	1.25:1	Square Cover UG-135/U	N Female	EAR99
<a href="#">PEWCA1008</a>	WR-90	12.4 - 8.2	1.25:1	Square Cover UG-39/U	N Female	EAR99
<a href="#">PEWCA1025</a>	WR-90	12.4 - 8.2	1.25:1	Square Cover UG-135/U	SMA Female	EAR99
<a href="#">PEWCA1030</a>	WR-90	12.4 - 8.2	1.25:1	Square Cover UG-135/U	SMA Male	EAR99
<a href="#">PEWCA1006</a>	WR-90	12.4 - 8.2	1.25:1	Square Cover UG-39/U	SMA Female	EAR99
<a href="#">PE9883</a>	WR-90	12.4 - 8.2	1.25:1	UDR100	N Female	EAR99
<a href="#">PE9873</a>	WR-90	12.4 - 8.2	1.3:1	CPR-90G	N Female	EAR99
<a href="#">PE9801</a>	WR-90	12.4 - 8.2	1.3:1	Square Type	N Female	EAR99
<a href="#">PE9889</a>	WR-90	12.4 - 8.2	1.3:1	Square Type	N Male	EAR99
<a href="#">PE9804</a>	WR-90	12.4 - 8.2	1.3:1	Square Type	SMA Female	EAR99
<a href="#">PE9848</a>	WR-90	12.4 - 8.2	1.3:1	Square Type	SMA Female	EAR99
<a href="#">PE9810</a>	WR-90	12.4 - 8.2	1.3:1	Square Type	SMA Male	EAR99
<a href="#">PE9869</a>	WR-102	11 - 7	1.25:1	Square Cover	N Female	EAR99
<a href="#">PEWCA1038</a>	WR-102	11 - 7	1.25:1	Square Cover UG-1493/U	N Female	EAR99
<a href="#">PEWCA1039</a>	WR-102	11 - 7	1.25:1	Square Cover UG-1493/U	N Male	EAR99
<a href="#">PE9805</a>	WR-102	11 - 7	1.25:1	Square Cover UG-1493/U	SMA Female	EAR99
<a href="#">PEWCA1037</a>	WR-102	10 - 7	1.25:1	Square Cover UG-1493/U	SMA Female	EAR99
<a href="#">PE9811</a>	WR-102	11 - 7	1.3:1	Square Cover	SMA Male	EAR99
<a href="#">PE9802</a>	WR-102	11 - 7	1.3:1	Square Type	N Female	EAR99
<a href="#">PE9890</a>	WR-102	11 - 7	1.3:1	Square Type	N Male	EAR99
<a href="#">PE9871</a>	WR-102	11 - 7	1.4:1	Square Type	SMA Female	EAR99

# 波导同轴转换器

所有产品均备货在库且可当天发货



续

PE P/N	Waveguide Type	RF Frequency Range (GHz)	Maximum VSWR	Flange Type	Connector	ECCN
<a href="#">PEWCA1043</a>	WR-112	10 - 7.05	1.25:1	CMR-112	N Female	EAR99
<a href="#">PEWCA1042</a>	WR-112	10 - 7.05	1.25:1	CMR-112	SMA Female	EAR99
<a href="#">PEWCA1013</a>	WR-112	10 - 7.05	1.25:1	CPR-112G	N Female	EAR99
<a href="#">PEWCA1045</a>	WR-112	10 - 7.05	1.25:1	CPR-112G	N Female	EAR99
<a href="#">PEWCA1011</a>	WR-112	10 - 7.05	1.25:1	CPR-112G	SMA Female	EAR99
<a href="#">PEWCA1044</a>	WR-112	10 - 7.05	1.25:1	CPR-112G	SMA Female	EAR99
<a href="#">PEWCA1041</a>	WR-112	10 - 7.05	1.25:1	Square Cover UG-138/U	N Female	EAR99
<a href="#">PEWCA1012</a>	WR-112	10 - 7.05	1.25:1	Square Cover UG-51/U	N Female	EAR99
<a href="#">PEWCA1040</a>	WR-112	10 - 7.05	1.25:1	Square Cover UG-138/U	SMA Female	EAR99
<a href="#">PEWCA1010</a>	WR-112	10 - 7.05	1.25:1	Square Cover UG-51/U	SMA Female	EAR99
<a href="#">PE9837</a>	WR-112	10 - 7.05	1.3:1	CPR-112G	N Female	EAR99
<a href="#">PE9820</a>	WR-112	10 - 7.05	1.3:1	Square Type	N Female	EAR99
<a href="#">PE9870</a>	WR-112	10 - 7.05	1.3:1	Square Type	N Female	EAR99
<a href="#">PE9884</a>	WR-112	10 - 7.05	1.3:1	Square Type	SMA Female	EAR99
<a href="#">PE9865</a>	WR-112	10 - 7.05	1.4:1	Square Type	SMA Female	EAR99
<a href="#">PEWCA1049</a>	WR-137	8.2 - 5.85	1.25:1	CMR-137	N Female	EAR99
<a href="#">PEWCA1048</a>	WR-137	8.2 - 5.85	1.25:1	CMR-137	SMA Female	EAR99
<a href="#">PEWCA1017</a>	WR-137	8.2 - 5.85	1.25:1	CPR-137G	N Female	EAR99
<a href="#">PEWCA1051</a>	WR-137	8.2 - 5.85	1.25:1	CPR-137G	N Female	EAR99
<a href="#">PEWCA1015</a>	WR-137	8.2 - 5.85	1.25:1	CPR-137G	SMA Female	EAR99
<a href="#">PEWCA1050</a>	WR-137	8.2 - 5.85	1.25:1	CPR-137G	SMA Female	EAR99
<a href="#">PEWCA1016</a>	WR-137	8.2 - 5.85	1.25:1	Round Cover UG-344/U	N Female	EAR99
<a href="#">PEWCA1047</a>	WR-137	8.2 - 5.85	1.25:1	Round Cover UG-441/U	N Female	EAR99

# 波导同轴转换器

所有产品均备货在库且可当天发货



续

PE P/N	Waveguide Type	RF Frequency Range (GHz)	Maximum VSWR	Flange Type	Connector	ECCN
<a href="#">PEWCA1014</a>	WR-137	8.2 - 5.85	1.25:1	Round Cover UG-344/U	SMA Female	EAR99
<a href="#">PEWCA1046</a>	WR-137	8.2 - 5.85	1.25:1	Round Cover UG-441/U	SMA Female	EAR99
<a href="#">PE9876</a>	WR-137	8.2 - 5.85	1.3:1	CMR-137	N Female	EAR99
<a href="#">PE9830</a>	WR-137	8.2 - 5.85	1.3:1	CMR-137	SMA Female	EAR99
<a href="#">PE9838</a>	WR-137	8.2 - 5.85	1.3:1	CPR-137G	N Female	EAR99
<a href="#">PEWCA1053</a>	WR-159	7.05 - 4.9	1.25:1	CMR-159	N Female	EAR99
<a href="#">PEWCA1052</a>	WR-159	7.05 - 4.9	1.25:1	CMR-159	SMA Female	EAR99
<a href="#">PEWCA1055</a>	WR-159	7.05 - 4.9	1.25:1	CPR-159G	N Female	EAR99
<a href="#">PEWCA1054</a>	WR-159	7.05 - 4.9	1.25:1	CPR-159G	SMA Female	EAR99
<a href="#">PE9821</a>	WR-159	7.05 - 4.9	1.3:1	CMR-159	N Female	EAR99
<a href="#">PE9831</a>	WR-159	7.05 - 4.9	1.3:1	CMR-159	SMA Female	EAR99
<a href="#">PE9839</a>	WR-159	7.05 - 4.9	1.3:1	CPR-159G	N Female	EAR99
<a href="#">PEWCA1058</a>	WR-187	5.85 - 3.95	1.25:1	CMR-187	N Female	EAR99
<a href="#">PEWCA1057</a>	WR-187	5.85 - 3.95	1.25:1	CMR-187	SMA Female	EAR99
<a href="#">PEWCA1059</a>	WR-187	5.85 - 3.95	1.25:1	CPR-187G	N Female	EAR99
<a href="#">PEWCA1056</a>	WR-187	5.85 - 3.95	1.25:1	Round Cover UG-407/U	N Female	EAR99
<a href="#">PE9822</a>	WR-187	5.85 - 3.95	1.3:1	CMR-187	N Female	EAR99
<a href="#">PE9832</a>	WR-187	5.85 - 3.95	1.3:1	CMR-187	SMA Female	EAR99
<a href="#">PE9840</a>	WR-187	5.85 - 3.95	1.3:1	CPR-187G	N Female	EAR99
<a href="#">PEWCA1060</a>	WR-229	4.9 - 3.3	1.25:1	CMR-229	N Female	EAR99
<a href="#">PEWCA1062</a>	WR-229	4.9 - 3.3	1.25:1	CPR-229G	N Female	EAR99
<a href="#">PEWCA1061</a>	WR-229	4.9 - 3.3	1.25:1	CPR-229G	SMA Female	EAR99
<a href="#">PE9823</a>	WR-229	4.9 - 3.3	1.3:1	CMR-229	N Female	EAR99

# 波导同轴转换器

所有产品均备货在库且可当天发货



续

PE P/N	Waveguide Type	RF Frequency Range (GHz)	Maximum VSWR	Flange Type	Connector	ECCN
<a href="#">PE9833</a>	WR-229	4.9 - 3.3	1.3:1	CMR-229	SMA Female	EAR99
<a href="#">PE9877</a>	WR-229	4.9 - 3.3	1.3:1	CPR-229G	N Female	EAR99
<a href="#">PEWCA1064</a>	WR-284	3.95 - 2.6	1.25:1	CMR-284	N Female	EAR99
<a href="#">PE9834</a>	WR-284	3.95 - 2.6	1.25:1	CMR-284	SMA Female	EAR99
<a href="#">PEWCA1065</a>	WR-284	3.95 - 2.6	1.25:1	CPR-284G	N Female	EAR99
<a href="#">PEWCA1063</a>	WR-284	3.95 - 2.6	1.25:1	Round Cover UG-584/U	N Female	EAR99
<a href="#">PE9824</a>	WR-284	3.95 - 2.6	1.3:1	CMR-284	N Female	EAR99
<a href="#">PE9842</a>	WR-284	3.95 - 2.6	1.3:1	CPR-284G	N Female	EAR99
<a href="#">PE9882</a>	WR-340	3.3 - 2.2	1.25:1	CPR-340F	N Female	EAR99
<a href="#">PEWCA1066</a>	WR-340	3.3 - 2.2	1.25:1	CPR-340F	N Female	EAR99
<a href="#">PEWCA1067</a>	WR-340	3.3 - 2.2	1.25:1	CPR-340G	N Female	EAR99
<a href="#">PEWCA1068</a>	WR-430	2.6 - 1.7	1.25:1	CPR-430F	N Female	EAR99
<a href="#">PEWCA1069</a>	WR-430	2.6 - 1.7	1.25:1	CPR-430G	N Female	EAR99
<a href="#">PE9872</a>	WR-430	2.6 - 1.7	1.3:1	CPR-430F	N Female	EAR99
<a href="#">PE9835</a>	WR-430	2.6 - 1.7	1.3:1	CPR-430F	SMA Female	EAR99
<a href="#">PE9843</a>	WR-430	2.6 - 1.7	1.3:1	CPR-430G	N Female	EAR99



## 您射频部件的即时来源和射频专家方案

自1972年以来，Pasternack始终致力于以即时发货服务为全球工程师提供最大的射频、微波、毫米波现货元器件、组件、设备选型库。这一业内最全的选型库覆盖超过4万种互连、无源、有源、天线及测试测量产品，包含107个品类，从常见物料到难寻器件，一应俱全。同时，我们的选型库现货率高达99.4%，一件起发，当天发货。

为了确保您能够第一时间获得最专业的技术支持，我们的产品线工程师和专家随时待命，为您解决技术难题，为您的项目提供针对性的创意解决方案。同时，Pasternack的销售和客服团队7x24小时通过电话、电子邮件以及在线沟通工具为您提供帮助。我们还拥有遍布世界各地的国际分销合作伙伴网络，无论您身在何处，都可以获得同样高品质的服务与支持。

## 访问Pasternack.cn，您的射频产品超级市场

所有产品备有海量库存，当天发货！

- ✓ 基于产品参数的在线搜索功能助您快速选型
- ✓ 在线查询4万余种元器件和组件的价格及库存信息
- ✓ 产品规格书包含详细参数和CAD图纸
- ✓ 同一页面结账，为您节省时间并简化购买流程
- ✓ “工程师资源中心”提供射频计算器、各种转换工具、RF-Opedia射频术语汇编以及其他丰富资源
- ✓ 在线下载《射频产品选型指南》
- ✓ 一件起发，当天发货
- ✓ 客户信用交易制度



# 专注射频超过45年， 荣耀超越产品本身

## 超过25万种定制电缆组件配置， 同样支持当天发货！

- 超过2,030种射频同轴连接器可供选择
- 包括双轴电缆在内的123种同轴电缆
- 可依据客户需求定制电缆长度（公制或英制）
- 包含高可靠性和低PIM组件



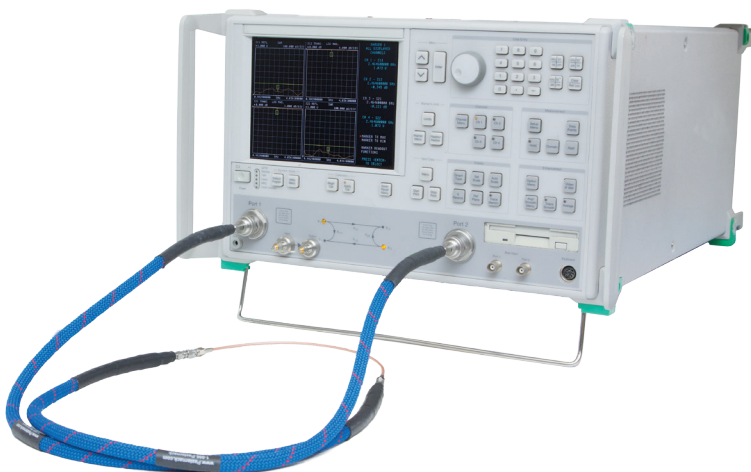
## 定制组件增值 服务，包括...

- 定制护套/热收缩管
- 定制标签
- 有偿提供测试图表
- 直角型连接器同步定制
- 高性能测试电缆提供序列化测试数据



## 全方位测试服务，包括...

- 高达65 GHz的射频测试
- 低至117 dBm (-160dBc) 的PIM测试
- $\pm 2^\circ/\text{GHz}$ 的相位匹配测试
- 高达5,000V直流及6,000V交流的耐压 (Hi-Pot) 测试



本资料所含信息的准确度基于出版时我们的最大知识范围。为了实现改善目的，其中的产品和/或产品文字描述有可能还需做出修改，Pasternack保留在必要时做出此等修改的权利。在本资料中，除非另有说明，否则所有规格参数均为标称值。对于本资料中的产品是否适用于任何特定用途，Pasternack不作任何陈述或保证。此外，对于因任何产品或产品文字描述的使用造成的任何法律责任，Pasternack一概不予承担。

# 最全的射频/微波种类可当天发货



+

成千上万种更多产品，今天就可提供

Pasternack经销

电话: 010-53652003

电邮: sales@zztc-china.com

官网: www.zztc-china.com

Pasternack美国总部

地址: 17802 Fitch

Irvine, CA 92614 USA

官网: www.pasternack.com