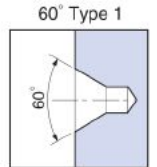
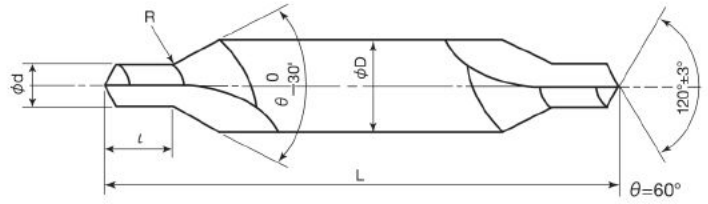




# 岡部規格 1形 60°・左刃60° (Material SKH51:HSS)



コーティング種類 Coated Type  
**G** : TiN / **V** : TiCN系 / **VA** : TiAlN系

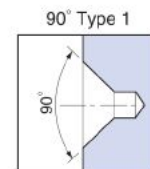
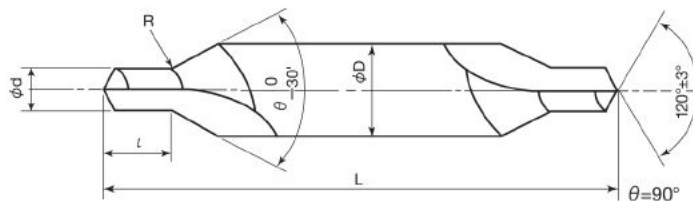
単位:mm Unit:mm

商品コード Item Code					呼び Nominal size	刃径 (d) Drill Dia.	刃長 (l) Drill Length	胴径 (D) Shank Dia.	全長 (L) Overall Length	インチ径 (d) Drill Dia.
60°	Gコーティング60° G Coated60°	Vコーティング60° V Coated60°	VAコーティング60° VA Coated60°	左刃60° Left60°						
CD0.3	GCD0.3	VCD0.3	VACD0.3	CDL0.3	0.3	0.3	0.4	3.0	31	—
CD0.4	GCD0.4	VCD0.4	VACD0.4	CDL0.4	0.4	0.4	0.5	3.0	31	1/64
CD0.5	GCD0.5	VCD0.5	VACD0.5	CDL0.5	0.5	0.5	0.6	3.0	31	—
CD0.6	GCD0.6	VCD0.6	VACD0.6	CDL0.6	0.6	0.6	0.7	3.5	36	—
CD0.7	GCD0.7	VCD0.7	VACD0.7	CDL0.7	0.7	0.7	0.9	3.5	36	—
CD0.8	GCD0.8	VCD0.8	VACD0.8	CDL0.8	0.8	0.8	1.0	4.0	36	1/32
CD0.9	GCD0.9	VCD0.9	VACD0.9	CDL0.9	0.9	0.9	1.1	4.0	36	—
CD1.0	GCD1.0	VCD1.0	VACD1.0	CDL1.0	1.0	1.0	1.3	4.0	36	—
CD1.2	GCD1.2	VCD1.2	VACD1.2	CDL1.2	1.2	1.2	1.6	5.0	42	3/64
CD1.5	GCD1.5	VCD1.5	VACD1.5	CDL1.5	1.5	1.5	2.0	5.0	42	1/16
CD2X5	GCD2X5	VCD2X5	VACD2X5	CDL2X5	2X5	2.0	2.6	5.0	42	—
CD2.0	GCD2.0	VCD2.0	VACD2.0	CDL2.0	2.0	2.0	2.6	6.0	47	5/64
CD2.5X6	GCD2.5X6	VCD2.5X6	VACD2.5X6	CDL2.5X6	2.5X6	2.5	3.2	6.0	47	—
CD2.5	GCD2.5	VCD2.5	VACD2.5	CDL2.5	2.5	2.5	3.2	7.7	57	3/32
CD3.0	GCD3.0	VCD3.0	VACD3.0	CDL3.0	3.0	3.0	3.9	7.7	57	—
CD3X8	GCD3X8	VCD3X8	VACD3X8	CDL3X8	3X8	3.0	3.9	8.0	53	—
CD3.2	GCD3.2	VCD3.2	VACD3.2	CDL3.2	3.2	3.2	4.2	7.7	57	1/8
CD4X10	GCD4X10	VCD4X10	VACD4X10	CDL4X10	4X10	4.0	5.2	10.0	69	—
CD4.0	GCD4.0	VCD4.0	VACD4.0	CDL4.0	4.0	4.0	5.2	11.0	69	5/32
CD5.0	GCD5.0	VCD5.0	VACD5.0	CDL5.0	5.0	5.0	6.6	11.0	69	3/16
CD5X12	GCD5X12	VCD5X12	VACD5X12	CDL5X12	5X12	5.0	6.6	12.0	69	—
CD6X16	GCD6X16	VCD6X16	VACD6X16	CDL6X16	6X16	6.0	7.8	16.0	90	—
CD6.0	GCD6.0	VCD6.0	VACD6.0	CDL6.0	6.0	6.0	7.8	18.0	95	—
CD1/4	GCD1/4	VCD1/4	VACD1/4	CDL1/4	1/4	6.3	8.3	18.0	100	1/4
CD8.0	GCD8.0	VCD8.0	VACD8.0	CDL8.0	8.0	8.0	10.4	18.0	100	5/16
CD3/8	GCD3/8	VCD3/8	VACD3/8	CDL3/8	3/8	9.5	12.5	18.0	100	3/8
CD10.0	GCD10.0	VCD10.0	VACD10.0	CDL10.0	10.0	10.0	13.1	18.0	100	—
CD12X22	GCD12X22	VCD12X22	VACD12X22	CDL12X22	12X22	12.0	15.7	22.0	110	—
CD12X25	GCD12X25	VCD12X25	VACD12X25	CDL12X25	12X25	12.0	15.7	25.0	120	—

※インチサイズ:受注生産 ※inch size : made to order



# 岡部規格 1形 90°・左刃90° (Material SKH51:HSS)



コーティング種類 Coated Type  
G : TiN / V : TiCN系 / VA : TiAlN系

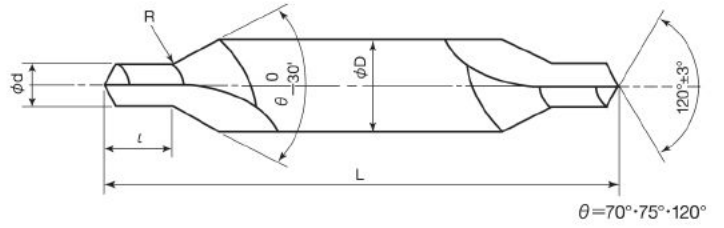
単位:mm Unit:mm

商品コード Item Code					呼び Nominal size	刃径 (d) Drill Dia.	刃長 (l) Drill Length	胴径 (D) Shank Dia.	全長 (L) Overall Length	インチ径 (d) Drill Dia.
90°	Gコーティング90° G Coated90°	Vコーティング90° V Coated90°	VAコーティング90° VA Coated90°	左刃90° Left90°						
90CD0.3	90GCD0.3	90VCD0.3	90VACD0.3	90CDL0.3	0.3	0.3	0.4	3.0	31	—
90CD0.4	90GCD0.4	90VCD0.4	90VACD0.4	90CDL0.4	0.4	0.4	0.5	3.0	31	1/64
90CD0.5	90GCD0.5	90VCD0.5	90VACD0.5	90CDL0.5	0.5	0.5	0.6	3.0	31	—
90CD0.6	90GCD0.6	90VCD0.6	90VACD0.6	90CDL0.6	0.6	0.6	0.7	3.5	36	—
90CD0.7	90GCD0.7	90VCD0.7	90VACD0.7	90CDL0.7	0.7	0.7	0.9	3.5	36	—
90CD0.8	90GCD0.8	90VCD0.8	90VACD0.8	90CDL0.8	0.8	0.8	1.0	4.0	36	1/32
90CD0.9	90GCD0.9	90VCD0.9	90VACD0.9	90CDL0.9	0.9	0.9	1.1	4.0	36	—
90CD1.0	90GCD1.0	90VCD1.0	90VACD1.0	90CDL1.0	1.0	1.0	1.3	4.0	36	—
90CD1.2	90GCD1.2	90VCD1.2	90VACD1.2	90CDL1.2	1.2	1.2	1.6	5.0	42	3/64
90CD1.5	90GCD1.5	90VCD1.5	90VACD1.5	90CDL1.5	1.5	1.5	2.0	5.0	42	1/16
90CD2X5	90GCD2X5	90VCD2X5	90VACD2X5	90CDL2X5	2X5	2.0	2.6	5.0	42	—
90CD2.0	90GCD2.0	90VCD2.0	90VACD2.0	90CDL2.0	2.0	2.0	2.6	6.0	47	5/64
90CD2.5X6	90GCD2.5X6	90VCD2.5X6	90VACD2.5X6	90CDL2.5X6	2.5X6	2.5	3.2	6.0	47	—
90CD2.5	90GCD2.5	90VCD2.5	90VACD2.5	90CDL2.5	2.5	2.5	3.2	7.7	57	3/32
90CD3.0	90GCD3.0	90VCD3.0	90VACD3.0	90CDL3.0	3.0	3.0	3.9	7.7	57	—
90CD3X8	90GCD3X8	90VCD3X8	90VACD3X8	90CDL3X8	3X8	3.0	3.9	8.0	53	—
90CD3.2	90GCD3.2	90VCD3.2	90VACD3.2	90CDL3.2	3.2	3.2	4.2	7.7	57	1/8
90CD4X10	90GCD4X10	90VCD4X10	90VACD4X10	90CDL4X10	4X10	4.0	5.2	10.0	69	—
90CD4.0	90GCD4.0	90VCD4.0	90VACD4.0	90CDL4.0	4.0	4.0	5.2	11.0	69	5/32
90CD5.0	90GCD5.0	90VCD5.0	90VACD5.0	90CDL5.0	5.0	5.0	6.6	11.0	69	3/16
90CD5X12	90GCD5X12	90VCD5X12	90VACD5X12	90CDL5X12	5X12	5.0	6.6	12.0	69	—
90CD6X16	90GCD6X16	90VCD6X16	90VACD6X16	90CDL6X16	6X16	6.0	7.8	16.0	90	—
90CD6.0	90GCD6.0	90VCD6.0	90VACD6.0	90CDL6.0	6.0	6.0	7.8	18.0	95	—
90CD1/4	90GCD1/4	90VCD1/4	90VACD1/4	90CDL1/4	1/4	6.3	8.3	18.0	100	1/4
90CD8.0	90GCD8.0	90VCD8.0	90VACD8.0	90CDL8.0	8.0	8.0	10.4	18.0	100	5/16
90CD3/8	90GCD3/8	90VCD3/8	90VACD3/8	90CDL3/8	3/8	9.5	12.5	18.0	100	3/8
90CD10.0	90GCD10.0	90VCD10.0	90VACD10.0	90CDL10.0	10.0	10.0	13.1	18.0	100	—
90CD12X22	90GCD12X22	90VCD12X22	90VACD12X22	90CDL12X22	12X22	12.0	15.7	22.0	110	—
90CD12X25	90GCD12X25	90VCD12X25	90VACD12X25	90CDL12X25	12X25	12.0	15.7	25.0	120	—

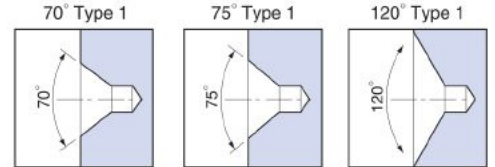
※左刃90°・インチサイズ:受注生産 ※Left90° and inch size : made to order



# 岡部規格 1形 70°・75°・120° (Material SKH51:HSS)



θ=70°・75°・120°



コーティング種類  
Coated Type  
G: TiN

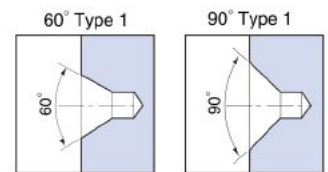
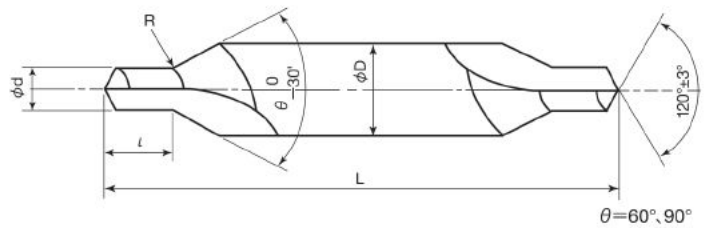
単位:mm Unit:mm

商品コード Item Code				呼び Nominal size	刃径 (d) Drill Dia.	刃長 (L) Drill Length	胴径 (D) Shank Dia.	全長 (L) Overall Length
70° ※	75° ※	120°	Gコーティング120° G Coated 120°					
70CD0.3	75CD0.3	120CD0.3	120GCD0.3	0.3	0.3	0.4	3.0	31
70CD0.4	75CD0.4	120CD0.4	120GCD0.4	0.4	0.4	0.5	3.0	31
70CD0.5	75CD0.5	120CD0.5	120GCD0.5	0.5	0.5	0.6	3.0	31
70CD0.6	75CD0.6	120CD0.6	120GCD0.6	0.6	0.6	0.7	3.5	36
70CD0.7	75CD0.7	120CD0.7	120GCD0.7	0.7	0.7	0.9	3.5	36
70CD0.8	75CD0.8	120CD0.8	120GCD0.8	0.8	0.8	1.0	4.0	36
70CD0.9	75CD0.9	120CD0.9	120GCD0.9	0.9	0.9	1.1	4.0	36
70CD1.0	75CD1.0	120CD1.0	120GCD1.0	1.0	1.0	1.3	4.0	36
70CD1.2	75CD1.2	120CD1.2	120GCD1.2	1.2	1.2	1.6	5.0	42
70CD1.5	75CD1.5	120CD1.5	120GCD1.5	1.5	1.5	2.0	5.0	42
70CD2.0	75CD2.0	120CD2.0	120GCD2.0	2.0	2.0	2.6	6.0	47
70CD2.5	75CD2.5	120CD2.5	120GCD2.5	2.5	2.5	3.2	7.7	57
70CD3.0	75CD3.0	120CD3.0	120GCD3.0	3.0	3.0	3.9	7.7	57
70CD3X8	75CD3X8	120CD3X8	120GCD3X8	3X8	3.0	3.9	8.0	53
70CD4X10	75CD4X10	120CD4X10	120GCD4X10	4X10	4.0	5.2	10.0	69
70CD4.0	75CD4.0	120CD4.0	120GCD4.0	4.0	4.0	5.2	11.0	69
70CD5.0	75CD5.0	120CD5.0	120GCD5.0	5.0	5.0	6.6	11.0	69
70CD5X12	75CD5X12	120CD5X12	120GCD5X12	5X12	5.0	6.6	12.0	69
70CD6X16	75CD6X16	120CD6X16	120GCD6X16	6X16	6.0	7.8	16.0	90
70CD6.0	75CD6.0	120CD6.0	120GCD6.0	6.0	6.0	7.8	18.0	95
70CD8.0	75CD8.0	120CD8.0	120GCD8.0	8.0	8.0	10.4	18.0	100
70CD10.0	75CD10.0	120CD10.0	120GCD10.0	10.0	10.0	13.1	18.0	100
70CD12X22	75CD12X22	120CD12X22	120GCD12X22	12X22	12.0	15.7	22.0	110
70CD12X25	75CD12X25	120CD12X25	120GCD12X25	12X25	12.0	15.7	25.0	120

※θ=70°・75°:受注生産 ※θ=70° and 75°: made to order



# 岡部準規格 1形 60°・90° (Material SKH51:HSS)



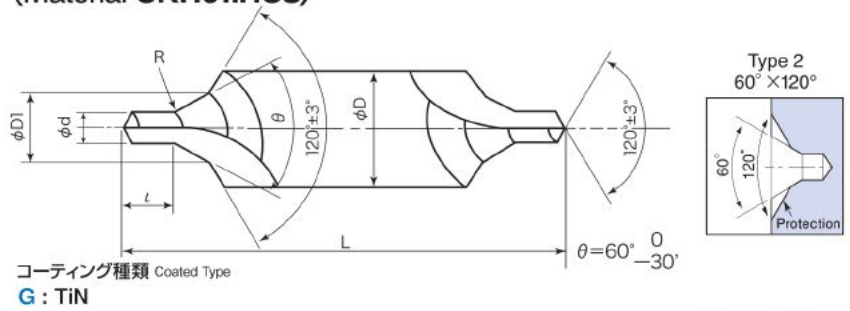
コーティング種類  
Coated Type  
G : TiN

単位:mm Unit:mm

商品コード Item Code				呼び Nominal size	刃径 (d) Drill Dia.	刃長 (l) Drill Length	胴径 (D) Shank Dia.	全長 (L) Overall Length
60°	Gコーティング60° G Coated60°	90°	Gコーティング90° G Coated90°					
CD1.1	GCD1.1	90CD1.1	90GCD1.1	1.1	1.1	1.5	4.0	36
CD1.3	GCD1.3	90CD1.3	90GCD1.3	1.3	1.3	1.7	5.0	42
CD1.4	GCD1.4	90CD1.4	90GCD1.4	1.4	1.4	1.9	5.0	42
CD1.6	GCD1.6	90CD1.6	90GCD1.6	1.6	1.6	2.1	5.0	42
CD1.7	GCD1.7	90CD1.7	90GCD1.7	1.7	1.7	2.2	6.0	47
CD1.8	GCD1.8	90CD1.8	90GCD1.8	1.8	1.8	2.3	6.0	47
CD1.9	GCD1.9	90CD1.9	90GCD1.9	1.9	1.9	2.5	6.0	47
CD2.1	GCD2.1	90CD2.1	90GCD2.1	2.1	2.1	2.7	6.0	47
CD2.2	GCD2.2	90CD2.2	90GCD2.2	2.2	2.2	2.8	6.0	47
CD2.3×8	GCD2.3×8	90CD2.3×8	90GCD2.3×8	2.3×8	2.3	2.9	8.0	53
CD2.4×8	GCD2.4×8	90CD2.4×8	90GCD2.4×8	2.4×8	2.4	3.0	8.0	53
CD2.6×8	GCD2.6×8	90CD2.6×8	90GCD2.6×8	2.6×8	2.6	3.2	8.0	53
CD2.7×8	GCD2.7×8	90CD2.7×8	90GCD2.7×8	2.7×8	2.7	3.4	8.0	53
CD2.8×8	GCD2.8×8	90CD2.8×8	90GCD2.8×8	2.8×8	2.8	3.6	8.0	53
CD2.9×8	GCD2.9×8	90CD2.9×8	90GCD2.9×8	2.9×8	2.9	3.7	8.0	53
CD3.1×8	GCD3.1×8	90CD3.1×8	90GCD3.1×8	3.1×8	3.1	4.1	8.0	53
CD3.2×8	GCD3.2×8	90CD3.2×8	90GCD3.2×8	3.2×8	3.2	4.2	8.0	53
CD3.3×8	GCD3.3×8	90CD3.3×8	90GCD3.3×8	3.3×8	3.3	4.3	8.0	53
CD3.4×8	GCD3.4×8	90CD3.4×8	90GCD3.4×8	3.4×8	3.4	4.5	8.0	53
CD3.5×10	GCD3.5×10	90CD3.5×10	90GCD3.5×10	3.5×10	3.5	4.6	10.0	55
CD3.6×10	GCD3.6×10	90CD3.6×10	90GCD3.6×10	3.6×10	3.6	4.7	10.0	55
CD3.7×10	GCD3.7×10	90CD3.7×10	90GCD3.7×10	3.7×10	3.7	4.8	10.0	55
CD3.8×10	GCD3.8×10	90CD3.8×10	90GCD3.8×10	3.8×10	3.8	4.9	10.0	55
CD3.9×10	GCD3.9×10	90CD3.9×10	90GCD3.9×10	3.9×10	3.9	5.1	10.0	55
CD4×10×55	GCD4×10×55	90CD4×10×55	90GCD4×10×55	4×10×55	4.0	5.2	10.0	55
CD4.1×10	GCD4.1×10	90CD4.1×10	90GCD4.1×10	4.1×10	4.1	5.4	10.0	55
CD4.2×10	GCD4.2×10	90CD4.2×10	90GCD4.2×10	4.2×10	4.2	5.5	10.0	55
CD4.3×10	GCD4.3×10	90CD4.3×10	90GCD4.3×10	4.3×10	4.3	5.6	10.0	55
CD4.4×10	GCD4.4×10	90CD4.4×10	90GCD4.4×10	4.4×10	4.4	5.8	10.0	55
CD4.5×10	GCD4.5×10	90CD4.5×10	90GCD4.5×10	4.5×10	4.5	5.9	10.0	55
CD4.6×10	GCD4.6×10	90CD4.6×10	90GCD4.6×10	4.6×10	4.6	6.0	10.0	55
CD4.7×10	GCD4.7×10	90CD4.7×10	90GCD4.7×10	4.7×10	4.7	6.1	10.0	55
CD4.8×10	GCD4.8×10	90CD4.8×10	90GCD4.8×10	4.8×10	4.8	6.2	10.0	55
CD4.9×10	GCD4.9×10	90CD4.9×10	90GCD4.9×10	4.9×10	4.9	6.4	10.0	55
CD5.0×10	GCD5.0×10	90CD5.0×10	90GCD5.0×10	5.0×10	5.0	6.6	10.0	55



## 岡部規格 2形 60°×120° (Material SKH51:HSS)

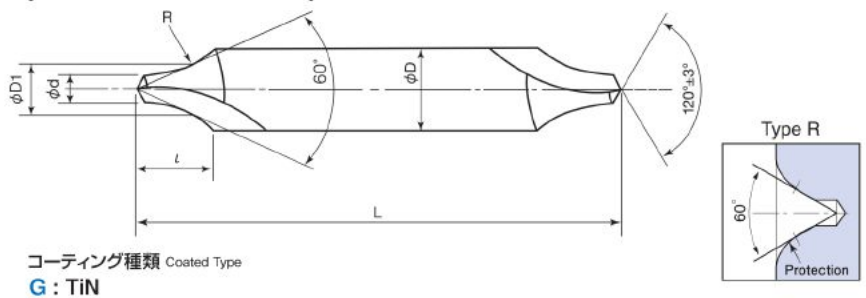


単位:mm Unit:mm

商品コード Item Code		呼び Nominal size	刃径 (d) Drill Dia.	刃長 (l) Drill Length	胴径 (D) Shank Dia.	60° 最大径 (D1) ○○○○○	全長 (L) Overall Length
60°×120°	Gコーティング60°×120° G Coated60°×120°						
O2CD1.0	GO2CD1.0	1.0	1.0	1.3	5.0	2.5	42
O2CD1.5	GO2CD1.5	1.5	1.5	2.0	6.0	3.5	47
O2CD2.0	GO2CD2.0	2.0	2.0	2.6	8.0	4.5	53
O2CD2.5	GO2CD2.5	2.5	2.5	3.2	9.0	5.3	58
O2CD3.0	GO2CD3.0	3.0	3.0	3.9	10.0	6.0	63
O2CD4.0	GO2CD4.0	4.0	4.0	5.2	13.0	8.0	73
O2CD5.0	GO2CD5.0	5.0	5.0	6.6	16.0	10.0	84
O2CD6.0	GO2CD6.0	6.0	6.0	7.8	18.0	12.0	95



## 岡部規格 R形 (Material SKH51:HSS)

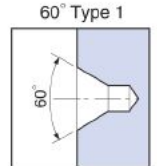
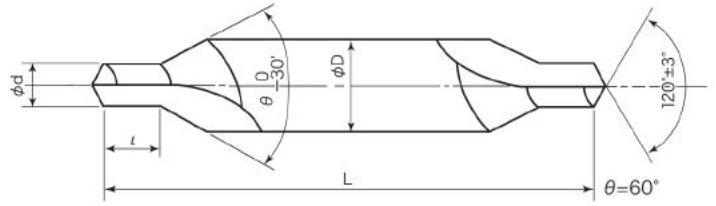


単位:mm Unit:mm

商品コード Item Code		呼び Nominal size	刃径 (d) Drill Dia.	刃長 (l) Drill Length	胴径 (D) Shank Dia.	全長 (L) Overall Length	R	60° 交点径 (D1) ○○○○○
R	GコーティングR G CoatedR							
RCD0.7	GRCD0.7	0.7	0.7	3.0	3.5	36	3.5	1.7
RCD1.0	GRCD1.0	1.0	1.0	4.0	4.0	36	4.0	2.1
RCD1.2	GRCD1.2	1.2	1.2	4.3	5.0	42	5.0	2.5
RCD1.5	GRCD1.5	1.5	1.5	5.0	5.0	42	5.0	2.8
RCD2.0	GRCD2.0	2.0	2.0	6.0	6.0	47	6.0	3.6
RCD2.5	GRCD2.5	2.5	2.5	7.5	8.0	53	8.0	4.6
RCD3.0	GRCD3.0	3.0	3.0	9.5	10.0	58	10.0	5.7
RCD4.0	GRCD4.0	4.0	4.0	11.0	12.0	69	12.0	7.2
RCD5.0	GRCD5.0	5.0	5.0	13.0	14.0	82	14.0	8.8
RCD6.0	GRCD6.0	6.0	6.0	16.0	18.0	95	18.0	10.8



# 岡部規格 JIS 1形 60°・左刃60° (Material SKH51:HSS)



コーティング種類 Coated Type  
G : TiN / V : TiCN系 / VA : TiAlN系

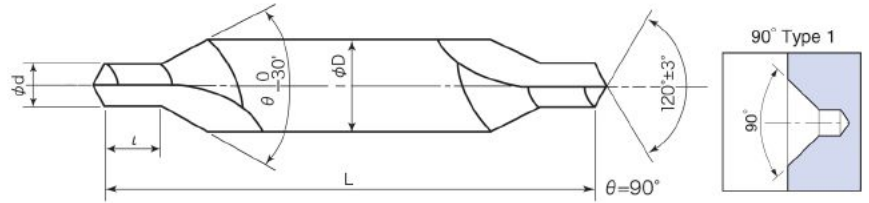
単位:mm Unit:mm

商品コード Item Code					呼び Nominal size	刃径 (d) Drill Dia.	刃長 (l) Drill Length	胴径 (D) Shank Dia.	全長 (L) Overall Length
60°	Gコーティング60° G Coated60°	Vコーティング60° V Coated60°	VAコーティング60° VA Coated60°	左刃60° Left60°					
J1CD0.7	GJ1CD0.7	VJ1CD0.7	VAJ1CD0.7	J1CDL0.7	0.7	0.7	0.7	3.5	35
J1CD1.0	GJ1CD1.0	VJ1CD1.0	VAJ1CD1.0	J1CDL1.0	1.0	1.0	1.1	4.0	35
J1CD1.5	GJ1CD1.5	VJ1CD1.5	VAJ1CD1.5	J1CDL1.5	1.5	1.5	1.6	5.0	40
J1CD2.0	GJ1CD2.0	VJ1CD2.0	VAJ1CD2.0	J1CDL2.0	2.0	2.0	2.1	6.0	45
J1CD2.5	GJ1CD2.5	VJ1CD2.5	VAJ1CD2.5	J1CDL2.5	2.5	2.5	2.6	8.0	50
J1CD3.0	GJ1CD3.0	VJ1CD3.0	VAJ1CD3.0	J1CDL3.0	3.0	3.0	3.2	10.0	55
J1CD4.0	GJ1CD4.0	VJ1CD4.0	VAJ1CD4.0	J1CDL4.0	4.0	4.0	4.2	12.0	66
J1CD5.0	GJ1CD5.0	VJ1CD5.0	VAJ1CD5.0	J1CDL5.0	5.0	5.0	5.3	14.0	78
J1CD6.0	GJ1CD6.0	VJ1CD6.0	VAJ1CD6.0	J1CDL6.0	6.0	6.0	6.3	18.0	90

※左刃60°:受注生産 ※刃長寸法は岡部規格と同じです。 ※Left60°: made to order ※l: dimensions are in accordance with original OKABE standards.



# 岡部規格 JIS 1形 90°・左刃90° (Material SKH51:HSS)



コーティング種類 Coated Type  
**G** : TiN / **V** : TiCN系 / **VA** : TiAlN系

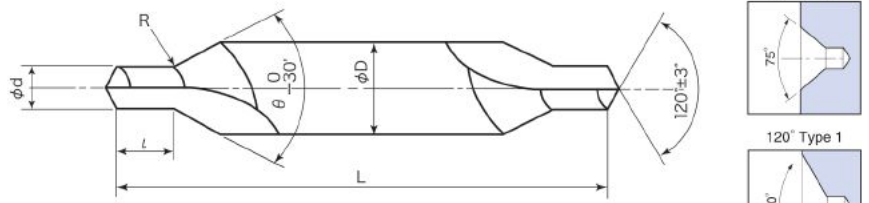
単位:mm Unit:mm

商品コード Item Code					呼び Nominal size	刃径 (d) Drill Dia.	刃長 (l) Drill Length	胴径 (D) Shank Dia.	全長 (L) Overall Length
90°	Gコーティング90° G Coated60°	Vコーティング90° V Coated60°	VAコーティング90° VA Coated60°	左刃90° ※ Left90°					
90J1CD0.7	90GJ1CD0.7	90VJ1CD0.7	90VAJ1CD0.7	90J1CDL0.7	0.7	0.7	0.7	3.5	35
90J1CD1.0	90GJ1CD1.0	90VJ1CD1.0	90VAJ1CD1.0	90J1CDL1.0	1.0	1.0	1.1	4.0	35
90J1CD1.5	90GJ1CD1.5	90VJ1CD1.5	90VAJ1CD1.5	90J1CDL1.5	1.5	1.5	1.6	5.0	40
90J1CD2.0	90GJ1CD2.0	90VJ1CD2.0	90VAJ1CD2.0	90J1CDL2.0	2.0	2.0	2.1	6.0	45
90J1CD2.5	90GJ1CD2.5	90VJ1CD2.5	90VAJ1CD2.5	90J1CDL2.5	2.5	2.5	2.6	8.0	50
90J1CD3.0	90GJ1CD3.0	90VJ1CD3.0	90VAJ1CD3.0	90J1CDL3.0	3.0	3.0	3.2	10.0	55
90J1CD4.0	90GJ1CD4.0	90VJ1CD4.0	90VAJ1CD4.0	90J1CDL4.0	4.0	4.0	4.2	12.0	66
90J1CD5.0	90GJ1CD5.0	90VJ1CD5.0	90VAJ1CD5.0	90J1CDL5.0	5.0	5.0	5.3	14.0	78
90J1CD6.0	90GJ1CD6.0	90VJ1CD6.0	90VAJ1CD6.0	90J1CDL6.0	6.0	6.0	6.3	18.0	90

※左刃90°:受注生産 ※刃長寸法は岡部規格と同じです。 ※Left90°: made to order ※L: dimensions are in accordance with original OKABE standards.



# 岡部規格 JIS 1形 70°・75°・120° (Material SKH51:HSS)



コーティング種類 Coated Type  
**G** : TiN

θ=70°・75°・120°

単位:mm Unit:mm

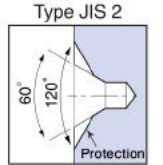
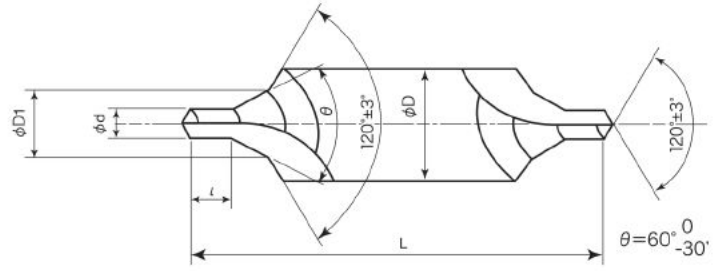
商品コード Item Code				呼び Nominal size	刃径 (d) Drill Dia.	刃長 (l) Drill Length	胴径 (D) Shank Dia.	全長 (L) Overall Length
70° ※	75° ※	120°	Gコーティング120° G Coated120°					
70J1CD0.7	75J1CD0.7	120J1CD0.7	120GJ1CD0.7	0.7	0.7	0.7	3.5	35
70J1CD1.0	75J1CD1.0	120J1CD1.0	120GJ1CD1.0	1.0	1.0	1.1	4.0	35
70J1CD1.5	75J1CD1.5	120J1CD1.5	120GJ1CD1.5	1.5	1.5	1.6	5.0	40
70J1CD2.0	75J1CD2.0	120J1CD2.0	120GJ1CD2.0	2.0	2.0	2.1	6.0	45
70J1CD2.5	75J1CD2.5	120J1CD2.5	120GJ1CD2.5	2.5	2.5	2.6	8.0	50
70J1CD3.0	75J1CD3.0	120J1CD3.0	120GJ1CD3.0	3.0	3.0	3.2	10.0	55
70J1CD4.0	75J1CD4.0	120J1CD4.0	120GJ1CD4.0	4.0	4.0	4.2	12.0	66
70J1CD5.0	75J1CD5.0	120J1CD5.0	120GJ1CD5.0	5.0	5.0	5.3	14.0	78
70J1CD6.0	75J1CD6.0	120J1CD6.0	120GJ1CD6.0	6.0	6.0	6.3	18.0	90

※θ=70°・75°:受注生産 ※刃長寸法と120°は岡部規格と同じです。 ※θ=70° and 75°: made to order ※L and 120°: dimensions are in accordance with original OKABE standards.



# 岡部規格 JIS 2形 60°×120°

(Material SKH51:HSS)



コーティング種類 Coated Type  
G : TiN

単位:mm Unit:mm

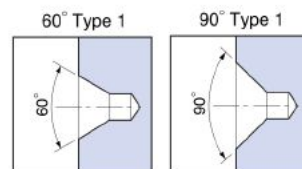
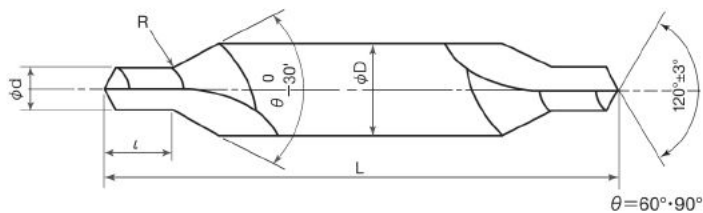
商品コード Item Code		呼び Nominal size	刃径 (d) Drill Dia.	刃長 (l) Drill Length	胴径 (D) Shank Dia.	60° 最大径 (D1) ○○○○○	全長 (L) Overall Length
60°×120°	Gコーティング60°×120° G Coated 60°×120°						
J2CD1.0	GJ2CD1.0	1.0	1.0	1.1	6.0	2.5	45
J2CD1.5	GJ2CD1.5	1.5	1.5	1.6	8.0	4.0	50
J2CD2.0	GJ2CD2.0	2.0	2.0	2.1	10.0	5.0	55
J2CD2.5	GJ2CD2.5	2.5	2.5	2.6	12.0	6.5	60
J2CD3.0	GJ2CD3.0	3.0	3.0	3.2	14.0	8.0	65
J2CD4.0	GJ2CD4.0	4.0	4.0	4.2	18.0	10.0	76
J2CD5.0	GJ2CD5.0	5.0	5.0	5.3	22.0	12.0	88
J2CD6.0	GJ2CD6.0	6.0	6.0	6.3	25.0	15.0	100

※刃長寸法は岡部規格と同じです。 ※l: dimensions are in accordance with original OKABE standards.

# Cobalt Center Drills OKABE Standard Type1



# コバルトセンタードリル 岡部規格 1形 60°・90° (Material SKH55:HSS-Co)



コーティング種類 Coated Type  
G : TiN

単位:mm Unit:mm

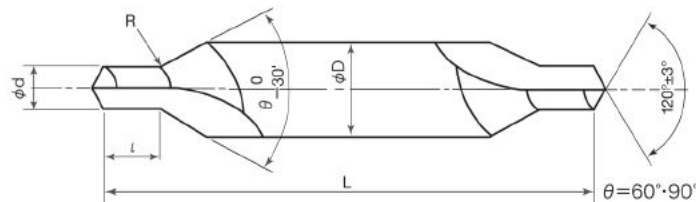
商品コード Item Code				呼び Nominal size	刃径 (d) Drill Dia.	刃長 (l) Drill Length	胴径 (D) Shank Dia.	全長 (L) Overall Length
60°	Gコーティング60° G Coated60°	90°	Gコーティング90° G Coated90°					
CD0.3H55	GCD0.3H55	90CD0.3H55	90GCD0.3H55	0.3	0.3	0.4	3.0	31
CD0.4H55	GCD0.4H55	90CD0.4H55	90GCD0.4H55	0.4	0.4	0.5	3.0	31
CD0.5H55	GCD0.5H55	90CD0.5H55	90GCD0.5H55	0.5	0.5	0.6	3.0	31
CD0.6H55	GCD0.6H55	90CD0.6H55	90GCD0.6H55	0.6	0.6	0.7	3.5	36
CD0.7H55	GCD0.7H55	90CD0.7H55	90GCD0.7H55	0.7	0.7	0.9	3.5	36
CD0.8H55	GCD0.8H55	90CD0.8H55	90GCD0.8H55	0.8	0.8	1.0	4.0	36
CD0.9H55	GCD0.9H55	90CD0.9H55	90GCD0.9H55	0.9	0.9	1.1	4.0	36
CD1.0H55	GCD1.0H55	90CD1.0H55	90GCD1.0H55	1.0	1.0	1.3	4.0	36
CD1.2H55	GCD1.2H55	90CD1.2H55	90GCD1.2H55	1.2	1.2	1.6	5.0	42
CD1.5H55	GCD1.5H55	90CD1.5H55	90GCD1.5H55	1.5	1.5	2.0	5.0	42
CD2X5H55	GCD2X5H55	90CD2X5H55	90GCD2X5H55	2X5	2.0	2.6	5.0	42
CD2.0H55	GCD2.0H55	90CD2.0H55	90GCD2.0H55	2.0	2.0	2.6	6.0	47
CD2.5X6H55	GCD2.5X6H55	90CD2.5X6H55	90GCD2.5X6H55	2.5X6	2.5	3.2	6.0	47
CD2.5H55	GCD2.5H55	90CD2.5H55	90GCD2.5H55	2.5	2.5	3.2	7.7	57
CD3.0H55	GCD3.0H55	90CD3.0H55	90GCD3.0H55	3.0	3.0	3.9	7.7	57
CD3X8H55	GCD3X8H55	90CD3X8H55	90GCD3X8H55	3X8	3.0	3.9	8.0	53
CD3.2H55	GCD3.2H55	90CD3.2H55	90GCD3.2H55	3.2	3.2	4.2	7.7	57
CD4X10H55	GCD4X10H55	90CD4X10H55	90GCD4X10H55	4X10	4.0	5.2	10.0	69
CD4.0H55	GCD4.0H55	90CD4.0H55	90GCD4.0H55	4.0	4.0	5.2	11.0	69
CD5.0H55	GCD5.0H55	90CD5.0H55	90GCD5.0H55	5.0	5.0	6.6	11.0	69
CD5X12H55	GCD5X12H55	90CD5X12H55	90GCD5X12H55	5X12	5.0	6.6	12.0	69
CD6X16H55	GCD6X16H55	90CD6X16H55	90GCD6X16H55	6X16	6.0	7.8	16.0	90
CD6.0H55	GCD6.0H55	90CD6.0H55	90GCD6.0H55	6.0	6.0	7.8	18.0	95
CD8.0H55	GCD8.0H55	90CD8.0H55	90GCD8.0H55	8.0	8.0	10.4	18.0	100
CD10.0H55	GCD10.0H55	90CD10.0H55	90GCD10.0H55	10.0	10.0	13.1	18.0	100
CD12X22H55	GCD12X22H55	90CD12X22H55	90GCD12X22H55	12X22	12.0	15.7	22.0	110
CD12X25H55	GCD12X25H55	90CD12X25H55	90GCD12X25H55	12X25	12.0	15.7	25.0	120

# Cobalt Center Drills OKABE Standard Type JIS 1



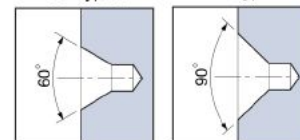
# コバルトセンタードリル 岡部規格 JIS 1形 60°・90°

(Material SKH55:HSS-Co)



60° Type 1

90° Type 1



コーティング種類 Coated Type  
G : TiN

単位:mm Unit:mm

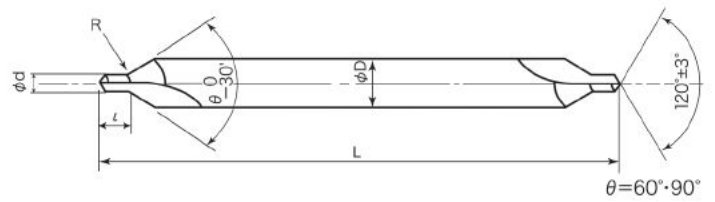
商品コード Item Code				呼び Nominal size	刃径 (d) Drill Dia.	刃長 (l) Drill Length	胴径 (D) Shank Dia.	全長 (L) Overall Length
60°	Gコーティング60° G Coated60°	90°	Gコーティング90° G Coated90°					
J1CD0.7H55	GJ1CD0.7H55	90J1CD0.7H55	90GJ1CD0.7H55	0.7	0.7	0.7	3.5	35.0
J1CD1.0H55	GJ1CD1.0H55	90J1CD1.0H55	90GJ1CD1.0H55	1.0	1.0	1.1	4.0	35.0
J1CD1.5H55	GJ1CD1.5H55	90J1CD1.5H55	90GJ1CD1.5H55	1.5	1.5	1.6	5.0	40.0
J1CD2.0H55	GJ1CD2.0H55	90J1CD2.0H55	90GJ1CD2.0H55	2.0	2.0	2.1	6.0	45.0
J1CD2.5H55	GJ1CD2.5H55	90J1CD2.5H55	90GJ1CD2.5H55	2.5	2.5	2.6	8.0	50.0
J1CD3.0H55	GJ1CD3.0H55	90J1CD3.0H55	90GJ1CD3.0H55	3.0	3.0	3.2	10.0	55.0
J1CD4.0H55	GJ1CD4.0H55	90J1CD4.0H55	90GJ1CD4.0H55	4.0	4.0	4.2	12.0	66.0
J1CD5.0H55	GJ1CD5.0H55	90J1CD5.0H55	90GJ1CD5.0H55	5.0	5.0	5.3	14.0	78.0
J1CD6.0H55	GJ1CD6.0H55	90J1CD6.0H55	90GJ1CD6.0H55	6.0	6.0	6.3	18.0	90.0

※刃長寸法は岡部規格と同じです。 ※L: dimensions are in accordance with original OKABE standards.

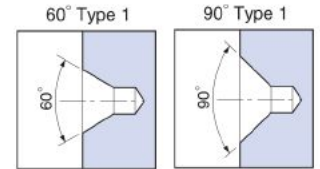
# OKABE Standard Long Center Drills



## 岡部規格 ロングセンタードリル 60°・90° (Material SKH51:HSS)

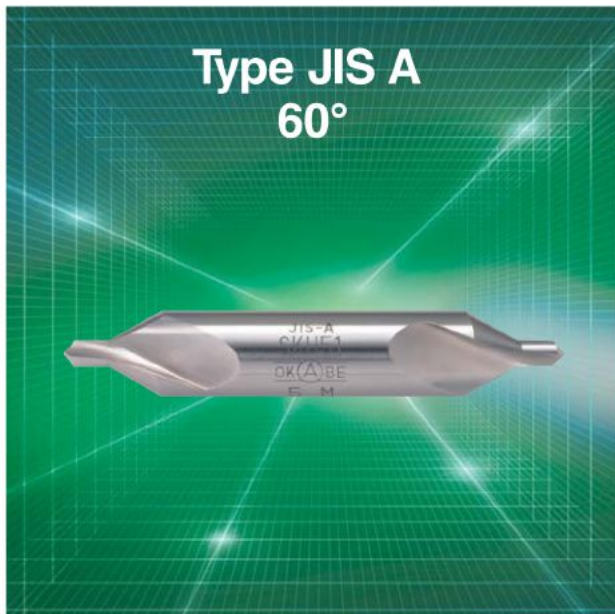


コーティング種類 Coated Type  
G : TiN

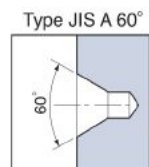
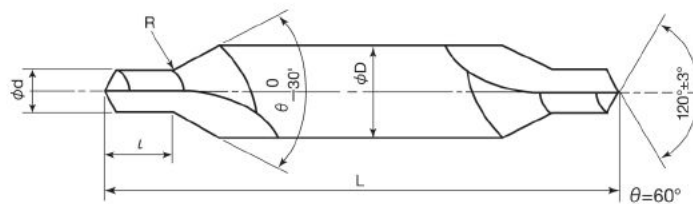


単位:mm Unit:mm

商品コード Item Code				呼び Nominal size	刃径 (d) Drill Dia.	刃長 (l) Drill Length	胴径 (D) Shank Dia.	全長 (L) Overall Length
60°	Gコーティング60° G Coated60°	90°	Gコーティング90° G Coated90°					
LCD1X4X100	GLCD1X4X100	90LCD1X4X100	90GLCD1X4X100	1×4×100	1.0	1.2	4	100
LCD1X4X150	GLCD1X4X150	90LCD1X4X150	90GLCD1X4X150	1×4×150	1.0	1.2	4	150
LCD1.5X5X100	GLCD1.5X5X100	90LCD1.5X5X100	90GLCD1.5X5X100	1.5×5×100	1.5	1.9	5	100
LCD1.5X5X150	GLCD1.5X5X150	90LCD1.5X5X150	90GLCD1.5X5X150	1.5×5×150	1.5	1.9	5	150
LCD2X6X100	GLCD2X6X100	90LCD2X6X100	90GLCD2X6X100	2×6×100	2.0	2.5	6	100
LCD2X6X150	GLCD2X6X150	90LCD2X6X150	90GLCD2X6X150	2×6×150	2.0	2.5	6	150
LCD2X6X200	GLCD2X6X200	90LCD2X6X200	90GLCD2X6X200	2×6×200	2.0	2.5	6	200
LCD2.5X7.7X100	GLCD2.5X7.7X100	90LCD2.5X7.7X100	90GLCD2.5X7.7X100	2.5×7.7×100	2.5	3.1	7.7	100
LCD2.5X7.7X150	GLCD2.5X7.7X150	90LCD2.5X7.7X150	90GLCD2.5X7.7X150	2.5×7.7×150	2.5	3.1	7.7	150
LCD2.5X8X100	GLCD2.5X8X100	90LCD2.5X8X100	90GLCD2.5X8X100	2.5×8×100	2.5	3.1	8	100
LCD2.5X8X150	GLCD2.5X8X150	90LCD2.5X8X150	90GLCD2.5X8X150	2.5×8×150	2.5	3.1	8	150
LCD2.5X8X200	GLCD2.5X8X200	90LCD2.5X8X200	90GLCD2.5X8X200	2.5×8×200	2.5	3.1	8	200
LCD3X7.7X100	GLCD3X7.7X100	90LCD3X7.7X100	90GLCD3X7.7X100	3×7.7×100	3.0	3.7	7.7	100
LCD3X7.7X150	GLCD3X7.7X150	90LCD3X7.7X150	90GLCD3X7.7X150	3×7.7×150	3.0	3.7	7.7	150
LCD3X8X100	GLCD3X8X100	90LCD3X8X100	90GLCD3X8X100	3×8×100	3.0	3.7	8	100
LCD3X8X150	GLCD3X8X150	90LCD3X8X150	90GLCD3X8X150	3×8×150	3.0	3.7	8	150
LCD3X8X200	GLCD3X8X200	90LCD3X8X200	90GLCD3X8X200	3×8×200	3.0	3.7	8	200
LCD3X10X100	GLCD3X10X100	90LCD3X10X100	90GLCD3X10X100	3×10×100	3.0	3.7	10	100
LCD3X10X150	GLCD3X10X150	90LCD3X10X150	90GLCD3X10X150	3×10×150	3.0	3.7	10	150
LCD3X10X200	GLCD3X10X200	90LCD3X10X200	90GLCD3X10X200	3×10×200	3.0	3.7	10	200
LCD3X10X250	GLCD3X10X250	90LCD3X10X250	90GLCD3X10X250	3×10×250	3.0	3.7	10	250
LCD4X10X100	GLCD4X10X100	90LCD4X10X100	90GLCD4X10X100	4×10×100	4.0	5.0	10	100
LCD4X10X150	GLCD4X10X150	90LCD4X10X150	90GLCD4X10X150	4×10×150	4.0	5.0	10	150
LCD4X10X200	GLCD4X10X200	90LCD4X10X200	90GLCD4X10X200	4×10×200	4.0	5.0	10	200
LCD4X10X250	GLCD4X10X250	90LCD4X10X250	90GLCD4X10X250	4×10×250	4.0	5.0	10	250
LCD4X11X100	GLCD4X11X100	90LCD4X11X100	90GLCD4X11X100	4×11×100	4.0	5.0	11	100
LCD4X11X150	GLCD4X11X150	90LCD4X11X150	90GLCD4X11X150	4×11×150	4.0	5.0	11	150
LCD4X12X100	GLCD4X12X100	90LCD4X12X100	90GLCD4X12X100	4×12×100	4.0	5.0	12	100
LCD4X12X150	GLCD4X12X150	90LCD4X12X150	90GLCD4X12X150	4×12×150	4.0	5.0	12	150
LCD4X12X200	GLCD4X12X200	90LCD4X12X200	90GLCD4X12X200	4×12×200	4.0	5.0	12	200
LCD4X12X250	GLCD4X12X250	90LCD4X12X250	90GLCD4X12X250	4×12×250	4.0	5.0	12	250
LCD5X11X100	GLCD5X11X100	90LCD5X11X100	90GLCD5X11X100	5×11×100	5.0	6.3	11	100
LCD5X11X150	GLCD5X11X150	90LCD5X11X150	90GLCD5X11X150	5×11×150	5.0	6.3	11	150
LCD5X12X100	GLCD5X12X100	90LCD5X12X100	90GLCD5X12X100	5×12×100	5.0	6.3	12	100
LCD5X12X150	GLCD5X12X150	90LCD5X12X150	90GLCD5X12X150	5×12×150	5.0	6.3	12	150
LCD5X12X200	GLCD5X12X200	90LCD5X12X200	90GLCD5X12X200	5×12×200	5.0	6.3	12	200
LCD5X12X250	GLCD5X12X250	90LCD5X12X250	90GLCD5X12X250	5×12×250	5.0	6.3	12	250

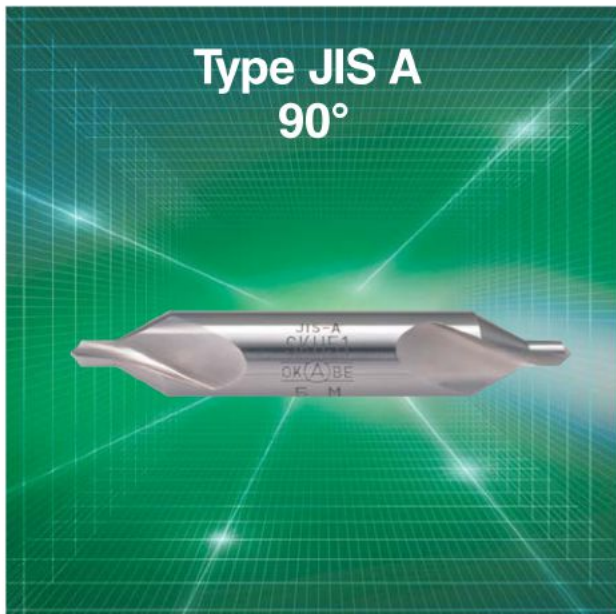


# JIS A形 60° (Material SKH51:HSS)

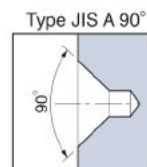
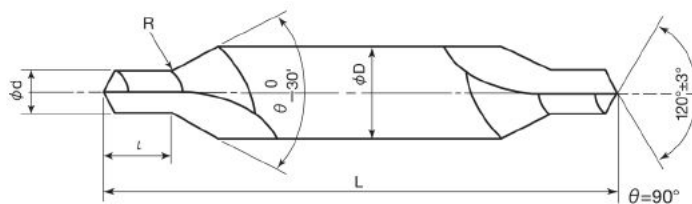


単位:mm Unit:mm

商品コード Item Code	呼び Nominal size	刃径 (d) Drill Dia.	刃長 ( $\phi$ ) Drill Length	胴径 (D) Shank Dia.	全長 (L) Overall Length
60°					
JACD0.5	0.5	0.5	0.8	3.15	31.5
JACD0.63	0.63	0.63	1.0	3.15	31.5
JACD0.8	0.8	0.8	1.2	3.15	31.5
JACD1.0	1.0	1.0	1.5	3.15	31.5
JACD1.25	1.25	1.25	1.9	3.15	31.5
JACD1.6	1.6	1.6	2.4	4.0	35.5
JACD2.0	2.0	2.0	3.0	5.0	40
JACD2.5	2.5	2.5	3.8	6.3	45
JACD3.15	3.15	3.15	4.8	8.0	50
JACD4.0	4.0	4.0	6.0	10.0	56
JACD5.0	5.0	5.0	7.5	12.5	63
JACD6.3	6.3	6.3	9.2	16.0	71
JACD8.0	8.0	8.0	11.5	20.0	80
JACD10.0	10.0	10.0	14.2	25.0	100



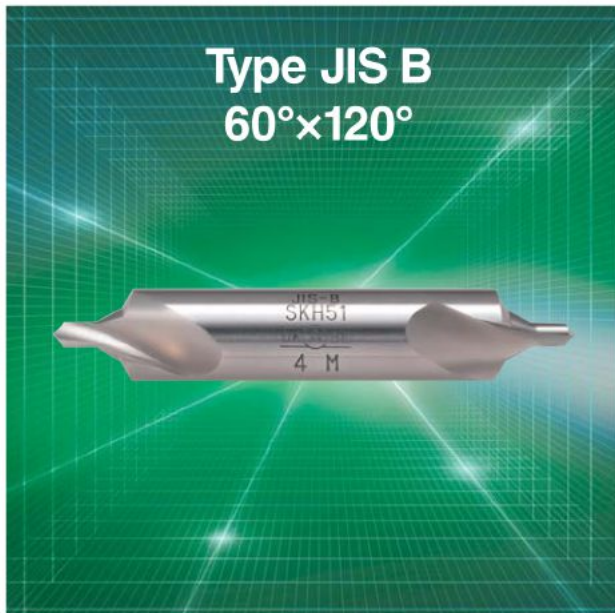
# JIS A形 90° (Material SKH51:HSS)



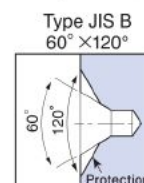
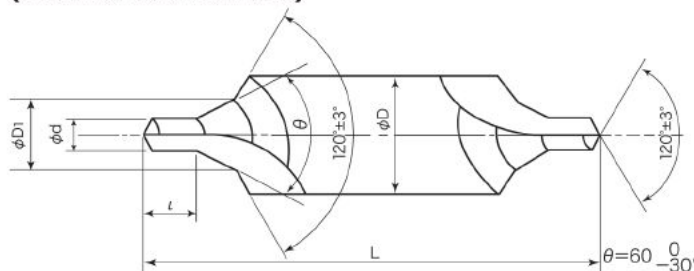
単位:mm Unit:mm

商品コード Item Code	呼び Nominal size	刃径 (d) Drill Dia.	刃長 (l) Drill Length	胴径 (D) Shank Dia.	全長 (L) Overall Length
90JACD1.0	1.0	1.0	1.1	4.0	35.5
90JACD1.25	1.25	1.25	1.4	5.0	40
90JACD1.6	1.6	1.6	1.8	6.3	45
90JACD2.0	2.0	2.0	2.2	8.0	50
90JACD2.5	2.5	2.5	2.8	10.0	56
90JACD3.15	3.15	3.15	3.6	11.2	60
90JACD4.0	4.0	4.0	4.5	12.5	63
90JACD5.0	5.0	5.0	5.6	16.0	71
90JACD6.3	6.3	6.3	7.1	20.0	80
90JACD8.0	8.0	8.0	9.0	25.0	100
90JACD10.0	10.0	10.0	11.2	31.5	125
90JACD12.5	12.5	12.5	14.0	35.5	140

※ $\theta=75^\circ$  (JIS A形 75°):受注生産 ※ $\theta=75^\circ$  (Type JIS A 75°): made to order



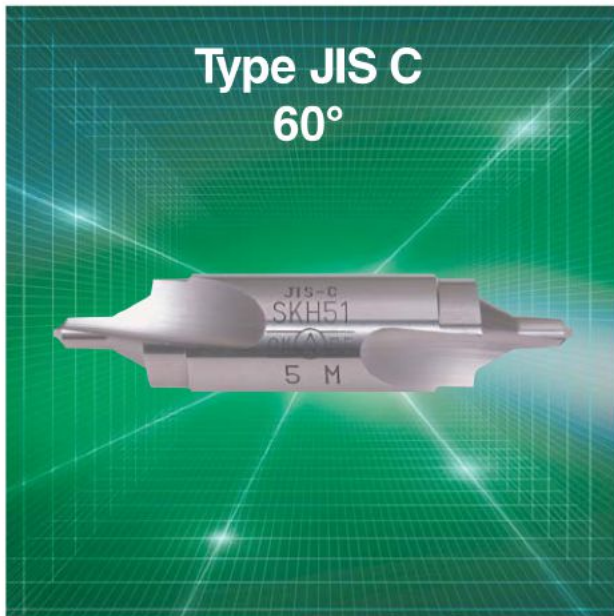
# JIS B形 60°×120° (Material SKH51:HSS)



単位:mm Unit:mm

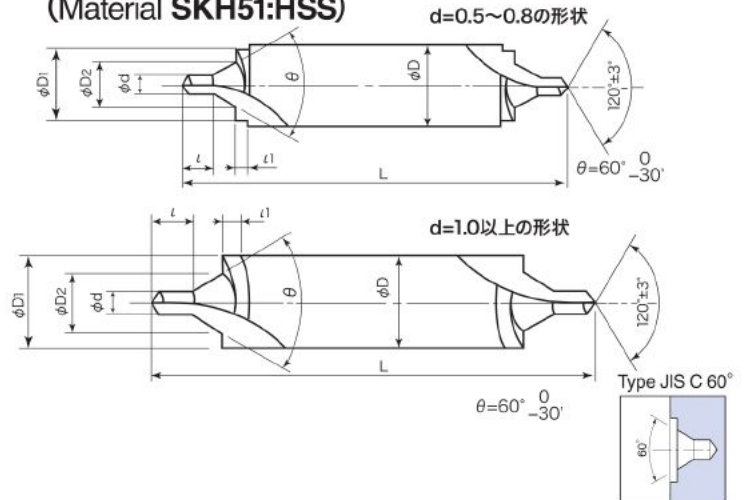
商品コード Item Code	呼び Nominal size	刃径 (d) Drill Dia.	刃長 (l) Drill Length	60° 最大径 (D1)	胴径 (D) Shank Dia.	全長 (L) Overall Length
JBCD0.5	0.5	0.5	0.8	1.06	3.15	31.5
JBCD0.63	0.63	0.63	1.0	1.32	3.15	31.5
JBCD0.8	0.8	0.8	1.2	1.7	3.15	31.5
JBCD1.0	1.0	1.0	1.5	2.12	4.0	35.5
JBCD1.25	1.25	1.25	1.9	2.65	5.0	40
JBCD1.6	1.6	1.6	2.4	3.35	6.3	45
JBCD2.0	2.0	2.0	3.0	4.25	8.0	50
JBCD2.5	2.5	2.5	3.8	5.3	10.0	56
JBCD3.15	3.15	3.15	4.8	6.7	11.2	60
JBCD4.0	4.0	4.0	6.0	8.5	14.0	67
JBCD5.0	5.0	5.0	7.5	10.6	18.0	75
JBCD6.3	6.3	6.3	9.2	13.2	20.0	80
JBCD8.0	8.0	8.0	11.5	17.0	25.0	100
JBCD10.0	10.0	10.0	14.2	21.2	31.5	125

※θ=75° (JIS B形 75°×120°)・90° (JIS B形 90°×120°):受注生産 ※θ=75° (Type JIS B 75°×120°) and 90° (Type JIS B 90°×120°): made to order



# JIS C形 60°

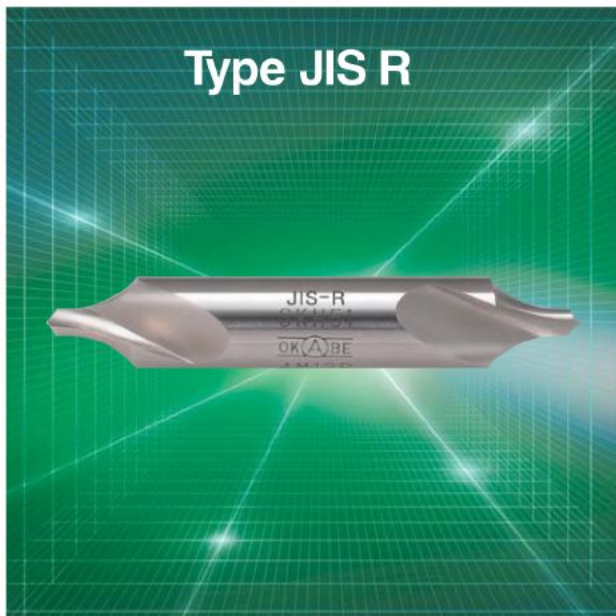
(Material SKH51:HSS)



単位:mm Unit:mm

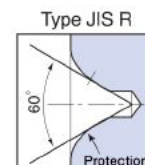
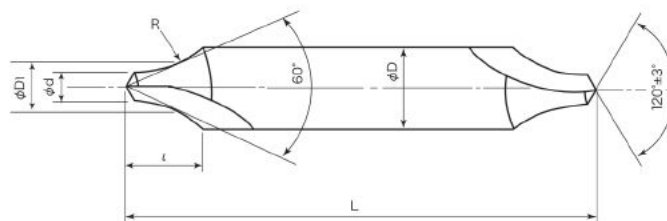
商品コード Item Code	呼び Nominal size	刃径 (d) Drill Dia.	刃長 (l) Drill Length	刃長 (l) Drill Length	D1	60° 最大径 (D2)	胴径 (D) Shank Dia.	全長 (L) Overall Length
JCCD0.5	0.5	0.5	0.8	0.6	1.6	1.06	3.15	31.5
JCCD0.63	0.63	0.63	1.0	0.8	2.0	1.32	3.15	31.5
JCCD0.8	0.8	0.8	1.2	1.0	2.5	1.7	3.15	31.5
JCCD1.0	1.0	1.0	1.5	1.2	3.15	2.12	3.15	31.5
JCCD1.25	1.25	1.25	1.9	1.5	4.0	2.65	4.0	35.5
JCCD1.6	1.6	1.6	2.4	1.8	5.0	3.35	5.0	40
JCCD2.0	2.0	2.0	3.0	2.2	6.3	4.25	6.3	45
JCCD2.5	2.5	2.5	3.8	3.0	8.0	5.3	8.0	50
JCCD3.15	3.15	3.15	4.8	3.5	10.0	6.7	10.0	56
JCCD4.0	4.0	4.0	6.0	4.2	12.5	8.5	12.5	63
JCCD5.0	5.0	5.0	7.5	5.5	16.0	10.6	16.0	71
JCCD6.3	6.3	6.3	9.2	5.5	18.0	13.2	18.0	75
JCCD8.0	8.0	8.0	11.5	5.5	22.4	17.0	22.4	90
JCCD10.0	10.0	10.0	14.2	7.0	28.0	21.2	28.0	112

※θ=75° (JIS B形 75°)・90° (JIS B形 90°):受注生産 ※θ=75° (Type JIS B 75°) and 90° (Type JIS B 90°): made to order



# JIS R形

(Material SKH51:HSS)



単位:mm Unit:mm

商品コード Item Code	呼び Nominal size	刃径 (d) Drill Dia.	刃長 (l) Drill Length	胴径 (D) Shank Dia.	全長 (L) Overall Length	R	60° 交点径 (D1)
JRCD1.0	1.0	1.0	3.0	3.15	31.5	3.15	1.8
JRCD1.25	1.25	1.25	3.35	3.15	31.5	4.0	2.3
JRCD1.6	1.6	1.6	4.25	4.0	35.5	5.0	2.9
JRCD2.0	2.0	2.0	5.3	5.0	40	6.3	3.6
JRCD2.5	2.5	2.5	6.7	6.3	45	8.0	4.6
JRCD3.15	3.15	3.15	8.5	8.0	50	10.0	5.7
JRCD4.0	4.0	4.0	10.6	10.0	56	12.5	7.2
JRCD5.0	5.0	5.0	13.2	12.5	63	16.0	9.2
JRCD6.3	6.3	6.3	17	16.0	71	20.0	11.4
JRCD8.0	8.0	8.0	21.2	20.0	80	25.0	14.4
JRCD10.0	10.0	10.0	26.5	25.0	100	31.5	18.1