

# REPORT

## 18 Series

*Discover the complete range  
of PIR movement and  
presence detectors*



**finder®**

SWITCH TO THE FUTURE

**NEW**



## New PIR Movement Detector for wall-box mounting in internal installations

### Type 18.91

Characterized by its compact size, the Type 18.91 is perfect for recessed integration with the best-known residential and commercial frame systems.

Ultra-modern design.



### Features

- Available in two colours: White and anthracite
- Rated voltage: 230 V AC (50/60)Hz
- External push-button option to force output ON
- Ambient light intervention threshold: From 5 to 500 lux
- Turn-OFF delay following last detection - 10 seconds to 20 minutes

## TYPE 18.91

PIR Movement detector for wall-box mounting in internal installations



Optimally designed to detect movement in transit areas such as corridors and stairs, as well as places with frequent movement of people such as bathrooms. The 18.91 can deliver significant energy savings, enhancing personal convenience and safety.

The special lens offers an ultra compact design, which is perfect for installation in any environment.

Available in two colours:

White - Type 18.91.8.230.0040

Anthracite - Type 18.91.8.230.0042.

The Type 18.91 movement detector is compatible with most popular residential and commercial frame systems such as Bticino®, Vimar®, Gewiss® through the use of special adaptors included in the box.

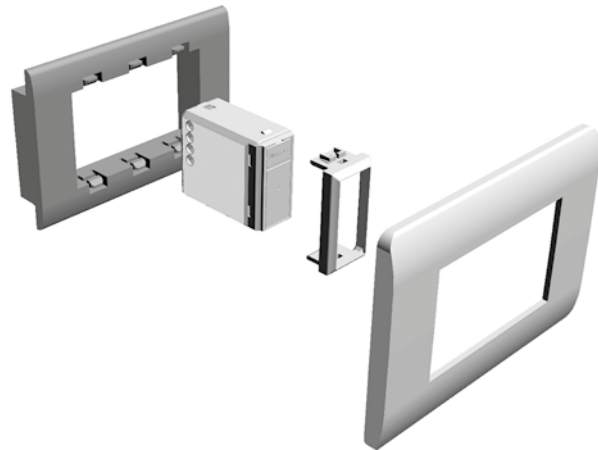
*\* Note that these trademarks and trade names are not the property of Finder SpA or any of its associated companies, and are referred to in this sheet for the purposes of technical information only.*

Turn-OFF delay regulator  
10 seconds to  
20 minutes

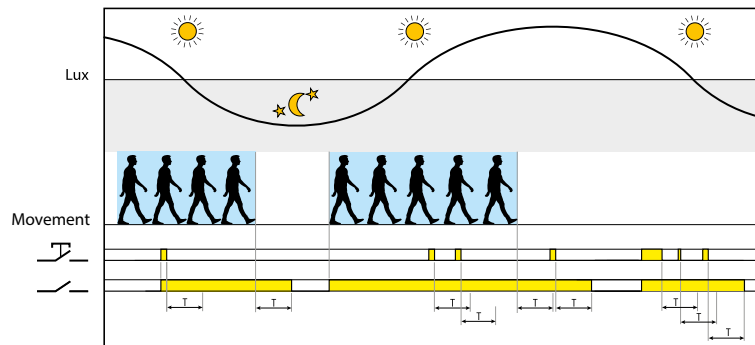


Ambient light  
intervention  
regulator

Special lens for  
"Ultra compact"  
design



The 18.91 works as a classic PIR movement detector but also features a special external push-button function. This can force the output to close, or force it to remain closed for the duration of the preset time (T). This is particularly useful and is typically used in transit areas - replacing existing control stations. It can also be used to achieve a timed solution for small areas.



### Output specification

"Zero Crossing" technology achieves a longer service life for the output and higher performance when controlling the latest LED, fluorescent and halogen lamps.

Rated voltage	V AC	230
Power max.	W	200
Power min.	W	3
Nominal lamp rating 230 V:		
incandescent/halogen	W	200
toroidal electromagnetic transformers for LV halogen	W	200
E-core electromagnetic transformers for LV halogen	W	200
electronic transformers (ballasts) for LV halogen	W	200
compact fluorescent (CFL)	W	200
230 V LED	W	200
electronic transformers	W	200

### Sensing zone

