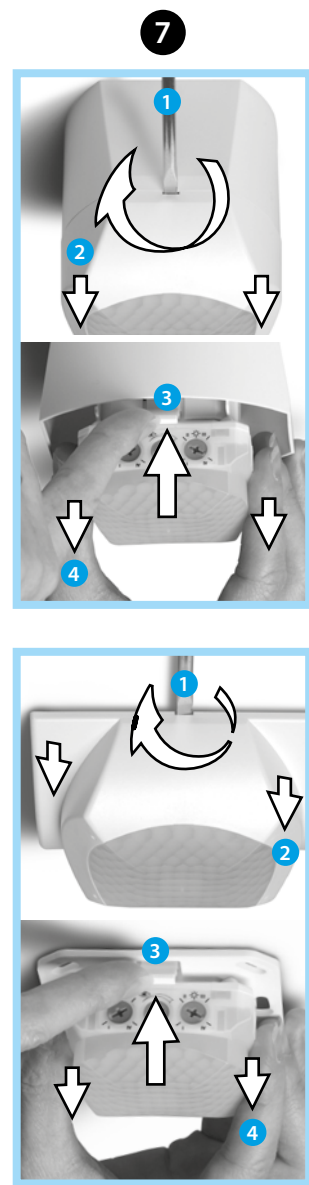
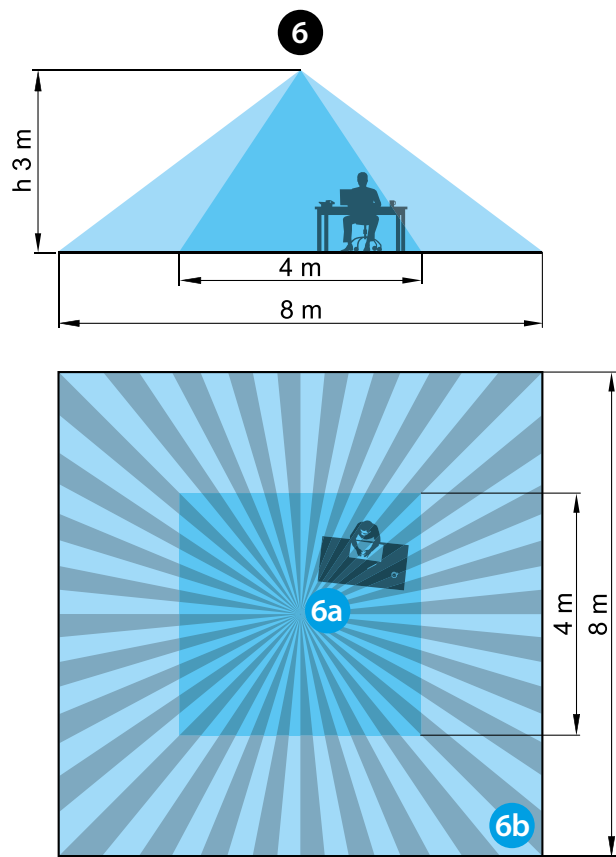
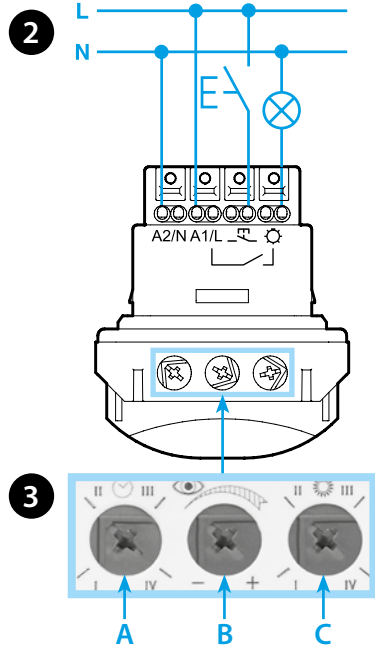
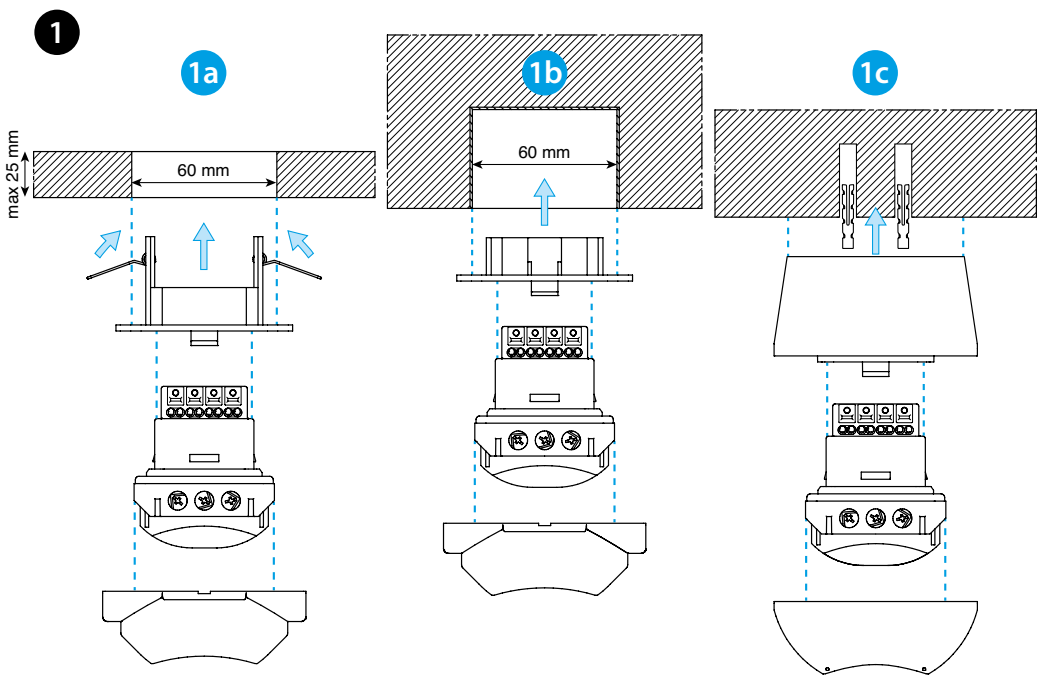
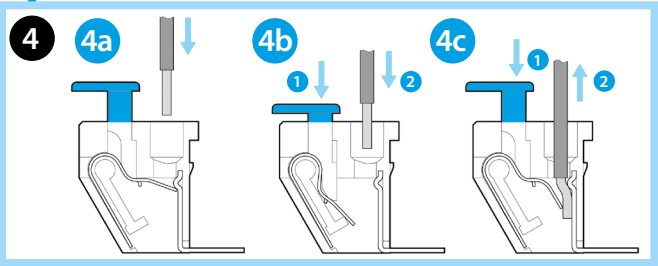
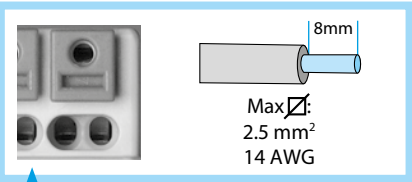




18.51-0040

EN 60669-1 / EN 60669-2-1	
	18.51.8.230.0040 U _N (110...230)V AC (50/60 Hz) U _{min} 96 V AC U _{max} 253 V AC P 1.5 VA (50 Hz) / 1 W
	1 NO (SPST-NO) 10 A 230 V AC
	AC1 2300 VA AC15 450 VA ⚡ (230 V) 1000 W ⚡ (230 V) 350 W CFL-LED (230 V) 300 W
	(-10...+50)°C
IP40	



ENGLISH

18.51-0040
PIR MOVEMENT AND PRESENCE DETECTOR

- 1 INSTALLATION**
1a Suspended ceiling mount
1b Recess mount
1c Surface mount
- 2 WIRING DIAGRAM**
- 3 SETTINGS**
A Light On time after last detection
(I=12 s; II=3 min; III=15 min; IV=35 min)
B Sensitivity: adjust sensitivity to suit the location and avoid false triggering
C Ambient light intervention threshold
(I=1 lx; II=10 lx; III=500 lx; IV= always ON (∞ lx))
- 4 TERMINAL PUSH-IN CONNECTION**
4a Connection-solid cable or with ferrules
4b Connection-stranded cable
4c Disconnection
- 5 FUNCTION CHART**
① Detection of movement
— Output Contact
A control pulse on the push-button inverts the status of the output relay, until the timing after the last movement detected has elapsed.
- 6 SENSING AREA**
2 sensing areas (h=3 m):
6a Presence (micromovements): (4x4) m
6b Movement: (8x8) m
- 7 DISMOUNTING**

NOTE
Following the initial power-on, and power-on following a power interruption, the detector makes a hardware-software initialisation for approximately 30 seconds.

