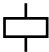




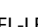


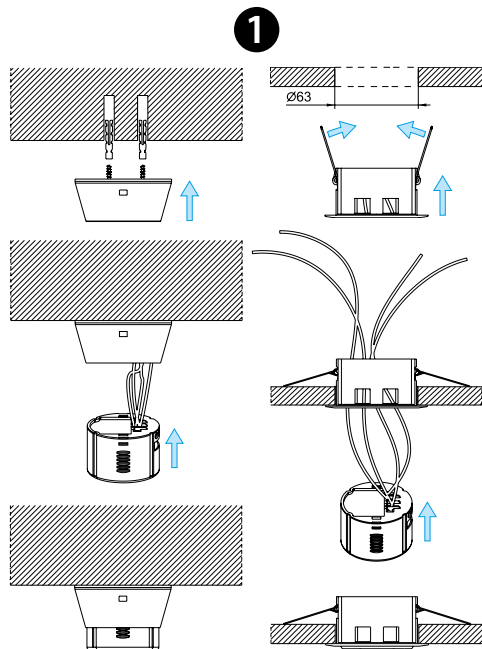


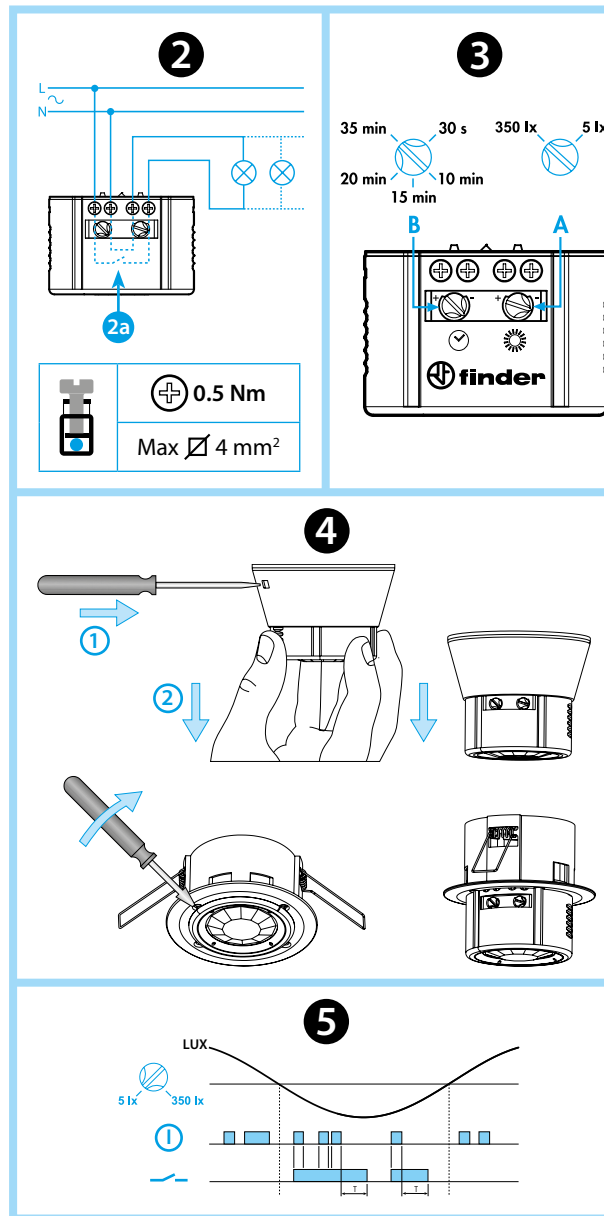
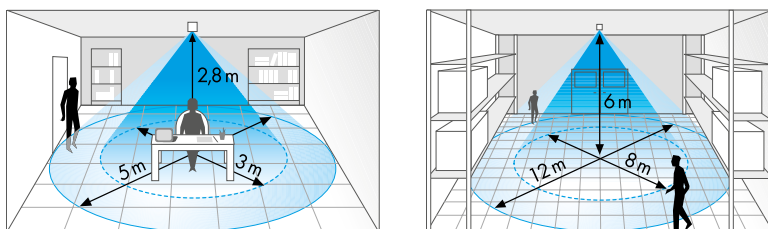


18.31.8.230.0031

EN 60669 - 1 / EN 60669 - 2 - 1		
	18.31.8.230.0031 U_N (120...230) V AC (50/60 Hz) U_{min} 96 V AC U_{max} 253 V AC P 2 V A (50 Hz) / 1 W	
	1 NO (SPST–NO) 10 A 120 V AC 10 A 230 V AC	
	AC1	2300 VA
	AC15 (120 V AC)	250 VA
	AC15 (230 V AC)	450 VA
	 (120 V AC)	500 W
 (230 V AC)	1000 W	
 (120 V AC)	200 W	
 (230 V AC)	350 W	
 CFL-LED (230 V AC)	300 W	
	(-10...+50)°C	
IP40		



6



ENGLISH

18.31
PIR MOVEMENT AND PRESENCE DETECTOR FOR
APPLICATIONS WITH HIGH CEILINGS (up to 6 meters)

1 INSTALLATION SEQUENCE

2 CONNECTION DIAGRAM

2a Internal connections

3 SETTINGS

A ambient light intervention threshold (5...350)lx

B output on-pulse time (30s...35min)

NOTE

By adjusting the selector A to the maximum value the PIR will control the contact independent of the ambient light level

4 DISASSEMBLY

5 FUNCTION CHART

① Detection of movement

— Output Contact

6 SIDE VIEW

(Sensing area - Ceiling mounting)

Sensing area 110°

NOTE

Following the initial power-on, and power-on following a power interruption, the detector makes a hardware-software initialisation for approximately 30 seconds