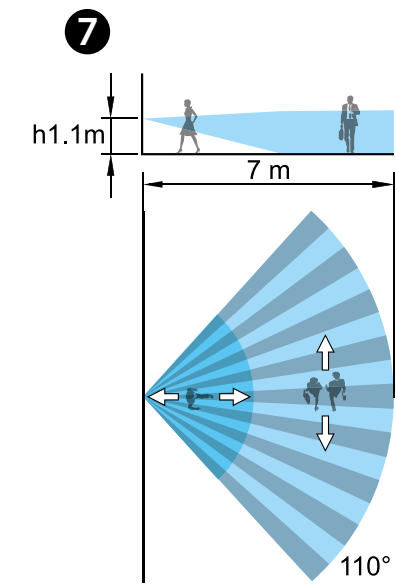
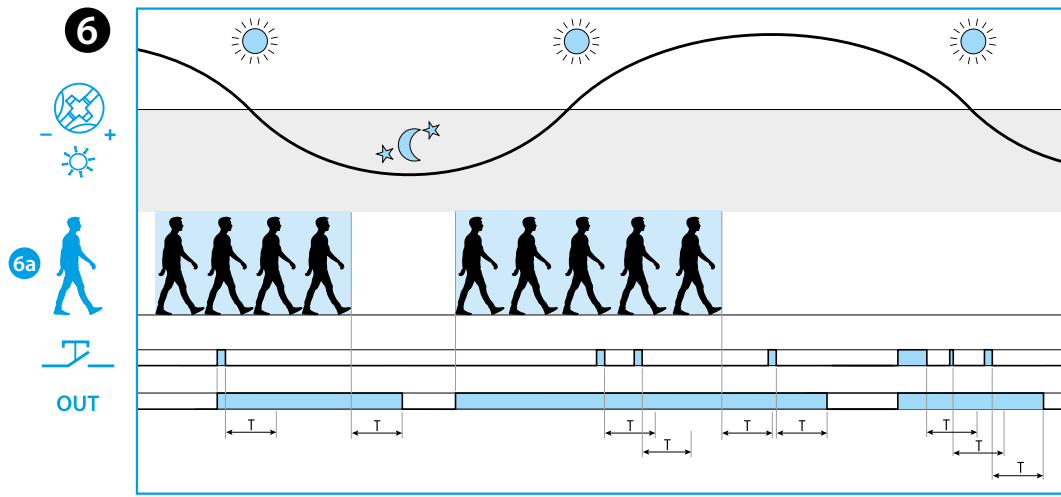


18.91
PIR MOVEMENT DETECTOR-WALL MOUNTING

- 1 WIRING DIAGRAM**
1a Optional push-button connection
- 2 INSTALLATION**
- 3 OPENING COVER**
- 4 SETTINGS**
4a Turn-off delay setting (10 s...20 min)
4b Ambient light intervention threshold setting (5...500) lx 18.91.8.230.0042 (6...600) lx 18.91.8.230.0040 (Maximum lx = always ON (∞ lx))
- 5 ADAPTOR**
(See table 5a for compatible systems)
Note that these trademarks and trade names are not the property of Finder SpA or any of its associated companies, and are referred to in this sheet for the purposes of technical information only.
- 6 FUNCTION CHART**
6a Detection of movement
OUT Solid State Output (TRIAC)
Detected movement closes, or keeps closed, the output contact
OPTIONAL CONNECTION 1a
Operating the push-button closes, or keeps closed, the output contact - for the set time T
- 7 SENSING AREA**

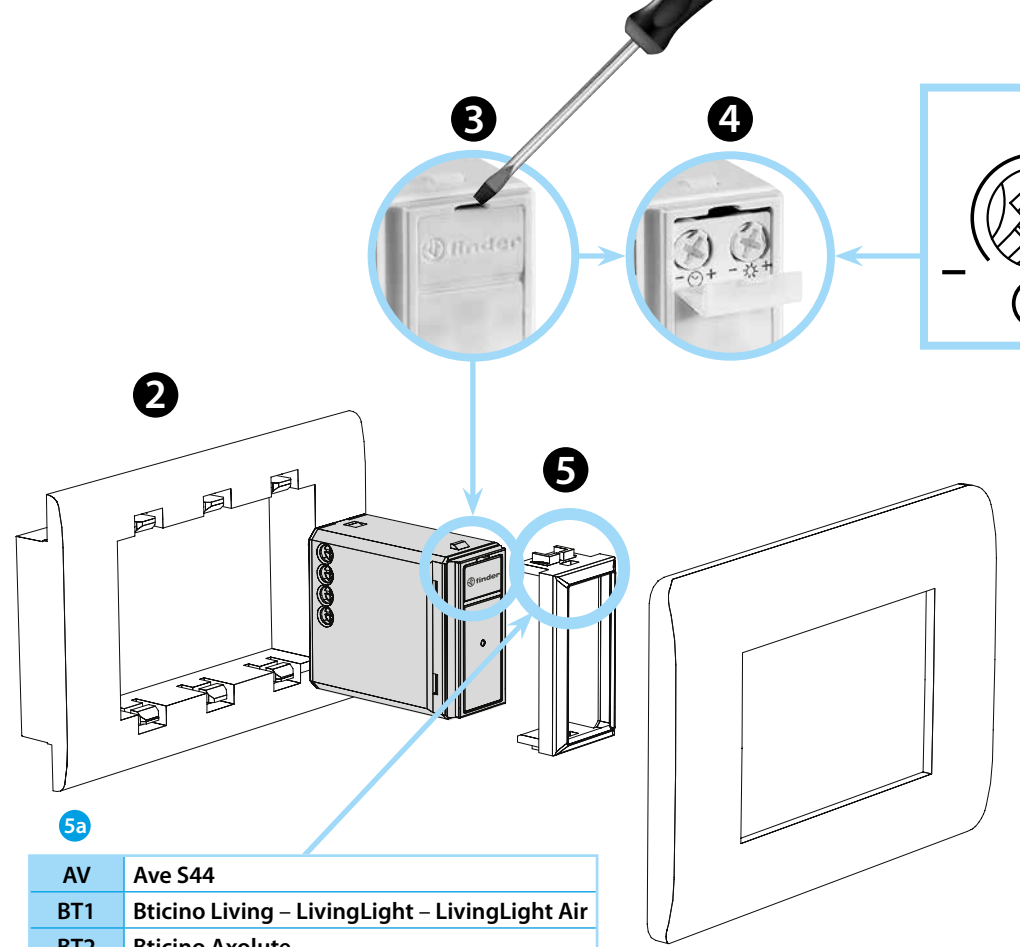
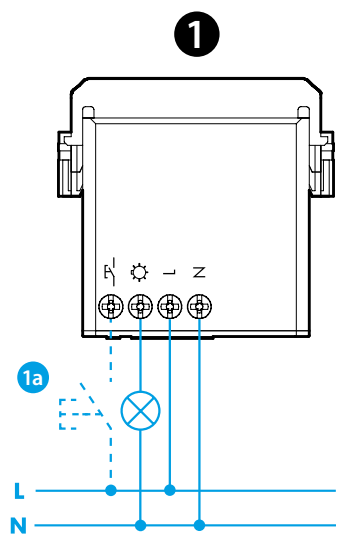
NOTE
- Power consumption: 0.2 W (stand-by)
0.65 W with output ON
- External push-button to force the output contact ON (closed)
- Type:
18.91.8.230.0040: white
18.91.8.230.0042: anthracite



EN 60669-1 / EN 60669-2-1	
	18.91.8.230.004x U _N 230 V AC (50/60 Hz) U _{min} 184 V AC U _{max} 253 V AC P 14 VA (50 Hz) / 0.5 W
OUT (TRIAC)	(230 V) 200 W (230 V) 200 W CFL-LED (230 V) 200 W
	(-10...+50)°C
IP20	



18.91



AV	Ave S44
BT1	Bticino Living - LivingLight - LivingLight Air
BT2	Bticino Axolute
GW	Gewiss Chorus - Bticino Matix
GW1	Gewiss System
SU	Simon Urmet Nea
VM1	Vimar Plana - Eikon-Arké
VM2	Vimar Idea