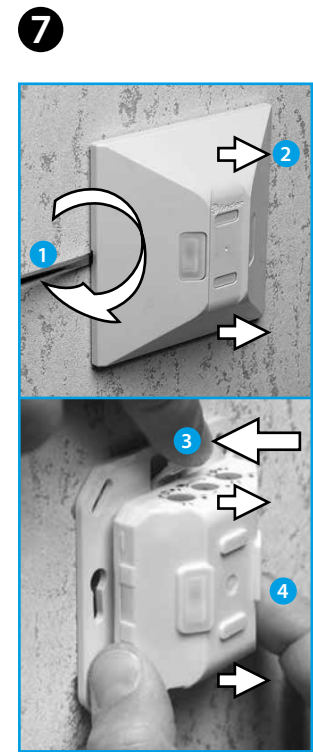
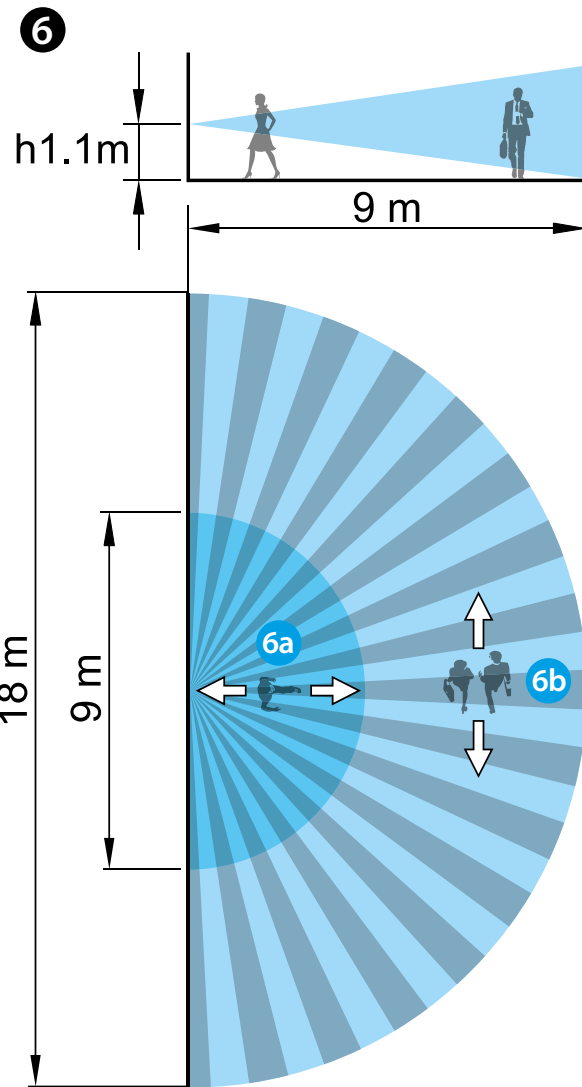
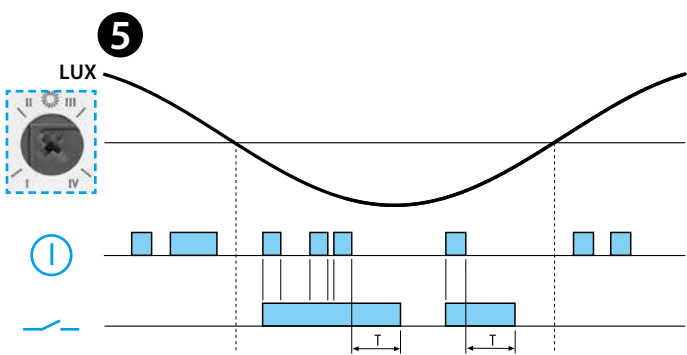
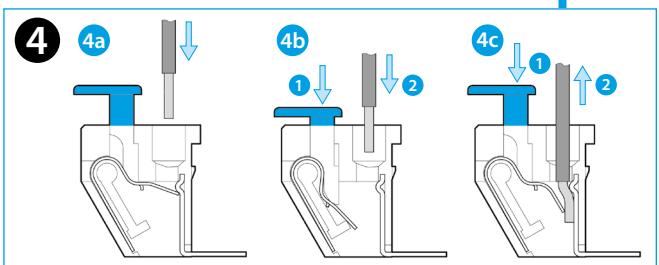
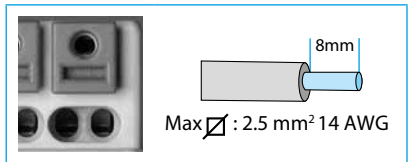
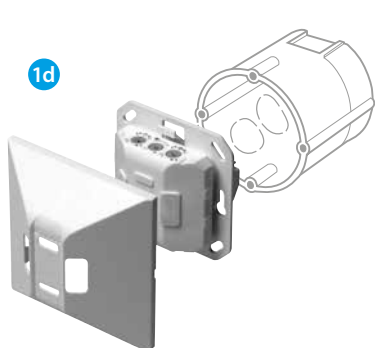
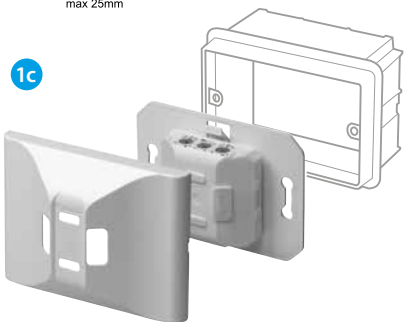
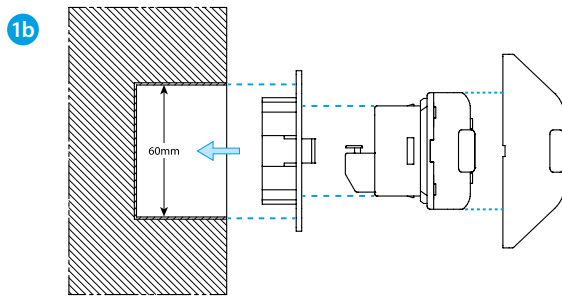
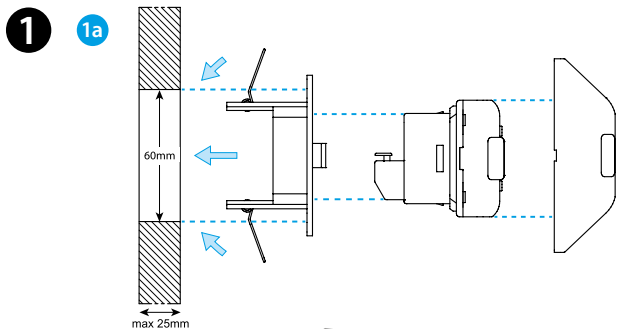
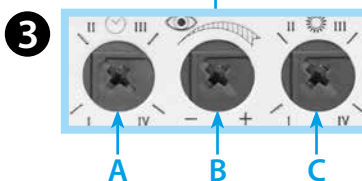
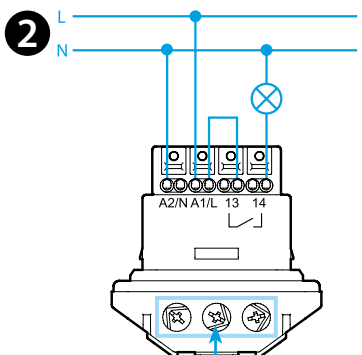




18.61

EN 60669 - 1 / EN 60669 - 2 - 1	
	18.61.8.230.0300 U _N (110...230)V AC (50/60 Hz) U _{min} 96 V AC U _{max} 253 V AC P 1.5 VA (50 Hz) / 1 W
	1 NO (SPST-NO) 10 A 250 V AC
	AC1 2500 VA AC15 450 VA (230 V) 1000 W (230 V) 350 W CFL-LED (230 V) 300 W
	(-10...+50)°C
IP40	



ENGLISH

18.61 PIR MOVEMENT DETECTOR WALL MOUNTING

- 1 INSTALLATION**
 - 1a** Recess mounting
 - 1b** Recess mounting in box
 - 1c** Flush mounting box (3 gang)
 - 1d** Ø 60 mm box
- 2 WIRING DIAGRAM**
- 3 SETTINGS**
 - A** turn-off delay setting (I=12 s - II=3 min - III=15 min - IV=35 min)
 - B** sensitivity setting:
Adjust sensitivity to suit the location and avoid false triggering
 - C** ambient light intervention threshold setting
(I=1 lx - II=10 lx - III=500 lx - IV= always ON (∞ lx))
- 4 TERMINAL PUSH-IN CONNECTION**
 - 4a** Connection - solid cable or with ferrules
 - 4b** Connection - stranded cable
 - 4c** Disconnection
- 5 FUNCTION CHART**
 - Detection of movement
 - Output Contact
- 6 SENSING AREA**
 - Specific for wall mounting
 - Mounting height: 1.1 m (example)
 - 6a** Radial movement
 - 6b** Tangential movement
 - Sensing area 180°
- 7 DISMOUNTING**