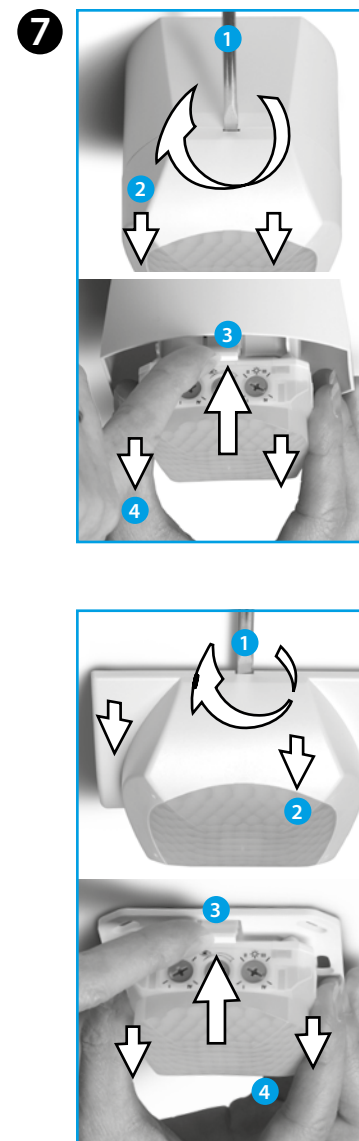
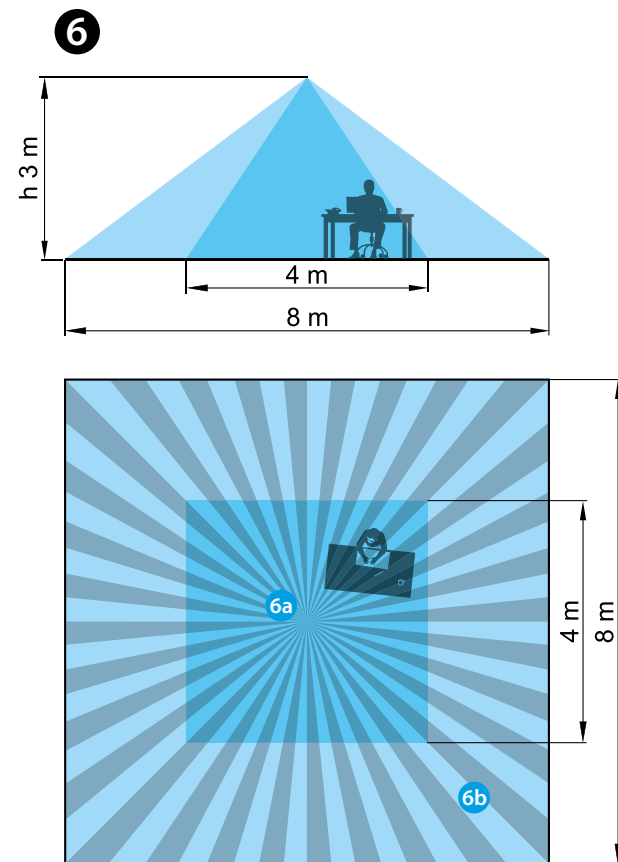
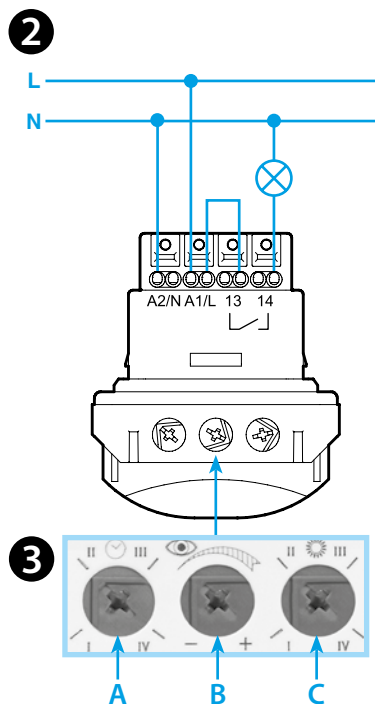
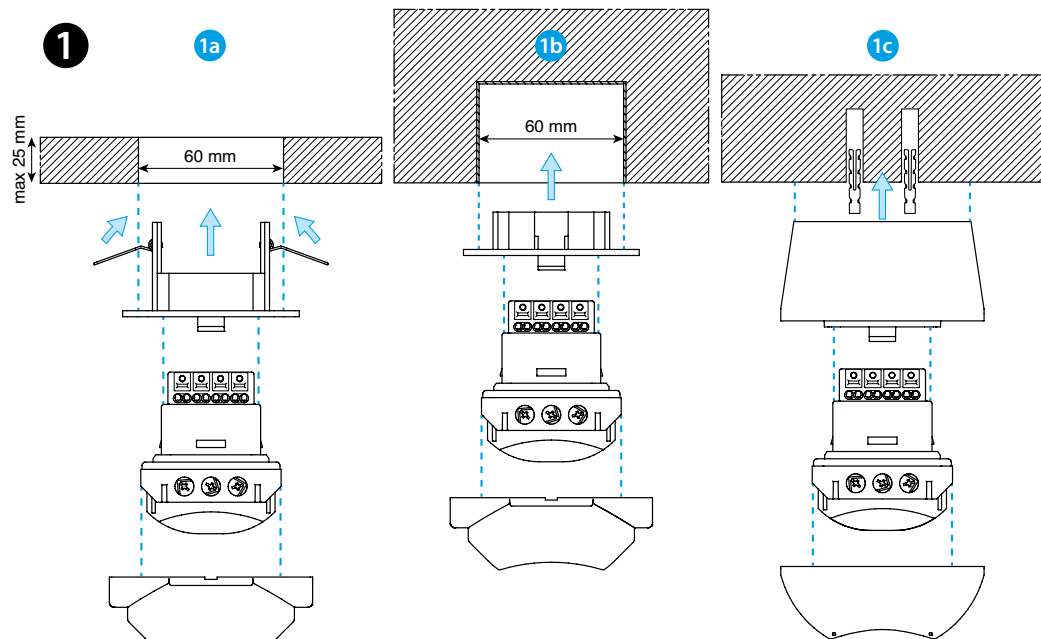
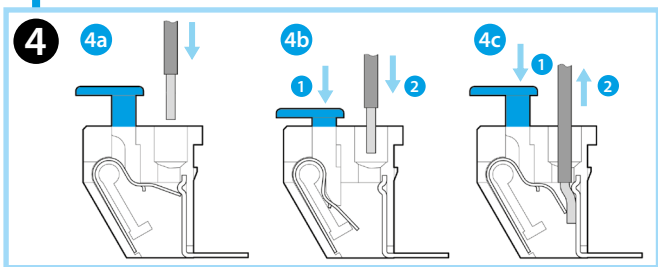
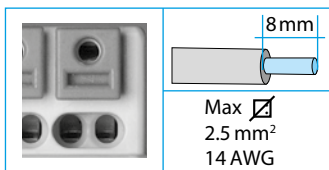




18.51

EN 60669-1 / EN 60669-2-1	
	18.51.8.230.0300 U _N (110...230)V AC (50/60 Hz) U _{min} 96 V AC U _{max} 253 V AC P 1.5 VA (50 Hz) / 1 W
	1 NO (SPST-NO) 10 A 250 V AC
	AC1 2500 VA AC15 450 VA ⚡ (230 V) 1000 W ⚡ (230 V) 350 W CFL-LED (230 V) 300 W
	(-10...+50)°C
IP40	



ENGLISH

18.51 PIR MOVEMENT AND PRESENCE DETECTOR

1 INSTALLATION

- 1a Suspended ceiling mounting
- 1b Recess mounting
- 1c Surface mounting

2 WIRING DIAGRAM

3 SETTINGS

- A Turn-off delay setting (I = 12 s - II = 3 min - III = 15 min - IV = 35 min)
- B Sensitivity setting: Adjust sensitivity to suit the location and avoid false triggering
- C Ambient light intervention threshold setting (I = 1 lx - II = 10 lx - III = 500 lx - IV = always ON (∞ lx))

4 TERMINAL PUSH-IN CONNECTION

- 4a Connection-solid cable or with ferrules
- 4b Connection-stranded cable
- 4c Disconnection

5 FUNCTION CHART

- Detection of movement
- Output Contact

6 SENSING AREA

- 2 sensing area (h = 3 m):
- 6a Presence (micromovements): (4x4)m
- 6b Movement: (8x8)m
- Sensing area 360°

7 DISMOUNTING