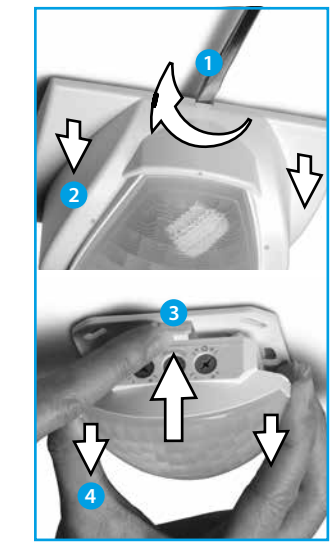
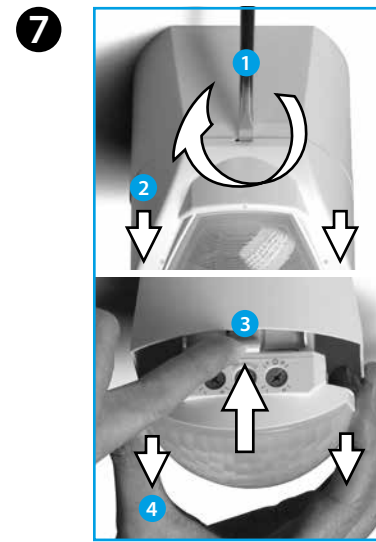
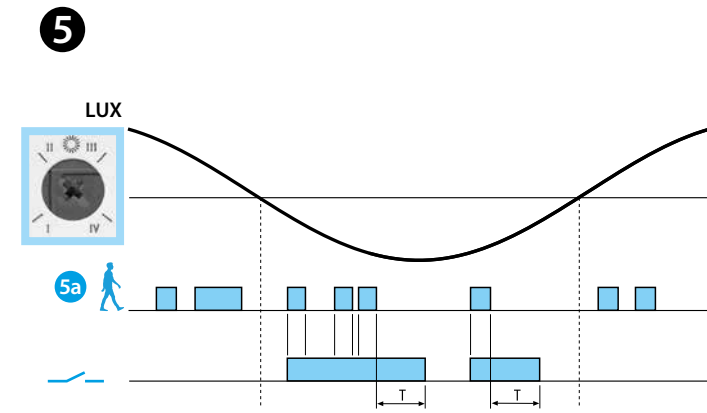
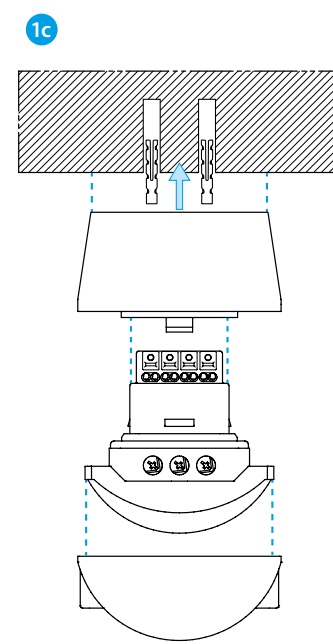
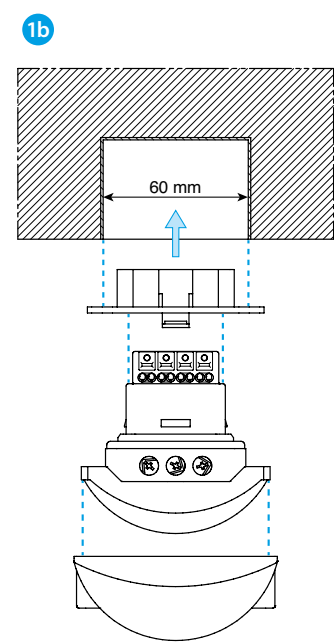
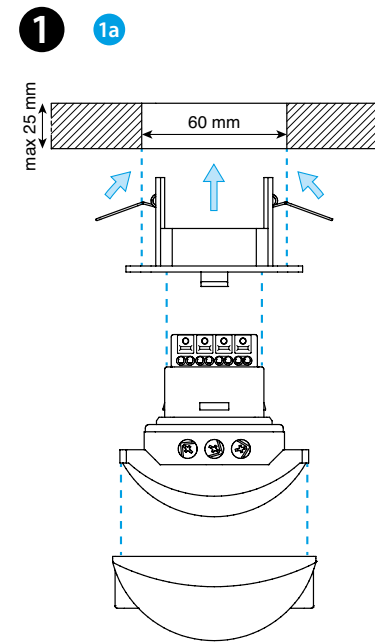
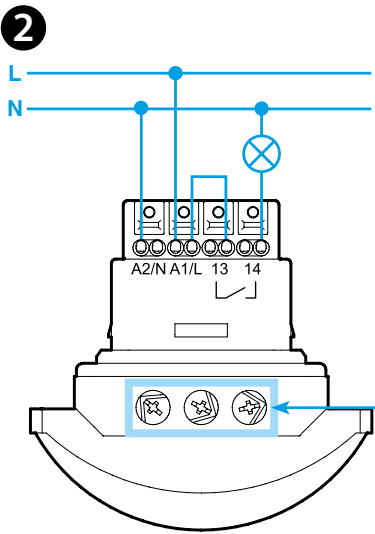




18.41



EN 60669-1 / EN 60669-2-1	
	<b>18.41.8.230.0300</b> U <sub>N</sub> (110...230)V AC (50/60 Hz) U <sub>min</sub> 96 V AC U <sub>max</sub> 253 V AC P 1.5 VA (50 Hz) / 1 W
	1 NO (SPST-NO) 10 A 250 V AC
	AC1 2500 VA
	AC15 450 VA
	(230 V) 1000 W
	(230 V) 350 W
	CFL-LED (230 V) 300 W
	(-10...+50)°C
IP40	



# ENGLISH

## 18.41 PIR MOVEMENT DETECTOR FOR CORRIDORS

- 1 INSTALLATION**
- 1a** Suspended ceiling mounting
  - 1b** Recess mounting
  - 1c** Surface mounting
- 2 WIRING DIAGRAM**
- 3 SETTINGS**
- A** turn-off delay setting (I=12 s; II=3 min; III=15 min; IV=35 min)
  - B** sensitivity setting: Adjust sensitivity to suit the location and avoid false triggering
  - C** ambient light intervention threshold setting (I=1 lx; II=10 lx; III=500 lx; IV= always ON (∞ lx))
- 4 TERMINAL PUSH-IN CONNECTION**
- 4a** Connection - solid cable or with ferrules
  - 4b** Connection - stranded cable
  - 4c** Disconnection
- 5 FUNCTION CHART**
- 5a** Detection of movement
  - Output Contact
- 6 SENSING AREA**
- Sensing area (h=3 m):  
30 m length – 4 m width
- 6a** Tangential movement
  - 6b** Radial movement
- 7 DISMOUNTING**
- NOTE**  
Following the initial power-on, and power-on following a power interruption, the detector makes a hardware-software initialisation for approximately 30 seconds.

