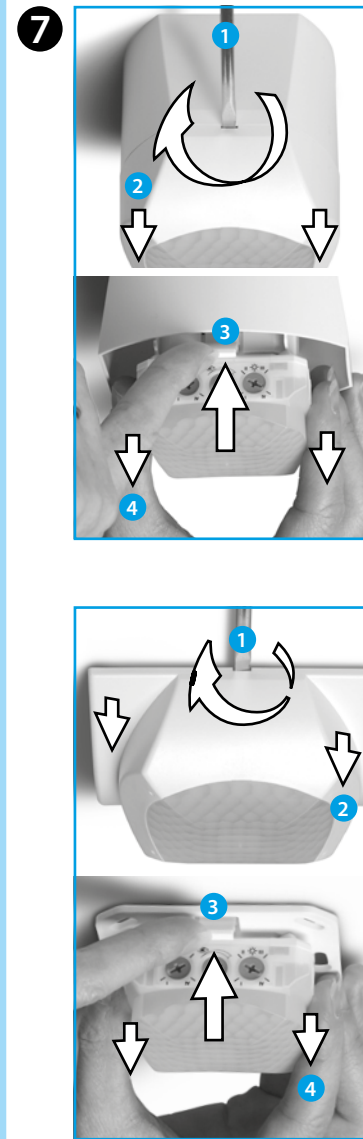
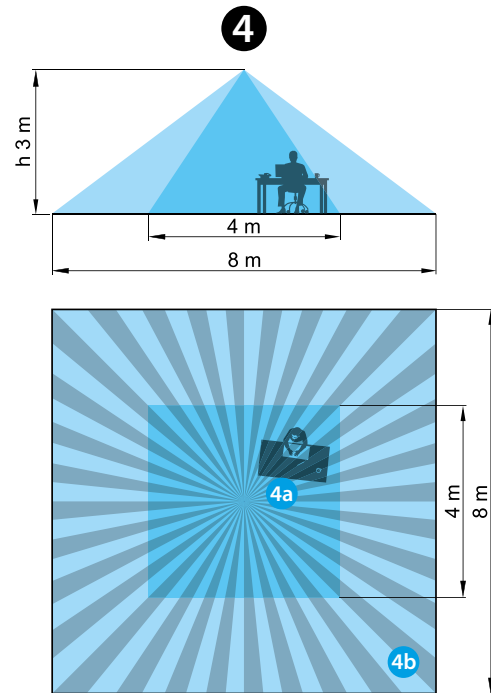
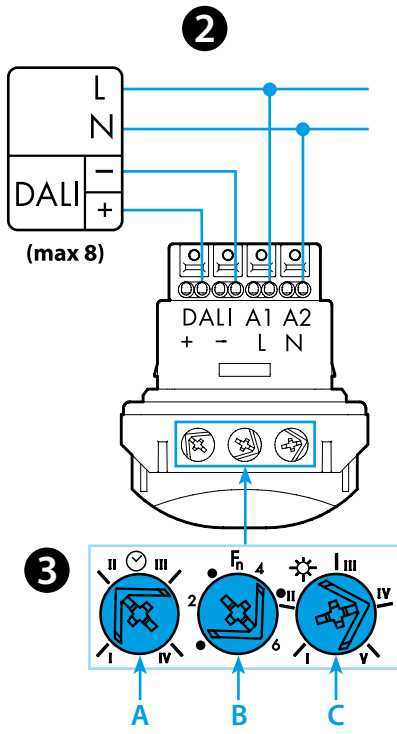
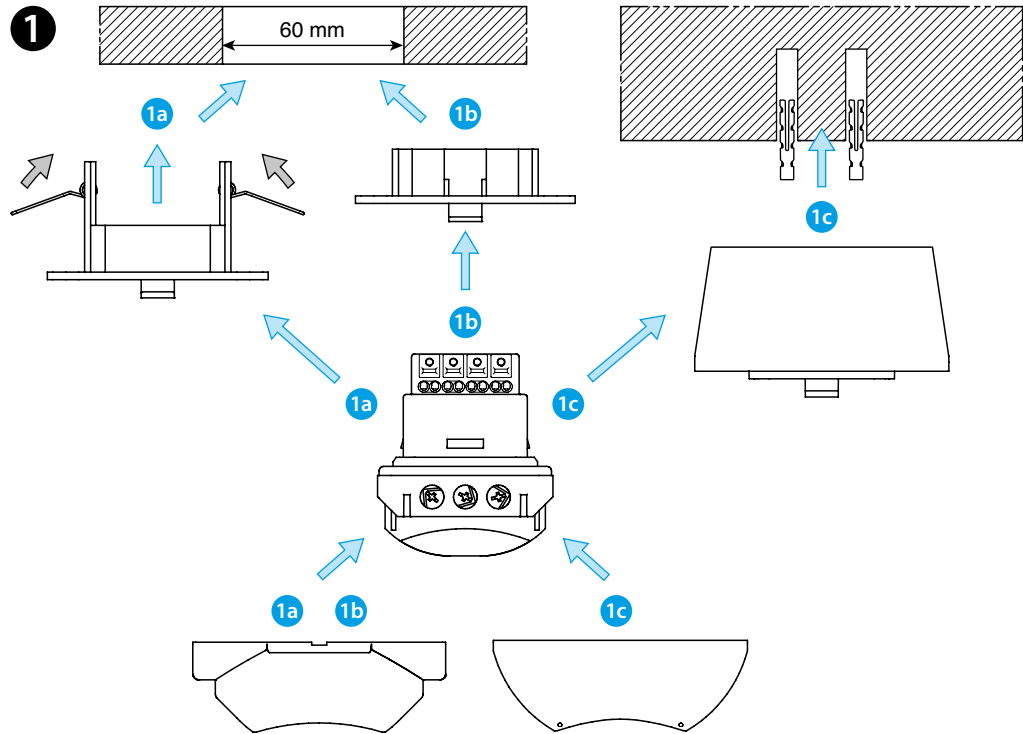
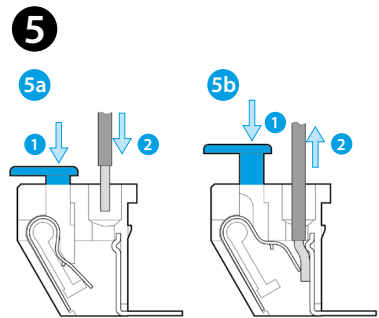




18.5D

EN 60669-1 / EN 60669-2-1	
	18.5D.8.230.0000
	U _N (110...230)V AC (50/60 Hz)/DC
	U _{min} 96 V AC/DC
	U _{max} 253 V AC/DC
OUT	DALI (EN 62386)
	Max 8 DALI ECG (Electronic Control Gear)
	(-10...+50)°C
IP40	



ENGLISH

18.5D PIR MOVEMENT AND PRESENCE DETECTOR WITH DALI

- 1 INSTALLATION**
 - 1a Suspended ceiling mounting
 - 1b Recess mounting
 - 1c Surface mounting
- 2 WIRING DIAGRAM**

DALI control interface, maximum of 8 DALI ECG units (Electronic Control Gear)
- 3 SETTINGS**
 - A Turn-Off delay setting (I = 10 s / II = 5 min / III = 15 min / IV = 35 min)
 - B Function selection:
 - 1 Daylight-linked constant light level control with minimum PIR sensitivity
 - 2 Daylight-linked constant light level control with maximum PIR sensitivity
 - 3 On/Off control with (50%) early warning & (10%) courtesy light power with minimum PIR sensitivity
 - 4 On/Off control with (50%) early warning & (10%) courtesy light power with maximum PIR sensitivity
 - 5 On/Off control with (50%) early warning & Off light with minimum PIR sensitivity
 - 6 On/Off control with (50%) early warning & Off light with maximum PIR sensitivity
 - C Ambient light intervention threshold/constant light level setting
 - I. < 20 lx
 - II. 100 lx
 - III. 300 lx
 - IV. 800 lx
 - V. ∞ lx
- 4 SENSING AREA**

Two detection areas (at 3 m height):
4a Presence (micro-movements): (4x4)m
4b Movement: (8x8)m
- 5 PUSH-IN TERMINAL CONNECTION**
 - 5a Connection - solid or ferruled conductor
 - 5b Disconnection
- 6 WORKING EXAMPLES**
 - 6a Function 1 or 2 - Light output power varies to maintain the desired light level set by 3 C
 - 6b Function 3 or 4 - Light output On at 100% power - no detection within Off delay and light output power falls to 50% for 20 seconds - followed by a fall to 10%
 - 6c Function 5 or 6 - Light output On at 100% power - no detection within Off delay and light output power falls to 50% for 20 seconds - followed by a fall to 0%
- 7 DEMOUNT**