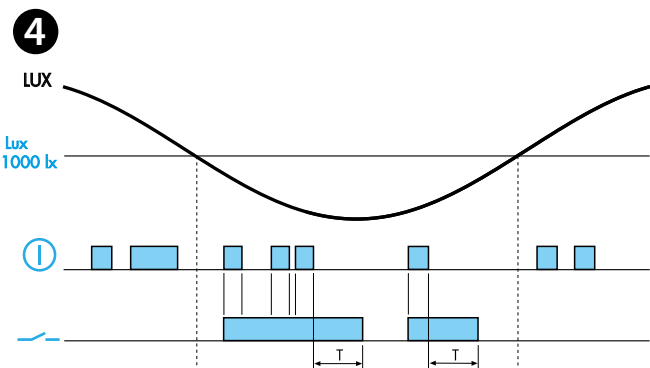
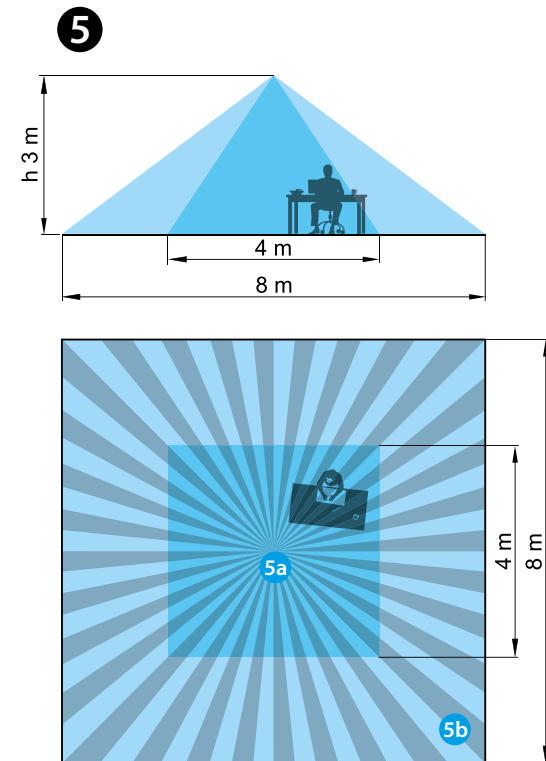
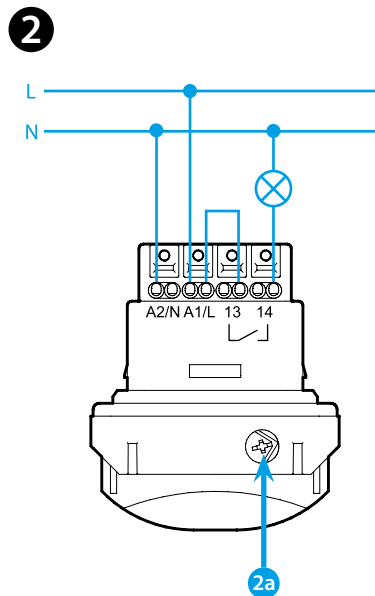
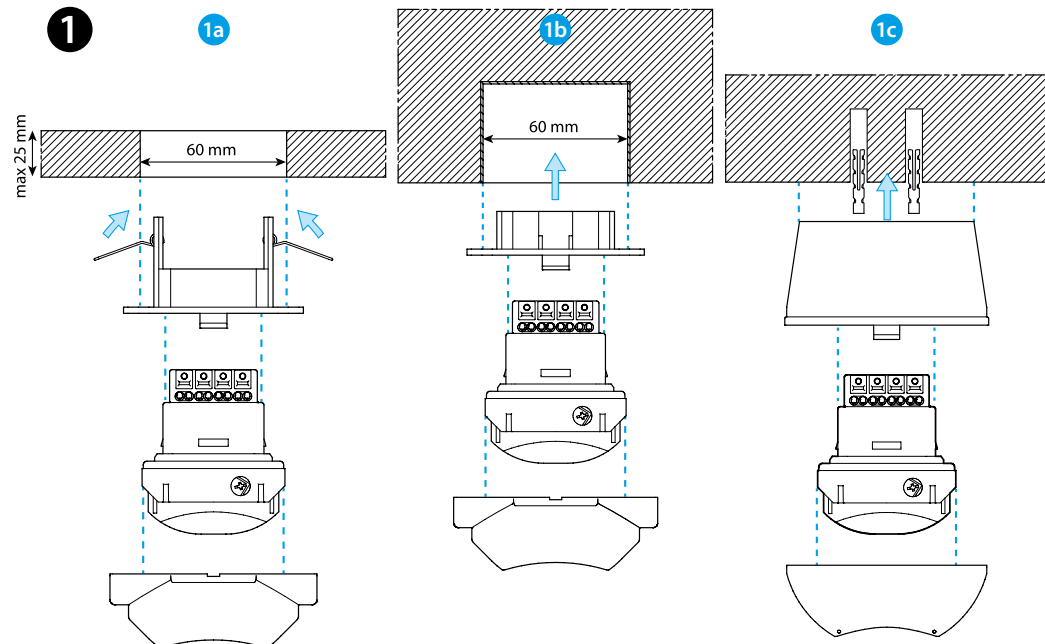
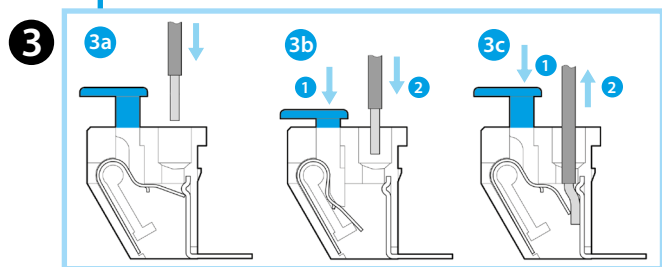
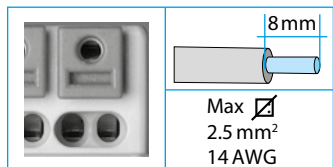




18.51

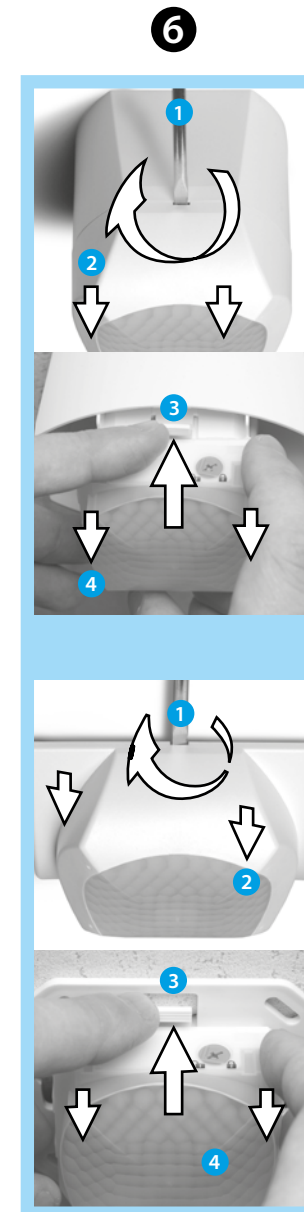
| | |
|------------------------------|----------------------------------------------------------------------------------------------------------------------------------------------------------|
| EN 60669 -1 / EN60669 - 2 -1 | |
| | 18.51.8.230.B300 U _N (110...230) V AC (50/60 Hz) U _{min} 96 V AC U _{max} 253 V AC P 1.5 VA (50 Hz) / 1 W |
| | 1 NO (SPST-NO) 10 A 230 V AC |
| | AC1 2300 VA |
| | AC15 (230 V AC) 450 VA |
| | ⚡ (230 V AC) 1000 W |
| | ⚡ (230 V) 350 W |
| | CFL-LED (230 V) 300 W |
| | |
| | (-10...+50)°C |
| IP40 | |



7 Bluetooth

7a Download on the App Store

7b GET IT ON Google Play



ENGLISH

18.51 PIR MOVEMENT AND PRESENCE DETECTOR with Bluetooth programming

- 1 INSTALLATION**
1a Suspended ceiling mounting
1b Recess mounting - **1c** Surface mounting
- 2 WIRING DIAGRAM**
2a Lock / unlock PIN selector
- 3 PUSH-IN TERMINALS**
3a Connect using solid cable or with ferrules
3b Connect using stranded cable
3c Disconnect
- 4 FUNCTION CHART**
— Output Contact - ① Detection of movement
- 5 SENSING AREA**
5a presence (micromovements): (4x4) m - (h=3 m)
5b movement: (8x8) m - (h=3 m)
- 6 DEMOUNTING**
- 7 SETTINGS**
The settings (delay setting, sensitivity setting, ambient light intervention threshold setting, PIN) are made by smartphone through **Finder Toolbox** App, downloaded by:
7a Apple Store for Apple devices
7b Google Play for Android devices
 - 1 On smartphone:** open the Finder Toolbox App
 - Select **"Configure your device"** - **"18 Series"** - **"18.51"**
From the list (nearest device listed first) select the device.
A red light on 18.51 confirms the connection.**Settings**
 - Delay setting: (12 s...25 min)
 - Sensitivity setting: adjust sensitivity to suit the location and avoid false triggering
 - Ambient light intervention threshold: (4 lx...1000 lx)**PIN setting**
 - 1 On 18.51:** set the selector **2a** to
 - 2 On smartphone:** open the Finder Toolbox App
 - Select **"Configure your device"** - **"18 Series"** - **"18.51"**
 - From the list (nearest device listed first) select the device.
A red light on 18.51 confirms the connection.
 - Push the lock icon and enter the PIN
 - 6 On 18.51:** rotate the selector **2a** from to**NOTE**
When locked by PIN code, the code will be requested each time the user wishes to change the settings of the device