

18 Series

Movement and presence detectors 10 A



NEW

Type 18.41

Ceiling mounted movement detector. Specifically for corridors up to 30 meters in length



NEW

Type 18.51

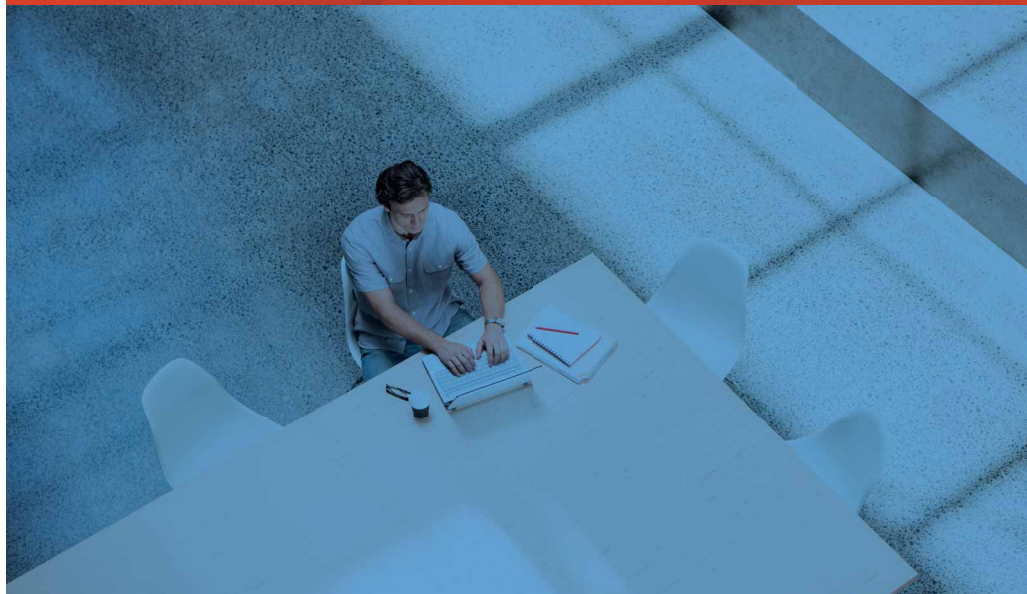
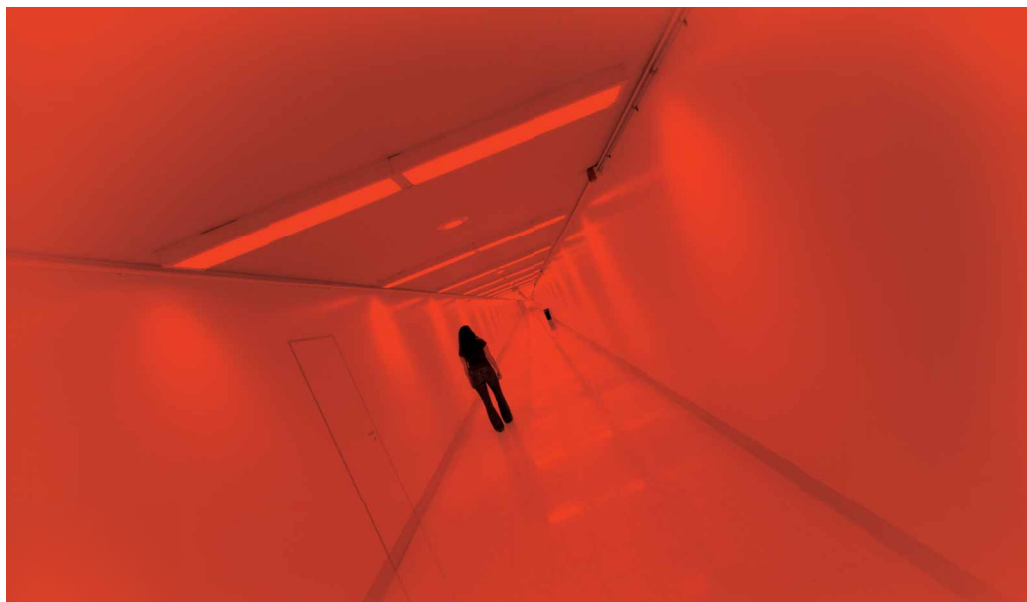
Ceiling mounted presence detector. High sensitivity and uniform detection



NEW

Type 18.61

Wall mount movement detector. Wide angle of survey



New generation of movement and presence detectors

PIR movement detector for corridors type 18.41

Primarily for use in rectangular areas such as hotel lobbies and corridors, offices and walkways. This version's characteristics are achieved by the combination of a special lens and electronics, which enables a survey area of 15 meters either side of the device, making a total sensing zone of 30 meters long by 4 meters wide. The sensing at 15 meters is achieved for tangential movements, whilst 9 meters applies for radial movements.



PIR movement and presence detector type 18.51

Specifically designed to respond to very small movements, this version is suitable for use in offices, schools, and the workplace in general. The lens has been developed to achieve two zones of different sensitivity: The overall area of 8 x 8 meters is sensitive to normal movement whereas the central section of 4 x 4 meters is able to respond to "body presence" by detecting very small movements.



Wall mount PIR movement detector type 18.61

With the latest evolution in movement detector techniques this product features a wide viewing angle of 180°, and is specifically for wall mounting. Depending on the installation, the 18.61 can be installed in corridors along with the 18.41 as well as in small spaces such as bathrooms or passage areas. Essentially it can be installed as a replacement for a wall mounted light switch or push-button. The new "TwinMirrors" technology contributes to the 18.61's compact, modern design. The survey area is a semi-circle with a radius of 9 meters.



Sensing area

Type 18.41

Applications

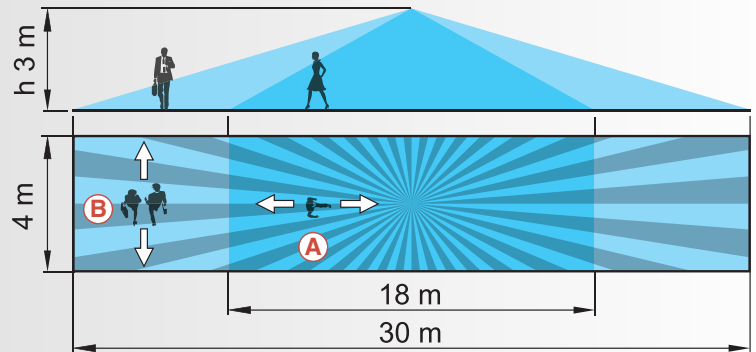
Hotel and office corridors, transit areas

Sensing area

Sensing area ($h = 3\text{ m}$):
30 m length – 4 m width

A: Radial movement

B: Tangential movement



Type 18.51

Applications

Offices, schools, zones of low activity

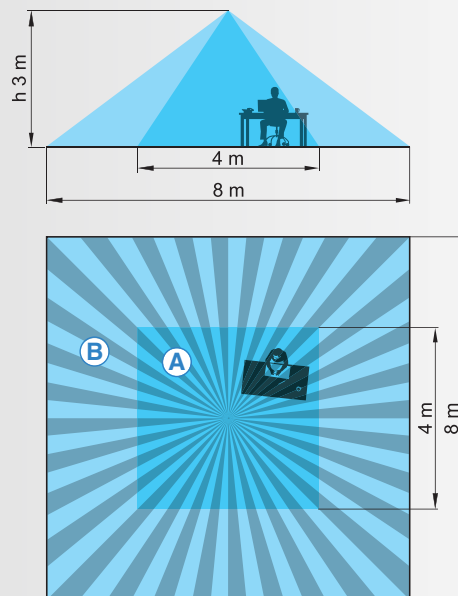
Sensing area

2 sensing area ($h = 3\text{ m}$):

A: presence (micromovements):
(4x4)m

B: movement: (8x8)m.

Sensing area: 360°



Type 18.61

Applications

Specific product for wall mounting

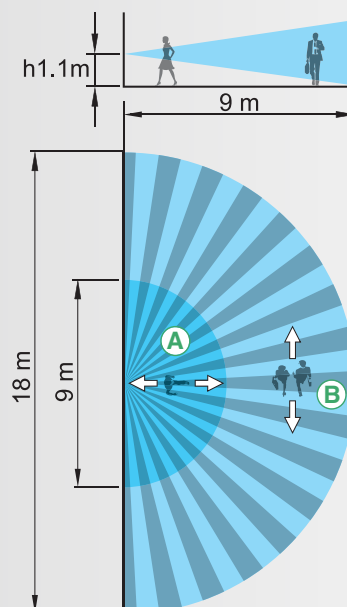
Sensing area

Mounting height: 1.1 m

A: Radial movement

B: Tangential movement.

Sensing area: 180°



18 Series - Movement and presence detector 10 A

18.41

18.51

18.61

Recessed ceiling and
flush box versions



Surface versions



Contact specification

Number of contacts	1 NO (SPST-NO)	1 NO (SPST-NO)	1 NO (SPST-NO)
Rated current/Maximum peak current A	10 / 20 (100 A 5 ms)	10 / 20 (100 A 5 ms)	10 / 20 (100 A 5 ms)
Rated voltage/Maximum switching voltage V AC	250 / 400	250 / 400	250 / 400
Rated load AC1 VA	2500	2500	2500
Rated load AC15 VA	450	450	450
Nominal lamp rating: incandescent/halogen 230V W	1000	1000	1000
Fluorescent lamp with Electronic ballast W	500	500	500
Fluorescent lamp with Electromechanical ballast W	350	350	350
CFL W	300	300	300
LED 230 V W	300	300	300
Halogen or LV LED with electronic ballast W	300	300	300
Halogen or LV LED with electromechanical ballast W	500	500	500
Standard contact material	AgSnO ₂	AgSnO ₂	AgSnO ₂

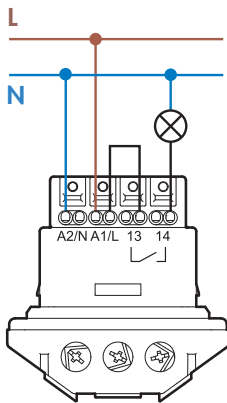
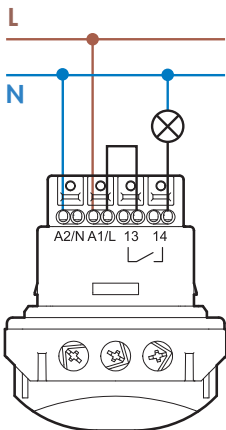
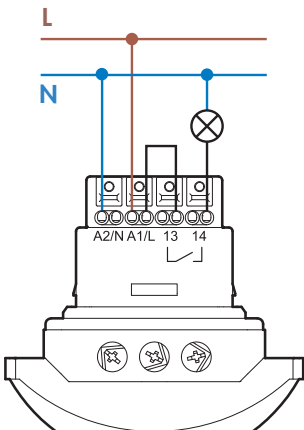
Supply specification

Coil specification V AC (50/60 Hz)	110...230	110...230	110...230
Rated power VA (50 Hz)/ W	1.5 / 1	1.5 / 1	1.5 / 1
Operating range V AC (50/60 Hz)	96...253	96...253	96...253

Technical data

Electrical life at rated load AC1 cycles	100 · 10 ³	100 · 10 ³	100 · 10 ³
Ambient light intervention threshold lx	1...500	1...500	1...500
Light on time after last detection	12 s...35 min	12 s...35 min	12 s...35 min
Sensing area diameter	See diagram	See diagram	See diagram
Ambient temperature range °C	-10...+50	-10...+50	-10...+50
Protection category	IP 40	IP 40	IP 40

Wiring diagram



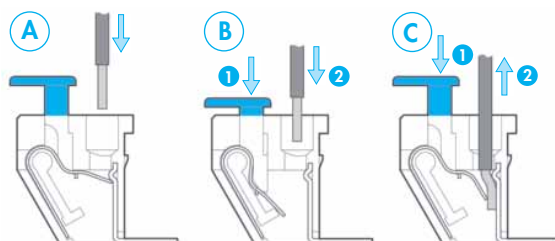
All-in-one: All mounting accessories are included in the packaging – just use the one appropriate for your installation

Type	Suspended ceiling mounting	Recess mounting	Surface mounting
18.41			
18.51			
Type	Recessed wall mounting	Wall mount box	
18.61			

Extremely simple, fast and secure installation

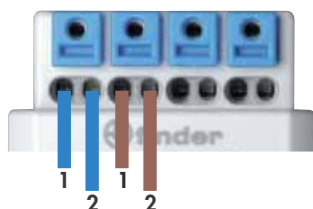
Push-in terminals

The push-in terminals permit the quick connection of solid wires or ferrules by their simple insertion into the terminal (A). It is possible to open the terminal to extract the wire by first pushing down on the push-button using a screwdriver or fingers (C). For stranded cable it is necessary first to open the terminal using the push button, both for the extraction (C) and insertion (B).



Double terminals

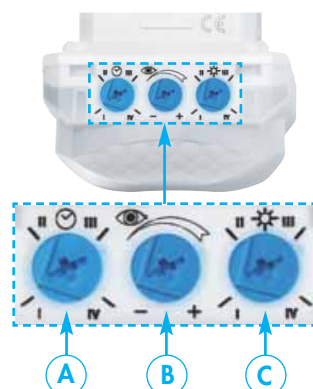
Double terminals for the easy "looping" between multiple 18 Series. The Max. wire size for each terminal is 2.5 mm². The terminals are equipped with a test hole to take a test probe.



Settings

The **ambient light intervention threshold** can be set from the lowest value (about 1 lx) to the optimal value for offices and working area (about 500 lx), with the possibility to exclude totally the intervention of the light sensor (set to ∞ lx). The **light on time** following last detection can be regulated between 12 seconds to 35 minutes.

- A:** turn-off delay setting (I=12s; II=3min; III=15min; IV=35min)
- B:** sensitivity setting: Adjust sensitivity to suit the location and avoid false triggering
- C:** ambient light intervention threshold setting (I=1lx; II=10lx; III=500lx; IV= always ON (∞ lx))



Finder 18 Series.

An expanding range of movement and presence detectors with added versatility and functionality

Type 18.11
for external
installations (IP 54).
Wall mounting



Type 18.01
for internal installations.
Wall mounting



Type 18.31
for internal installations.
Recessed mounting

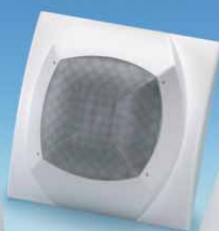


Type 18.21
for internal
installations.
Surface
mounting



Type 18.41
Movement
detector
for corridors.
Ceiling mounting.

Type 18.51
Presence
detector.
Ceiling
mounting.



Type 18.61
Movement detector
for wall mounting.



finder®

Since 1954, light when you need it



MADE IN ITALY



ISO 9001:2008



ISO 14001:2004

www.findernet.com