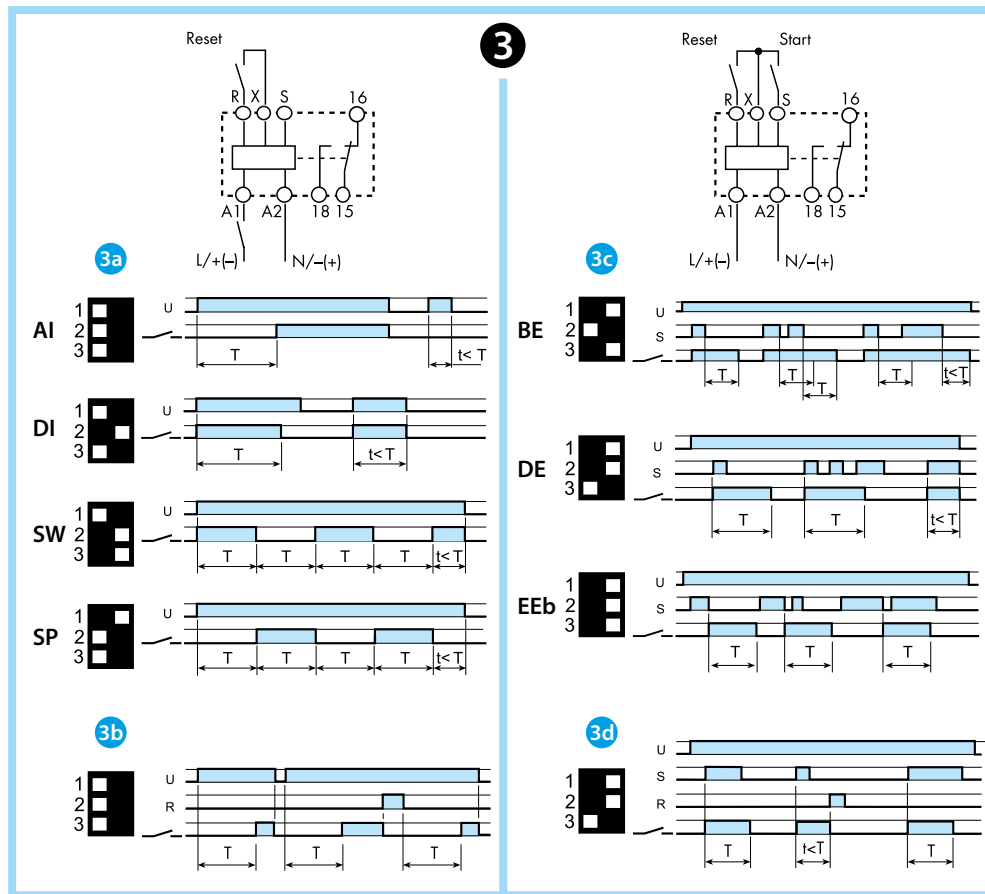
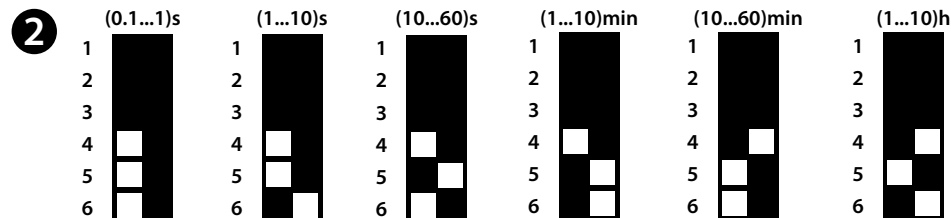
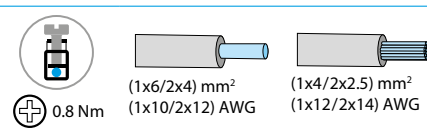
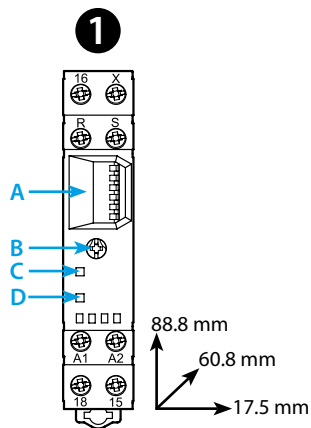




81.01

	81.01.0.230.0000 U _N (12...230) V AC (50/60 Hz) / DC U _{min} 10.8 V AC / DC U _{max} 250 V AC / DC P < 2 VA / < 2 W
	1CO (SPDT) 16 A 250 V AC
	AC1 4000 VA AC15 (230 V AC) 750 VA (M) (230 V AC) 0.55 kW DC1 (30/110/220) V (16/0.3/0.12) A
	(-10...+50)°C
IP20	



ENGLISH

81.01

MODULAR TIMER MULTI-FUNCTION WITH START AND RESET

1 FRONT VIEW

- A Dip Switch for functions and time scale setting
- B Time setting
- C LED: supply ON
- D LED: relay ON

2 TIME SCALES

3 WIRING DIAGRAM AND FUNCTIONS

3a Without signal START functions

Start via contact in supply line (A1)

AI On-delay

DI Interval

SW Symmetrical flasher (starting pulse on)

SP Symmetrical flasher (starting pulse off)

3b RESET function (R) (example)

3c External START functions

Start via contact into control terminal (S, X)

BE Off-delay with control signal

DE Interval with control signal on

EEb Interval with control signal off

3d RESET function (R) (example)

NOTE

Do not connect the R, X, S terminals to supply voltage.

Time scales and functions must be set before energising the timer.

Minimum control impulse time 50 ms.

Recovery time ≤ 50 ms.

35 mm rail mounting (EN 60715).