

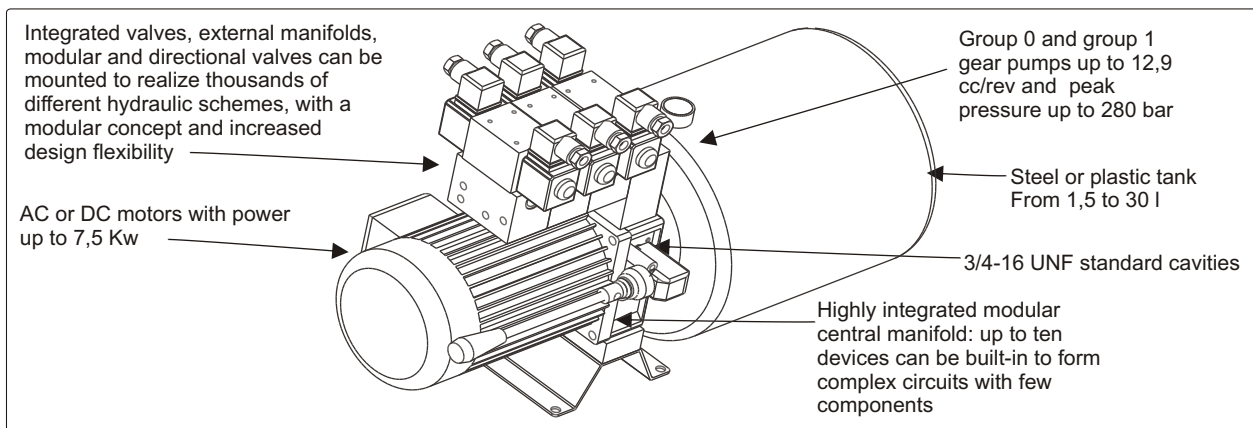
Hydronit



**AC & DC Hydraulic
Power Packs Compact series**



Power Packs Compact series



**The central manifold is the core part of our mini power packs system.
Its advanced design offers four main advantages:
high integration, modularity, performance and market compatibility**

HIGH INTEGRATION AND SYSTEM MODULARITY

- Modular system of sub-parts assembled to easily realize thousands of different configurations at the same time offering to distributors the possibility to optimize their stock thanks to the reduced number of parts.
- A single Universal central manifold with multiple executions available to realize either the simplest or the most complex hydraulic power unit, DC or AC, for single or double effect circuits, with plastic or steel tanks. Up to ten devices can be integrated into the central manifold for maximum design flexibility and circuit compactness.
- All components are single-piece pre-assembled and pre-tested cartridges: no springs, washers, poppets messing up when finally assembling the complete power pack.
- Possibility to mount integral AC and DC motor directly on the central manifold without additional flanges and couplings. With one single coupling you can mount all available integral AC motors with power ranging from 0,25 to 4 kW.
- Compact and lightweight aluminium die-casting technology (central manifold with only 1,1 kg weight).

PERFORMANCE

- The gear pumps are manufactured with pressure balanced compensation plates. This technology reduces the mechanical clearings at the pressure increase, thus greatly improving the hydraulic efficiency, reducing heat generation and consumption.
- The integral motors are designed and their electric performance optimized for typical mini power pack applications (high starting torque, high power density).
- The central aluminium manifold guarantee leakage-free operation during the life span of the product.
- The functional components are made with hardened steel parts for best reliability and long life.

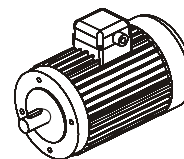
MARKET COMPATIBILITY

- Our sales policy includes the possibility to supply power packs in kit of loose parts, in order to offer assembling flexibility to local distributors and simplify worldwide spare parts procurement and post-sale service.
- Tanks with $\varnothing 123$ mm flange with two different bolts attachments can be fitted.
- Gear pump group 0 and group 1 with tang drive shaft, clockwise or anticlockwise rotation, reversible or double execution (also Hi-Lo) can be mounted. Standard pumps have clockwise rotation.
- Standard B14 electric motors, clockwise or anticlockwise rotation can be mounted.
- Screw-in cartridge valves are fitted in $\frac{3}{4}$ -16UNF-2B standard cavities.
- The main relief valve is fitted in a M20x1,5 standard cavity.
- Compensated flow regulators on the fluid return lines are fitted in standard 1/4" BSPP cavities.

QUICK SELECTION GUIDE

1: AC motors

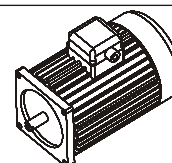
1.1: B14 AC motors (See table U040.40.08)



B14 AC motor frame size	Typical power range [kW]	Spare flange code	Spare coupling code	Mounting kit code (to be indicated in PPC code)
71	0,25 ÷ 0,37	F27010001	E36100001 + E36100006 E36100001 + E36100000	XB1471 -0 (gr.0 pumps) -1 (gr.1 pumps)
80	0,55 ÷ 0,75	F27010002	E36100002 + E36100006 E36100002 + E36100000	XB1480 -0 (gr.0 pumps) -1 (gr.1 pumps)
90	1,1 ÷ 1,5	F27010003	E36100003 + E36100000	XB1490 (only gr.1 pumps)
100/112	2,2 ÷ 7,5	F27010004	E36100004 + E36100000	XB14100 (only gr.1 pumps)

PPC for B14 motors are normally supplied with mounting kit only. The motor is at customer care.

1.2: AC integral motors three-phase (See tables U040.40.07)



Integral AC motor frame size	Maximum Power (S3 40%)		Rated Power (S1 continuous duty)		Spare motor code	Spare coupling code (only for spare parts orders)
	kW	HP	kW	HP		
Three-phase 4 poles (~1450 rpm at 50Hz)						
71	-	-	0,25	0,35	E025AC341	E36100006 (gr.0 pumps) E36100000 (gr.1 pumps)
	-	-	0,37	0,5	E037AC341	
	-	-	0,55	0,75	E055AC341	
	0,75	1	-	-	E075AC341S3	
80	0,75	1	0,55	0,75	E075AC342S3	
	1,1	1,5	0,75	1	E110AC342S3	
90	1,5	2	1,1	1,5	E150AC343S3	
	2,2	3	1,5	2	E220AC343S3	
	3	4	2,2	3	E300AC343S3	

Three-phase 2 poles (~2900 rpm at 50Hz)						
Integral AC motor frame size	Maximum Power (S3 40%)		Rated Power (S1 continuous duty)		Spare motor code	Spare coupling code (only for spare parts orders)
	kW	HP	kW	HP		
71	-	-	0,37	0,5	E037AC321	E36100006 (gr.0 pumps) E36100000 (gr.1 pumps)
	-	-	0,55	0,75	E055AC321	
80	1,1	1,5	0,75	1	E110AC322S3	
	1,5	2	1,1	1,5	E150AC322S3	
	2,2	3	1,5	2	E220AC322S3	
90	3	4	2,2	3	E300AC323S3	
	4	5,4	3	4	E400AC323S3	

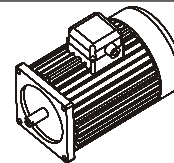
Other power / frame sizes and special motor types are available on request. Motors with codes ending with "S3" are for intermittent duty, S3 40% duty cycle means up to 6 switching on and off in an hour, i.e. the motors is ON for 4 min. and OFF for 6 min.

Ask to our technical office: we will offer optimised solutions for either intermittent or heavy duty applications.

In PPC code ordering code just specify the motor power and type and the pump type; the relevant coupling is provided as standard.

When ordering spare motors the coupling is not included and must be ordered separately.

1.3: AC integral motors single-phase (See tables U040.40.07)



Integral AC motor frame size	Maximum Power (S3 40%)		Rated Power (S1 continuous duty)		Spare motor code	Spare coupling code (only for spare parts orders)
	kW	HP	kW	HP		
Single-phase 4 poles (~1450 rpm at 50Hz)						
71	-	-	0,25	0,35	E025ACS41	E36100006 (gr.0 pumps) E36100000 (gr.1 pumps)
	-	-	0,37	0,5	E037ACS41	
80	0,55	0,75	0,37	0,55	E055ACS42S3	
	0,75	1	0,55	0,75	E075ACS42S3	
90	1,1	1,5	-	-	E110ACS43S3	
	1,5	2	1,1	1,5	E150ACS43S3	
	2,2	3	1,5	2	E220ACS43S3	
Single-phase 2 poles (~2900 rpm at 50Hz)						
71	-	-	0,37	0,5	E037ACS21	E36100006 (gr.0 pumps) E36100000 (gr.1 pumps)
	-	-	0,55	0,75	E055ACS21	
80	0,75	1	0,55	0,75	E075ACS22S3	
	1,1	1,5	0,75	1	E110ACS22S3	
	1,5	2	1,1	1,5	E150ACS22S3	
90	1,5	2	-	-	E150ACS23S3	
	2,2	3	1,5	2	E220ACS23S3	

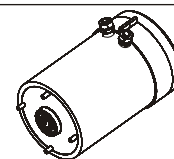
Other power / frame sizes and special motor types are available on request. Motors with codes ending with "S3" are for intermittent duty. S3 40% duty cycle means up to 6 switching on and off in an hour, i.e. the motors is ON for 4 min. and OFF for 6 min.

Ask to our technical office: we will offer optimised solutions for either intermittent or heavy duty applications.

In PPC code ordering code just specify the motor power and type and the pump type; the relevant coupling is provided as standard.

When ordering spare motors the coupling is not included and must be ordered separately.

2: DC motors (See tables U040.40.01 ÷ U040.40.06)



DC motor frame size	Power kW	Voltage V DC	PPC Assembly code	PPC assembly code (with thermal protection)	Spare motor code	Spare motor code (with thermal protection)	Spare mounting kit code (only for spare parts orders)
Ø80	0,5	12	0,5 12DC	0,5 12DC/T	M46C1S005	M46C1ST05	E36200006 (gr.0 pumps) E36200002 (gr.1 pumps)
	0,5	24	0,5 24DC	0,5 24DC/T	M46C2S005	M46C1ST05	
	0,8	12	0,8 12DC	0,8 12DC/T	M46C1S008	M46C1ST08	
	0,8	24	0,8 24DC	0,8 24DC/T	M46C2S008	M46C2ST08	
Ø112	1,6	12	1,6 12DC	1,6 12DC/T	M46C1S016	M46C1ST16	E36200001 (only for gr.1 pumps)
	2,1	12	-	2,1 12DC/T	-	M46C1ST21	
	2,2	24	2,2 24DC	2,2 24DC/T	M46C2S022	M46C2ST22	
Ø125	2,4	12	-	2,4 12DC/T	-	M46C1ST24	E36200001 (only for gr.1 pumps)
	3,0	24	-	3 24DC/T	-	M46C2ST30	
Ø151	2,5	12	-	2,5HD 12DC/T	-	MB14C1ST25	XB1490
	3,0	24	-	3HD 24DC/T	-	MB14C2ST30	
	4,0	24	-	4HD 24DC/T	-	MB14C2ST40	



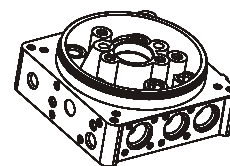
www.hydronit.com
 E-mail: sales@hydronit.com
 Fax +39 03621841214

Table U040.00.04.00

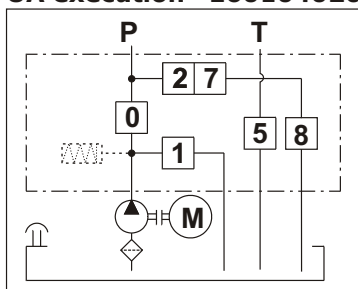
2.1: DC motor options

PPC code	Description	Spare part code	Mounting advise
/S150 12DC 80 /S150 24DC 80	Starting switch 150A 12 or 24V DC	M47SC0001+M47SK0801 M47SC0002+M47SK0801	For ø80 motors
/S150 12DC 112 /S150 24DC 112	Starting switch 150A 12 or 24V DC	M47SC0001+M47SK1121 M47SC0002+M47SK1121	For ø112 motors
/S200 12DC /S200 24DC	Starting switch 200A 12 or 24V DC	M47ZC0001 M47ZC0002	For ø125 and ø151 motors
P0201	Remote wired control with two buttons and 3m cable	P0201	For single acting cylinders
P0202	Remote wired control with two buttons and 3m cable	P0202	For double acting cylinders
F16000001	DC motors plastic cover	F16000001	For ø112 motors

3: Universal Central manifold (See section U040.10)

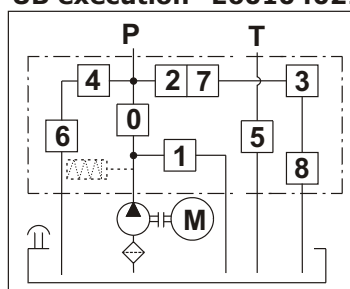


UA execution E60104020



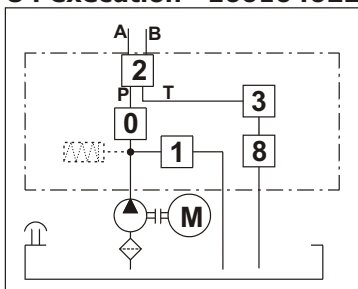
- Typical applications:
- single acting circuits;
 - double acting circuits (with cetop3 valves, banchable solenoid valve);
 - HI-LO pumps.

UB execution E60104021



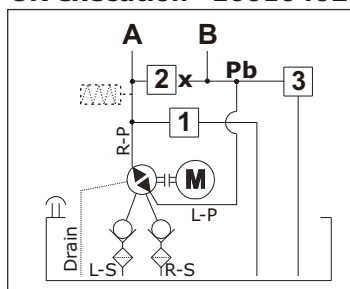
- Typical applications:
- as UA type plus;
 - integral emergency hand pump, adjustable flow control valve on return line and/or complex controls.

U4 execution E60104022



- Typical application:
- double acting circuit with integrated 4-way solenoid cartridge valve

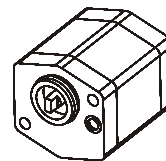
UR execution E60104023



- Typical application:
- double acting cylinder with reversible pump to the use avoid directional valve.

Central manifold codes do not include valves and other components.

4: Pumps (See tables U040.20.19 ÷ U040.20.23)



G type gear pumps

K type gear pumps

Reversible gear pumps

PPC code	Displacement (cc/rev)	Spare part code	PPC code	Displacement (cc/rev)	Spare part code	PPC code	Displacement (cc/rev)	Spare part code
G0,2	0,26	E60503002	K0,2	0,26	E60504002	R0,2	0,26	E60504502
G0,4	0,38	E60503004	K0,4	0,38	E60504004	R0,4	0,38	E60504504
G0,6	0,63	E60503006	K0,6	0,63	E60504006	R0,6	0,63	E60504506
G0,8	0,85	E60603001	K0,9	0,9	E60604001	R0,9	0,88	E60504509
G1,1	1,1	E60603002	K1,2	1,2	E60604002	-	-	-
G1,3	1,3	E60603003	-	-	-	R1,3	1,25	E60504513
G1,6	1,6	E60603035	K1,6	1,6	E60604035	R1,5	1,50	E60504515
G2,1	2,1	E60603004	K2,1	2,1	E60604004	Higher displacement available on request.		
G2,6	2,6	E60603005	K2,7	2,7	E60604005			
G3,2	3,2	E60603006	K3,2	3,3	E60604006			
G3,7	3,7	E60603007	K3,7	3,8	E60604007			
G4,2	4,2	E60603008	K4,2	4,3	E60604008			
G4,9	4,8	E60603009	K5,0	5	E60604009			
G6,0	5,8	E60603010	K6,0	6	E60604010			
G7,9	8	E60603012	K7,9	7,8	E60604012			
G9,8	9,78	E60603014						

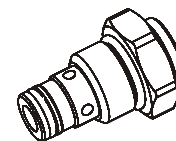
See functional characteristics on tables U040.20.18 ÷ U040.20.22
The actual pump displacements can change $\pm 5\%$ of nominal values.

Helical rotor pumps for high pressure and low noise and low pulsation applications.
Typical noise level around 50 to 55 dbA.

PPC code	Displacement (cc/rev)	Spare part code
S6,4	6,4	S60603010
S8,3	8,3	S60603012
S10	10,2	S60603014
S13	12,9	S60603016

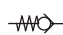

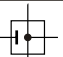
See functional characteristics on table U040.20.23

5: Integral components (See section U040.20)

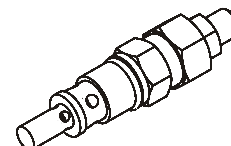


5.1: Built-in valve for cavity 0:

VUC20 is the basic check valve and it's normally mounted in cavity 0. Other valves can be fitted, like an in-line flow control CSB04C. If the check valve is not required choose L plug.

PPC code	Description	Max flow (l/min)	Max pressure (bar)	Hydraulic symbol	Spare valve code
J	3/4-16 UNF check valve	25	350		VUC20
S	3/4-16 UNF adjustable not compensated bi-directional flow control	15	300		CSB04C
L	Plug L	-	-		E70100006

5.2: Relief valves code / setting for cavity 1:

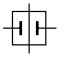
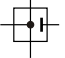
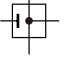
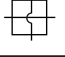
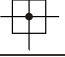


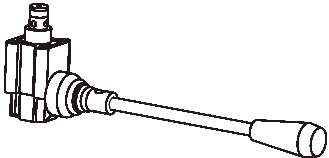
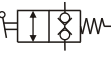
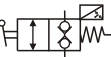
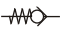



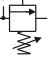
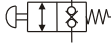
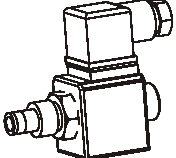
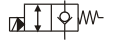
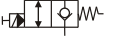
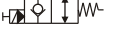




Relief valves are of direct acting type and normally supplied with screw adjustment. Hand wheel and sealing devices are available on request, too.


PPC code	Description	Max flow (l/min)	Working range (bar)	Spare valve code
D/60	Direct acting relief valve with balanced poppet	35	5 ÷ 60	VMDC35L1
D/180	Direct acting relief valve with balanced poppet	35	10 ÷ 180	VMDC35A1
D/280	Direct acting relief valve with balanced poppet	35	35 ÷ 280	VMDC35B1
X	No relief valve, open port	-	-	-
XP	No relief valve, plug	-	-	E70100010

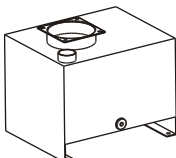
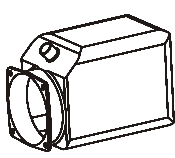
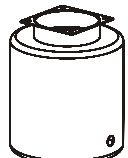
5.3: Built-in plugs for cavities 2 / 3 / 4:



PPC code	Description	Max flow (l/min)	Max pressure (bar)	Hydraulic symbol	Mounting cavity	Spare plug code
G	Plug G	-	-		2 - 3 - 4	E70100005
H	Plug H: 1/4" BSPP outlet port	-	-		2 - 3 - 4	E70100003
L	Plug L	-	-		0 - 2 - 3 - 4	E70100006
P	Plug P	-	-		0 - 2 - 3 - 4	E70100004
N	Plug N	-	-		0 - 2 - 3 - 4	E70100002

5.3: Built-in valves for cavities 2 / 3 / 4:						
						
PPC code	Description	Max flow (l/min)	Max pressure (bar)	Hydraulic symbol	Mounting cavity	
E	CM04L: lever operated valve	25	300		2 - 4	
EM	CM04M: lever operated valve with micro-switch	25	300		2 - 4	
J	VUC20: 3/4-16 UNF check valve	25	350		0 - 2 - 3 - 4	
R*	VCF6: 3/4-16 UNF adjustable pressure compensated uni-directional flow control	1÷18,5	350		3	
S	CSB04C: 3/4-16 UNF adjustable not compensated bi-directional flow control	15	300		2 - 3 - 4	
U	PMC02L: 3/4-16 UNF 2cc/stroke single acting hand pump	-	200		2 - 4	
V***	VMDC20/***: 3/4-16 UNF relief valve (where *** is the max settable pressure)	20	350		3	
Z	CPE04P: 2 way / 2 position hand operated NC double locking valve	25	300		0 - 2 - 3 - 4	
5.4: Built-in solenoid and proportional valves /voltage for cavities 2 / 3 / 4:						
						
PPC code	Description	Flow (l/min)	Pressure (bar)	Standard coils and voltages	Hydraulic symbol	Mounting cavity
A	MSV30: 2 way / 2 position solenoid normally closed valve	20	210	12, 24 DC 115/50, 230/50AC		2 - 4
B	MSV30E: 2 way / 2 position solenoid normally closed valve with emergency	20	210	12, 24 DC 115/50 AC, 230/50 AC		2 - 4
C	MSV31E: 2 way / 2 position solenoid normally open valve with emergency	20	210	12, 24 DC 115/50 AC, 230/50 AC		2 - 4
D	MDV30E: 2 way / 2 position solenoid normally closed double locking valve	20	210	12, 24 DC 115/50 AC, 230/50 AC		2 - 3 - 4
P***	VMPC2: direct acting proportional relief valve	2	350	12, 24DC		3
T***	CSPC15: proportional flow control valve	15	210	12, 24DC		2 - 4
4V**	MSV4V: direct operated 4/3 or 4/2 directional spool solenoid valve	20	210	12, 24 DC 115/50 AC, 230/50 AC		2

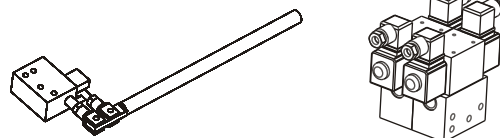
5.5: Return line pressure compensated fixed flow control valves for cavities 5 / 6 / 7 / 8: 				
Please specify for each cavity the required nominal flow control adjustment: (l/min). Effective flow can be different depending on working conditions. See tables U040.20.05 and U040.20.06.				
PPC code	Description	Spare valve code	Max flow (l/min)/ pressure (bar)	Mounting cavity
0 / 1 / 2 / 3 / 4 / 5 / 6 / 8 / 10 / 12 / 15	BSPB 1/4"	VSC01*	15 / 250	5 - 6 - 8
0 / 1 / 2 / 3 / 4 / 5 / 6 / 8 / 10 / 12 / 15	Ø12,7 with o-ring	VSC04**	15 / 250	7
X	No flow control	-	-	-

6: Oil tanks (See section U040.50)   		
Choose tank volume, type and mounting style.		
PPC code	Description	Spare tank code, inclusive of plugs and filler/breather
Steel tanks		
1,5A / 1,5AV	1,5l, cylindrical, horizontal / vertical mounting	E60303001
2,5A / 2,5AV	2,5l, cylindrical, horizontal / vertical mounting	E60303004
5B / 5BV	5l, cylindrical, horizontal / vertical mounting	E60303006
10B / 10BV	10l, cylindrical, horizontal / vertical mounting	E60303011
12B / 12BV	12l, cylindrical, horizontal / vertical mounting	E60303012
10C / 10CV	10l, square, horizontal / vertical mounting	E60303042
22C / 22CV	22l, square, horizontal / vertical mounting	E60303044
8EV	8l, square, vertical mounting	E60303041
15EV	15l, square, vertical mounting	E60303014
20EV	20l, square, vertical mounting	E60303015
30EV	30l, square, vertical mounting	E60303048
Plastic tanks		
1,5L / 1,5LV	1,5l, square 170x140, horizontal / vertical mounting	H60303016
3L / 3LV	3l, square 170x140, horizontal / vertical mounting	H60303018
6L / 6LV	5l, square 170x140, horizontal / vertical mounting	H60303020
5M / 5MV	5l, square 170x170, horizontal / vertical mounting	H60303025
8M / 8MV	8l, square 170x170, horizontal / vertical mounting	H60303033
<p>Filler / breather port and drain plug, graduated oil level (20EV, 30EV square steel tanks only), standard suction filter, inlet pipe, outlet pipe, stainless steel clamp, depending on code, are included in the standard assembly when ordering assembled PPC. When ordering spare tanks, only basic plugs and filler / breather and graduated oil level (20EV, 30EV tanks only) are included; fixing kits, piping and filters are to be ordered separately. When choosing units without tank, specify X in PPC code. In this case the inlet - outlet piping kit and filter are not supplied. A steel tank adapter to be welded on custom made reservoirs can be supplied; in this case specify code F80000001 in place of tank code.</p>		

7: External manifolds and additional components

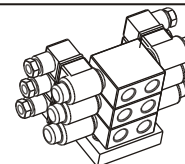
Many options and additional components are available to customise PPC units for any application. They must be added at the end of PPC code. The three different manifold fixing systems (2xM8, 3xM6, 4xM6) can not be mixed among them.

7.1: Modular external manifolds (See section U040.30) 2 x M8 tie-rods fixing system

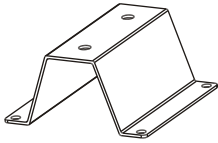
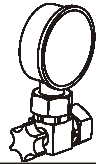


PPC & spare parts code	Description	See technical table
E60403004	28mm spacer sub-plate	U040.30.10
E60403005	90° rotation manifold	
E60403001	Cetop3 parallel manifold with rear ports	U040.30.01
E60403010	Cetop3 parallel manifold with lateral ports	
E60403011	Cetop3 serial manifold with lateral ports	
E60413001	Cetop3 manifold with piloted check valve on A and B port	U040.30.02
E60413002	Cetop3 manifold with piloted check valve on A port	
E60413003	Cetop3 manifold with piloted check valve on B port	
HD03****	Cetop3 directional manual valves	U040.30.06
SD03****	Cetop3 directional solenoid valves	U040.30.05
E60433001	Cetop3 sandwich flow control valve on A and B port	U040.30.04
E60433002	Cetop3 sandwich flow control valve on A port	
E60433003	Cetop3 sandwich flow control valve on B port	
E60423001	Cetop3 sandwich relief valve on A and B port	U040.30.03
E60423002	Cetop3 sandwich relief valve on A port	
E60423003	Cetop3 sandwich relief valve on B port	
E60403020	Modular manifold with return filter on T line	U040.30.13
E60403027	Modular manifold with pilot check valves	U040.30.09
E60403028	Modular manifold with check valve A -> T piloting	
PM060000	PM06 hand pump modular manifold	U040.30.08

7.2: Stackable external directional control valves (See section U040.30) 3 x M6 tie-rods fixing system



PPC & spare parts code	Description	See technical table
E60403006	Mounting manifold for stackable directional directional valves	U040.30.07
SD01****	Stackable directional solenoid valves	

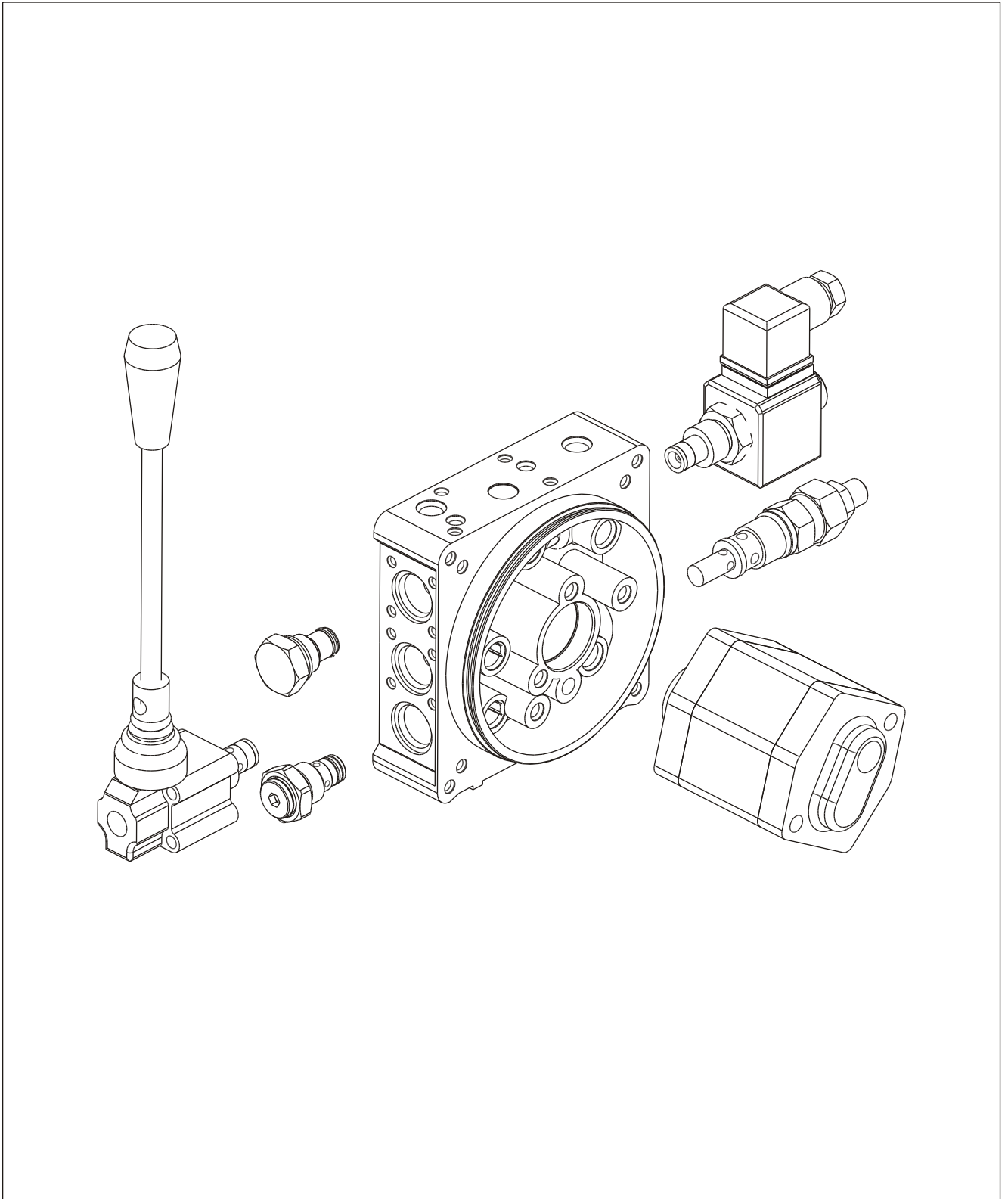
7.3: Modular external manifolds (See section U040.30) 4 x M6 tie-rods fixing system		
PPC & spare parts code	Description	See technical table
E60403031	Modular manifolds for 3/4-16 UNF three way cartridges	U040.30.11
E60403030	Modular manifolds for 3/4-16 UNF two way cartridges	
MSV3V	Direct operated 3/2 way directional spool solenoid valve	U040.30.12
7.4: Additional components and accessories (See section U040.30)		
		 
PPC & spare parts code	Description	See technical table
E60543006	Steel foot mounting support	U040.30.14
E60543007	Tall steel foot mounting support	
EM9001C	90° gauge isolator F-F	U040.30.14
EMIL01C	In line gauge isolator F-F	
MIR63***	Pressure gauge Ø 63	
F401***	Pressure switch 1/4"BSPP	
BFCSAE0802	In line mounting 3/4-16 UNF manifold 3/8"BSPP	
BFCSAE0801	In line mounting 3/4-16 UNF manifold 1/4"BSPP	
MIR40***	Pressure gauge Ø 40	U040.30.13
C43200001	Return filter	U040.50.07
SUV	Start up valve for single phase motors	U040.40.07a

COMMISSIONING BRIEF INFORMATION

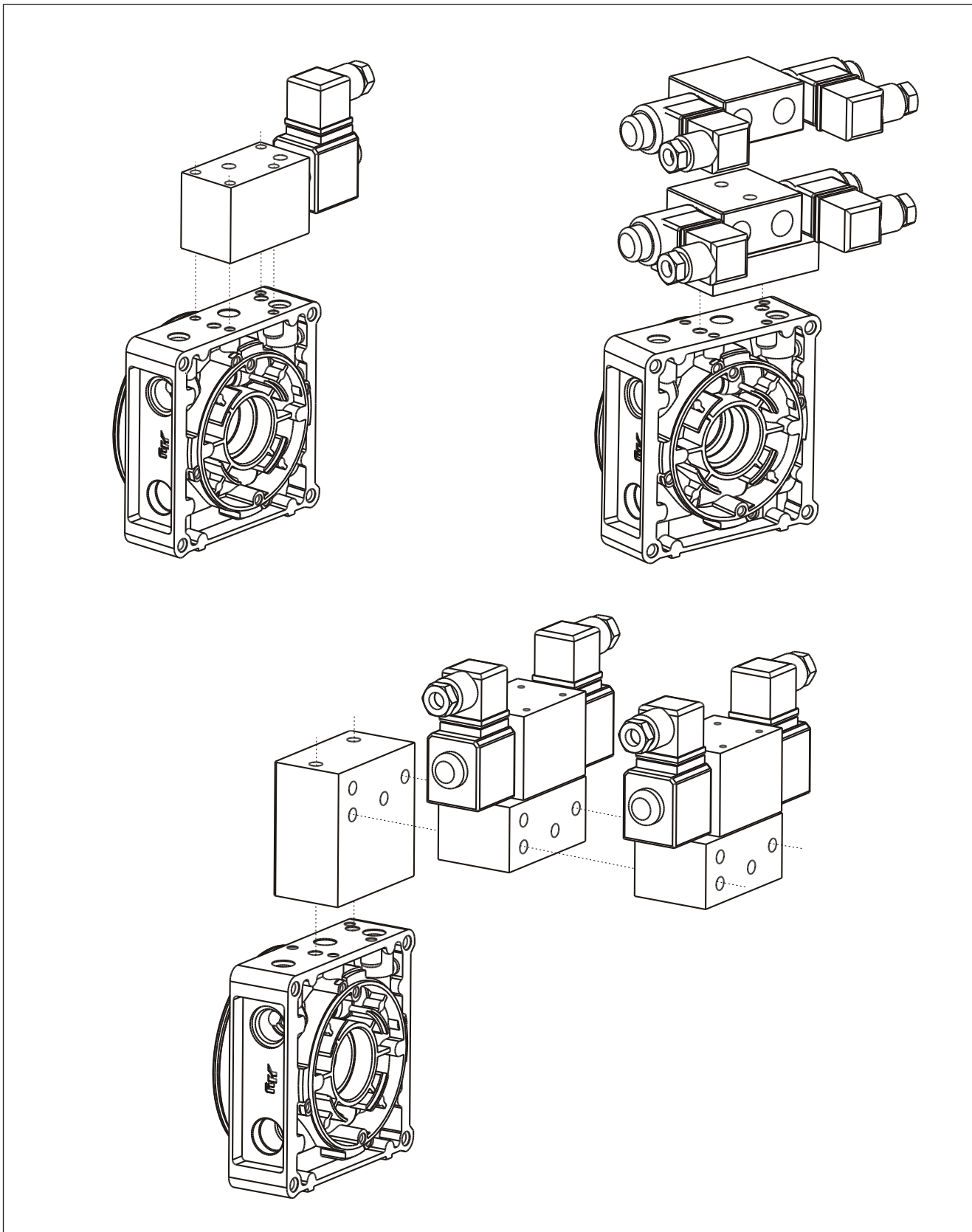
Installation position	Any
Ambient temperature	-15 ÷ +50°C
Hydraulic fluid	Hydraulic oil ISO 6743/4 / DIN 51519, viscosity 15 ÷ 100 mm ² /s ISO 3448 (recommended viscosity 22÷46 mm ² /s)
Fluid temperature	-10° ÷ +70°C unless otherwise stated
Contamination degree	Must be higher than class 18/14 ISO 4406
Instructions	<ul style="list-style-type: none"> - After having connected the electric motor and the hydraulic piping, check the pump rotation with short bursts of 1÷2 sec. For standard pumps motor rotation must be clockwise looking from motor fan side. Never reverse rotation. - Bleed the hydraulic installation and flush the circuit in order to remove eventual impurities - Check the hydraulic fluid level and, if necessary, fill-up to maximum. - To ensure proper working and long life, check the hydraulic fluid and replace it after first 100h and then every 3000h operation and/or at least every year.
Threads recommended tightening torque	M5: 4÷5,5 Nm, M6: 8÷10 Nm, M8: 16÷20 Nm, M8 pump: 21÷25 Nm, M10: 30÷40 Nm, 1/4" BSPP: 6÷20 Nm, 3/4-16 UNF valves: 15÷40 Nm, M20x1,5 relief valve: 50 Nm.

Section 20

INTEGRAL COMPONENTS AND PUMPS



Section 30 ADDITIONAL MANIFOLDS AND COMPONENTS



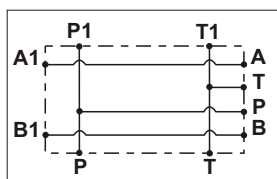


www.hydronit.com
E-mail: sales@hydronit.com
Fax +39 03621841214

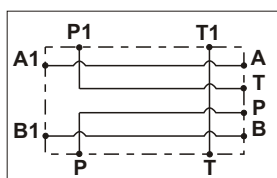
Table U040.30.01.00

Cetop 3 modular manifolds

Rear ports	Lateral ports
<p>Weight: 0,37 kg Fixing system: 2xM8 tie-rods steel class 8.8 or above</p>	<p>Weight: 0,56 kg Fixing system: 2xM8 tie-rods steel class 8.8 or above</p>



<i>Parallel connection</i>	Spare part code
Rear ports	E60403001
Lateral ports	E60403010



<i>Serial connection</i>	Spare part code
Lateral ports	E60403011

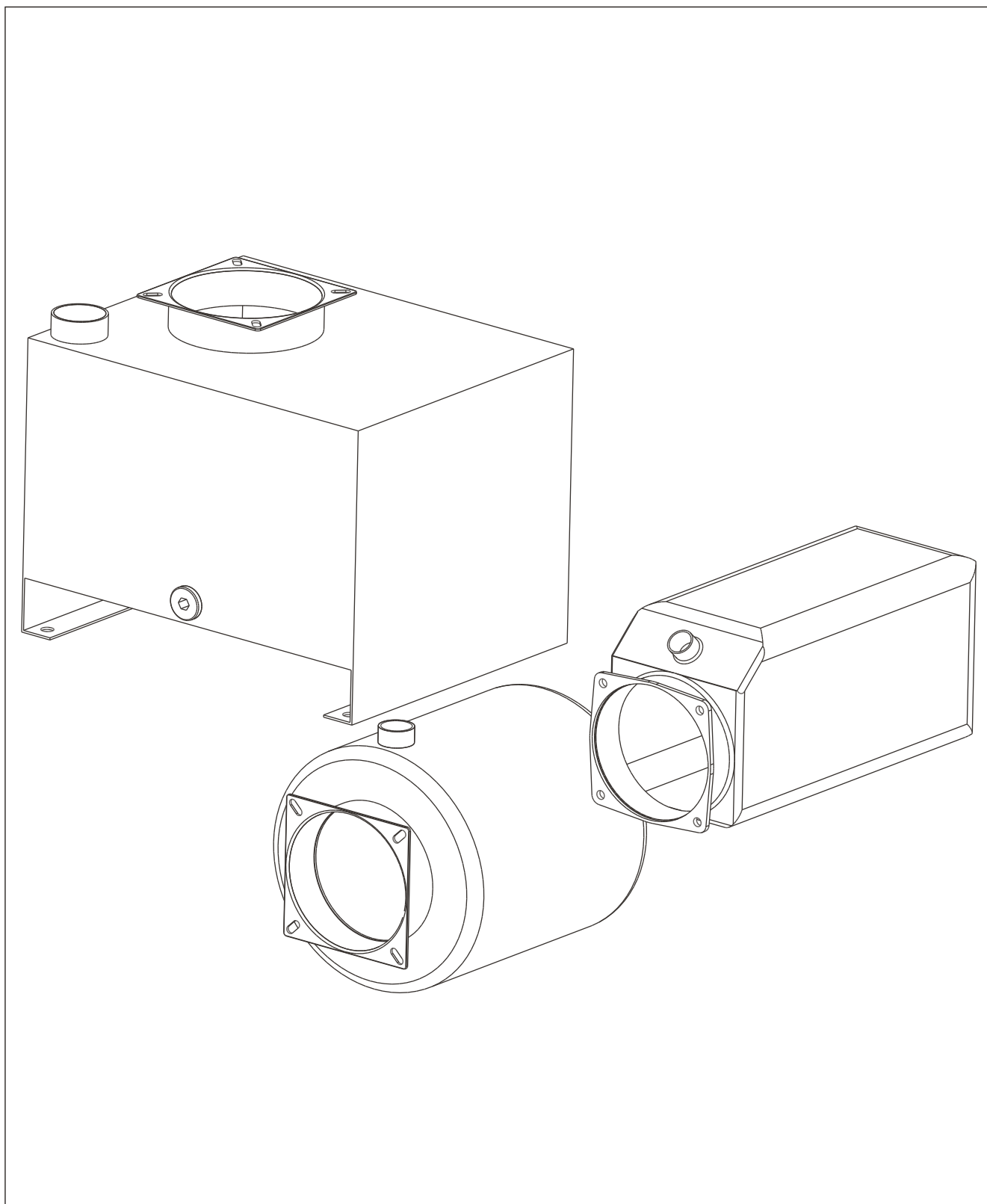
Note: to add external manifolds to PPC assembly code, just add their spare part codes at the end of PPC code. Ex: PPC-0,8 12DC-UA-J-G1,1-D/280-G-1,5L+E60403004+E60403010

The Cetop attachment is on motor side. With AC motor frames bigger than 71, always add a spacer manifold E60403004 (see next page) below the Cetop manifold to avoid interference between the Cetop valve and the motor.

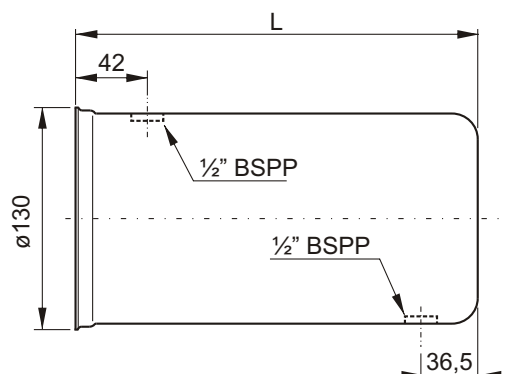
Recommended tightening torque for M8 bolts: 16 Nm

Section 50

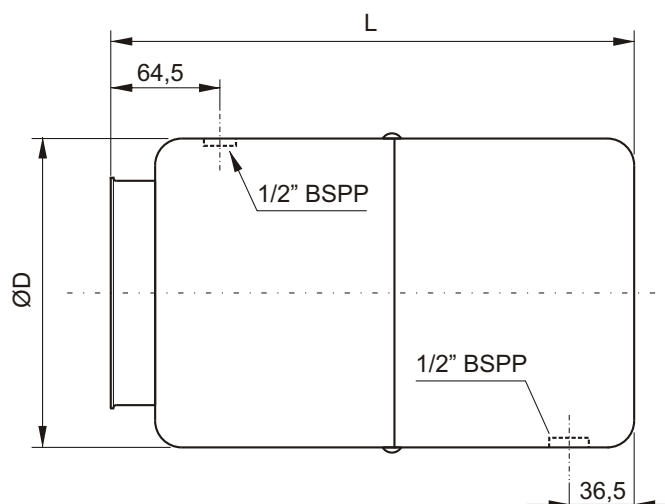
TANKS AND ACCESSORIES



Round steel tanks A & B series



Description	PPC assembly code	Spare part code	L (mm)	Weight	Actual filling volume (lt)	
					Horizontal	Vertical
1,5 l cylindrical horizontal / vertical mounting	1,5A / 1,5AV	E60303001	150	0,78 Kg	1,6	1,5
2,5 l cylindrical horizontal / vertical mounting	2,5A / 2,5AV	E60303004	235	1,04 Kg	2,8	2,4



Description	PPC assembly code	Spare part code	L (mm)	ØD (mm)	Weight	Actual filling volume (lt)	
						Horiz.	Vert.
5 l cylindrical horizontal / vertical mounting	5B / 5BV	E60303006	300	180	1,82 Kg	5,3	5,3
10 l cylindrical horizontal / vertical mounting	10B / 10BV	E60303011	262	220	2,01 Kg	10,4	10,3
12 l cylindrical horizontal / vertical mounting	12B / 12BV	E60303012	295	240	2,47 Kg	13,5	13,5

All measures are indicative in mm

Material	Fe P04-EN10130 steel sheet 1,5mm thickness
Fluid	Mineral based oil ISO/DIN 6743/4
Working temperature	-15 / +70°C

Note: the piping kit, standard suction filter, filler/breather and discharge plug are included when specifying the tank in PPC assembly code. When ordering spare parts, only the discharge plug and filler/breather are included. See accessories tables U040.50.06-07