

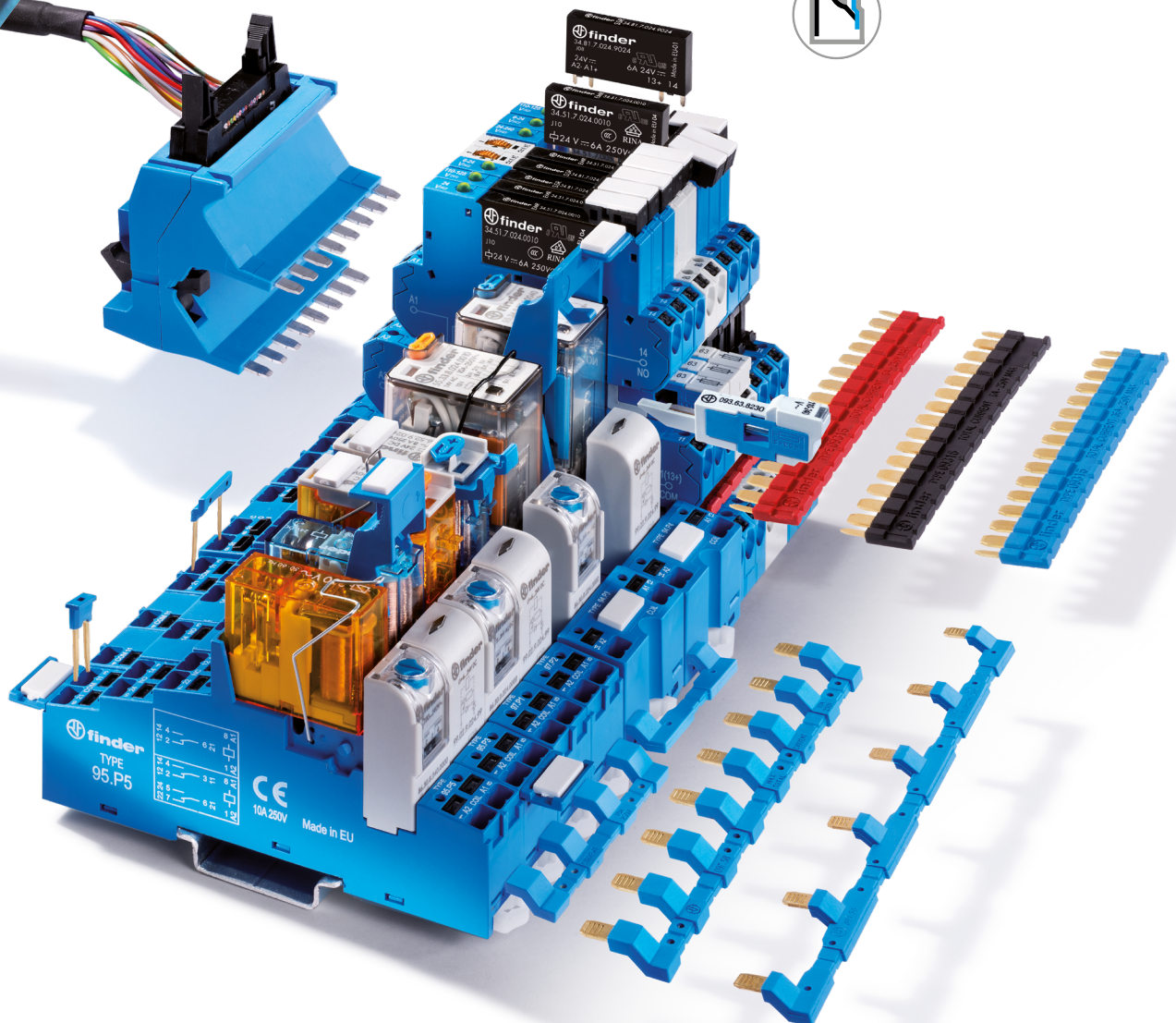
# MasterIN System



**finder**<sup>®</sup>

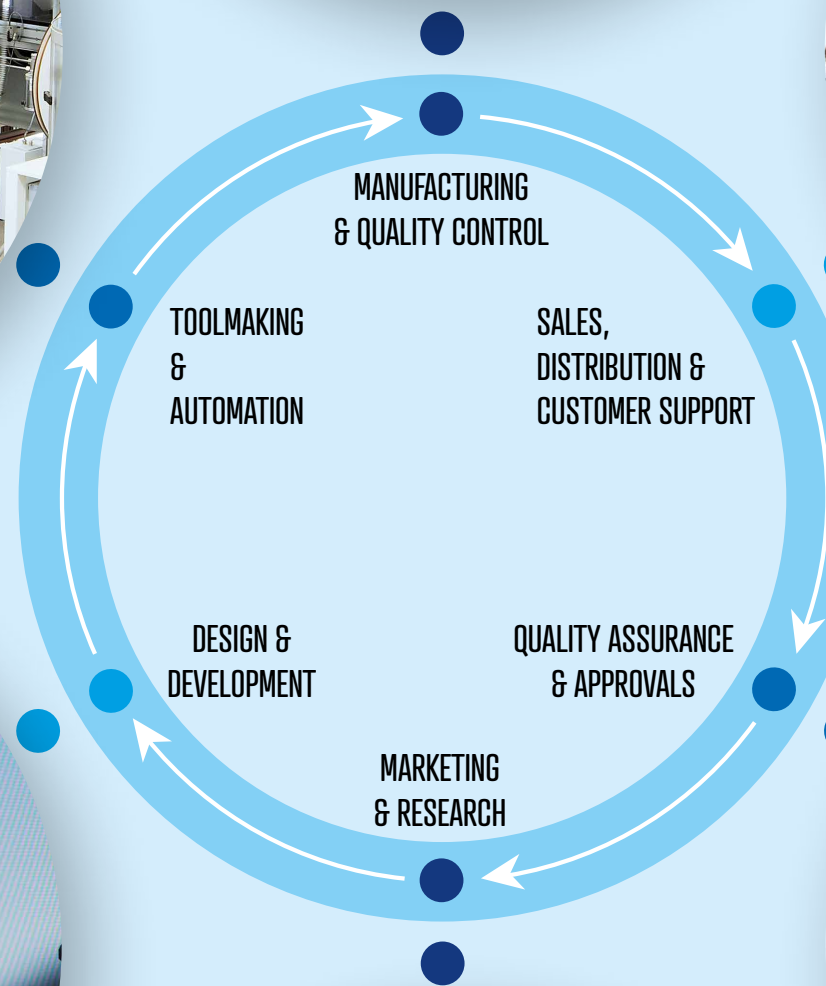
SWITCH TO THE FUTURE

Modular Interface  
with Push-in technology





Since 1954  
Our passion





**Finder has been making electromechanical relays in Europe since 1954, and has the widest range of quality approvals of any relay manufacturer.**

Finder produces relays, timers and a wide range of electromechanical and electronic products for industrial, residential and commercial applications. Quality, innovation, continuous research and state-of-the-art manufacturing. These are the engines driving Finder's global success. Thanks to an international sales network of 22 subsidiaries and more than 80 exclusive distributors worldwide, Finder exports its products all over the world.





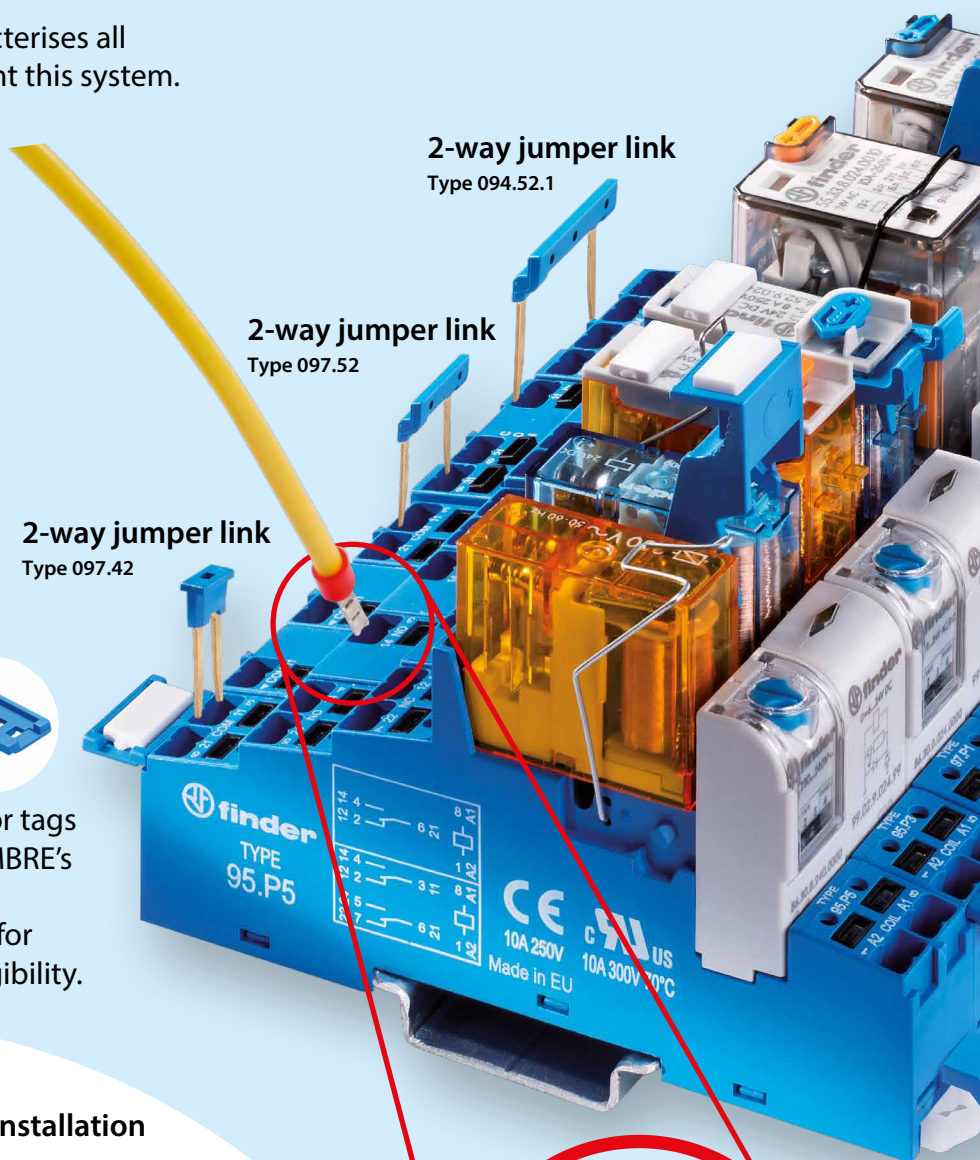
# MasterIN System

## Relay interface modules

### The most complete range of accessories

High speed wiring thanks to terminals with rapid Push-in Technology.

Versatility and easy integration characterises all the latest accessories that complement this system.



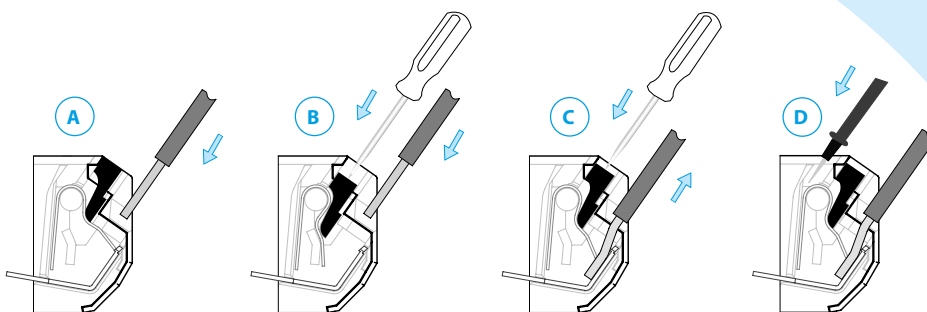
#### Marker tag holder

Type 097.00

The marker tag holder – for tags that can be used with CEMBRE's thermal transfer printers – has also been redesigned for improved visibility and legibility.



#### Extremely simple, fast and secure installation



Push-in  
connection



The **Push-in terminals** permit the quick connection of solid wires or ferrules by their simple insertion into the terminal. It is possible to open the terminal to extract the wire by first pushing down on the push-button using a screwdriver or fingers.

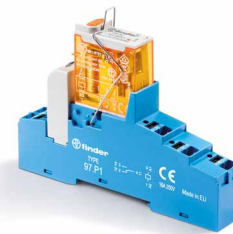
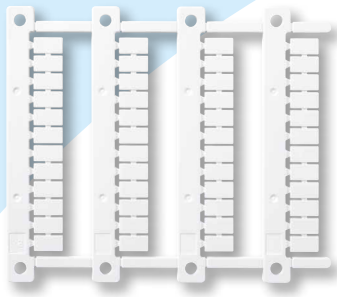
For stranded cable it is necessary first to open the terminal using the push button, both for the extraction and insertion.



### Marker tag

Type 060.48

For CEMBRE's  
thermal transfer printers



## 4C Series

Type 4C.P1: 1 CO 10 A 250 V AC1

Type 4C.P2: 2 CO 8 A 250 V AC1



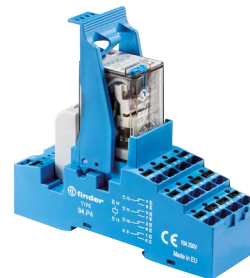
## 48 Series

Type 48.P3: 1 CO 10 A 250 V AC1

Type 48.P5: 2 CO 8 A 250 V AC1

Type 48.P6: 1 CO 16 A 250 V AC1

Type 48.P8: 2 CO 10 A 250 V AC1



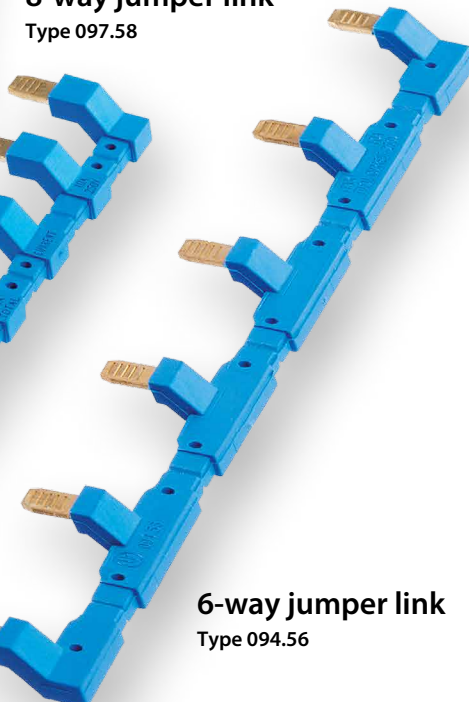
## 58 Series

Type 58.P3: 3 CO 10 A 250 V AC1

Type 58.P4: 4 CO 7 A 250 V AC1

### 8-way jumper link

Type 097.58



### 6-way jumper link

Type 094.56

Fast and easy connection with jumper links - able to interconnect between different types of interface modules.

- AC coils & DC coils
- Nominal voltage: 12 - 24 - 110 - 125 V DC  
12 - 24 - 110 - 230 V AC
- Supply status indication and EMC coil suppression module
- Available with instant ejection of relay using plastic retaining clip (packaging code SPA) or with metal retaining clip (packaging code SMA)
- 35 mm rail mounting (EN 60715)

# MasterIN System

## Relay interface module

### Ultra-thin, simple and versatile

The 39 Series with a width of just 6.2 mm is the space-saving solution offering the greatest number of permutations of sockets and accessories.

#### MasterADAPTER

Type 093.68.14.1

The **MasterADAPTER** permits the easy connection of A1/A2 terminals of up to 8 **MasterINTERFACE** modules to PLC outputs via a 14-Pole cable, plus simple 2-wire power supply connection.



Type 093.60

#### Dual-purpose plastic separator 1.8 mm or 6.2 mm separation

By breaking off the protruding ribs (by hand), the separator becomes only 1.8 mm thick; leaving the ribs in place provides 6.2mm separation. Useful for the visual separation of different groups of interfaces, or necessary for the protective separation of different voltages of neighbouring interfaces, or for the protection of cut ends of jumper links. Permits the interconnection across the separator of 2 different groups of interface relays, using the standard jumper link.

Push-in  
connection



1.8 mm

6.2 mm



### Output fuse module

- For 5 x 20 mm fuses up to 6 A 250 V
- Easy visibility of the fuse condition through the window
- Quick connection to socket



Type 093.63



### Output fuse module with LED status indicator

Type 093.63.0.024

Type 093.63.8.230

## 39 Series

### MasterPlus

Type 39.61 (EMR)

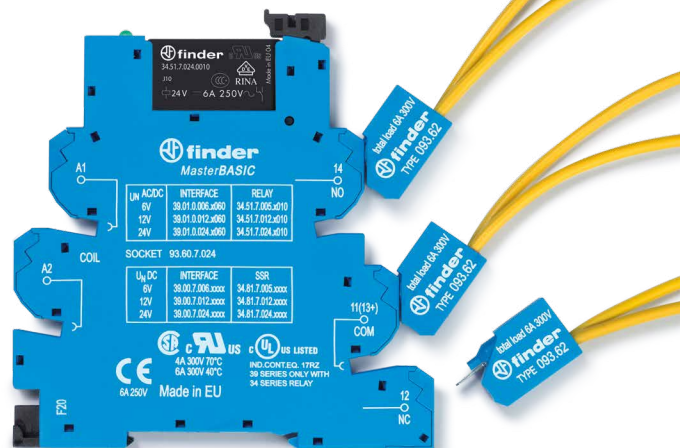
Type 39.60 (SSR)

- DC coils & AC coil
- Nominal voltage from 6 to 125 V AC/DC; 230 V AC
- Also available in multivoltage versions covering 24 to 240 V AC/DC
- Nominal contact rating:
  - 1 CO 6 A (EMR)
  - 1 NO up to 6 A (SSR) – 250 V AC1
- 35 mm rail (EN 60715) mounting

### Terminal Doubler

Type 093.62

Fits all sockets with 39 Series Push-in technology.



### 16-way jumper link

Type 093.16.1

Type 093.16.0

Possibility to serially "chain" jumper links

Type 093.16

Finder in the world



Discover the worldwide network at [findernet.com](http://findernet.com)



**FINDER RELAYS, INC** 4191 Capital View Drive, Suwanee, GA 30024 U.S.A. Tel.: (770) 271-4431 Fax (770) 271-7530 [sales@finder-us.com](mailto:sales@finder-us.com)

[finder-us.com](http://finder-us.com)



FINDER reserves the right to alter characteristics at any time without notice. FINDER assumes no liability for damage to person or property, caused as a result of the incorrect use or application of its products.

October 2017 - Masterlink System - Online updates