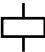






7F20-3100
7F02-3000

7F.2x.x.xxx.3100		
	U _N 110...120 V AC (50/60 Hz) (8.120)	
	U _N 230...240 V AC (50/60 Hz) (8.230)	
	U _N 24 V DC (9.024)	
	P _N 28 W (AC) / 7 W (DC)	
OUT	m ³ /h	100
	m ³ /h (+ 7F.02)	75
	dB (A)	42 (AC) 46 (DC)
	(-15...+55)°C	
IP54		
		
For Use on a Flat Surface of a Type 1, 12 Enclosure		
Use copper conductor only, 90°C min		
Conductor size 14-18 AWG		
Surrounding air temperature 55°C		

1

1a

AC

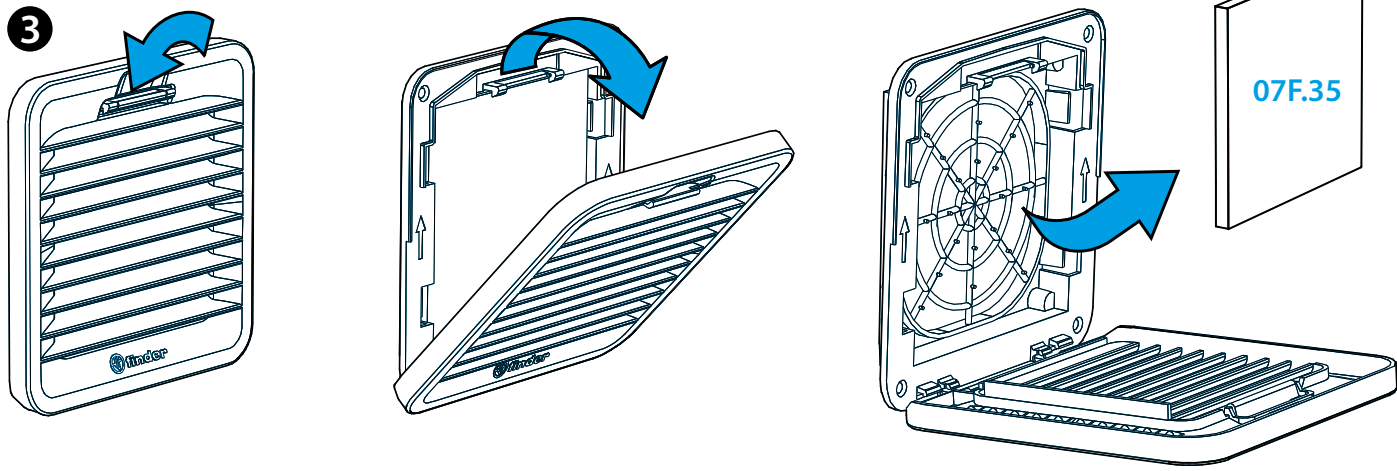
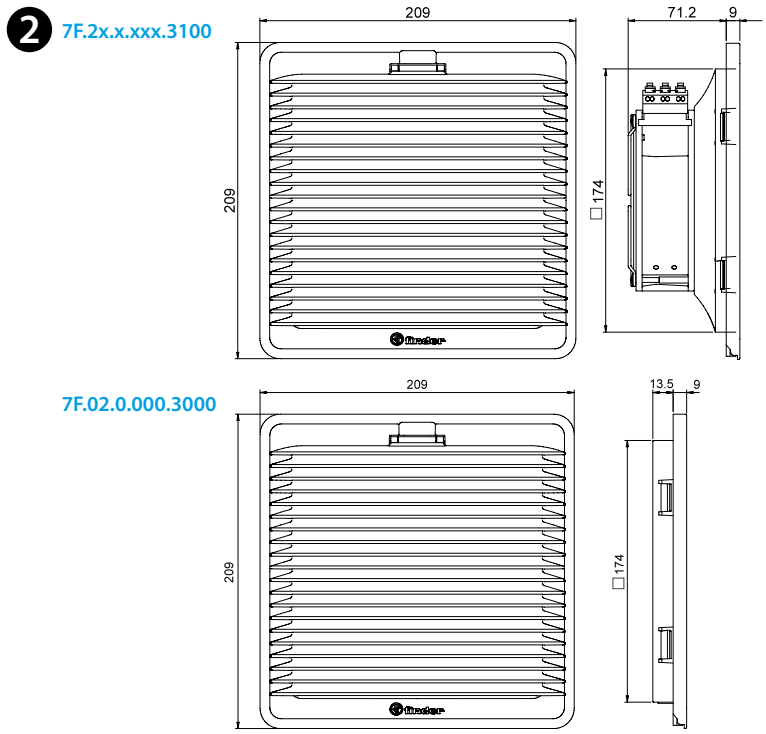
1b

DC

0.75...2.5 mm²

18...14 AWG

9mm



ENGLISH

7F.20 FILTER FAN
7F.21 FILTER FAN WITH REVERSE FLOW FILTER

- 1a WIRING DIAGRAM AC
1b WIRING DIAGRAM DC
- 2 OUTLINE DRAWING (mm)
7F.2x.x.xxx.3100 Fan
7F.02.0.000.3000 Grid
- 3 GRID OPENING - FILTER REPLACEMENT
Filter mat 07F.35
Filter mat class
EU3 according to DIN 24185, filtering degree (80...90)%
Filter material
Synthetic fibre with progressive construction, temperature resistant to 100°C, self extinguishing, Class F1 (DIN 53438)
- 4 MOUNTING (example)
The installation with the only clips is optimized for 1.5 mm thick sheets; it is also possible with thicknesses from 1 to 2.5 mm.
Fixing with screws (supplied) is recommended.
Tightening torque 0.3 Nm.