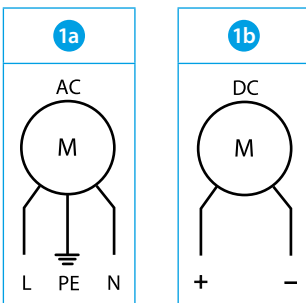




7F20-2055
7F02-2000

7F.2x.x.xxx.2055	
	U _N 110...120 V AC (50/60 Hz) (8.120)
	U _N 230...240 V AC (50/60 Hz) (8.230)
	U _N 24 V DC (9.024)
	P _N 28 W (AC) / 7 W (DC)
OUT	m ³ /h
	55
	m ³ /h (+ 7F.02)
	40
	dB (A)
	42 (AC) 46 (DC)
(-15...+55)°C	
IP54	
For Use on a Flat Surface of a Type 1, 12 Enclosure	
Use copper conductor only, 90°C min	
Conductor size 14-18 AWG	
Surrounding air temperature 55°C	

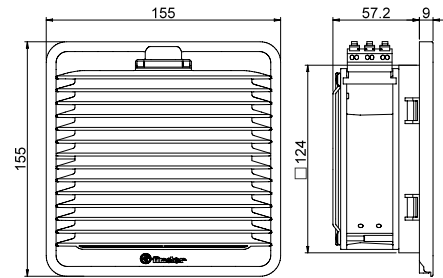
1



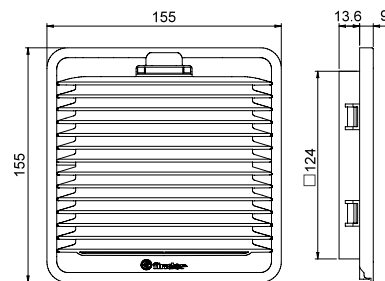
	0.75...2.5 mm ²
	18...14 AWG

2

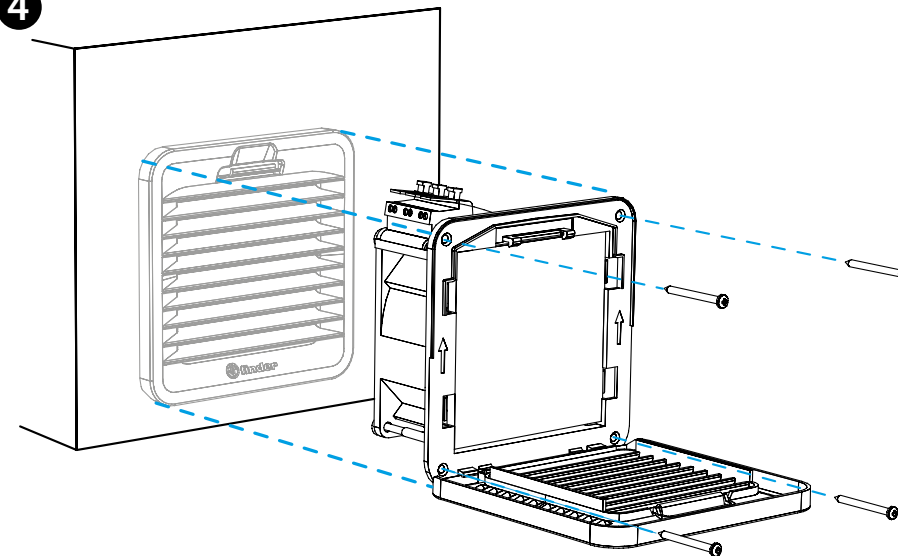
7F.2x.x.xxx.2055



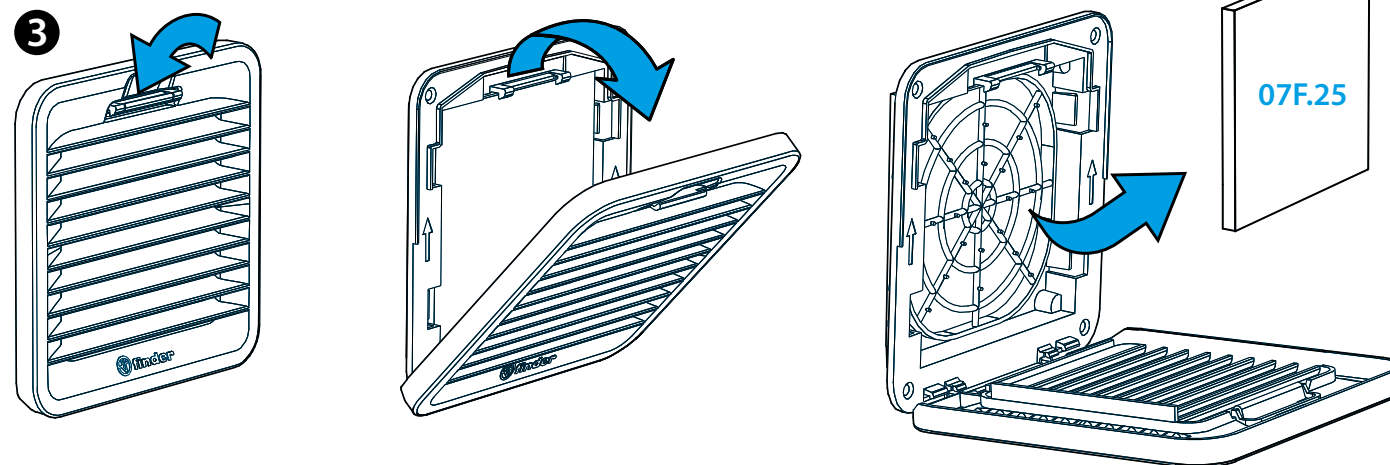
7F.02.0.000.2000



4



3



ENGLISH

7F.20 FILTER FAN

7F.21 FILTER FAN WITH REVERSE FLOW FILTER

- 1 1a WIRING DIAGRAM AC
1b WIRING DIAGRAM DC

- 2 OUTLINE DRAWING (mm)
7F.2x.x.xxx.2055 Fan
7F.02.0.000.2000 Grid

- 3 GRID OPENING - FILTER REPLACEMENT

Filter mat 07F.25

Filter mat class

EU3 according to DIN 24185, filtering degree (80...90)%

Filter material

Synthetic fibre with progressive construction, temperature resistant to 100°C, self extinguishing, Class F1 (DIN 53438)

- 4 MOUNTING (example)

The installation with the only clips is optimized for 1.5 mm thick sheets; it is also possible with thicknesses from 1 to 2.5 mm.

Fixing with screws (supplied) is recommended.

Tightening torque 0.3 Nm.