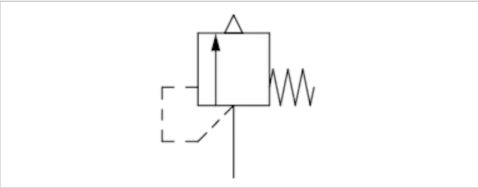


系列 RV1

- Qn 1►2 = 676-33505 l/min
- 可旋紧
- 外螺纹
- G 1/4 G 3/8 G 1/2 G 3/4
- 未收集



结构特点
 合格证书
 工作压力范围
 阀门的开启压力
 最低 / 最高环境温度
 介质

提动阀
 CE认证
 0 ... 20 bar
 见下表
 -20 ... 100 °C
 压缩空气

技术数据

| 物料号 | 接口1 | 阀门的开启压力 | 流量 |
|------------|-------|---------|------------|
| | | | Qn 1►2 |
| R412007521 | G 1/4 | 0.8 bar | 676 l/min |
| R412007522 | G 1/4 | 1.5 bar | 996 l/min |
| R412007523 | G 1/4 | 2 bar | 1219 l/min |
| R412007524 | G 1/4 | 3.5 bar | 1872 l/min |
| R412007525 | G 1/4 | 4 bar | 2084 l/min |
| R412007526 | G 1/4 | 4.8 bar | 2424 l/min |
| R412007527 | G 1/4 | 6 bar | 2933 l/min |
| R412007528 | G 1/4 | 8 bar | 3783 l/min |
| R412007529 | G 1/4 | 10 bar | 4632 l/min |
| R412007530 | G 1/4 | 11 bar | 5056 l/min |
| R412007531 | G 1/4 | 15 bar | 6755 l/min |
| R412007532 | G 1/4 | 16 bar | 7179 l/min |
| R412007533 | G 3/8 | 2 bar | 2194 l/min |
| R412007534 | G 3/8 | 3.7 bar | 3567 l/min |
| R412007535 | G 3/8 | 4 bar | 3799 l/min |
| R412007721 | G 3/8 | 5 bar | 4573 l/min |
| R412007536 | G 3/8 | 6 bar | 5347 l/min |
| R412007537 | G 3/8 | 6.8 bar | 5966 l/min |
| R412007538 | G 3/8 | 8 bar | 6895 l/min |
| R412007539 | G 3/8 | 10 bar | 8443 l/min |

| 物料号 | 接口1 | 阀门的开启压力 | 流量 |
|------------|-------|----------|-------------|
| | | | Qn 1→2 |
| R412007540 | G 3/8 | 11 bar | 9217 l/min |
| R412007541 | G 3/8 | 16 bar | 13087 l/min |
| R412007542 | G 1/2 | 0.4 bar | 1115 l/min |
| R412007720 | G 1/2 | 2.9 bar | 3613 l/min |
| R412007690 | G 1/2 | 3.5 bar | 4182 l/min |
| R412007691 | G 1/2 | 4 bar | 4656 l/min |
| R412007692 | G 1/2 | 5 bar | 5604 l/min |
| R412007699 | G 1/2 | 5.5 bar | 6142 l/min |
| R412007696 | G 1/2 | 6 bar | 6553 l/min |
| R412007702 | G 1/2 | 6.5 bar | 7101 l/min |
| R412007698 | G 1/2 | 7 bar | 7501 l/min |
| R412007697 | G 1/2 | 8 bar | 8449 l/min |
| R412007693 | G 1/2 | 8.5 bar | 9018 l/min |
| R412007694 | G 1/2 | 9 bar | 9398 l/min |
| R412007700 | G 1/2 | 10 bar | 10346 l/min |
| R412007701 | G 1/2 | 10.5 bar | 10934 l/min |
| R412007695 | G 1/2 | 11 bar | 11295 l/min |
| R412007703 | G 1/2 | 12 bar | 12243 l/min |
| R412007543 | G 1/2 | 16 bar | 16037 l/min |
| R412007544 | G 3/4 | 0.5 bar | 2627 l/min |
| R412007684 | G 3/4 | 1 bar | 3783 l/min |
| R412007545 | G 3/4 | 3.5 bar | 8737 l/min |
| R412007546 | G 3/4 | 6 bar | 13690 l/min |
| R412007547 | G 3/4 | 6.5 bar | 14754 l/min |
| R412007548 | G 3/4 | 8 bar | 17653 l/min |
| R412007549 | G 3/4 | 10 bar | 21616 l/min |
| R412007550 | G 3/4 | 11 bar | 23598 l/min |
| R412007551 | G 3/4 | 12.5 bar | 26570 l/min |
| R412007552 | G 3/4 | 16 bar | 33505 l/min |

技术信息

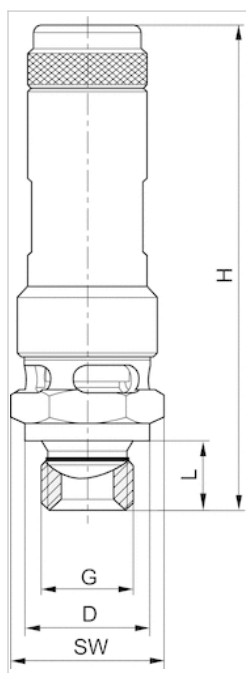
当压力升高率为 10% (PE 1 bar , 0.1 bar) 时达到所标明的功率 , 在 20 °C 下用压缩空气测量。

技术信息

| 材料 | |
|----|------|
| 外壳 | 黄铜 |
| 密封 | 氟-树脂 |

规格

规格



G = 接口 1

规格

| 物料号 | 接口 G | Ø D | H | L | SW | T [Nm] | NW |
|------------|-------|-----|----|----|----|--------|----|
| R412007521 | G 1/4 | 18 | 69 | 10 | 19 | 30 | 8 |
| R412007522 | G 1/4 | 18 | 69 | 10 | 19 | 30 | 8 |
| R412007523 | G 1/4 | 18 | 69 | 10 | 19 | 30 | 8 |
| R412007524 | G 1/4 | 18 | 69 | 10 | 19 | 30 | 8 |
| R412007525 | G 1/4 | 18 | 69 | 10 | 19 | 30 | 8 |
| R412007526 | G 1/4 | 18 | 69 | 10 | 19 | 30 | 8 |
| R412007527 | G 1/4 | 18 | 69 | 10 | 19 | 30 | 8 |
| R412007528 | G 1/4 | 18 | 69 | 10 | 19 | 30 | 8 |
| R412007529 | G 1/4 | 18 | 69 | 10 | 19 | 30 | 8 |
| R412007530 | G 1/4 | 18 | 69 | 10 | 19 | 30 | 8 |
| R412007531 | G 1/4 | 18 | 69 | 10 | 19 | 30 | 8 |
| R412007532 | G 1/4 | 18 | 69 | 10 | 19 | 30 | 8 |
| R412007533 | G 3/8 | 22 | 75 | 10 | 24 | 40 | 10 |
| R412007534 | G 3/8 | 22 | 75 | 10 | 24 | 40 | 10 |
| R412007535 | G 3/8 | 22 | 75 | 10 | 24 | 40 | 10 |
| R412007721 | G 3/8 | 22 | 75 | 10 | 24 | 40 | 10 |
| R412007536 | G 3/8 | 22 | 75 | 10 | 24 | 40 | 10 |
| R412007537 | G 3/8 | 22 | 75 | 10 | 24 | 40 | 10 |
| R412007538 | G 3/8 | 22 | 75 | 10 | 24 | 40 | 10 |
| R412007539 | G 3/8 | 22 | 88 | 10 | 24 | 40 | 10 |
| R412007540 | G 3/8 | 22 | 88 | 10 | 24 | 40 | 10 |
| R412007541 | G 3/8 | 22 | 88 | 10 | 24 | 40 | 10 |
| R412007542 | G 1/2 | 26 | 78 | 12 | 27 | 50 | 15 |

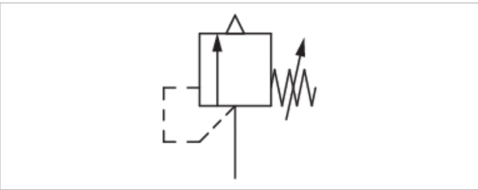
| 物料号 | 接口 G | Ø D | H | L | SW | T [Nm] | NW |
|------------|-------|-----|------|----|----|--------|----|
| R412007720 | G 1/2 | 26 | 78 | 12 | 27 | 50 | 15 |
| R412007690 | G 1/2 | 26 | 78 | 12 | 27 | 50 | 15 |
| R412007691 | G 1/2 | 26 | 78 | 12 | 27 | 50 | 15 |
| R412007692 | G 1/2 | 26 | 78 | 12 | 27 | 50 | 15 |
| R412007699 | G 1/2 | 26 | 78 | 12 | 27 | 50 | 15 |
| R412007696 | G 1/2 | 26 | 78 | 12 | 27 | 50 | 15 |
| R412007702 | G 1/2 | 26 | 78 | 12 | 27 | 50 | 15 |
| R412007698 | G 1/2 | 26 | 78 | 12 | 27 | 50 | 15 |
| R412007697 | G 1/2 | 26 | 77.5 | 12 | 27 | 50 | 15 |
| R412007693 | G 1/2 | 26 | 91 | 12 | 27 | 50 | 15 |
| R412007694 | G 1/2 | 26 | 91 | 12 | 27 | 50 | 15 |
| R412007700 | G 1/2 | 26 | 91 | 12 | 27 | 50 | 15 |
| R412007701 | G 1/2 | 26 | 91 | 12 | 27 | 50 | 15 |
| R412007695 | G 1/2 | 26 | 91 | 12 | 27 | 50 | 15 |
| R412007703 | G 1/2 | 26 | 91 | 12 | 27 | 50 | 15 |
| R412007543 | G 1/2 | 26 | 91 | 12 | 27 | 50 | 15 |
| R412007544 | G 3/4 | 32 | 106 | 12 | 30 | 60 | 20 |
| R412007684 | G 3/4 | 32 | 106 | 12 | 30 | 60 | 20 |
| R412007545 | G 3/4 | 32 | 106 | 12 | 30 | 60 | 20 |
| R412007546 | G 3/4 | 32 | 106 | 12 | 30 | 60 | 20 |
| R412007547 | G 3/4 | 32 | 106 | 12 | 30 | 60 | 20 |
| R412007548 | G 3/4 | 32 | 106 | 12 | 30 | 60 | 20 |
| R412007549 | G 3/4 | 32 | 116 | 12 | 30 | 60 | 20 |
| R412007550 | G 3/4 | 32 | 116 | 12 | 30 | 60 | 20 |
| R412007551 | G 3/4 | 32 | 116 | 12 | 30 | 60 | 20 |
| R412007552 | G 3/4 | 32 | 116 | 12 | 30 | 60 | 20 |

T = 最大扭矩

NW = 额定宽度

系列 RV2

- Qn 1►2 = 1833-13874 l/min
- 可旋紧
- 外螺纹
- G 3/8 G 1/2 G 3/4
- G 1/2 G 3/4 G 1



- 结构特点
- 合格证书
- 工作压力范围
- 阀门的开启压力
- 最低 / 最高环境温度
- 介质

- 提动阀
- CE认证
- 0 ... 20 bar
- 见下表
- 20 ... 100 °C
- 压缩空气

技术数据

| 物料号 | 接口1 | 接口2 | 阀门的开启压力 | 流量 |
|------------|-------|-------|---------|-------------|
| | | | | Qn 1►2 |
| R412007567 | G 3/8 | G 1/2 | 4 bar | 1833 l/min |
| R412007722 | G 3/8 | G 1/2 | 5 bar | 2216 l/min |
| R412007704 | G 3/8 | G 1/2 | 10 bar | 4090 l/min |
| R412007558 | G 1/2 | G 3/4 | 8 bar | 6723 l/min |
| R412007561 | G 1/2 | G 3/4 | 16 bar | 12759 l/min |
| R412007563 | G 3/4 | G 1 | 8 bar | 13874 l/min |

接口 1 = 入口 (例如贮压器) , 接口2 = 排气

技术信息

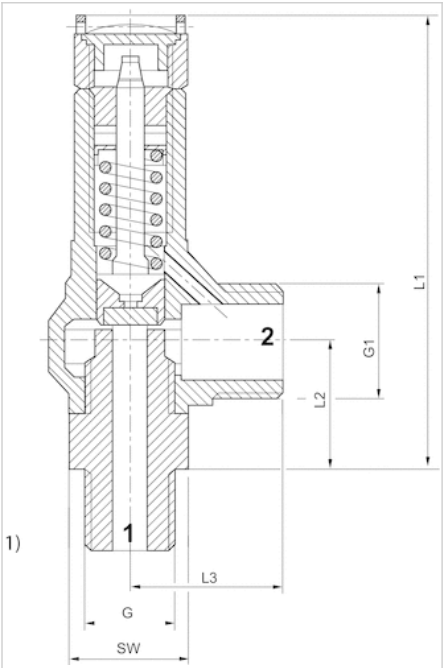
当压力升高率为 10% (PE 1 bar , 0.1 bar) 时达到所标明的功率 , 在 20 °C 下用压缩空气测量。
阀门出口压力 1 bar

技术信息

| 材料 | |
|----|------|
| 外壳 | 黄铜 |
| 密封 | 氟-树胶 |

规格

规格



1) 气流方向：1 向 2

规格

| 物料号 | 接口 G | G1 | L1 | L2 | L3 | SW | T [Nm] | NW |
|------------|-------|-------|-----|------|----|----|--------|----|
| R412007567 | G 3/8 | G 1/2 | 85 | 23.5 | 29 | 22 | 40 | 7 |
| R412007722 | G 3/8 | G 1/2 | 85 | 23.5 | 29 | 22 | 40 | 7 |
| R412007704 | G 3/8 | G 1/2 | 85 | 23.5 | 29 | 22 | 40 | 7 |
| R412007558 | G 1/2 | G 3/4 | 105 | 30 | 32 | 25 | 65 | 10 |
| R412007561 | G 1/2 | G 3/4 | 105 | 30 | 32 | 25 | 65 | 10 |
| R412007563 | G 3/4 | G 1 | 136 | 37 | 45 | 35 | 160 | 14 |

T = 推荐转矩

NW = 额定宽度