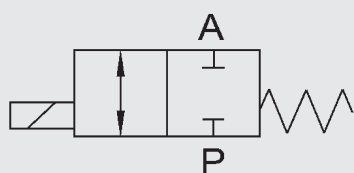




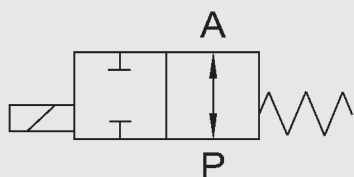
2/2 way Coaxial Valve

CX02 to CX05 direct acting

Switching function



NC (closed when de-energised)



NO (open when de-energised)

Order data

- Nominal size
- Connection
- Function NC/NO
- Operating pressure
- Flow rate
- Medium
- Medium temperature
- Ambient temperature
- Supply voltage

! If order details or application data are inaccurate or incomplete, there is a risk that the technical configuration of the valves may not be correct for the desired use. This may result in the physical and/or chemical characteristics of the materials or seals used not being adequate for the intended use.

Model code

(also example order)

CX02 2/2 D C 2 10 020 014 24V ...

Designation

CX02 = CX02 series
CX03 = CX03 series
CX04 = CX04 series
CX05 = CX05 series

Ways

2/2 = Number of ways

Control

D = Direct

Switching function

C = NC - closed when de-energised
O = NO - open when de-energised

Housing material

1 = Free from non-ferrous materials*
2 = Brass (standard)
3 = Brass, nickel-plated*
4 = 1.4305* (except for CX02)
5 = 1.4571* (except for CX02)

Nominal size

10 = DN 10
15 = DN 15
20 = DN 20
25 = DN 25
32 = DN 32
40 = DN 40
50 = DN 50

Pressure range

020 = CX02 > 0 - 20 bar
040 = CX03 > 0 - 40 bar
064 = CX04 > 0 - 64 bar
100 = CX05 > 0 - 100 bar

Connection

014 = G $\frac{1}{4}$ - DN 10
038 = G $\frac{3}{8}$ - DN 10, DN 15
012 = G $\frac{1}{2}$ - DN 10, DN 15, DN 20
034 = G $\frac{3}{4}$ - DN 10*, DN 15, DN 20, DN 25
100 = G1 - DN 15*, DN 20, DN 25, DN 32
114 = G1 $\frac{1}{4}$ - DN 20*, DN 25, DN 32
112 = G1 $\frac{1}{2}$ - DN 25*, DN 32, DN 40
200 = G2 - DN 50

Supply voltage

24V = 24 V DC
230V = 230 V AC 40-60 Hz
Special voltages on request

Options

See accessories

*optional

Technical Data

Control	2/2 way valve, direct acting			
Nominal size	DN 10 to DN 50			
Pressure range (see table)	CX02 – 2/2 DN 10 - 32	PN 0 to PN	20	
	CX03 – 2/2 DN 10 - 32	PN 0 to PN	40	
	CX03 – 2/2 DN 40 - 50	PN 0 to PN	16	
	CX04 – 2/2 DN 10 - 32	PN 0 to PN	64	
	CX05 – 2/2 DN 10 - 32	PN 0 to PN	100	
Connections (see table)	Threaded sleeve flange on request			
Housing material	Sleeve version	Brass, nickel-coated brass, 1.4305, 1.4571		
	Flange version	on request		
Valve seat (plastic on metal)	FKM PTFE	CX02 / CX03 / CX04 CX05		
Material of seals	Static: Dynamic:	FKM PTFE		
Back-pressure resistant	Up to 16 bar			
Vacuum	Leakage rate <10 ⁻⁶ mbar•l/s *			
Media	Gaseous, liquid, contaminated			
Abrasive operating fluids	On request			
Flow direction	P → A A → P	as marked max. 16 bar		
Temperature of medium	-10 °C to +100 °C			
Ambient temperature	-10 °C to +50 °C			
Mounting position	No orientation restrictions			
Limit switch	Inductive*			
Fixing	Mounting bracket*			

Electrical part

Supply voltage	DC: 24 V
	AC: 230 V 40-60 Hz
Electrical part	DC: DC magnet
	AC: DC magnet with integrated rectifier
Connection	Connector plug to DIN EN 175301-803 type A
	Connector plug to DESINA M12x1 *
	Illuminated plug with varistor *
Voltage tolerance	+ / - 10% to VDE 0580
Duty cycle	100% duty cycle
Protection class	IP 65 when fitted with connector plug

⚠

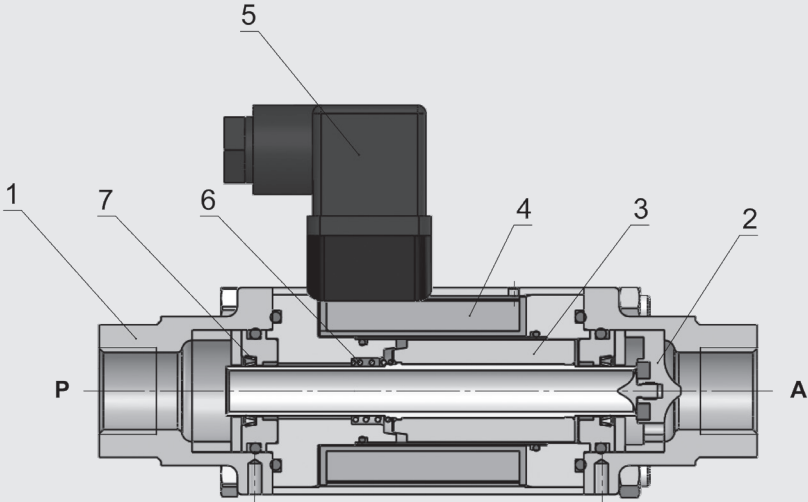
The material specification refers exclusively to the valve connection parts in contact with the medium.

*optional

⚠

The valves are technically configured for specific media and applications. This may result in deviations from the general information given in the data sheet in terms of the design, sealing materials and specifications.

Section drawing

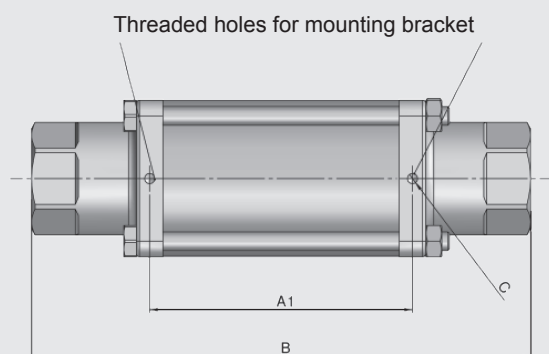


Item	Designation	Qty.
1	Connection	2
2	Valve seat	1
3	Solenoid armature	1
4	Magnet	1
5	Connector plug	1
6	Spring	1
7	PTFE rod seal	2

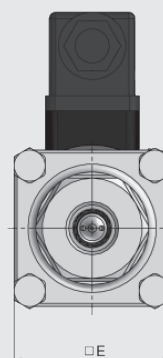
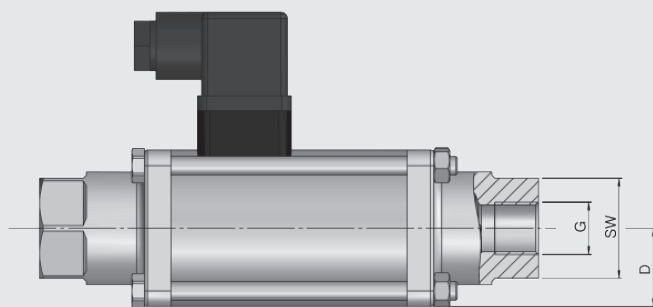
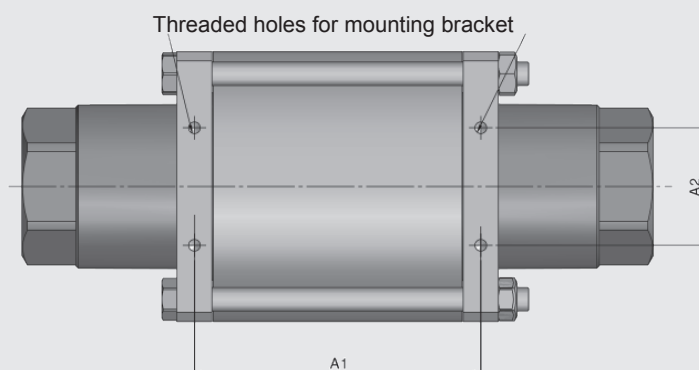
Series	DN [mm]	Pressure [bar]	Connection	Kv value [m³/h]	Power consumption [W]		Weight [kg]
					24V DC	230 V 50 Hz	
CX02	10	0 – 20	G¼, G¾, G½	2.5	25	29	1.7
	15	0 – 20	G¾, G½, G¾	5.2	30	32	3.6
	20	0 – 20	G½, G¾, G1	7.0	34	42	5.4
	25	0 – 20	G¾, G1, G1¼	12.3	51	60	7.1
	32	0 – 20	G1, G1¼, G1½	20.0	73	76	12.6
CX03	10	0 – 40	G¼, G¾, G½	2.5	35	41	1.7
	15	0 – 40	G¾, G½, G¾	5.2	40	45	3.6
	20	0 – 40	G½, G¾, G1	7.0	45	53	5.4
	25	0 – 40	G¾, G1, G1¼	12.3	60	68	7.1
	32	0 – 40	G1, G1¼, G1½	20.0	73	76	12.6
	40	0 – 16	G1½	45.7	73	91	18.3
	50	0 – 16	G2	47.2	73	91	18.3
CX04	10	0 – 64	G¼, G¾, G½	2.5	44	53	1.7
	15	0 – 64	G¾, G½, G¾	5.2	50	55	3.6
	20	0 – 64	G½, G¾, G1	7.0	53	59	5.4
	25	0 – 64	G¾, G1, G1¼	12.3	77	85	7.1
	32	0 – 64	G1, G1¼, G1½	20.0	73	76	12.6
CX05	10	0 – 100	G¼, G¾, G½	2.5	44	53	1.7
	15	0 – 100	G¾, G½, G¾	5.2	50	55	3.6
	20	0 – 100	G½, G¾, G1	7.0	53	59	5.4
	25	0 – 100	G¾, G1, G1¼	12.3	77	85	7.1
	32	0 – 100	G1, G1¼, G1½	20.0	73	76	12.6

Dimensions

DN 10 - DN 25

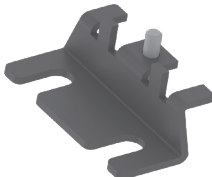
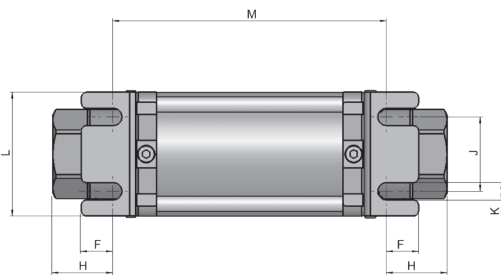
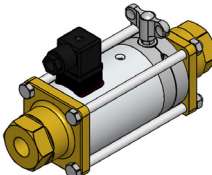
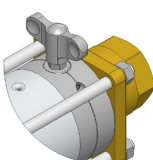
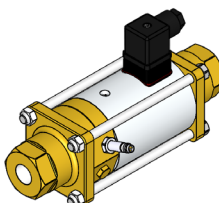
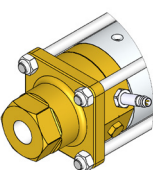
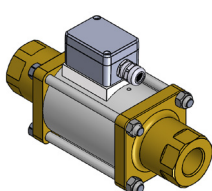
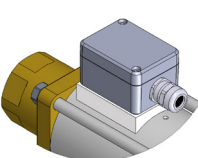
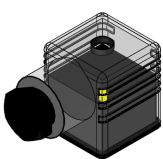
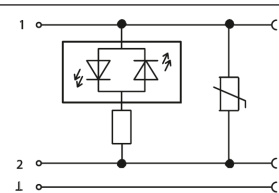
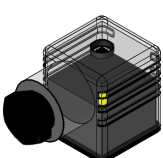
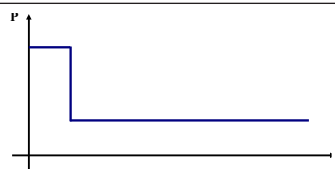
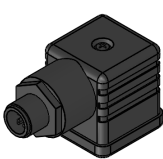


DN 32 - DN 50



DN	G	SW	A1 [mm]	A2 [mm]	B [mm]	C	D [mm]	E [mm]
10	G¼, G¾, G½	32	84	–	159.5	M4	25	50
15	G¾, G½, G¾	41	100	–	184	M5	35	70
20	G½, G¾, G1	46	108	–	215	M5	40	80
25	G¾, G1, G1¼	55	121	–	246	M5	45	90
32	G1, G1¼, G1½	60	122	50	269	M6	57.5	115
40	G1½	75	131	60	304	M6	65	130
50	G2	75	131	60	304	M6	65	130

Accessories

	<p>Mounting bracket mechanical option = HW</p> <table><tr><th>DN</th><th>F [mm]</th><th>H [mm]</th><th>J [mm]</th><th>K [mm]</th><th>L [mm]</th><th>M [mm]</th></tr><tr><td>10</td><td>10</td><td>23.5</td><td>30</td><td>7</td><td>50</td><td>113</td></tr><tr><td>15</td><td>10.5</td><td>22.5</td><td>45</td><td>7</td><td>70</td><td>139</td></tr><tr><td>20</td><td>15.3</td><td>33.5</td><td>50</td><td>7</td><td>80</td><td>149</td></tr><tr><td>25</td><td>16</td><td>34</td><td>60</td><td>8.5</td><td>90</td><td>178</td></tr><tr><td>32</td><td>6</td><td>37</td><td>78</td><td>6.5</td><td>115</td><td>195</td></tr><tr><td>40</td><td>6</td><td>40</td><td>98</td><td>6.5</td><td>130</td><td>224</td></tr><tr><td>50</td><td>6</td><td>40</td><td>98</td><td>6.5</td><td>130</td><td>224</td></tr></table>	DN	F [mm]	H [mm]	J [mm]	K [mm]	L [mm]	M [mm]	10	10	23.5	30	7	50	113	15	10.5	22.5	45	7	70	139	20	15.3	33.5	50	7	80	149	25	16	34	60	8.5	90	178	32	6	37	78	6.5	115	195	40	6	40	98	6.5	130	224	50	6	40	98	6.5	130	224	
DN	F [mm]	H [mm]	J [mm]	K [mm]	L [mm]	M [mm]																																																				
10	10	23.5	30	7	50	113																																																				
15	10.5	22.5	45	7	70	139																																																				
20	15.3	33.5	50	7	80	149																																																				
25	16	34	60	8.5	90	178																																																				
32	6	37	78	6.5	115	195																																																				
40	6	40	98	6.5	130	224																																																				
50	6	40	98	6.5	130	224																																																				
	<p>Manual override mechanical option = HT</p>																																																									
	<p>Position indicator, inductive electrical option = 1I (open or closed) electrical option = 2I (open and closed)</p>																																																									
	<p>Terminal box Protection class: IP 65 PG11-screw connection electrical option = PG</p>																																																									
	<p>Female connector with LED electrical option = LED</p>																																																									
	<p>Female connector with power reduction 24 V DC Form A electrical option = LS</p>																																																									
	<p>Female connector M12x1 electrical option = M12</p>																																																									

On request we would be happy to discuss your requirements for further options and accessories.

NOTE

The information in this brochure relates to the operating conditions and applications described. For applications and operating conditions not described, please contact the relevant technical department.

The operator is always responsible for determining the product suitability for the specific application. Quantified values for product characteristics are average values for a new product that undergo a time deterioration process.

Subject to technical modifications and errors.

HYDAC Accessories GmbH
Hirschbachstr. 2
66280 Sulzbach/Saar
Tel.: +49 (0)6897 - 509-01
Fax: +49 (0)6897 - 509-1009
Internet: www.hydac.com
E-Mail: info@hydac.com