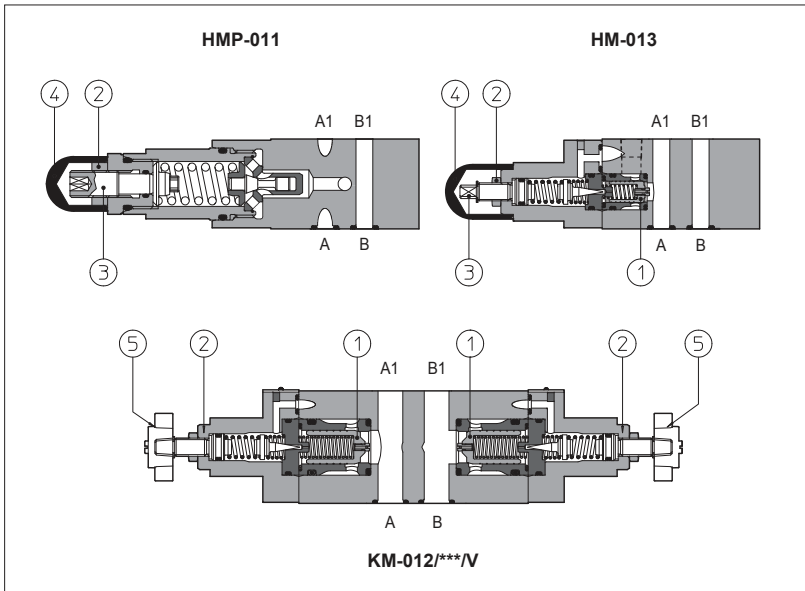


HMP, HM, KM型叠加式溢流阀

ISO 4401标准, 06和10通路



HMP是直动式溢流阀。
HM和**KM**是先导式平衡座阀①式溢流阀。

压力调整的方式：松开锁紧螺母②，转动保护帽④下的调节螺杆③。可选手轮⑤调整代替螺杆调整，可按要求供货。
顺时针转动增大压力。

阀规格和最大流量：

HMP = 06通路, 最大流量: 35 l/min

HM = 06通路, 最大流量: 60 l/min

KM = 10通路, 最大流量: 120 l/min

安装界面: **ISO 4401标准, 06和10通路**
最大压力: 高达**350bar**

1 型号

HM	-	011	/	210	/	V	**	/	*										
叠加式溢流阀规格: HMP = 06通路 HM = 06通路 KM = 10通路																			
机能, 见第 [2] 节 011 = 单作用于P口, T口回油 012 = 双作用于A口和B口, T口回油 013 = 单作用于A口, T口回油 014 = 单作用于B口, T口回油 015 = 双作用于A口和B口, 交互式溢流																			
选项: V = 手轮调整代替带保护帽的螺杆调整 仅对HMP: R = 用于减少泄漏的特殊要求 VF = 调节手轮 VS = 带安全锁的调节手轮																			
压力范围: <table border="0"> <tr> <td>HMP:</td> <td>50 = 2~50 bar</td> <td>100 = 3~100 bar</td> <td>210 = 10~210 bar</td> <td>350 = 15~350 bar</td> </tr> <tr> <td>HM和KM:</td> <td>50 = 4~50 bar</td> <td>100 = 5~100 bar</td> <td>210 = 5~210 bar</td> <td>350 = 5~350 bar</td> </tr> </table>										HMP:	50 = 2~50 bar	100 = 3~100 bar	210 = 10~210 bar	350 = 15~350 bar	HM和KM:	50 = 4~50 bar	100 = 5~100 bar	210 = 5~210 bar	350 = 5~350 bar
HMP:	50 = 2~50 bar	100 = 3~100 bar	210 = 10~210 bar	350 = 15~350 bar															
HM和KM:	50 = 4~50 bar	100 = 5~100 bar	210 = 5~210 bar	350 = 5~350 bar															
密封材料, 见第 [3] 节: - = NBR PE = FKM BT = HNBR																			
设计号																			

2 液压特性

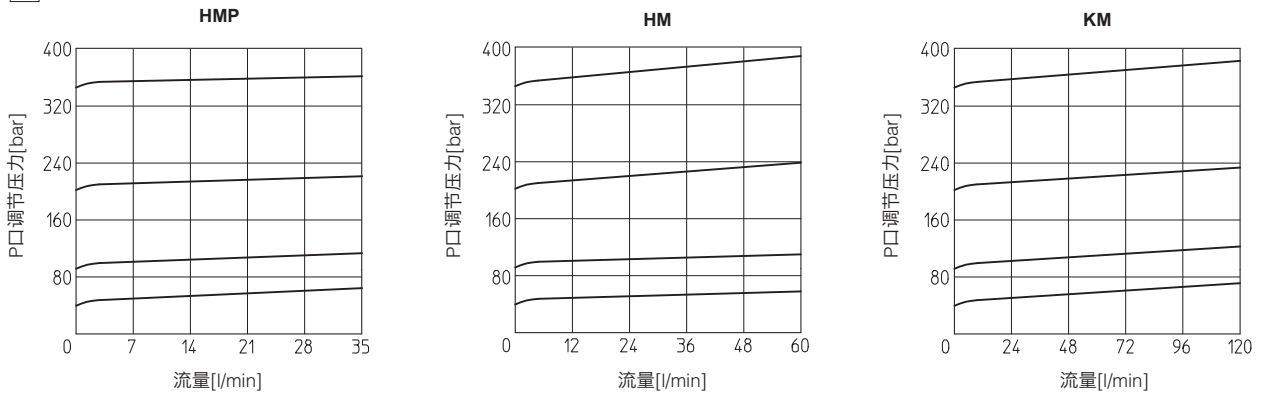
液压机能

阀型号	HMP	HM	KM
最大流量 [l/min]	35	60	120
压力范围 [bar]	2÷50; 3÷100; 10÷210; 15÷350	4÷50; 5÷100; 5÷210; 5÷350	

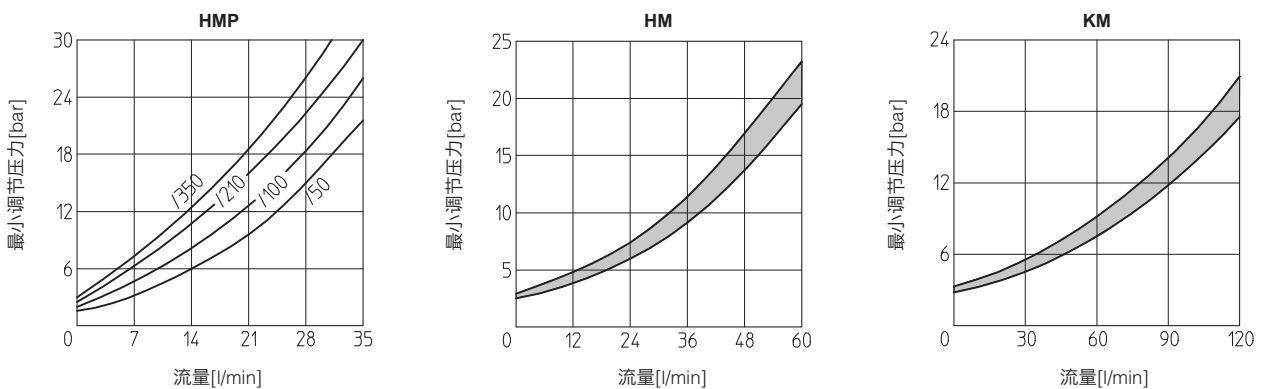
3 主要特征, 密封和油液 - 关于表中未列出的油液, 请咨询我们技术部

安装位置	任意位置		
安装面参数要求	粗糙度Ra0.4, 平面度0.01/100 (ISO 1101)		
MTTFd 值符合EN ISO 13849 标准	150年, 详细信息见技术样本P007		
环境温度范围	标准型 = -30°C ~ +70°C /PE选项 = -20°C ~ +70°C /BT选项 = -40°C ~ +70°C		
密封, 推荐油液温度	NBR密封 (标准型) = -20°C ~ +60°C, 带HFC油液=-20°C ~ +50°C FKM密封 (/PE选项) = -20°C ~ +80°C HNBR密封 (/BT选项) = -40°C ~ +60°C, 带HFC油液=-40°C ~ +50°C		
推荐粘度	15~100mm ² /s- 最大允许范围2.8~500mm ² /s		
油液清洁度	ISO 4406 标准 21/19/16 NAS 1638 10级, 安装过滤精度为25μm 的进油过滤器,(β10≥75 推荐值)		
油液种类	适合密封类型	种类	参考标准
矿物油	NBR, FKM, HNBR	HL, HLP, HLPD, HVLP, HVLPD	DIN 51524
不含水抗燃油液	FKM	HFDU, HFDR	ISO 12922
含水抗燃油液	NBR, HNBR	HFC	

4 调节压力流量曲线 (基于油温50°C, ISO VG46 矿物油)

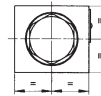
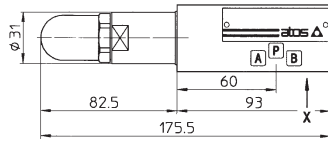
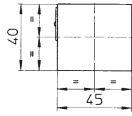


5 最小压力流量曲线 (基于油温40°C, 油液粘度25mm²/s)



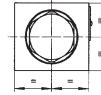
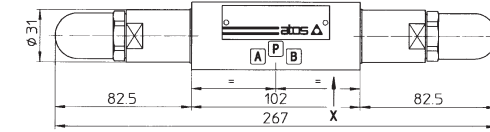
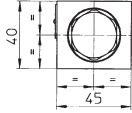
6 HMP型阀安装尺寸

HMP-011



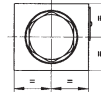
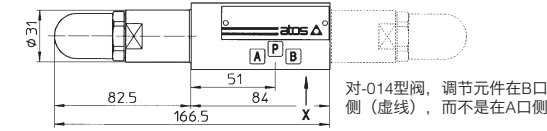
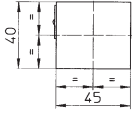
质量: 1.4 Kg

HMP-012



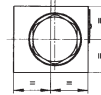
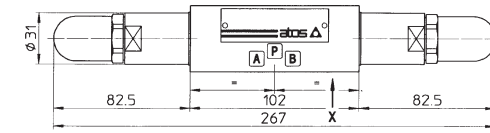
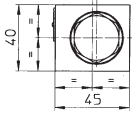
质量: 1.7 Kg

HMP-013
HMP-014



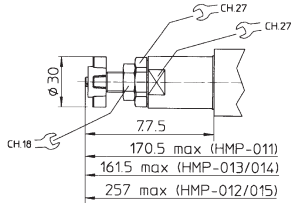
质量: 1.2 Kg

HMP-015



质量: 1.7 Kg

选项/V的调节装置



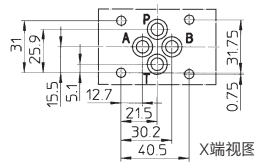
170.5 max (HMP-011)
161.5 max (HMP-013/014)
257 max (HMP-012/015)

ISO 4401: 2005

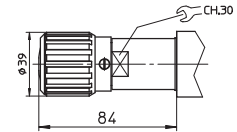
安装界面: 4401-03-02-0-05

A, B, P, T口尺寸: $\varnothing = 7.5$ mm

密封圈: 4×OR108



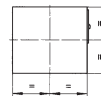
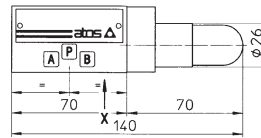
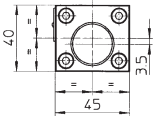
选项/VF和/VS的调节装置



紧固螺钉: 4个M5内六角螺钉, 长度由叠加阀的数量和型号决定。

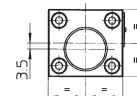
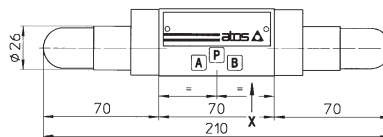
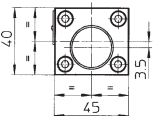
7 HM型阀安装尺寸

HM-011
HM-014



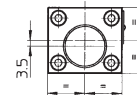
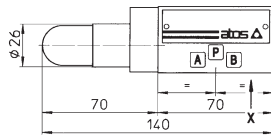
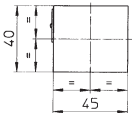
质量: 1.1 Kg

HM-012
HM-015



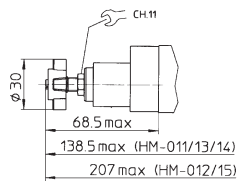
质量: 1.3 Kg

HM-013

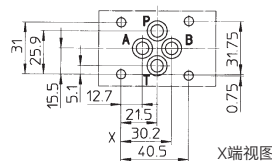


质量: 1.1 Kg

选项/V的调节装置



138.5 max (HM-011/13/14)
207 max (HM-012/15)



ISO 4401: 2005

安装界面: 4401-03-02-0-05

A, B, P, T口尺寸: $\varnothing = 7.5$ mm

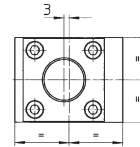
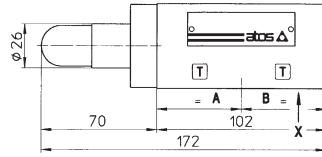
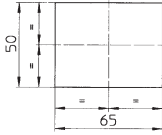
密封圈: 4×OR108

紧固螺钉: 4个M5内六角螺钉, 长度由叠加阀的数量和型号决定。

D

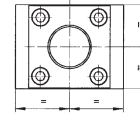
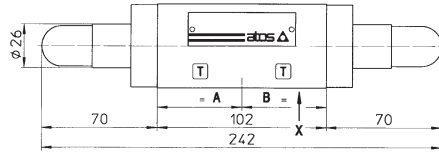
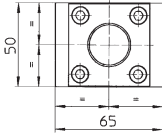
8 KM型阀安装尺寸

KM-011



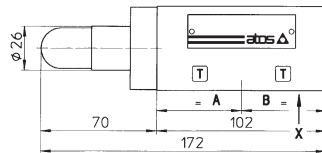
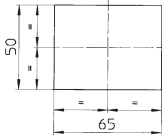
质量: 2.5 Kg

KM-012



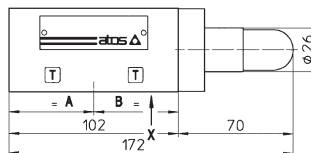
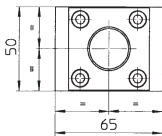
质量: 2.8 Kg

KM-013



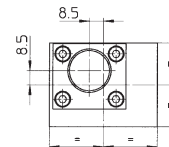
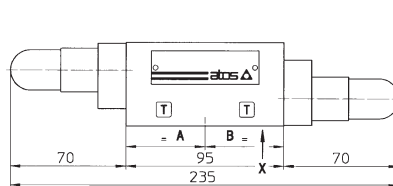
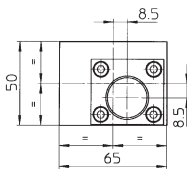
质量: 2.5 Kg

KM-014



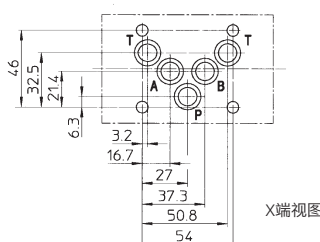
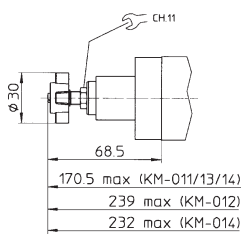
质量: 2.5 Kg

KM-015



质量: 2.5 Kg

选项V的调节装置



ISO 4401: 2005

安装界面: 4401-05-04-0-05

A, B, P, T口尺寸: $\varnothing = 11.2$ mm

密封圈: 5×OR2050

紧固螺钉: 4个M6内六角螺钉, 长度由叠加阀的数量和型号决定。