



GW*i*
SERIES 3000

GW
SERIES 3000

FR-CHF-ID-1017

 SWISS MADE

 **DC**® **THREADING
TECHNOLOGY**

LA MEILLEURE SOLUTION POUR ACIERS INOXYDABLES ET ALLIAGES DE NICKEL

Ø 0.8 - 6.5 mm

Ø 6.5 - 20 mm

GW*i*
SERIES 3000

VX
COATED



Évacuation de copeaux



Durée de vie doublée



Processus sécurisé

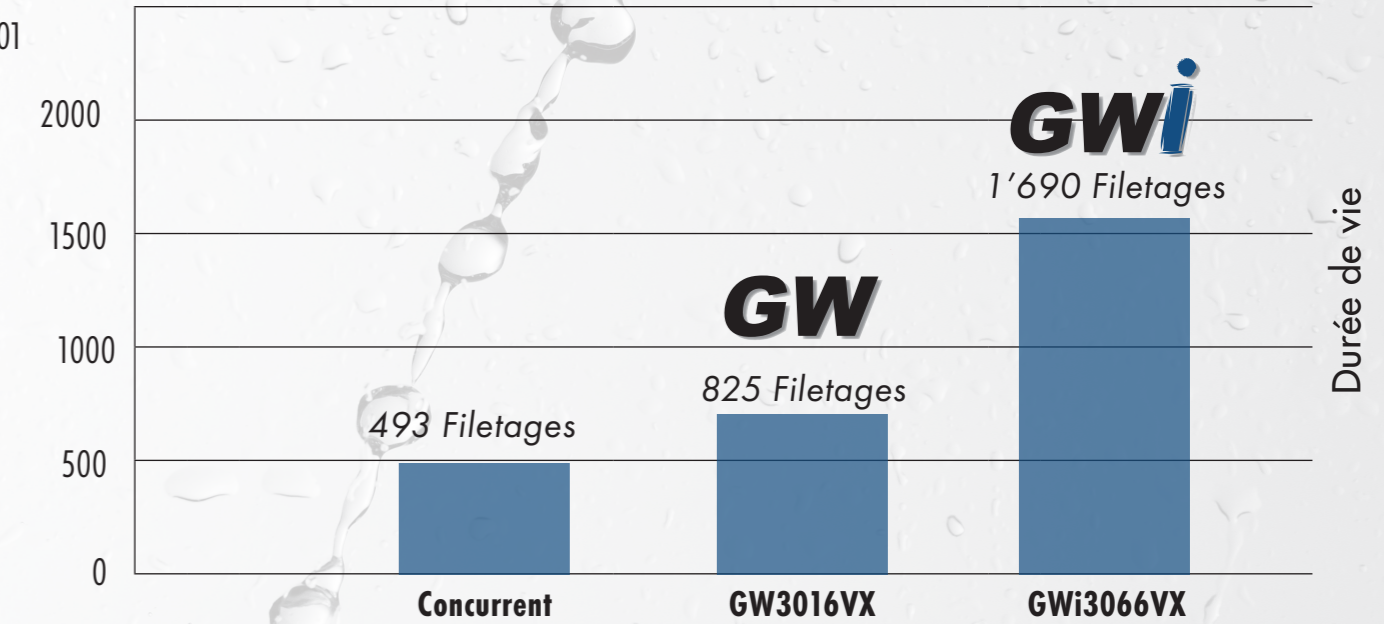


Pas de soudure froide

www.dcswiss.com

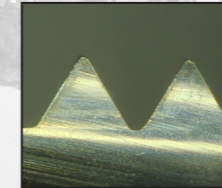
PERFORMANCE

Matière: Acier inoxydable (austénitique), 1.4301
Machine: DMC 650V
Genre de trou: Trou borgne
Dia. de filetage: M3 6H
Longueur fileté: 2 x D₁
Lubrifiant: Émulsion 8%
Vc & Avance: 50 m/min & 0.02 mm/dent

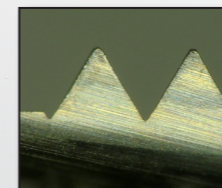


USURE

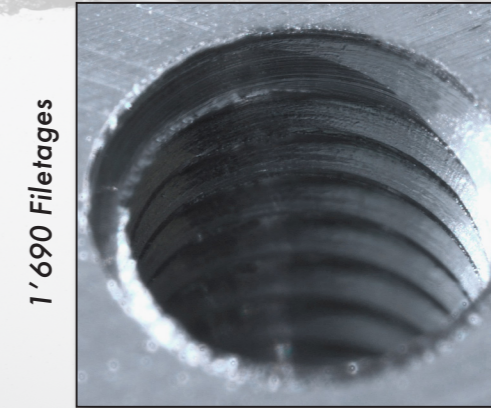
GW*i* VX
1'690 Filetages



GW VX
825 Filetages

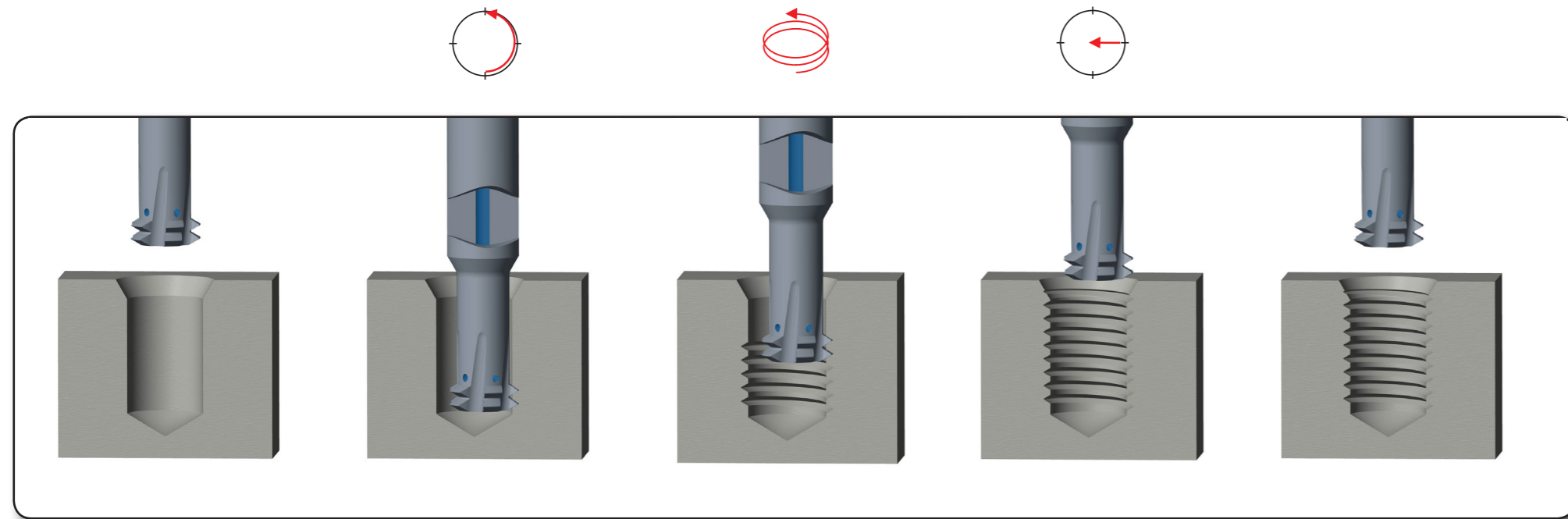


QUALITÉ DE SURFACE



1'690 Filetages dans la matière 1.4301
Nombre de corrections NC: 2
 (Concurrent: 5)

CYCLE DE PROGRAMMATION



PICTOGRAMMES

	Longueur fileté 2.5 x D ₁		Protection contre l'usure		Filetage intérieur		Lubrification intérieure GWi
	Longueur fileté 3 x D ₁		Protection contre l'usure		Classe de tolérance		Profil GW
	Longueur fileté 4 x D ₁		Carbure monobloc		Usinage HSC		Du stock
							Livraison en 3 semaines

TABELLE D'UTILISATION

UTILISATION

Optimale Fonctionnelle

CLASSIFICATION DES MATIÈRES

Matières	Désignation des matières	Dureté (HB)	Résistance Rm (N/mm ²)	Allongement A (%)
Aciers	11 Aciers de décolletage	< 200	< 700	< 10
	12 Aciers de construction / cémentation	< 200	< 700	< 30
	13 Aciers au carbone	< 300	< 1000	< 20
	14 Aciers alliés < 850 N/mm ²	< 250	< 850	< 30
	15 Aciers alliés / traités > 850 - < 1150 N/mm ²	> 250	> 850	< 30
	16 Aciers haute résistance	> 250	> 850	< 12
Aciers inoxydables	21 Aciers inoxydables / soufrés	< 250	< 850	< 25
	22 Austénitiques	< 250	< 850	> 20
	23 Ferritiques et martensitiques < 850 N/mm ²	< 250	< 850	> 20
	24 Ferritiques et martensitiques > 850 - < 1150 N/mm ²	> 250	> 850	> 15
Fonte	31 Fonte grise	< 250	< 850	< 10
	32 Fonte à graphite sphéroïdale et malléable	< 250	< 850	> 10
Titane	41 Titane pur	< 250	< 850	> 20
	42 Alliage de titane	> 250	> 850	< 20
Nickel	51 Alliage de Nickel 1 < 850 N/mm ²	< 250	< 850	> 25
	52 Alliage de Nickel 2 > 850 - < 1150 N/mm ²	> 250	> 850	< 25
	53 Alliage de Nickel 3 > 1150 - ≤ 1600 N/mm ²	> 340	> 1150	< 20
Cuivre	61 Cuivre pur (électrolytique)	< 120	< 400	> 12
	62 Laiton, bronze (copeaux courts)	< 200	< 700	< 12
	63 Laiton (copeaux longs)	< 200	< 700	> 12
Aluminium Magnésium	71 Al non allié	< 100	< 350	> 15
	72 Al allié Si < 1.5 %	< 150	< 500	> 15
	73 Al allié Si > 1.5 % - < 10 %	< 120	< 400	< 15
	74 Al allié Si > 10 %, Alliages Magnésium	< 120	< 400	< 10
Matières plastiques	81 Matières thermoplastiques	-	-	-
	82 Matières duroplastiques	-	-	-
	83 Matières plastiques renforcées par fibres	-	-	-

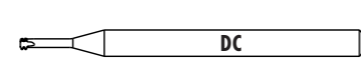
VS	VX	VS	VX	Avance fz (mm/dent)				
				Ø 0.3 - 1.0	Ø 1.01 - 3.0	Ø 3.01 - 6.0	Ø 6.01 - 20.0	
				80 - 100	0.004 - 0.01	0.01 - 0.05	0.04 - 0.10	0.08 - 0.15
				80 - 100	0.004 - 0.01	0.01 - 0.05	0.04 - 0.10	0.08 - 0.15
				70 - 90	0.004 - 0.01	0.01 - 0.05	0.02 - 0.10	0.05 - 0.15
				70 - 90	0.004 - 0.01	0.01 - 0.05	0.02 - 0.10	0.05 - 0.15
				30 - 50	0.004 - 0.01	0.01 - 0.05	0.02 - 0.08	0.04 - 0.15
				15 - 40	0.003 - 0.01	0.006 - 0.03	0.008 - 0.05	0.01 - 0.08
				40 - 60	0.004 - 0.01	0.01 - 0.05	0.02 - 0.10	0.05 - 0.15
				30 - 50	0.004 - 0.01	0.01 - 0.03	0.02 - 0.05	0.03 - 0.08
				30 - 50	0.004 - 0.01	0.01 - 0.03	0.02 - 0.05	0.03 - 0.08
				30 - 50	0.004 - 0.01	0.01 - 0.03	0.02 - 0.05	0.03 - 0.08
				90 - 120	0.004 - 0.01	0.01 - 0.05	0.04 - 0.10	0.08 - 0.15
				70 - 90	0.004 - 0.01	0.01 - 0.05	0.02 - 0.10	0.05 - 0.15
				20 - 40	0.004 - 0.01	0.01 - 0.03	0.02 - 0.05	0.03 - 0.08
				15 - 35	0.004 - 0.01	0.01 - 0.03	0.02 - 0.05	0.03 - 0.08
				20 - 40	0.004 - 0.01	0.01 - 0.03	0.02 - 0.05	0.03 - 0.08
				20 - 40	0.004 - 0.01	0.01 - 0.03	0.02 - 0.05	0.03 - 0.08
				20 - 30	0.003 - 0.01	0.006 - 0.03	0.008 - 0.05	0.01 - 0.08
				200 - 250	0.004 - 0.01	0.01 - 0.05	0.02 - 0.10	0.05 - 0.15
				150 - 200	0.004 - 0.01	0.01 - 0.05	0.04 - 0.10	0.08 - 0.15
				150 - 200	0.004 - 0.01	0.01 - 0.05	0.02 - 0.10	0.05 - 0.15
				200 - 300	0.004 - 0.01	0.01 - 0.05	0.05 - 0.10	0.10 - 0.20
				200 - 300	0.004 - 0.01	0.01 - 0.05	0.05 - 0.10	0.10 - 0.20
				200 - 300	0.004 - 0.01	0.01 - 0.05	0.05 - 0.10	0.10 - 0.20
				200 - 300	0.004 - 0.01	0.01 - 0.05	0.04 - 0.10	0.08 - 0.15
				200 - 300	0.004 - 0.01	0.01 - 0.05	0.05 - 0.10	0.10 - 0.20
				100 - 200	0.004 - 0.01	0.01 - 0.05	0.04 - 0.10	0.08 - 0.15
				80 - 100	0.004 - 0.01	0.01 - 0.05	0.04 - 0.10	0.08 - 0.15

M ISO DIN 14
ISO DIN 13

GWi

VHM
CAR

< 3µm



h6

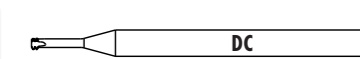
GWi3066VS GWi3067VS GWi3069VS												GWi3066VX GWi3067VX												GWi3066VS	GWi3067VS	GWi3069VS	GWi3066VX	GWi3067VX
VS VX												VX																
D ₁	P	d ₁	l ₁			l ₃			d ₂ h6	d ₃			ID															
M 0.8	0.2	0.57	2.5 - 3 x D ₁	2.5 x D ₁	3 x D ₁	4 x D ₁	4 x D ₁	3	0.29	3	0.65	186029	187325		187325													
0.9	0.225	0.64	40	2.6	3.0	40	3.9	3	0.33	3	0.70	186030	187326		187326													
1	0.25	0.71	40	2.9	3.4	40	4.4	3	0.36	3	0.75	186031	187327		187327													
1.2	0.25	0.91	40	3.4	4.0	40	5.2	3	0.56	3	0.95	186032	187328		187328													
1.4	0.3	1.06	40	3.9	4.6	40	6.0	4	0.64	3	1.10	186033	186443	187329	187453	187453												
1.6	0.35	1.20	40	4.5	5.3	40	6.9	4	0.71	3	1.25	186034	186444	187330	187454	187454												
1.8	0.35	1.40	40	5.0	5.9	40	7.7	4	0.91	3	1.45	186035	186445	187331	187455	187455												
2	0.4	1.54	40	5.6	6.6	40	8.6	4	0.98	3	1.60	186036	186446	187332	187456	187456												
2.5	0.45	1.98	40	6.9	8.1	40	10.6	4	1.35	3	2.05	186037	186447	187333	187457	187457												
3	0.5	2.43	51	8.4	9.9	51	12.9	5	1.73	4	2.50	186038	186448	187334	187458	187458												
3.5	0.6	2.81	51	9.9	11.6	51	15.1	6	1.97	4	2.90	186039	186449	187335	187459	187459												
4	0.7	3.20	51	11.3	13.3	51	17.3	6	2.22	4	3.30	186040	186450	187336	187460	187460												
5	0.8	4.08	51	14.0	16.5	51	21.5	8	2.96	4	4.20	186041	186451	187337	187461	187461												
6	1	4.85	51	16.8	19.8	51	25.8	8	3.45	4	5.00	186042	186452	187338	187462	187462												
8	1.25	5.95	75	23.0	27.0	75	35.0	6	4.20	5	6.80	186043	186453	187339	187463	187463												
10	1.5	7.95	83	28.0	33.0	83	43.0	8	5.85	5	8.50	186044	186454	187340	187464	187464												
12	1.75	9.95	95	34.0	40.0	95	52.0	10	7.50	5	10.25	186045	186455	187341	187465	187465												
14	2	10.95	120	44.0	52.0	120	68.0	12	8.15	5	12.00	186046	186456	187342	187466	187466												
16	2	10.95	120	44.0	52.0	120	68.0	12	8.15	5	14.00	186817	186825	187343	187467	187467												
18	2.5	13.95	135	55.0	65.0	135	85.0	14	10.45	6	15.50	186047	186457	187344	187468	187468												
20	2.5	13.95	135	55.0	65.0	135	85.0	14	10.45	6	17.50	186818	186826	187345	187469	187469												

M ISO DIN 14
ISO DIN 13

GW

VHM
CAR

< 3µm



h5/h6

GW3016VS GW3017VS GW3019VS												GW3016VX GW3017VX												GW3016VS	GW3017VS	GW3019VS	GW3016VX	GW3017VX
VS VX												VX																
D ₁	P	d ₁	l ₁			l ₃			d ₂ h5	d ₃			ID															
M 0.8	0.2	0.57	2.5 - 3 x D ₁	2.5 x D ₁	3 x D ₁	4 x D ₁	4 x D ₁	3	0.29	3	0.65	167035	186266	167077	187261	187389												
0.9	0.225	0.64	39	2.6	3.0	39	3.9	3	0.33	3	0.70	167036	186267	167078	187262	187390												
1	0.25	0.71	39	2.9	3.4	39	4.4	3	0.36	3	0.75	167037	186268	167079	187263	187391												
1.2	0.25	0.91	39	3.4	4.0	39	5.2	3	0.56	3	0.95	167038	186269	167080	187264	187392												
1.4	0.3	1.06	39	3.9	4.6	39	6.0	3	0.64	3	1.10	167039	186270	167081	187265	187393												
1.6	0.35	1.20	39	4.5	5.3	39	6.9	3	0.71	3	1.25	167040	186271	167082	187266	187394												
1.8	0.35	1.40	39	5.0	5.9	39	7.7	3	0.91	3	1.45	167041	186272	167083	187267	187395												
2	0.4	1.54	39	5.6	6.6	39	8.6	3	0.98	3	1.60	167042	186273	167084	187268	187396												
2.5	0.45	1.98	39	6.9	8.1	39	10.6	3	1.35	3	2.05	167043	186274	167085	187269	187397												
3	0.5	2.43	51	8.4	9.9	51	12.9	5	1.73	4	2.50	167044	186275	167086	187270	187398												
3.5	0.6	2.81	51	9.9	11.6	51	15.1	5	1.97	4	2.90	167045	186276	167087	187271	187399												
4	0.7	3.20	51	11.3	13.3	51	17.3	5	2.22	4	3.30	167046	186277	167088	187272	187400												
5	0.8	4.08	51	14.0	16.5	51	21.5	5	2.96	4	4.20	167047	186278	167089	187273	187401												
6	1	4.85	51	16.8	19.8	51	25.8	5	3.45	4	5.00	167048	186279	167090	187274	187402												
8	1.25	5.95	63	23.0	27.0	75	35.0	6*	4.20	5	6.80	175243	186280	175274	187275	187403												
10	1.5	7.95	67	28.0	33.0	83	43.0	8*	5.85	5	8.50	175244	186281	175275	187276	187404												
12	1.75	9.95	76	34.0	40.0	95	52.0	10*	7.50	5	10.25	175245	186282	175276	187277	187405												
14	2	10.95	95	44.0	52.0	120	68.0	12*	8.15	5	12.00	184748	186283	184751	187278	187406												
16	2	10.95	95	44.0	52.0	120	68.0	12*	8.15	5	14.00	186813	186821	186829	187279	187407												
18	2.5	13.95	105	55.0	65.0	135	85.0	14*	10.45	6	15.50	184503	186284	184754	187280	187408												
20	2.5	13.95	105	55.0	65.0	135	85.0	14*	10.45	6	17.50	186814	186822	186830	187281	187409												

* tol. h6

												GWi3066VS	GWi3067VS	GWi3069VS	GWi3066VX	GWi3067VX											
GWi3066VS GWi3067VS GWi3069VS		VS								GWi3066VX GWi3067VX		VX															
D ₁	P	d ₁	l ₁			l ₃		l ₃		l ₁		l ₃		d ₂ h6	d ₃												
MF 2	0.2	1.77	40	5.3	6.3	40	8.3	4	1.49	3	1.80	186086	186488			187346	187470										
2	0.25	1.71	40	5.4	6.4	40	8.4	4	1.36	3	1.75	186087	186489			187347	187471										
2.5	0.2	2.27	40	6.6	7.8	40	10.3	4	1.99	3	2.30	186088	186490			187348	187472										
2.5	0.25	2.21	40	6.6	7.9	40	10.4	4	1.86	3	2.25	186089	186491			187349	187473										
3	0.35	2.60	51	8.2	9.7	51	12.7	5	2.11	4	2.65	186090	186492	186620		187350	187474										
4	0.5	3.43	51	10.9	12.9	51	16.9	6	2.73	4	3.50	186091	186493	186621		187351	187475										
5	0.5	4.43	51	13.4	15.9	51	20.9	8	3.73	4	4.50	186092	186494	186622		187352	187476										
6	0.75	4.95	51	16.4	19.4	51	25.4	8	3.90	4	5.25	186093	186495	186623		187353	187477										
8	1	5.95	75	22.0	26.0	75	34.0	6	4.55	5	7.00	186094	186496	186624		187354	187478										
10	1	7.95	83	27.0	32.0	83	42.0	8	6.55	5	9.00	186095	186497	186625		187355	187479										
10	1.25	7.95	83	28.0	33.0	83	43.0	8	6.20	5	8.75	186096	186498	186626		187356	187480										
12	1.5	9.95	95	33.0	39.0	95	51.0	10	7.85	5	10.50	186097	186499	186627		187357	187481										
14	1.5	10.95	120	43.0	51.0	120	67.0	12	8.85	5	12.50	186098	186500	186628		187358	187482										
16	1.5	10.95	120	43.0	51.0	120	67.0	12	8.85	5	14.50	186819	186827	186835		187359	187483										
18	1.5	13.95	135	53.0	63.0	135	83.0	14	11.85	6	16.50	186099	186501	186629		187360	187484										
20	1.5	13.95	135	53.0	63.0	135	83.0	14	11.85	6	18.50	186820	186828	186836		187361	187485										

												GW3016VS	GW3017VS	GW3019VS	GW3016VX	GW3017VX											
GW3016VS GW3017VS GW3019VS		VS								GW3016VX GW3017VX		VX															
D ₁	P	d ₁	l ₁			l ₃		l ₃		l ₁		l ₃		d ₂ h5	d ₃												
MF 2	0.2	1.77	39	5.3	6.3	39	8.3	3	1.49	3	1.80	171442	186325	175270		187282	187410										
2	0.25	1.71	39	5.4	6.4	39	8.4	3	1.36	3	1.75	186209	186326	186592		187283	187411										
2.5	0.2	2.27	39	6.6	7.8	39	10.3	3	1.99	3	2.30	175241	186327	175271		187284	187412										
2.5	0.25	2.21	39	6.6	7.9	39	10.4	3	1.86	3	2.25	167299	186328	175272		187285	187413										
3	0.35	2.60	51	8.2	9.7	51	12.7	5	2.11	4	2.65	175242	186329	175273		187286	187414										
4	0.5	3.43	51	10.9	12.9	51	16.9	5	2.73	4	3.50	184572	186330	186593		187287	187415										
5	0.5	4.43	51	13.4	15.9	51	20.9	5	3.73	4	4.50	186210	175199	171033		187288	187416										
6	0.75	4.95	51	16.4	19.4	51	25.4	5	3.90	4	5.25	186211	186331	186594		187289	187417										
8	1	5.95	63	22.0	26.0	75	34.0	6*	4.55	5	7.00	186212	181233	186595		187290	187418										
10	1	7.95	67	27.0	32.0	83	42.0	8*	6.55	5	9.00	186213	186332	186596		187291	187419										
10	1.25	7.95	67	28.0	33.0	83	43.0	8*	6.20	5	8.75	186214	186333	186597		187292	187420										
12	1.5	9.95	76	33.0	39.0	95	51.0	10*	7.85	5	10.50	186215	186334	186598		187293	187421										
14	1.5	10.95	95	43.0	51.0	120	67.0	12*	8.85	5	12.50	186216	186335	186599		187294	187422										
16	1.5	10.95	95	43.0	51.0	120	67.0	12*	8.85	5	14.50	186815	186823	186831		187295	187423										
18	1.5	13.95	105	53.0	63.0	135	83.0	14*	11.85	6	16.50	186217	186336	186600		187296	187424										
20	1.5	13.95	105	53.0	63.0	135	83.0	14*	11.85	6	18.50	186816	186824	186832		187297	187425										

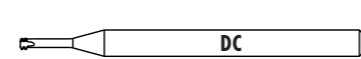
* tol. h6

GW3066VS													GW3066VX													GW3066VS					GW3066VX					GW3067VS					GW3067VX				
VS VX 													VS VX 																																
D ₁	P	D ₁	d ₁	l ₁	l ₃	l ₃	l ₁	l ₃	d ₂ h6	d ₃																																			
UNC	TPI	mm	mm	2.5 - 3 x D ₁	2.5 x D ₁	3 x D ₁	4 x D ₁	4 x D ₁				ID																																	
2	56	2.18	1.66	40	6.1	7.2	40	9.4	4	1.02	3	1.80	186128													187362																			
3	48	2.51	1.90	40	7.0	8.3	40	10.8	4	1.16	3	2.00	186129													187363																			
4	40	2.84	2.11	40	8.0	9.4	40	12.2	5	1.22	3	2.30	186130		186526											187364	187486																		
5	40	3.17	2.44	51	9.1	10.7	51	13.9	5	1.55	4	2.60	186131		186527											187365	187487																		
6	32	3.50	2.59	51	10.2	12.0	51	15.5	6	1.48	4	2.80	186132		186528		186630									187366	187488																		
8	32	4.16	3.25	51	11.9	14.0	51	18.1	6	2.14	4	3.40	186133		186529		186631									187367	187489																		
10	24	4.82	3.60	51	14.0	16.4	51	21.2	8	2.12	4	3.80	186134		186530		186632									187368	187490																		
													186135		186531		186633										187369	187491																	
1/4	20	6.35	4.89	51	18.2	21.4	51	27.7	8	3.11	4	5.10	186136		186532		186634									187370	187492																		
5/16	18	7.93	5.95	75	23.0	27.0	75	35.0	6	3.97	5	6.60	186137		186533		186635									187371	187493																		
3/8	16	9.52	7.10	83	27.0	32.0	83	41.0	8	4.87	5	8.00	186138		186534		186636									187372	187494																		
7/16	14	11.11	7.95	83	32.0	37.0	83	48.0	8	5.41	5	9.30	186139		186535		186637									187373	187495																		
1/2	13	12.70	9.95	95	36.0	42.0	95	55.0	10	7.21	5	10.80	186140		186536		186638									187374	187496																		

GW3016VS													GW3016VX													GW3016VS					GW3017VS					GW3019VS					GW3016VX					GW3017VX				
VS VX 													VS VX 																																					
D ₁	P	D ₁	d ₁	l ₁	l ₃	l ₃	l ₁	l ₃	d ₂ h5	d ₃																																								
UNC	TPI	mm	mm	2.5 - 3 x D ₁	2.5 x D ₁	3 x D ₁	4 x D ₁	4 x D ₁				ID																																						
2	56	2.18	1.66	39	6.1	7.2	39	9.4	3	1.02	3	1.80	167500														187298																							
3	48	2.51	1.90	39	7.0	8.3	39	10.8	3	1.16	3	2.00	186236														187299																							
4	40	2.84	2.11	39	8.0	9.4	39	12.2	3	1.22	3	2.30	167501														187300																							
5	40	3.17	2.44	51	9.1	10.7	51	13.9	5	1.55	4	2.60	186237														187301																							
6	32	3.50	2.59	51	10.2	12.0	51	15.5	5	1.48	4	2.80	167502														187302																							
8	32	4.16	3.25	51	11.9	14.0	51	18.1	5	2.14	4	3.40	167503														187303																							
10	24	4.82	3.60	51	14.0	16.4	51	21.2	5	2.12	4	3.80	173986														187304																							
													186238														187305																							
1/4	20	6.35	4.89	51	18.2	21.4	51	27.7	5	3.11	4	5.10	167504														187306																							
5/16	18	7.93	5.95	63	23.0	27.0	75	35.0	6*	3.97	5	6.60	175246														187307																							
3/8	16	9.52	7.10	67	27.0	32.0	83	41.0	8*	4.87	5	8.00	173546														187308																							
7/16	14	11.11	7.95	67	32.0	37.0	83	48.0	8*	5.41	5	9.30	186239														187309																							
1/2	13	12.70	9.95	76	36.0	42.0	95	55.0	10*	7.21	5	10.80	175247														187310																							

* tol. h6

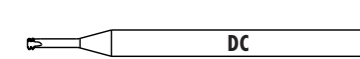
UNF ANSI B1.1



h6

GWi3066VS GWi3067VS GWi3069VS GWi3066 VXX GWi3067 VXX																	
GWi3066VS GWi3067VS GWi3069VS				GWi3066VX GWi3067VX													
D ₁	P	D ₁	d ₁	l ₁	l ₃	l ₃	l ₁	l ₃	d ₂ h6	d ₃							
TPI	mm	mm	mm	2.5 - 3 x D ₁	2.5 x D ₁	3 x D ₁	4 x D ₁	4 x D ₁			ID						
UNF 0	80	1.52	1.15	40	4.3	5.0	40	6.6	4	0.71	3	1.20	186167	187375			
1	72	1.85	1.44	40	5.1	6.1	40	7.9	4	0.95	3	1.50	186168	187376			
2	64	2.18	1.72	40	6.0	7.1	40	9.3	4	1.16	3	1.80	186169	187377			
4	48	2.84	2.23	40	7.9	9.3	40	12.1	5	1.49	3	2.40	186170	187378	187497		
5	44	3.17	2.51	51	9.0	10.6	51	13.8	5	1.70	4	2.60	186171	186559	186560	187379	187498
6	40	3.50	2.77	51	10.0	11.7	51	15.2	6	1.88	4	2.90	186172	186561	186639	187380	187499
8	36	4.16	3.35	51	11.7	13.8	51	18.0	6	2.36	4	3.50	186173	186562	186640	187381	187500
10	32	4.82	3.91	51	13.5	15.9	51	20.8	8	2.80	4	4.10	186174	186563	186641	187382	187501
													186175	186564	186642	187383	187502
1/4	28	6.35	4.95	51	17.6	20.7	51	27.1	8	3.68	4	5.50	186176	186565	186643	187384	187503
5/16	24	7.93	5.95	75	22.0	26.0	75	34.0	6	4.47	5	6.90	186177	186566	186644	187385	187504
3/8	24	9.52	7.10	83	26.0	31.0	83	40.0	8	5.62	5	8.50	186178	186567	186645	187386	187505
7/16	20	11.11	7.95	83	31.0	36.0	83	47.0	8	6.17	5	9.90	186179	186568	186646	187387	187506
1/2	20	12.70	9.95	95	35.0	41.0	95	54.0	10	8.17	5	11.50	186180	186569	186647	187388	187507

UNF ANSI B1.1



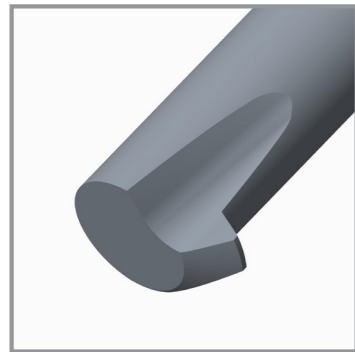
h5/h6

GW3016VS GW3017VS GW3019VS GW3016 VXX GW3017 VXX																	
GW3016VS GW3017VS GW3019VS				GW3016VX GW3017VX													
D ₁	P	D ₁	d ₁	l ₁	l ₃	l ₃	l ₁	l ₃	d ₂ h5	d ₃							
TPI	mm	mm	mm	2.5 - 3 x D ₁	2.5 x D ₁	3 x D ₁	4 x D ₁	4 x D ₁			ID						
UNF 0	80	1.52	1.15	39	4.3	5.0	39	6.6	3	0.71	3	1.20	175248	186404	175280	187311	187439
1	72	1.85	1.44	39	5.1	6.1	39	7.9	3	0.95	3	1.50	175249	186405	175281	187312	187440
2	64	2.18	1.72	39	6.0	7.1	39	9.3	3	1.16	3	1.80	186248	186406	186605	187313	187441
4	48	2.84	2.23	39	7.9	9.3	39	12.1	3	1.49	3	2.40	175250	186407	172376	187314	187442
5	44	3.17	2.51	51	9.0	10.6	51	13.8	5	1.70	4	2.60	186249	186408	169815	187315	187443
6	40	3.50	2.77	51	10.0	11.7	51	15.2	5	1.88	4	2.90	186250	186409	186606	187316	187444
													175251	186410	175282	187317	187445
10	32	4.82	3.91	51	13.5	15.9	51	20.8	5	2.80	4	4.10	167505	184633	167512	187318	187446
													186251	186411	186607	187319	187447
1/4	28	6.35	4.95	51	17.6	20.7	51	27.1	5	3.68	4	5.50	167506	186412	167513	187320	187448
5/16	24	7.93	5.95	63	22.0	26.0	75	34.0	6*	4.47	5	6.90	175252	186413	175283	187321	187449
3/8	24	9.52	7.10	67	26.0	31.0	83	40.0	8*	5.62	5	8.50	175253	186414	175284	187322	187450
7/16	20	11.11	7.95	67	31.0	36.0	83	47.0	8*	6.17	5	9.90	186252	186415	186608	187323	187451
1/2	20	12.70	9.95	76	35.0	41.0	95	54.0	10*	8.17	5	11.50	186253	186416	186609	187324	187452

PROGRAMME COMPLET FRAISES À FILETER

GW
SERIES 1000

VS

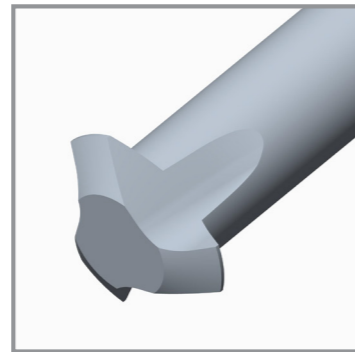


GW1116 / GW1116VS

S 0.3 – S 1.4

GW
SERIES 2000

VS



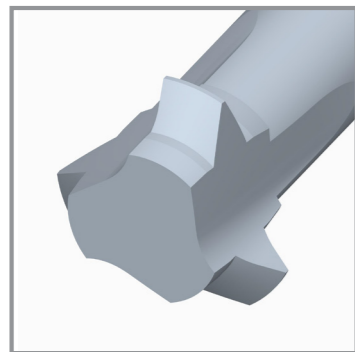
GW2016 / GW2016VS

M 0.8 – M 6

S 0.8 – S 1.4

GW
SERIES 4000

VS



GW4116 / GW4116VS

GW4119 / GW4119VS

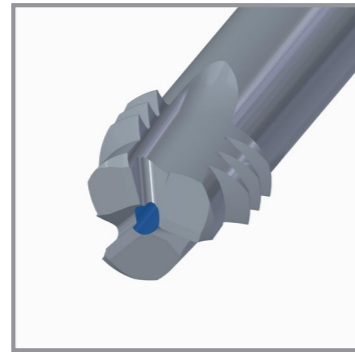
M 0.8 – M 6

UNC 2-56 – UNC 1/4-20

UNF 10-32 – UNF 1/4-28

ZBGF

VS



ZBGF6065VS / ZBGF6067VS

M 3 – M 16

UNC 4-40 – UNC 5/8-11

UNF 4-48 – UNF 5/8-18

▶ TARAUDS COUPANTS



▶ TARAUDS REFOULEUR



▶ JAUGES DE FILETAGE



▶ FRAISES À FILETER



▶ MANDRINS DE TARAUDAGE



DC SWISS SA

CH-2735 Malleray
Tel. +41 32 491 63 63
Fax +41 32 491 64 64
E-mail: info@dcswiss.ch

DC SWISS GmbH
Graseggerstraße 125
DE-50737 Köln
Tel. +49 221 995 532-0
Fax +49 221 995 532-10
E-Mail: info@dcswiss.de

DC SWISS s.r.l.
Via Canova 10
IT-20017 Rho
Tel. +39 02 669 40 41
Fax +39 02 669 78 50
E-mail: info@dcswiss.it

DC SWISS UK Ltd
9 Orgreave Road
UK-Sheffield S13 9LQ
Tel. +44 114 2939013
Fax +44 114 2880936
E-mail: info@dcswiss.co.uk

DC SWISS China
1988 Dongfang Road
CN-Shanghai 200125
Tel. +86 (0)21 610 96 296
Fax +86 (0)21 230 10 401
E-mail: info@dcswiss.cn