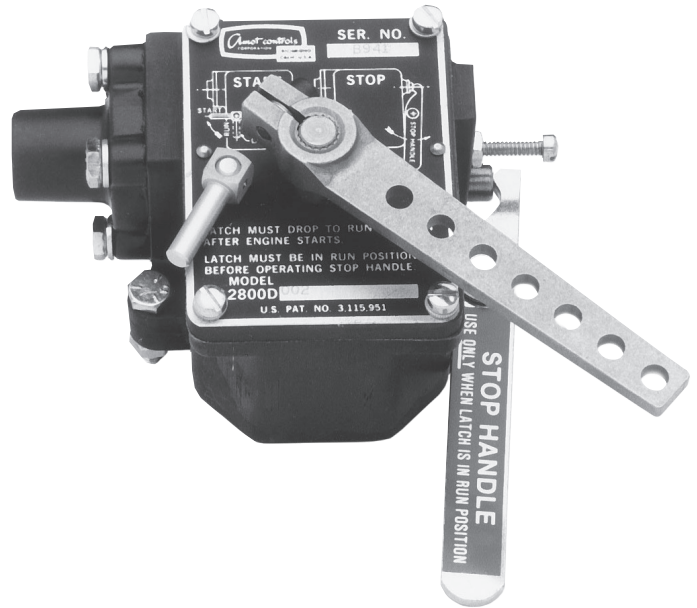


Safety Shutdown Device

Model 2800D

Typical applications

- Monitors pressure or temperature on rotating machinery in hazardous and industrial applications



Model 2800D

Key features and benefits

- Entirely mechanical
 - Requires no external power source
- Safe in hazardous area installation
- Snap acting
 - Immediate shutdown on sensed pressure loss
- Easy installation and operation

Safety Shutdown Device - Model 2800D

Contents

Overview	3
Operation	3
How to Order	3
Dimensions	4
Specification	6
Maintenance and Service Parts	6
How to order service kits	6
Service parts	6
Contact	8

Safety Shutdown Device - Model 2800D

Overview

The Model 2800 is a safety shutdown device which senses oil pressure or other control pressure. The device is typically connected to an engine fuel rack governor or fuel pump stop lever.

Should a loss or drop in oil pressure occur below the setpoint the 2800 will trip immediately.

Operation

Model 2800 may be used alone or as the engine shutdown component in an engine monitoring system. It also can be coupled with a wide array of devices for monitoring pressures, temperatures or other variables on rotating machinery, or can operate as a stand-alone oil pressure sensor.

The reset latch locks the trip lever in the "run" position until oil pressure is up to normal operating pressure, then the latch releases thus arming the device.

Model 2800 is a snap acting device monitoring low lubricating oil pressure or other control pressure. An emergency stop handle and a trip pressure adjusting screw are standard. Factory set to trip at 0.7 bar (10 psi) and field adjustable, from 0.35 - 2.8 bar (5 - 40 psi). A trip lever is installed on a splined shaft, and can be clamped in any of 36 radial positions to facilitate installation in most applications. The lever permits mechanical linkage between the tripping unit and the engine governor control, fuel pump stop lever or other mechanism.

In normal condition, the 2800 is in open position and is being held open under the system pressure. When the system pressure drops below the factory set trip pressure of 0.7 bar (10 psi), the handle rotates 90° clockwise from its position in the open condition and closes the valve. In order to reopen the valve, the handle is moved to open the valve and the reset latch is engaged, which will hold the handle while the system is pressuring. The reset latch will be released when it reaches the reset latch release pressure of 1.8 bar (26 psi) and model 2800 will be open and working under the system pressure.

Predrilled holes give a wide range of connection options. A standard reset latch is supplied.

How to Order

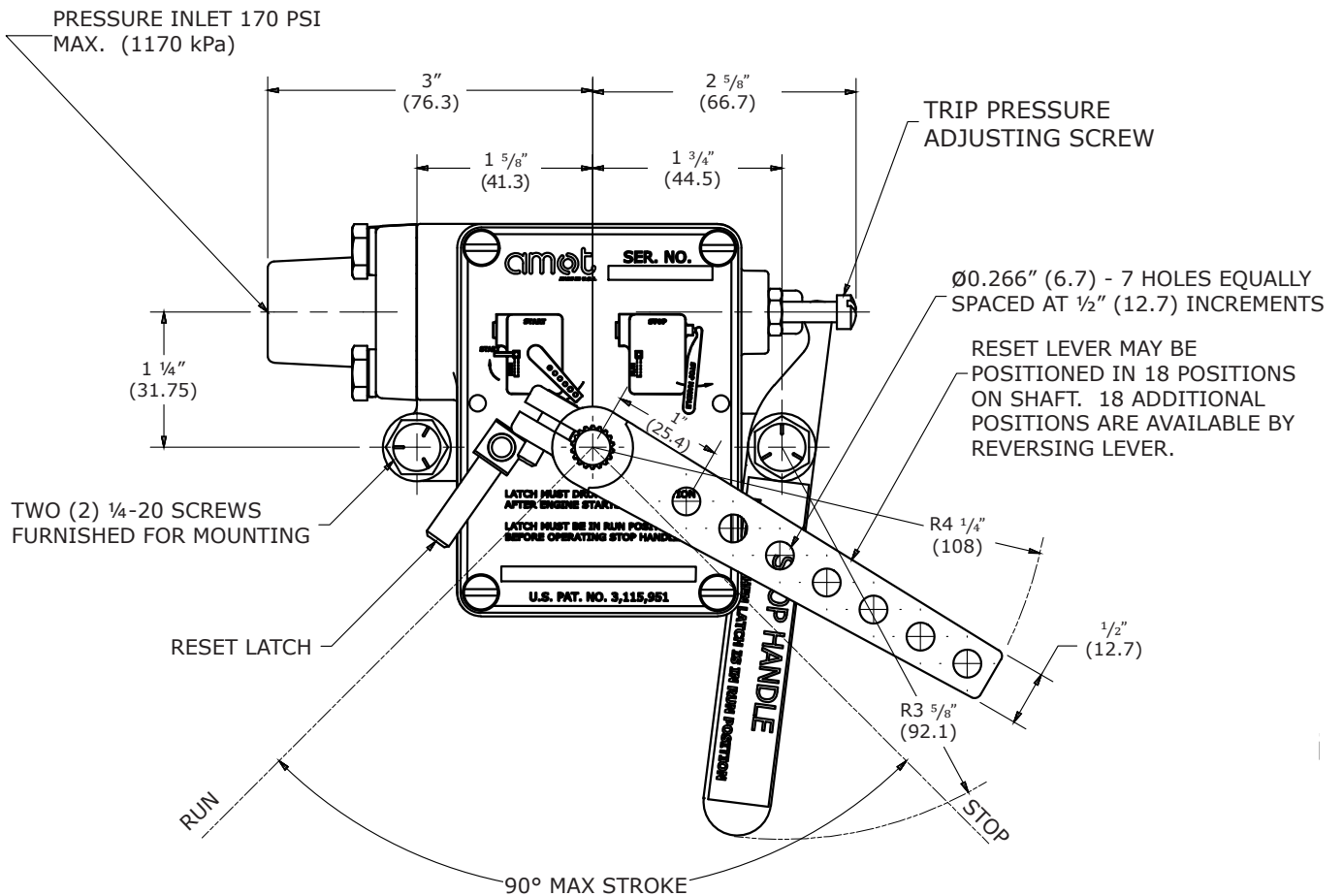
Use the table below to select the unique specification of your 2800D Safety Shutdown Device.

Example	2800D	4	1	2	Code description	Comments
					Basic model (A)	
Basic model (A)	2800D					
					Body style (B)	
Body style (B)		0			Aluminum, black anodized, front shaft	
		1			Aluminum, enamel paint, front shaft	UK ONLY
		4			Aluminum, black anodized, rear shaft	
		8				USA ONLY (special)
					Pressure connection (C)	
Pressure connection (C)		0			¼" NPT	
		1			¼" BSP PL	
		2			#6 straight thread SAE o-ring	
					Reset latch (D)	
Reset latch (D)		2			WITH reset latch	
		3			WITHOUT reset latch	UK ONLY
					Special requirements (E)	
Special Requirements (E)		-AA			Standard	May be omitted
		-***			Made-to-order	

Safety Shutdown Device - Model 2800D

Dimensions

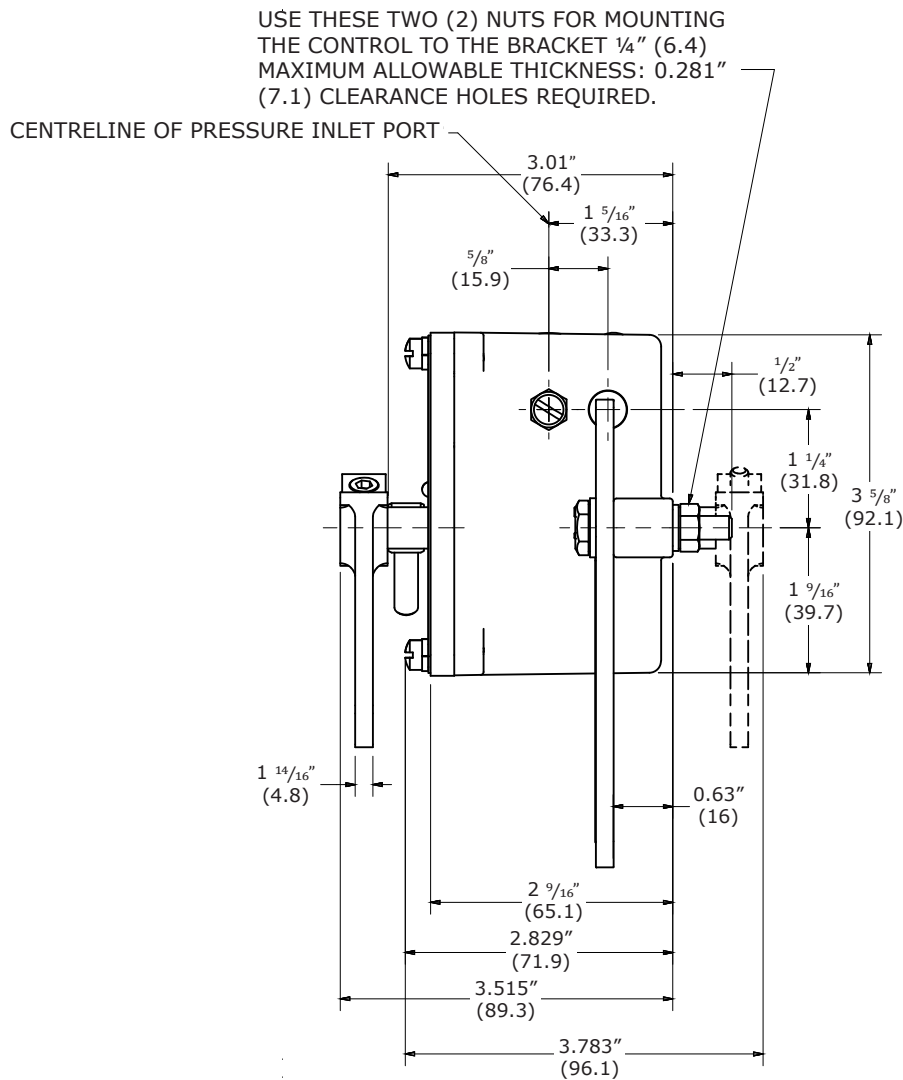
Dimensions - inches (mm)



Safety Shutdown Device - Model 2800D

Dimensions Continued

Dimensions - inches (mm)



Safety Shutdown Device - Model 2800D

Specification

		Metric units	English units
Standard materials			
Housing	Aluminum alloy dye casting		
Internals and levers	Precision steel castings		
Pressure connections	¼" NPT or BSP (PL)		
Maximum pressure at inlet		11.7 bar	170 psi
Tripping pressure adjustment range (falling pressure)		0.35 - 2.8 bar	5 - 40 psi
Factory set trip pressure**	Field adjustable	0.6 - 0.75 bar	9 - 11 psi
Reset latch release pressure (MAX)		1.8 bar	26 psi
Tripping force available	In run position at 1" (25.4 mm) radius	62.3 N	14 lbs
	In run position at 1" (25.4 mm) radius	31.1 N	7 lbs
Net weight		1 kg	2 lbs 3 oz
Shipping weight		1.36 kg	3 lbs

** If factory set trip pressure is adjusted in the field, the reset latch will release within 1.17 bar (17 psi) above the field adjusted trip pressure

Maintenance and Service Parts

Over time, exposure to prolonged operation at extreme conditions may reduce the effectiveness of the safety shutdown device. At such time, AMOT Model 2800D Safety Shutdown Devices can be restored to original performance by installing an AMOT safety shutdown device service kit. Service kits include all new seals, diaphragm and gasket required for normal maintenance.

How to order service kits

Service kits are available with seals, diaphragm and gasket required to service the valve.

AMOT designs and tests all its products to ensure that high quality standards are met. For good product life, carefully follow the installation and maintenance instructions; failure to do so could result in damage to the equipment being protected or controlled.

All 2800D Safety Shutdown Devices require the same service kit **10049X**.

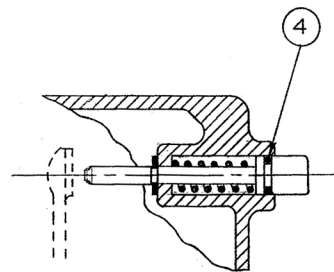
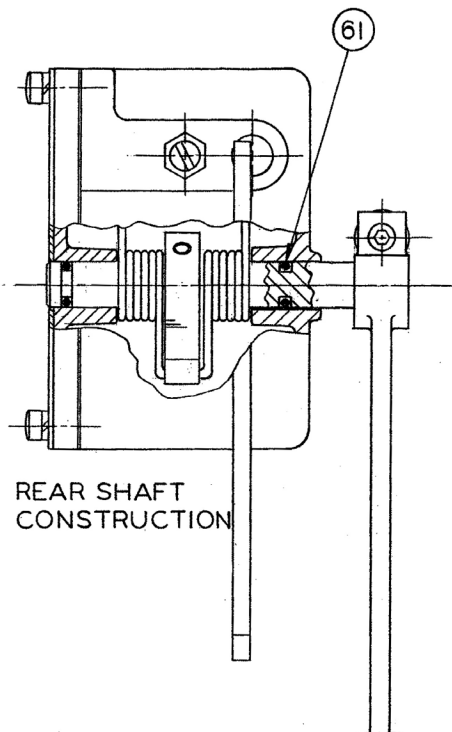
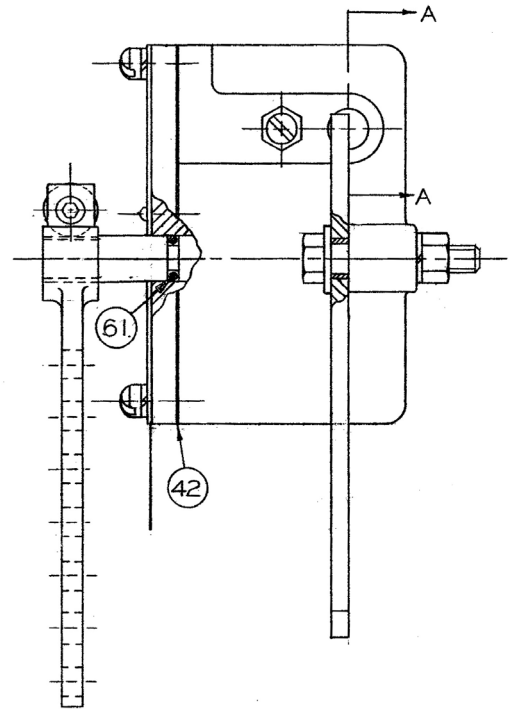
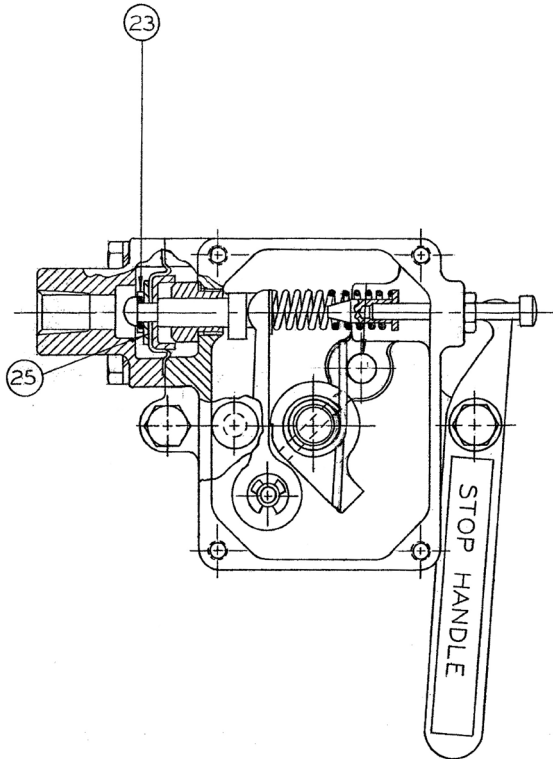
Service parts (refer to diagrams on page 7)

Service kit parts		
Ref no.	Qty.	Description
4	1	Plunger seal
23	1	Seal
25	1	Diaphragm
42	1	Gasket
53	1	Reset latch seal
61	2	Trip shaft seals

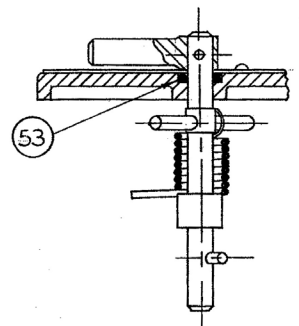
Safety Shutdown Device - Model 2800D

Maintenance and Service Parts Continued

Service parts continued



Section A4



Reset Latch

Safety Shutdown Device - Model 2800D

Contact

Americas

AMOT USA
8824 Fallbrook Dr.
Houston, TX 77064
USA

Tel: +1 (281) 940 1800
Fax: +1 (713) 559 9419
Email: customer.service@amot.com

Europe, Middle East and Africa

AMOT UK
Western Way
Bury St. Edmunds
Suffolk, IP33 3SZ
England

Tel: +44 1284 715739
Fax: +44 1284 760256
Email: info@amot.com

AMOT Germany
Rondenbarg 25
22525 Hamburg
Germany

Tel: +49 40 8537 1298
Fax: +49 40 8537 1331
Email: germany@amot.com

Asia Pacific

AMOT Shanghai
Bd. 7A, No. 568, Longpan Rd., Malu Jiading
Shanghai 201801
China

Tel: +86 21 5910 4052
Fax: +86 21 5237 8560
Email: shanghai@amot.com



WARNING

This product can expose you to chemicals including Lead, which is known to the state of California to cause cancer and birth defects or other reproductive harm. For more information go to www.P65Warnings.ca.gov.