

SECURING SOLUTIONS FOR YOUR BUSINESS

Volume 1  
**HVAC**  
CATALOG

Enginia Products distributed in North America by:





## About Austin Hardware & Supply, Inc.

Since 1960, Austin Hardware has always gone the extra mile to give our customers a competitive edge in their markets. We call it The Austin Advantage. From products to pricing, here's what it means to you:

### *Top Quality*

Dedication to quality is one reason why Austin is now the leading source for industrial and vehicular hardware in the country. Before we add any item to our line, we make sure it meets our standards. We examine its design, engineering and manufacturing detail. We even rate it for superior ergonomics and aesthetic appeal. If that item bares a place in our line, you can be proud to make it part of your product.

### *Greater Versatility*

Nobody offers you a greater hardware selection for the widest range of applications across more industry categories than Austin Hardware. More in-stock selection means more on-time solutions. Whatever your hardware needs, Austin is the right call every time.

### *Better Technical Support*

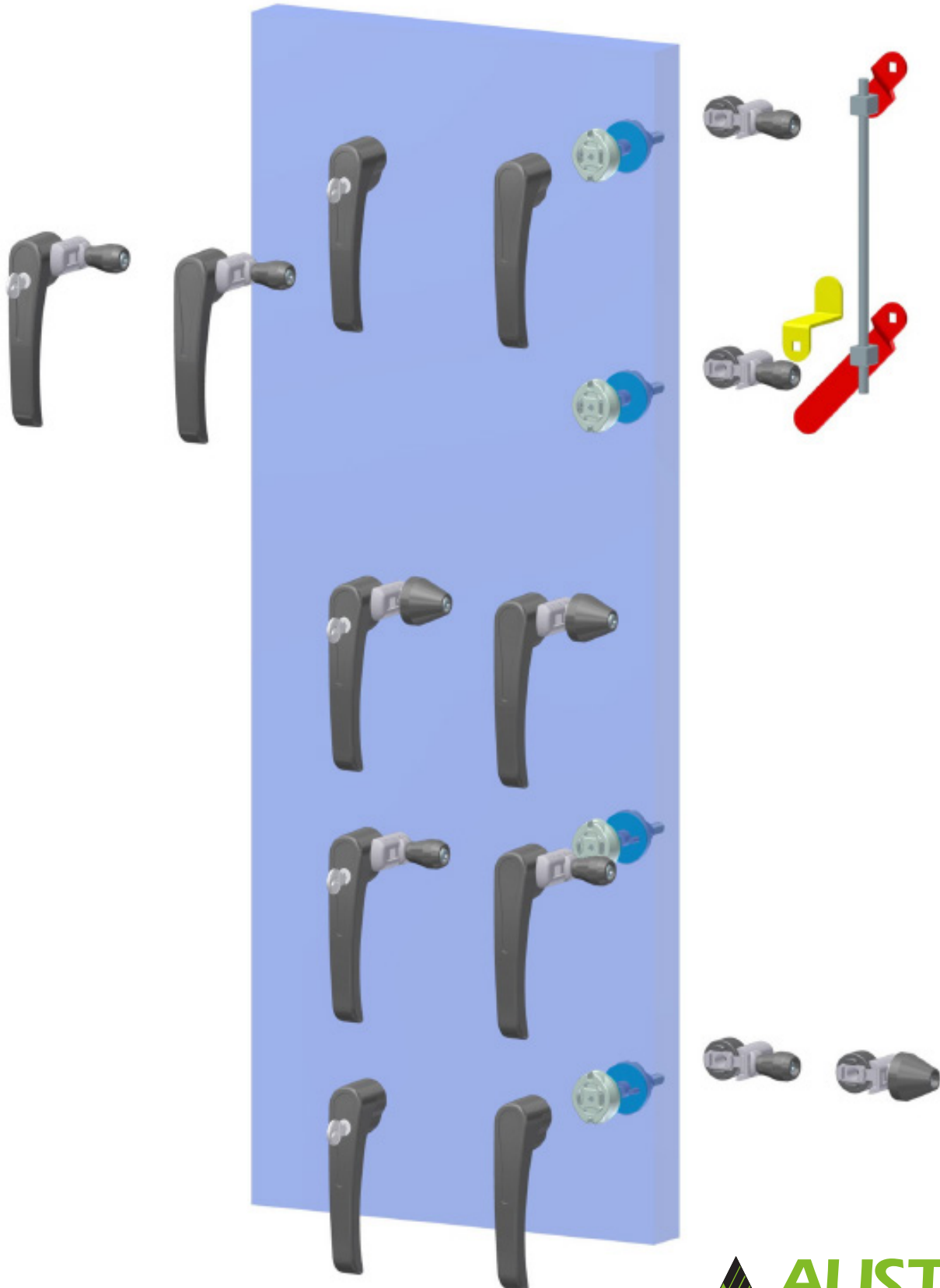
Austin Hardware employs the most knowledgeable, experienced and courteous industrial and vehicular hardware specialists in our industry. Our Sales and Customer Service teams are highly qualified to assist you in choosing the right hardware solution for your application. Austin is also one of the few companies in our business with an in-house staff of professional design engineers. When you need custom solutions, we can deliver -- working closely with you from design to manufacture to implementation.

### *Competitive Pricing*

As an Austin Hardware customer, you can count on our total commitment to helping your product gain a competitive edge. That includes supplying top-quality hardware at the lowest possible prices -- a combination that your competitors will find hard to match.

### *Fast, Economical and Accurate*

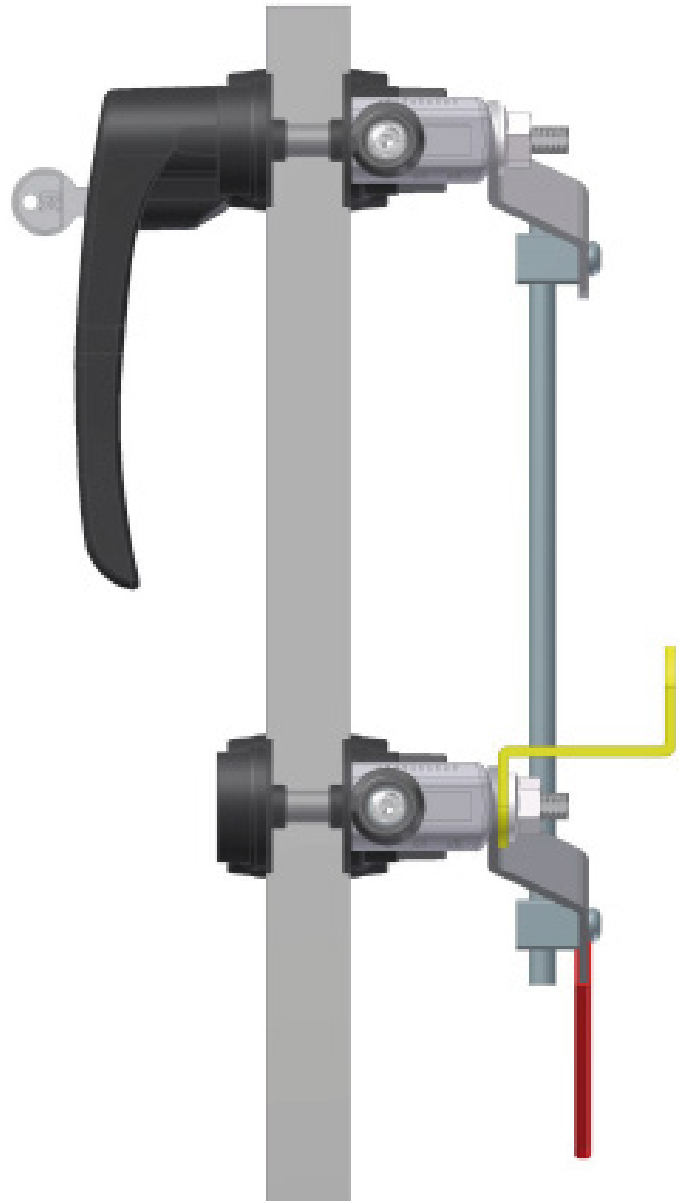
With same day shipping for most orders placed by 5 p.m., and full-stocking locations in California, Georgia, Indiana, Missouri, Pennsylvania, Texas and Wisconsin, we are able to ensure fast, economical delivery. Our 10 locations enable us to reach over 90% of the U.S. in 1 or 2 days by economical UPS Ground service. We also ensure accuracy by double-checking the part number and quantity of every order we ship.



### IN-SWING



### OUT-SWING



The HVC170 latching system has been designed for insulated double skinned doors for HVAC applications.

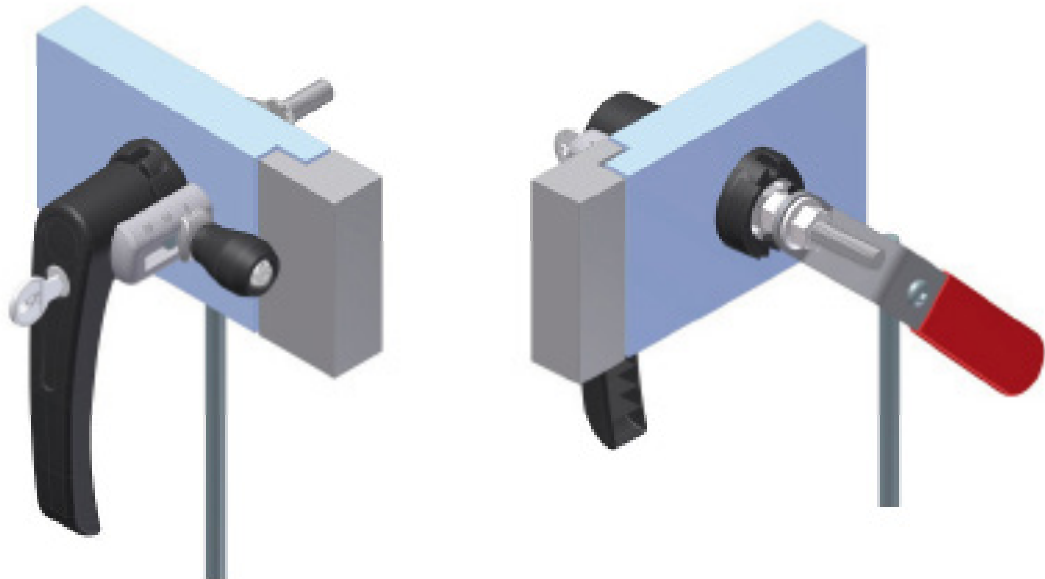
Fast and easy to install, the HVC170 can be provided with or without key locking and a complete range of different parts, such as security inside handle, safety catches for positive pressure doors, and multi-points rod linkage. The adjustable roller cams insure smooth closing and proper compression of the gasket, and can be used for inswing or outswing operation.



# LATCHING SYSTEMS

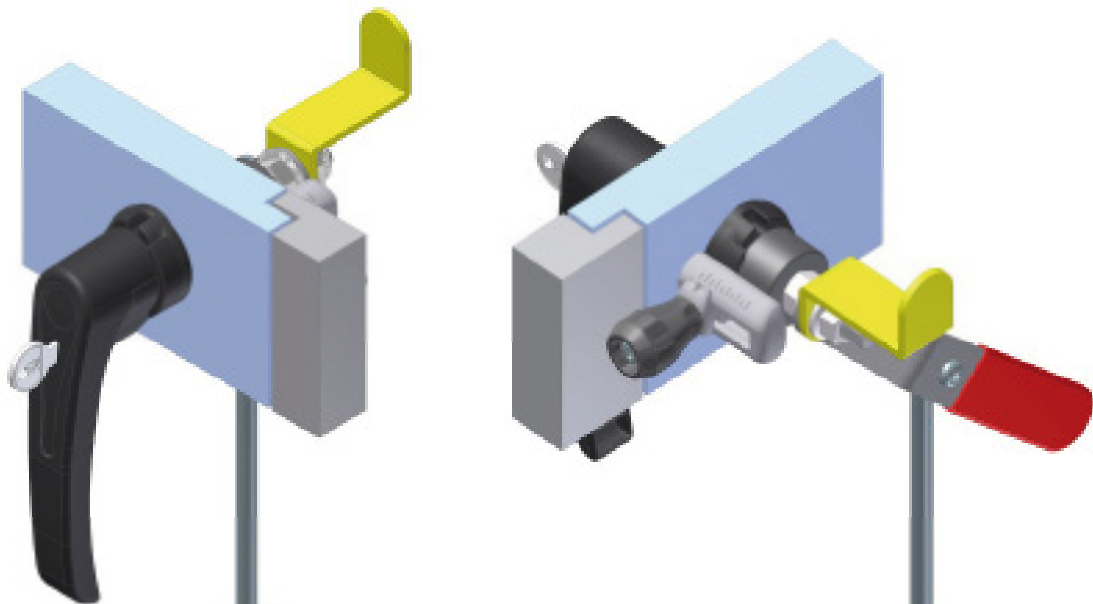
## HVC170

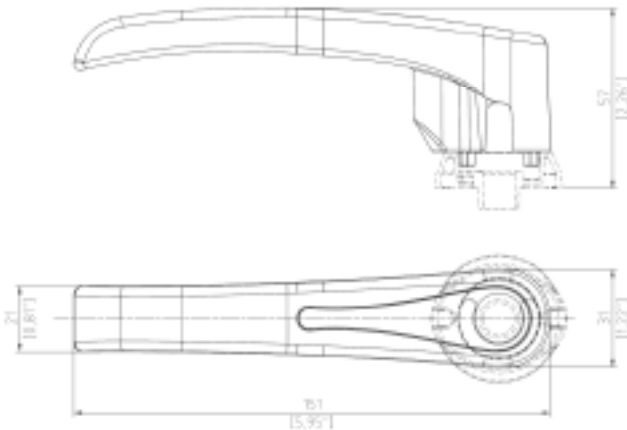
Certified according to ISO 9001 : 2008  
All products ROHS-compliant



### FEATURES

- Removable handle to avoid breakage during transportation of the AHU
- Rolling latch for smooth, non-scratching closing
- Adjustable latch for proper gasket compression
- Safety catch for positive pressure doors
- Inside handle kit available when needed
- Plastic handle, with or without key





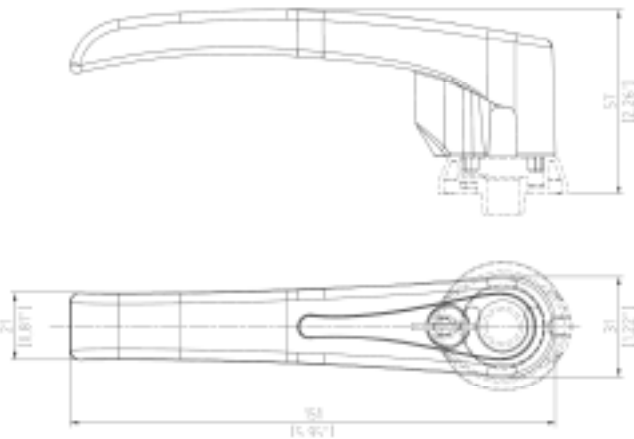
HANDLE WITHOUT LOCK		PCS BOX
P/N	TYPE	
HVC170-I01	WITHOUT ROLLER CAM	50
HVC170-I02	WITH SMALL ADJUSTABLE ROLLER CAM	
HVC170-I03	WITH BIG ADJUSTABLE ROLLER CAM	
HVC170-I17	WITH SMALL FIXED ROLLER CAM	
HVC170-I18	WITH BIG FIXED ROLLER CAM	

**MATERIAL:**

Handle: Glass fiber reinforced polyamide (PA6), black.

Roller cam: zinc die-cast, glass fiber reinforced polyamide (PA6).

Screw: Steel, zinc plated.



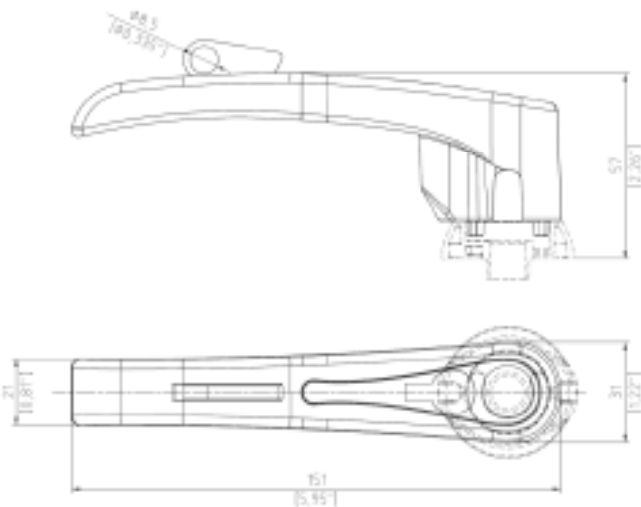
HANDLE WITH LOCK		PCS BOX
P/N	TYPE	
HVC170-I04	WITHOUT ROLLER CAM	50
HVC170-I05	WITH SMALL ADJUSTABLE ROLLER CAM	
HVC170-I06	WITH BIG ADJUSTABLE ROLLER CAM	
HVC170-I19	WITH SMALL FIXED ROLLER CAM	
HVC170-I20	WITH BIG FIXED ROLLER CAM	

**MATERIAL:**

Handle: Glass fiber reinforced polyamide (PA6), black.

Roller cam: zinc die-cast, glass fiber reinforced polyamide (PA6).

Screw: Steel, zinc plated.



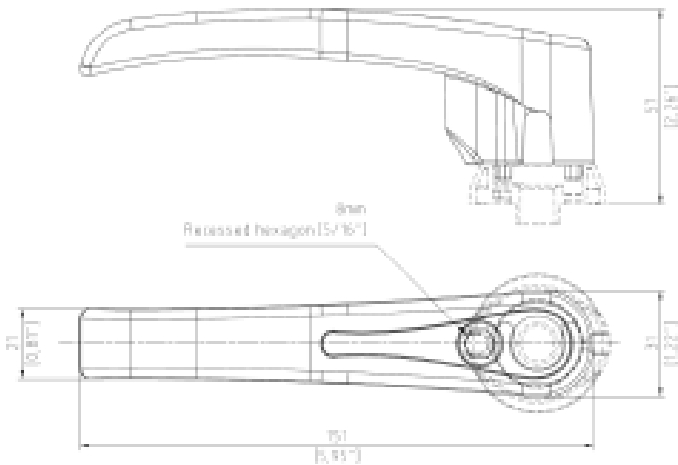
PADLOCKABLE HANDLE		PCS BOX
P/N	TYPE	
HVC170-I11	WITHOUT ROLLER CAM	50
HVC170-I12	WITH SMALL ADJUSTABLE ROLLER CAM	
HVC170-I13	WITH BIG ADJUSTABLE ROLLER CAM	
HVC170-I21	WITH SMALL FIXED ROLLER CAM	
HVC170-I22	WITH BIG FIXED ROLLER CAM	

**MATERIAL:**

Handle: Glass fiber reinforced polyamide (PA6), black.

Roller cam: zinc die-cast, glass fiber reinforced polyamide (PA6).

Screw: Steel, zinc plated.



TOOL OPERATED HANDLE		PCS BOX
P/N	TYPE	
HVC170-I14	WITHOUT ROLLER CAM	50
HVC170-I15	WITH SMALL ADJUSTABLE ROLLER CAM	
HVC170-I16	WITH BIG ADJUSTABLE ROLLER CAM	
HVC170-I23	WITH SMALL FIXED ROLLER CAM	
HVC170-I24	WITH BIG FIXED ROLLER CAM	

**MATERIAL:**

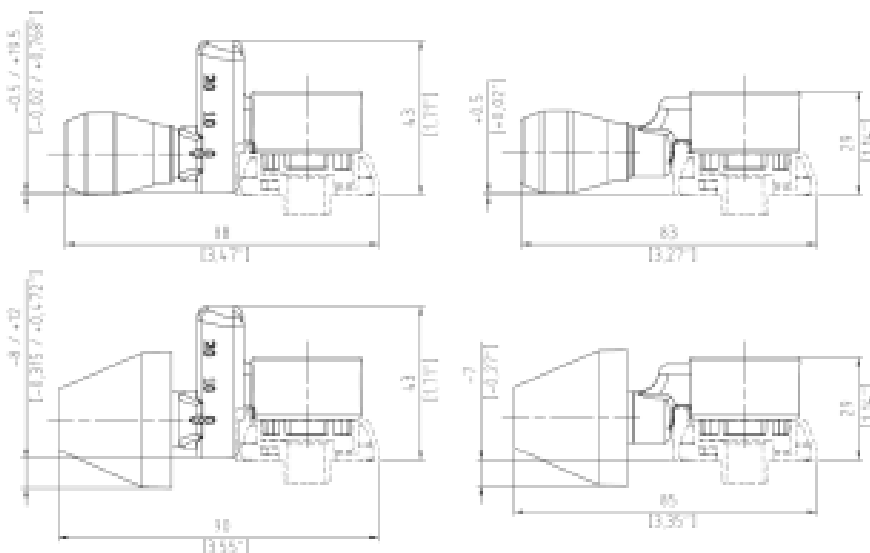
Handle: Glass fiber reinforced polyamide (PA6), black.

Roller cam: zinc die-cast, glass fiber reinforced polyamide (PA6).

Screw: Steel, zinc plated.

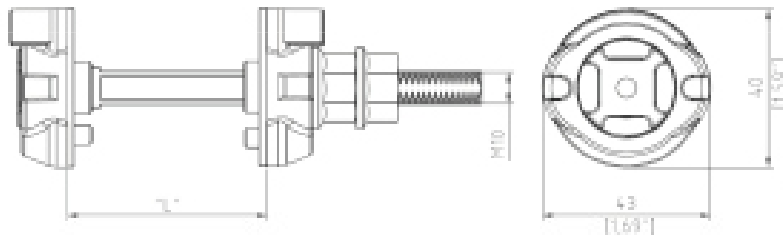


ROLLER CAM		PCS BOX
P/N	TYPE	50
HVC170-S01	SMALL ADJUSTABLE ROLLER	
HVC170-S02	BIG ADJUSTABLE ROLLER	
HVC170-S03	SMALL FIXED ROLLER	
HVC170-S04	BIG FIXED ROLLER	



**MATERIAL:**

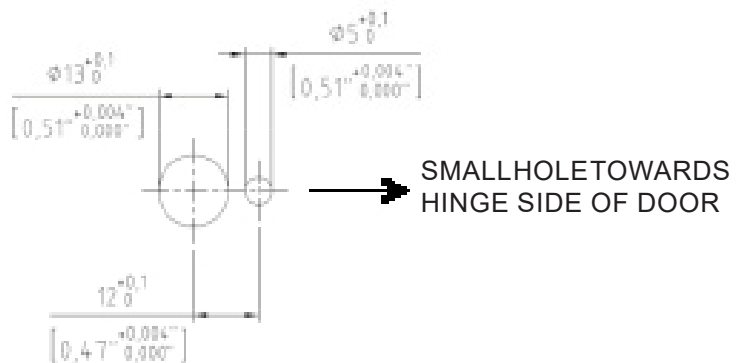
Roller cam: Zinc die-cast, zinc plated, steel, zinc plated and glass fiber reinforced polyamide (PA6), black.

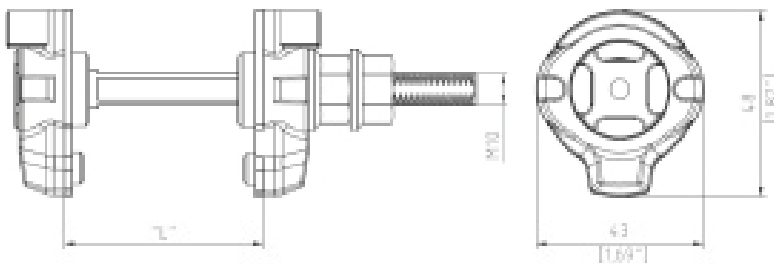


**MATERIAL:**

- Shaft: Zinc die-cast, zinc plated.
- Housing: Zinc die-cast, zinc plated.
- Collar : Glass fiber reinforced polyamide (PA6).
- Nut and washer: Steel, zinc plated.
- Gasket: PU

LATCHING UNITS TYPE 1		
P/N	DOOR THICKNESS "L"	Pcs/Box
HVC170-B01	25/35 (0.98/1.37)	50
HVC170-B02	40/50 (1.57/1.96)	
HVC170-B03	60/75 (2.36/2.95)	
HVC170-B04	95/105 (3.74/4.13)	

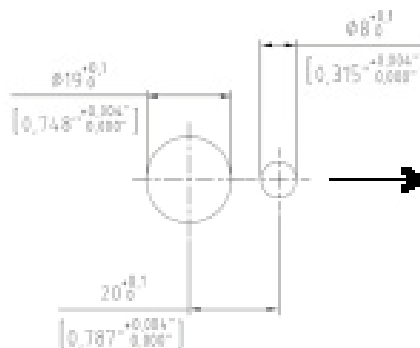




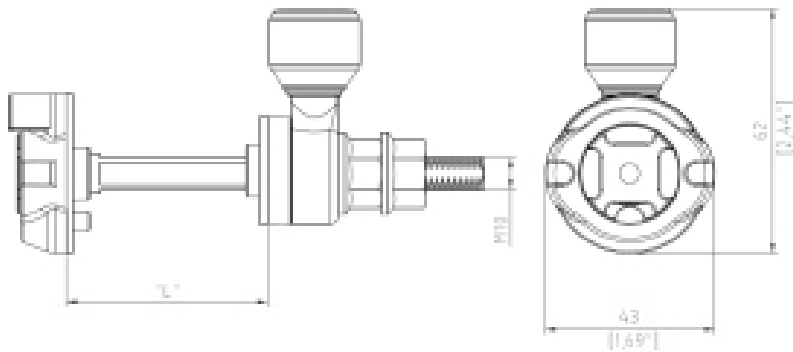
**MATERIAL:**

Shaft: Zinc die-cast, zinc plated.  
Collar : Glass fiber reinforced polyamide (PA6).  
Nut and washer: Steel, zinc plated.  
Gasket: PU

LATCHING UNITS TYPE 2		
P/N	DOOR THICKNESS "L"	Pcs/Box
HVC170-B09	25/35 (0.98/1.37)	50
HVC170-B10	40/50 (1.57/1.96)	
HVC170-B11	60/75 (2.36/2.95)	
HVC170-B12	95/105 (3.74/4.13)	



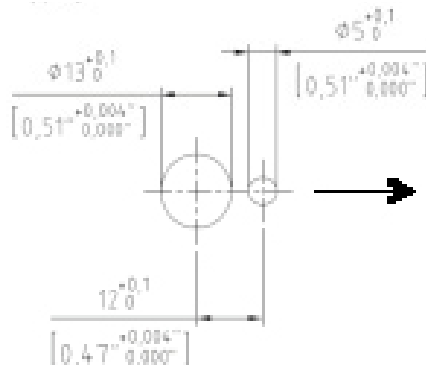
SMALL HOLE TOWARDS  
HINGE SIDE OF DOOR



**MATERIAL:**

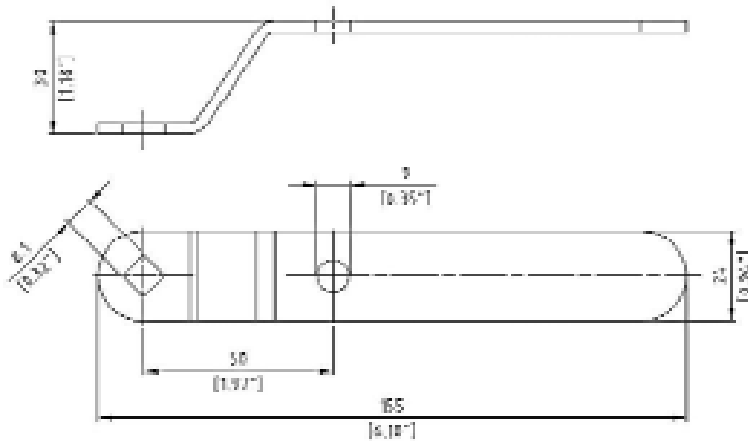
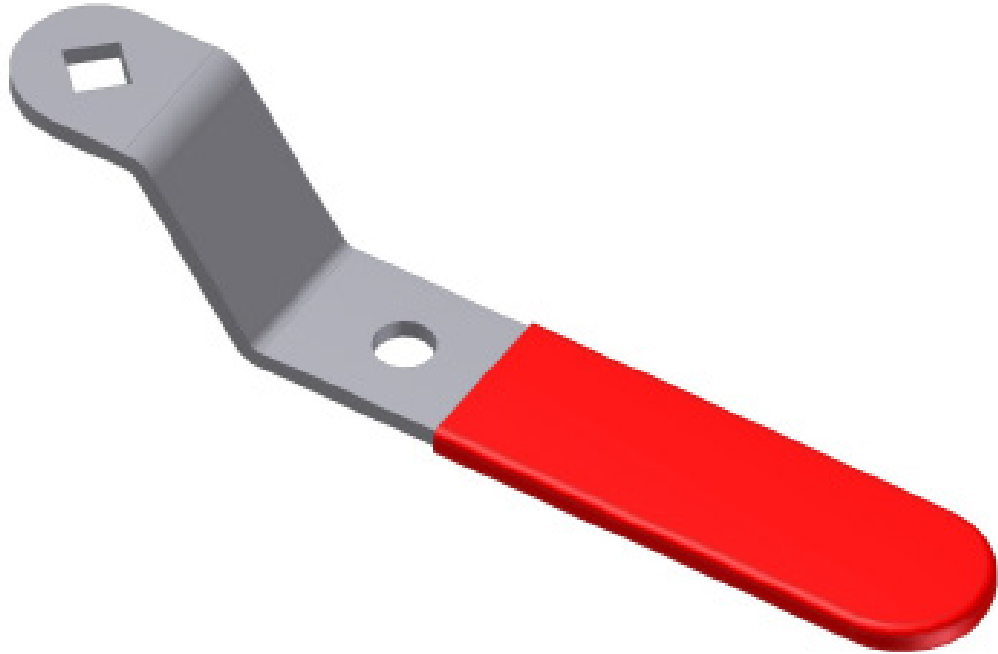
- Shaft: Zinc die-cast, zinc plated.
- Housing: Zinc die-cast, zinc plated.
- Collar : Glass fiber reinforced polyamide (PA6).
- Nut and washer: Steel, zinc plated.
- Roller cam: Zinc die-cast, zinc plated, steel, zinc plated and glass fiber reinforced polyamide (PA6), black.
- Gasket: PU

LATCHING UNITS TYPE 3		
P/N	DOOR THICKNESS *L*	Pcs/Box
HVC170-B13	25/35 (0.98/1.37)	50
HVC170-B14	40/50 (1.57/1.96)	
HVC170-B15	60/75 (2.36/2.95)	
HVC170-B16	95/105 (3.74/4.13)	



SMALL HOLE TOWARDS HINGE SIDE OF DOOR





**MATERIAL:**  
Inside security handle: Steel with red PVC coating.

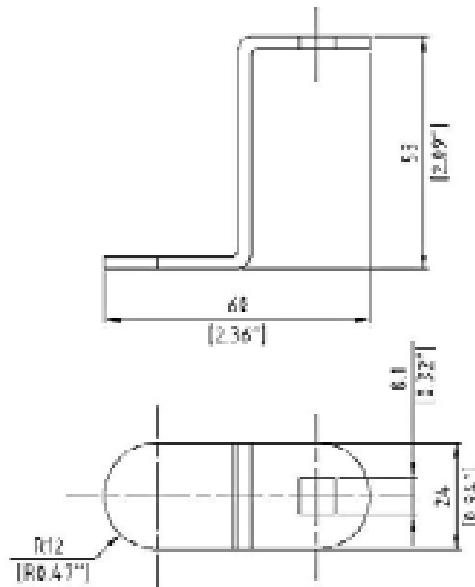
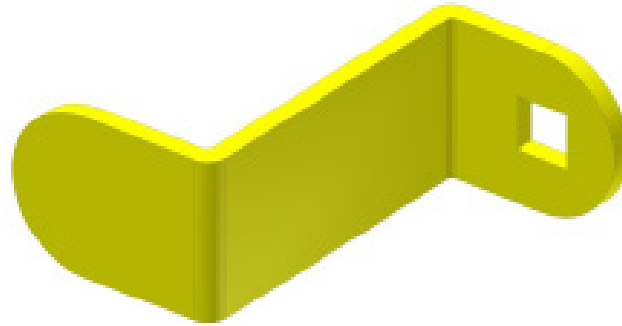
INSIDE SECURITY HANDLE		
P/N	TYPE	Pcs/Box
HVC170-MI1	Security Handle	50



# LATCHING SYSTEMS

## HVC170

Certified according to ISO 9001 : 2008  
All products ROHS-compliant



MATERIAL:  
Safety catch: Steel with yellow powder coat.

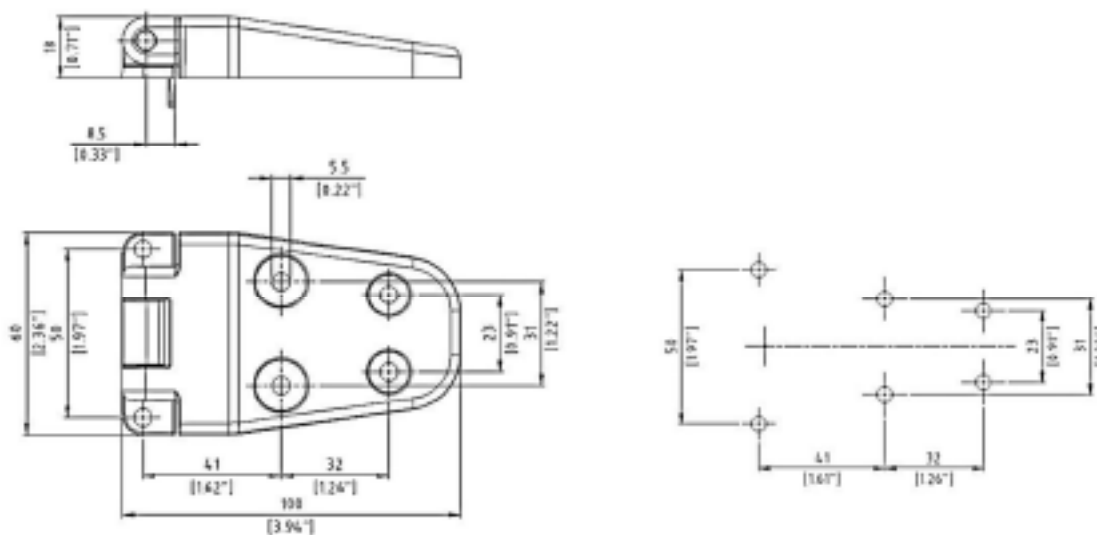
SAFETY CATCH		
P/N	TYPE	Pcs/Box
HVC170-LS1	Safety Catch	50



Universal LH / RH



Opening angle



## ZINC DIE-CAST HINGE FOR INSULATED DOORS

In addition to the traditional plastic hinges, Enginia has developed a new die-cast zamak hinge, with a simple and elegant design, small dimensions, but sturdy and precise. Easy and fast to install, it is ideal for small-medium size doors, where metal hinges are required. To provide excellent weather resistance, the HVC-HG-CFG370 is supplied galvanized or powder coated. Special coating for salt mist application on request.

Zinc die-cast for insulated doors.

Opening 180°.

Universal right or left mounting.

Rivet or screw mounting.

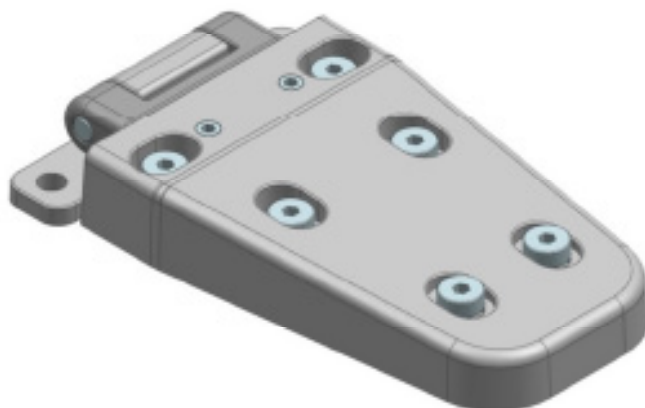
### MATERIAL

Door and frame part: Zinc die-cast

Pin: steel, zinc plated.

### ZINC DIE-CAST HINGE FOR INSULATED DOORS

P/N	Type	Pcs/Box
HVC-HG-CFG370-001	Zinc plated	50
HVC-HG-CFG370-002	Zinc die-cast	



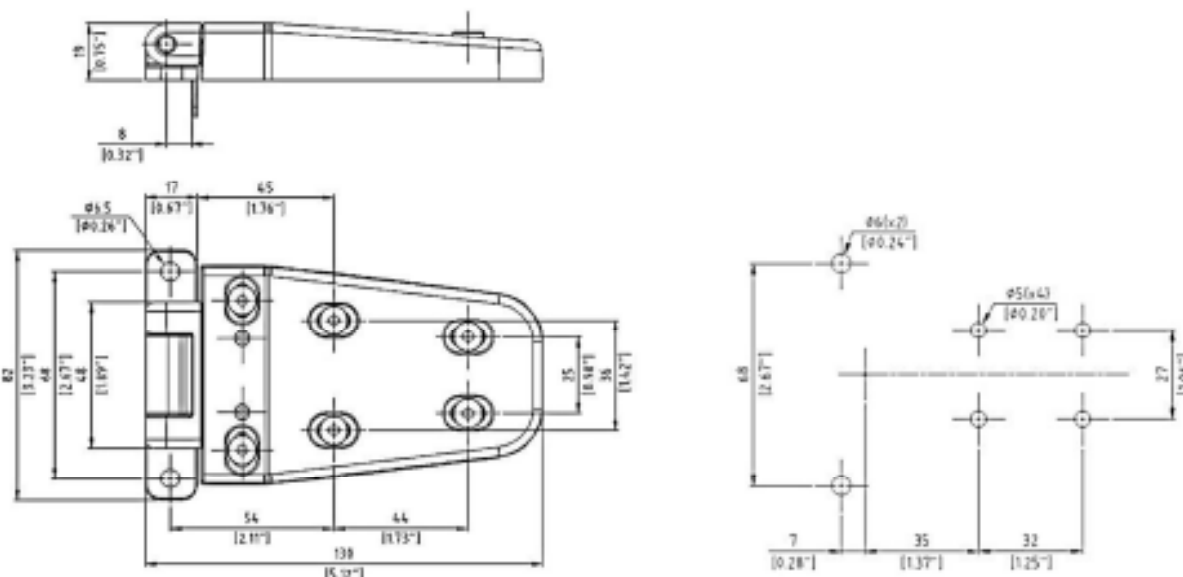
Universal LH / RH



Opening angle



Adjustable X,Y and Z



## ZINC DIE-CAST HINGE FOR INSULATED DOORS

Designed for installation on medium-large doors, the new HVC-HG-CFG470 hinge has been sized for strength and produced in whole die-cast zamak material. Provided with a 3 axis adjusting mechanism, it allows for correct positioning of the door even in case of door frame distortion. To provide excellent weather resistance, the HVC-HG-CFG470 is supplied galvanized or powder coated. Special coating for salt mist application on request.

Zinc die-cast for insulated doors.  
Opening 180°.  
Universal right or left mounting.  
Rivet or screw mounting.

### MATERIAL

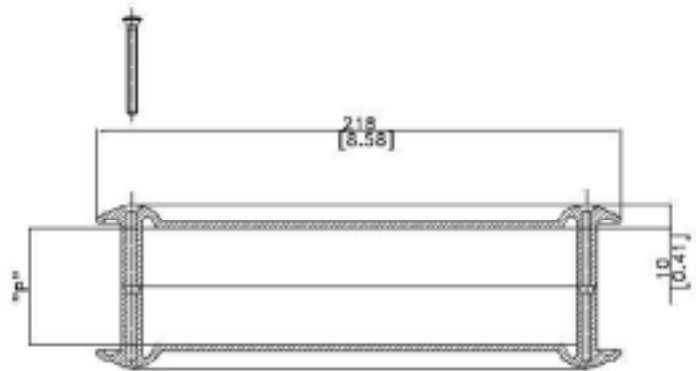
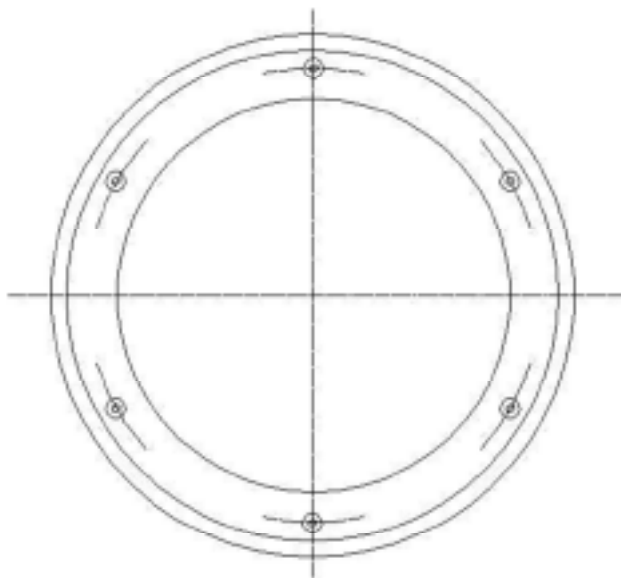
Door and frame part: Zinc die-cast  
Pin: steel, zinc plated.

### ZINC DIE-CAST HINGE FOR INSULATED DOORS

P/N	Type	Pcs/Box
HVC-HG-CFG470-R01	Zinc plated	50
HVC-HG-CFG470-R02	Black	



HVC-OBP - Design and performance not exceeded by competition. The HVC-OBP series inspection windows represent products of the highest quality. The perfect transparency is guaranteed through time by the use of first quality polycarbonate, compounded for UV resistance, and the generous thermoplastic rubber gaskets ensure a perfect air and water seal, in any condition. The assembly, fast and without drilling into the panel, is achieved through the supplied screws. HVC-OBP's are available for panels from 20 to 60mm and for different thicknesses on request. The OBP has been tested by the ILH laboratory of hygiene in Berlin, and are certified to comply with the standard hygienic applications VDI6022.

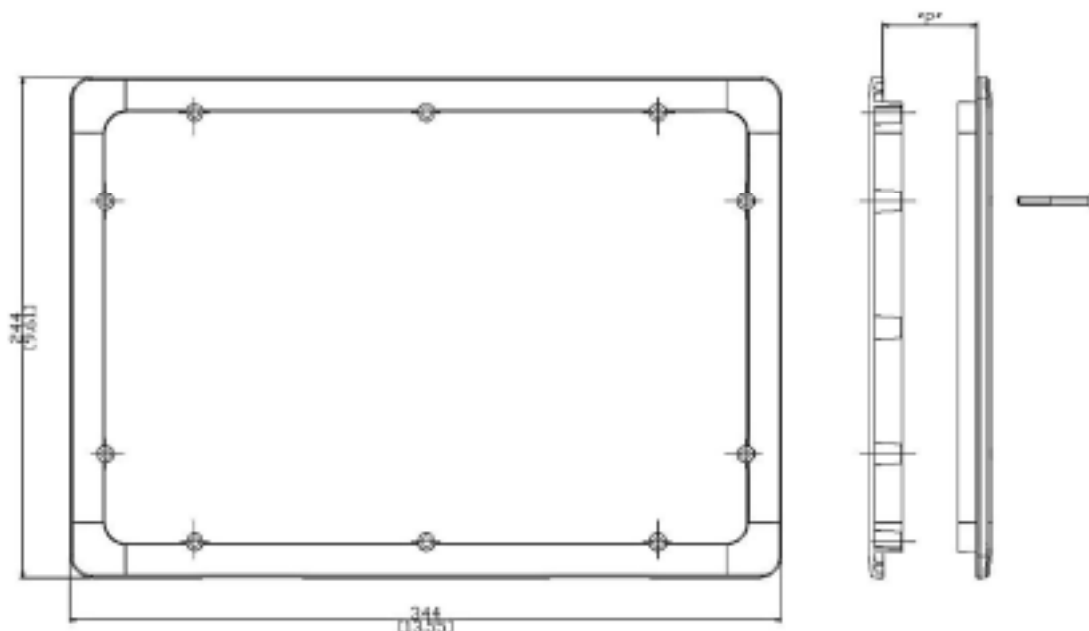


Other panel thicknesses on request

P/N	Panel inches	Material	P inches	Weight lb.	Pcs/Box
HVC-OBP20. 0000	0.78"	UV stabilized Polycarbonate	0.71"	0.677	50
HVC-OBP25. 0000	1"	UV stabilized Polycarbonate	0.91"	0.683	43
HVC-OBP30. 0000	1.18"	UV stabilized Polycarbonate	1.14"	0.717	35
HVC-OBP35. 0000	1.37"	UV stabilized Polycarbonate	1.22"	0.75	35
HVC-OBP40. 0000	1.57"	UV stabilized Polycarbonate	1.54"	0.794	30
HVC-OBP45. 5000	2"	UV stabilized Polycarbonate	1.18"	0.805	28
HVC-OBP60. 0000	2.36"	UV stabilized Polycarbonate	2.28"	0.882	20



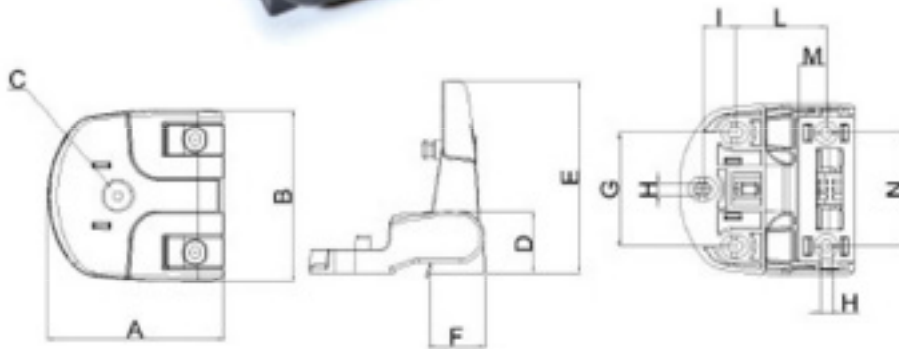
HVC-OBP-R - The rectangular port-hole HVC-OBP.R is used when a wider view through the door is needed. The highest materials quality guarantees a perfect air and water seal through time and in any condition. The assembly, fast and without drilling into the panel, is achieved through the supplied screws. HVC-OBP.R's are available for panels from 20 to 60 mm and for different thicknesses on request. The HVC-OBP has been tested by the ILH laboratory of hygiene in Berlin, and are certified to comply with the standard hygienic applications VDI6022.



P/N	Panel inches	Material	P Inches	Weight lb.	Pcs/Box
HVC-OBP.R.2500	1"	UV stabilized Polycarbonate	0.94"	1.951	20
HVC-OBP.R.3000	1.18"	UV stabilized Polycarbonate	1.11"	1.973	19
HVC-OBP.R.3500	1.37"	UV stabilized Polycarbonate	1.31"	2.008	17
HVC-OBP.R.4000	1.57"	UV stabilized Polycarbonate	1.50"	2.061	17
HVC-OBP.R.4500	1.77"	UV stabilized Polycarbonate	1.70"	2.138	15
HVC-OBP.R.5000	2"	UV stabilized Polycarbonate	1.90"	2.205	15
HVC-OBP.R.6000	2.36"	UV stabilized Polycarbonate	2.29"	2.238	11



As the pictures show, the breakthrough technology incorporated into the newly designed "HVC-HG-DUAL" hinge allows any door to open from the left, from the right, or be completely removed altogether thus making it much easier on engineering design. This new system greatly reduces inventory and availability requirements as well as the pre-drilling and installation procedures.



Right Opening

Left Opening



Panel Removing

P/N	Color	C	Material	Weight lb.	Elasticity modulus	mm. / inches											Pcs/ Box
						A	B	D	E	F	G	H	I	L	M	N	
HVC-HG-DUAL.01B01	Black	Exagonal 4 mm.	Nylon + Fiberglass PA6 F.V.50%	0.251	1200 N/m <sup>2</sup>	81 / 3.18	79 / 3.11	28 / 1.10	88 / 3.46	26 / 1.02	52 / 2.04	5.5 / 0.21	15 / 0.59	42 / 1.65	12.5 / 0.49	52 / 2.04	50
HVC-HG-DUAL.01B02	Black	Key	Nylon + Fiberglass PA6 F.V.50%	0.251	1200 N/m <sup>2</sup>	81 / 3.18	79 / 3.11	28 / 1.10	88 / 3.46	26 / 1.02	52 / 2.04	5.5 / 0.21	15 / 0.59	42 / 1.65	12.5 / 0.49	52 / 2.04	
HVC-HG-DUAL.02B01	Black	Exagonal 4 mm.	Nylon + Fiberglass PA6 F.V.50%	10.357	1200 N/m <sup>2</sup>	90 / 3.54	98 / 3.85	30 / 1.18	98 / 3.85	28.5 / 1.12	71.5 / 2.81	5.5 / 0.21	15 / 0.59	46 / 1.81	14 / 0.55	64 / 2.51	
HVC-HG-DUAL.02B02	Black	Key	Nylon + Fiberglass PA6 F.V.50%	0.357	1200 N/m <sup>2</sup>	90 / 3.54	98 / 3.85	30 / 1.18	98 / 3.85	28.5 / 1.12	71.5 / 2.81	5.5 / 0.21	15 / 0.59	46 / 1.81	14 / 0.55	64 / 2.51	



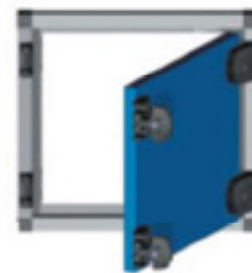
Our HVC-HG-DUAL hinge-handle represents an evolution as our new model has been designed to protect the operator from accidentally opening any pressurized door. The ingeniously designed locking system will not let the door to swing wide open allowing the system to depressurize or the operator to turn the fan off, then, with a simple slide of the spring loaded pin, the door can be fully opened. While closing back the door, the locking mechanism will rearm itself without the operator intervention.



Right Opening



Left Opening

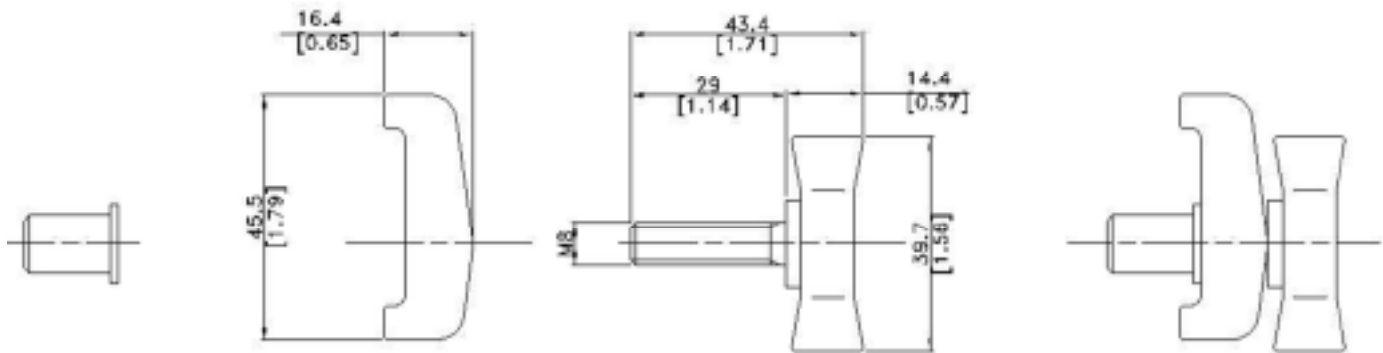


Panel Removing

P/N	Color	C	Material	Weight lb.	Elasticity modulus	mm. / inches										Pcs/ Box	
						A	B	D	E	F	G	H	I	L	M		N
HVC-HG-DUALSTOP01	Black	Exagonal 4 mm.	Nylon + Fiberglass PA6 F.V.50%	0.251	1200 N/m <sup>2</sup>	81 / 3.18	79 / 3.11	28 / 1.10	88 / 3.46	26 / 1.02	52 / 2.04	5.5 / 0.21	15 / 0.59	42 / 1.65	12,5 / 0.49	52 / 2.04	50
HVC-HG-DUALSTOP02	Black	Key	Nylon + Fiberglass PA6 F.V.50%	0.251	1200 N/m <sup>2</sup>	81 / 3.18	79 / 3.11	28 / 1.10	88 / 3.46	26 / 1.02	52 / 2.04	5.5 / 0.21	15 / 0.59	42 / 1.65	12,5 / 0.49	52 / 2.04	



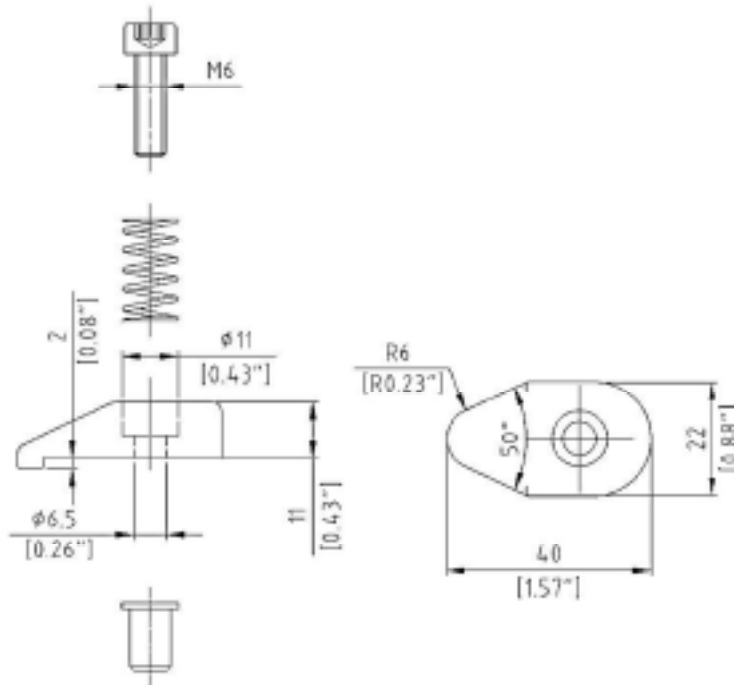
HVC-B50FGC - The HVC-B50 panel blocks are the most practical solution to build a removable panel. With a threaded insert that is placed in the frame of the AHU structure, the panel can be easily compressed against the sealing gasket by turning the butterfly closures. To remove the panel, it is only necessary to release the butterfly.



P/N	HVC-B50FGC.000	HVC-B50FGC.003
Plastic	Nylon + Fiberglass PA6 FV30%	Nylon + Fiberglass PA6 FV30%
Screw & Nut	Steel Zinc Plated	Steel Zinc Plated
Pcs/Box	150	



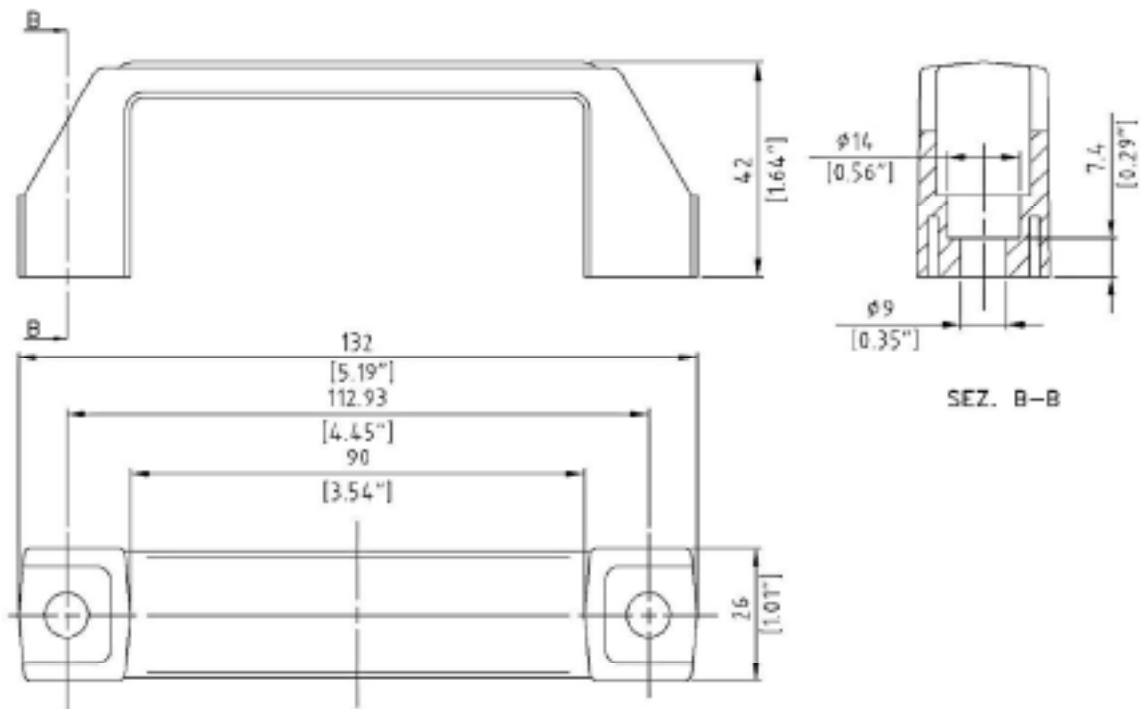
HVC-B40 - Reduced dimensions and attractive design of the HVC-B40 panel blocks allow you to fix the panels that must be removed very easily and quickly. The spring loaded mechanism allows you to attach the panel and at the same time, to rotate the panel blocks themselves, for removal.



P/N	HVC-B40FG-0000
Plastic	Nylon + Fiberglass PA6 FV20%
Screw & Nut	Steel Zinc Plated
Pcs/Box	150



The HVC 85 handle are used on removable panels together with the blocking panels system. They are attached to the panel with metric screws and provide a comfortable and safe grip.



P/N	HVC 8500000
Material	Nylon
Type	PA6 Black
Pcs/Box	100





[www.AustinHardware.com](http://www.AustinHardware.com)



[AustinHardwareAndSupply](#)



[AustinHardware](#)



[Austin Hardware & Supply, Inc.](#)



[Austin Hardware & Supply, Inc.](#)



[AustinHardware.WordPress.com](#)

Contact your nearest Austin Hardware location today to learn more.

California: 800.821.3520 | Georgia: 800.821.1664  
Indiana: 800.220.8118 | Missouri: 800.821.3520  
Pennsylvania: 800.634.4293 | Texas: 800.527.5640  
Wisconsin: 800.220.8118

